

# Adaptateurs de douille ProPEX en laiton sans plomb (LF) à PVC-C



## Renseignements sur le projet

Nom du poste :	Lieu :
Ingénieur :	Date de soumission:
Entrepreneur :	Présentée par:
Représentant du fabricant :	Approuvé par :

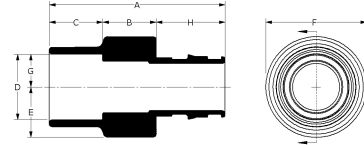
## Données techniques

Material	LF Brass
Temp/pressure ratings	73 °F (23 °C) at 160 psi (11 bar) 180 °F (82 °C) at 100 psi (6.9 bar) 200 °F (93 °C) at 80 psi (5.5 bar)
Prop 65 label required?	Yes

## Informations sur le produit et utilisation de l'application

ProPEX® Lead-free (LF) Brass CPVC Socket Adapters transition Uponor PEX tubing to CPVC copper tube size (CTS) pipe for use in hot and cold domestic potable water systems and hydronic radiant heating and cooling systems.

Note: Temperature and pressure ratings stated are hydrostatic ratings. For domestic hot-water (DHW) and DHW recirculation installations, operating conditions should not exceed 140°F (60°C) at 80 psi (5.5 bar) in accordance with ASTM F2023. For additional information regarding application-specific temperature and pressure ratings, refer to the Uponor PEX Piping Systems Design and Installation Manual.



Nom de la pièce	Numéro de pièce	A [inch]	B [inch]	C [inch]	D [inch]	E [inch]	F [inch]	G [inch]	H [inch]	Weight per UOM [lbs/UOM]	End Type 1
ProPEX LF Brass x CPVC Socket Adapter, 1 1/4" PEX x 1 1/4" CPVC (CTS)	CP4511313	3.685	1.12	1.12	1.385	1.055	2.11	0.693	1.445	0.62	ProPEX 1-1/4"
ProPEX LF Brass x CPVC Socket Adapter, 1 1/2" PEX x 1 1/2" CPVC (CTS)	CP4511515	4.184	1.16	1.32	1.64	1.2	2.4	0.82	1.704	0.77	ProPEX 1-1/2"
ProPEX LF Brass x CPVC Socket Adapter, 2" PEX x 2" CPVC (CTS)	CP4512020	5.227	1.36	1.72	2.141	1.5	3.0	1.07	2.147	1.42	ProPEX 2"

Nom de la pièce	Numéro de pièce	End Type 2
ProPEX LF Brass x CPVC Socket Adapter, 1 1/4" PEX x 1 1/4" CPVC (CTS)	CP4511313	CPVC 1-1/4"
ProPEX LF Brass x CPVC Socket Adapter, 1 1/2" PEX x 1 1/2" CPVC (CTS)	CP4511515	CPVC 1-1/2"
ProPEX LF Brass x CPVC Socket Adapter, 2" PEX x 2" CPVC (CTS)	CP4512020	CPVC 2"

## L'installation

Use the appropriate Uponor ProPEX Ring for the tubing (sold separately). Refer to the Uponor AquaPEX® Professional Plumbing Installation Guide or Uponor Radiant Floor Heating Installation Handbook for additional information. Follow all CPVC instructions and guidelines for proper CPVC connections.

## Applications connexes

- PEX-a Plumbing Systems
- Radiant Heating and Cooling Systems
- Permafrost Protection Systems
- Turf Conditioning Systems

## Les codes

UPC|IBC|IRC|IPC|NPC of Canada|UMC|NSPC|IMC

## Normes

NSF-372|ASTM F877|ASTM F1960|CSA B137.5|ASTM D2846|NSF-61|NSF-14

## Annonces

IAPMO-ES|HUD MR 1269|ICC-ES-PMG|cNSFus-pw-G|U.P.Code|cQAlus P321

## Notes de bas de page

## Coordonnées de la personne-ressource

Uponor Inc.  
5925 148th Street West  
Apple Valley, MN 55124  
T 800.321.4739  
F 952.891.2008

Uponor Ltd.  
6510 Kennedy Road  
Mississauga, ON L5T 2X4  
T 888.594.7726  
F 800.638.9517