

# Ensembles de raccords de compression pour collecteur de type QS

## Renseignements sur le projet

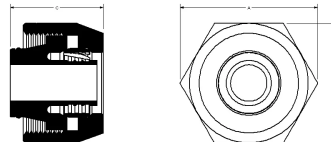
Nom du poste :	Lieu :
Ingénieur :	Date de soumission:
Entrepreneur :	Présentée par:
Représentant du fabricant :	Approuvé par :

## Données techniques

Material	Brass
Temp/pressure ratings	73 °F (23 °C) at 160 psi (11 bar) 180 °F (82 °C) at 100 psi (6.9 bar) 200 °F (93 °C) at 80 psi (5.5 bar)
Prop 65 label required?	Yes

## Informations sur le produit et utilisation de l'application

The Uponor R20 Compression Fitting Assembly threads onto manifold loop outlets. This R20 QS (Quick Seal) compression fitting connects Wirsbo hePEX™ or Uponor AquaPEX® tubing to the manifold in radiant heating applications and is designed for 5/16", 3/8", 1/2" or 5/8" tubing. The R25 QS compression fitting does not directly thread onto the manifold, but onto other R25 connections, and is designed for use with 5/8" and 3/4" tubing only.



Nom de la pièce	Numéro de pièce	A [inch]	B [inch]	C [inch]	Subcomponent Material	End Type 1	End Type 2	D [inch]	Cv	Equivalent length through [ft]	Weight per UOM [lbs/UOM]
5/16" QS-style Compression Fitting Assembly, R20 thread	A4020313	1.372	1.187	1.057	Fitting: CA 360 Brass	QS 5/16"	ISO 228-G 3/4"	-	-	-	0.26
3/8" QS-style Compression Fitting Assembly, R20 thread	A4020375	1.372	1.187	1.004	Fitting: CA 360 Brass	QS 3/8"	ISO 228-G 3/4"	-	-	-	0.23
1/2" QS-style Compression Fitting Assembly, R20 thread	A4020500	1.372	1.187	1.004	Fitting: CA 360 Brass	QS 1/2"	ISO 228-G 3/4"	-	-	-	0.21
5/8" QS-style Compression Fitting Assembly, R20 thread	A4020625	1.372	1.187	1.004	Fitting: CA 360 Brass	QS 5/8"	ISO 228-G 3/4"	-	-	-	0.19
5/8" QS-style Compression Fitting Assembly, R25 thread	A4030625	1.729	1.5	1.064	Fitting: CA 360 Brass	QS 5/8"	ISO 228-G 1"	-	-	-	0.4
3/4" QS-style Compression Fitting Assembly, R25 thread	A4020750	1.66	1.5	1.099	Fitting: CA 360 Brass	QS 3/4"	ISO 228-G 1"	-	-	-	0.33
5/8" QS-style Compression Fitting Assembly for Commercial Manifold, R25 thread	A4050625	1.729	1.5	1.217	-	Compression 5/8"	ISO 228-G 1"	-	6.58	4.56	0.4
3/4" QS-style Compression Fitting Assembly for Commercial Manifold, R25 thread	A4050750	1.66	1.5	1.221	-	Compression 3/4"	ISO 228-G 1"	-	8.08	7.12	0.4

Nom de la pièce	Numéro de pièce	Les codes	Normes	Annonces
Ensembles de raccords de compression pour collecteur de type QS	All	IMC IRC NBC of Canada UMC	CSA B137.5 ASTM F877	cNSFus-rfh ICC-ES-PMG 1012
In addition, the following parts have additional codes, standards, or listings:				
5/16" QS-style Compression Fitting Assembly, R20 thread	A4020313		R32: ISO 228-G 3/4"	
3/8" QS-style Compression Fitting Assembly, R20 thread	A4020375		R32: ISO 228-G 3/4"	
1/2" QS-style Compression Fitting Assembly, R20 thread	A4020500		R32: ISO 228-G 3/4"	
5/8" QS-style Compression Fitting Assembly, R20 thread	A4020625		R32: ISO 228-G 3/4"	
5/8" QS-style Compression Fitting Assembly, R25 thread	A4030625		R32: ISO 228-G 1"	
3/4" QS-style Compression Fitting Assembly, R25 thread	A4020750		R32: ISO 228-G 1"	
5/8" QS-style Compression Fitting Assembly for Commercial Manifold, R25 thread	A4050625		R25: ISO 228-G 1" NSF/ANSI 14	IAPMO-ES ICC PMG 1006
3/4" QS-style Compression Fitting Assembly for Commercial Manifold, R25 thread	A4050750		R25: ISO 228-G 1" NSF/ANSI 14	IAPMO-ES ICC PMG 1006

#### L'installation

The R20-threaded Compression Fitting connects to Uponor manifold loop outlets. The compression end enables direct connection to Wirsbo hePEX tubing. Use the R25-threaded Compression Fitting for other R25 connections. For more information, refer to the Radiant Floor Heating Installation Handbook.

#### Applications connexes

Radiant Heating and Cooling Systems  
Permafrost Protection Systems  
Turf Conditioning Systems

#### Notes de bas de page

#### Coordonnées de la personne-ressource

Uponor Inc.  
5925 148th Street West  
Apple Valley, MN 55124  
T 800.321.4739  
F 952.891.2008

Uponor Ltd.  
6510 Kennedy Road  
Mississauga, ON L5T 2X4  
T 888.594.7726  
F 800.638.9517