

# Raccords de compteur d'eau ProPEX en plastique technique (EP)



Submittal information

Date de soumission:

## Project Information

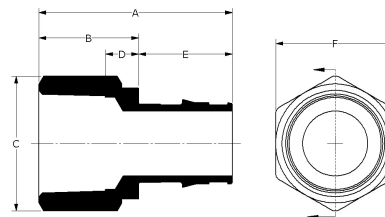
|                                 |                     |
|---------------------------------|---------------------|
| Job name :                      | Location :          |
| Engineer :                      | Date de soumission: |
| Contractor :                    | Présentée par:      |
| Manufacturer's representative : | Approved by :       |

## Technical Data

|                        |                                                                                                          |
|------------------------|----------------------------------------------------------------------------------------------------------|
| Material               | Engineered Polymer                                                                                       |
| Temp./pressure ratings | 73°F (23°C) at 160 psi (11 bar)<br>180°F (82°C) at 100 psi (6.9 bar)<br>200°F (93°C) at 80 psi (5.5 bar) |

## Product information and application use

ProPEX® engineered polymer (EP) water meter service fittings make connections for Uponor crosslinked polyethylene (PEX) tubing for use in hot or cold domestic potable water systems. Inlet PEX end is manufactured with an Uponor ProPEX fitting for connections to Uponor AquaPEX® tubing. The other end is manufactured to meet the NPSM threads of the water meter.



| Part name                                                    | Part no.  | A [inch] | B [inch] | C [inch] | D [inch] | E [inch] | F [inch] | G [inch] | H [inch] | Weight per UOM [lbs/UOM] | End type 1  |
|--------------------------------------------------------------|-----------|----------|----------|----------|----------|----------|----------|----------|----------|--------------------------|-------------|
| ProPEX EP Straight Water Meter Fitting, 3/4" PEX x 1" NPSM   | WS4360750 | 2.989    | 2.034    | 1.9      | 1.657    | 0.955    | 1.75     | 0.95     | -        | 0.22                     | ProPEX 3/4" |
| ProPEX EP Elbow Water Meter Fitting, 3/4" PEX x 1" NPSM      | WS4360751 | 3.182    | 0.875    | 2.745    | 0.62     | 0.955    | 2.525    | 1.9      | 0.377    | 0.24                     | ProPEX 3/4" |
| ProPEX EP Straight Water Meter Fitting, 1" PEX x 1 1/4" NPSM | WS4361000 | 3.606    | 2.415    | 2.25     | 1.883    | 1.191    | 2.125    | 1.125    | -        | 0.3                      | ProPEX 1"   |
| ProPEX EP Elbow Water Meter Fitting, 1" PEX x 1 1/4" NPSM    | WS4361001 | 3.828    | 0.553    | 3.275    | 0.75     | 1.191    | 3.066    | 2.125    | 2.743    | 0.34                     | ProPEX 1"   |

| Part name                                                    | Part no.  | End type 2  |
|--------------------------------------------------------------|-----------|-------------|
| ProPEX EP Straight Water Meter Fitting, 3/4" PEX x 1" NPSM   | WS4360750 | NPSM 1"     |
| ProPEX EP Elbow Water Meter Fitting, 3/4" PEX x 1" NPSM      | WS4360751 | NPSM 1"     |
| ProPEX EP Straight Water Meter Fitting, 1" PEX x 1 1/4" NPSM | WS4361000 | NPSM 1-1/4" |
| ProPEX EP Elbow Water Meter Fitting, 1" PEX x 1 1/4" NPSM    | WS4361001 | NPSM 1-1/4" |

## Installation

ProPEX tool and ProPEX rings (sold separately) are required for connecting the PEX tubing. For more information, refer to the Uponor Piping Pocket Guide.

## Related applications

## Codes

UPC|IBC|IRC|IPC|NPC of Canada|UMC|NSPC|IMC

## Standards

ASTM E814|ULC S115|ASTM F877|ASTM F1960|CSA B137.5|ULC S102.2|ASTM E119|UL 263|NSF-61|ULC S101|ASTM E84|NSF-14

## Listings

IAPMO-ES|HUD MR 1269|ICC-ES-PMG|cNSFus-pw|U.P.Code|cQAlus P321

## Trademark Information

ProPEX® is a registered trademark of Uponor Inc. ProPEX™ is a trademark of Uponor Ltd.

## Contact information

Uponor Inc.  
5925 148th Street West  
Apple Valley, MN 55124  
T 800.321.4739  
F 952.891.2008

Uponor Ltd.  
6510 Kennedy Road  
Mississauga, ON L5T 2X4  
T 888.594.7726  
F 800.636.9517