

## Références

# Grand Poet Hotel by Samarah



## Implication d'Uponor



## Grand Poet Hotel by Samarah, Riga

Historical building in heart of Riga. Universal Uponor MLC materials were used in the hotel water supply and radiator heating system.

It is the first artist built hotel in Riga comprising a modern art and bohemian lifestyle. The hotel building has the ancient and colourful history, preservation of which has required a special care during the renovation process.

## Connaissance du projet

### Location

Riga, Latvia

### Achèvement des travaux

2018

### Type de construction

Hôtels / Résidence de tourisme

### Product systems

Systèmes rayonnants rafraîchissants

### Adresse

Raina bulvaris 5/6, Riga, Latvia,  
LV1050

### Site internet

<https://grandpoet.semarahhotels.com/?lang=en>

### Type de projet

Renovation

## Partenaires

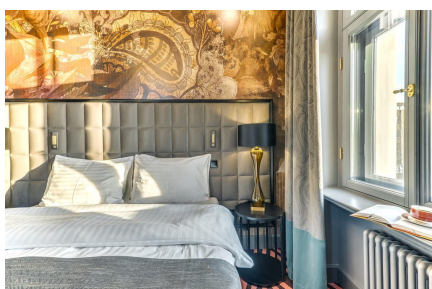
Architect: Sarma & Norde

Interior: Stylt Trampoli

## Short description

A new hotel with 168 stylish rooms and extra luxurious apartments. Here everything is in one place – a restaurant for a new and sophisticated gastronomic experience, modern event and conference rooms, spacious Wellness center, as well as three elegant SPA rooms that are going to be open in early spring. The hotel is a pearl for design idolaters, free-livers and cultural experiences. Universal Uponor MLC materials were used in the hotel water supply and radiator heating systems.

### Grand Poet Hotel by Samarah, Riga





Adresse

Uponor France  
523 Cours du 3<sup>e</sup> Millénaire  
69800 Saint-Priest,  
France

Téléphone +33 (0)4 74 95 70 70  
W [www.uponor.com](http://www.uponor.com)