

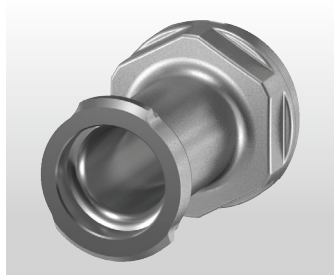
+GF+

uponor

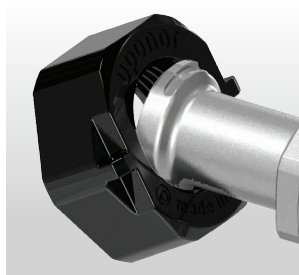
ProPEX[®] Water Service Fitting Assembly Instructions



uponor.com



Step 1: Locate large tab on bottom of fitting.



Step 2: Insert large tab into nut.



Step 3: Hand tighten assembly to meter. Add $\frac{1}{2}$ turn, if needed.

Note that overtightening may lead to potential leaks.

Note: Use engineered polymer (EP) nuts for plastic meters and metal nuts for metal meters.