

Radiant heating & cooling, plumbing and local heat distribution

Price Guide 2022

uponor



Build on Uponor solutions

Uponor provide innovative and reliable plumbing and heating solutions for all building types ranging from one bedroom apartments to large commercial properties. Our products are recognised the World over as being at the forefront of technology and manufacturing quality. The Uponor ethos of offering 'complete solutions' means that we are often involved with the transportation of water from the point of supply right the way through to the point of consumption. Whether it's transporting energy around a district heating system, or providing the cleanest, most hygienic drinking water, Uponor always has the customer's needs at the heart of everything we do.



Single family home



Hotels



Commercial



Multi storey residential



Industrial



Healthcare

Product Range

Uponor

Moving > Forward

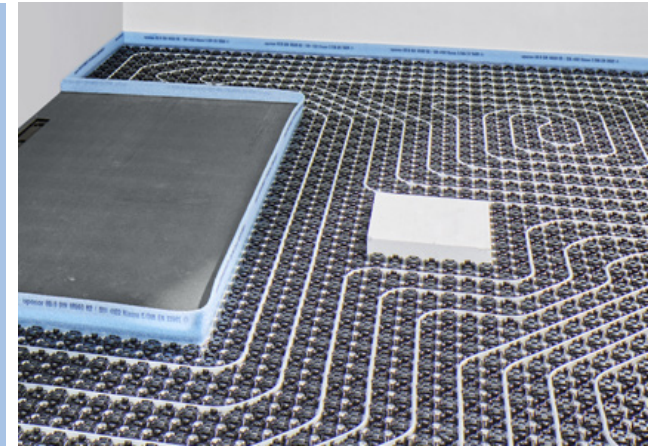
Flexible Plumbing Systems

Uponor's plumbing solutions are fast to install, flexible, hygienic and corrosion resistant. These solutions are designed for use in heating, cooling and drinking water applications.



Underfloor Heating & Cooling

Uponor offers a wide range of underfloor heating and cooling solutions for both commercial and domestic installations. Ideal for use with environmentally sound renewable technologies, our systems offer a high energy efficiency, whilst providing maximum comfort for the building occupants.



Ecoflex Pre-insulated Pipe

With over 25 million metres installed worldwide, Uponor Ecoflex pipes have proven to be a highly economical and an energy efficient choice for the transportation of heating and portable water.



NEW

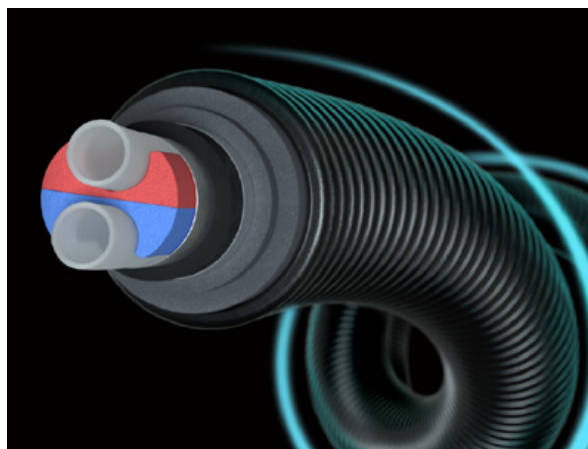
Ecoflex VIP Thermo

Uponor VIP Thermo provides best in class flexibility and improved thermal performance, minimising heat losses in a system.

Application: Heating

Sizes: 40mm to 125mm single
25mm to 75mm twin

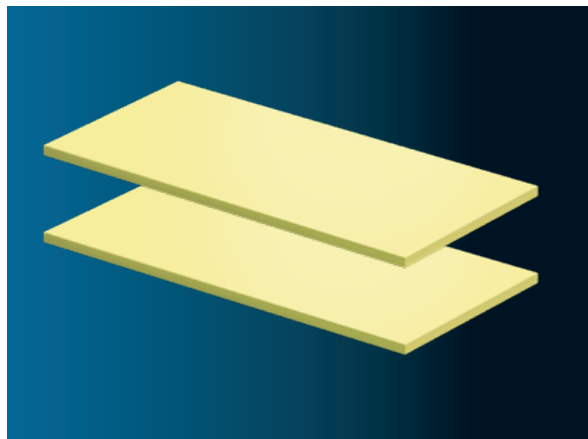
Page 93



XPS Insulation Panels

To make your UFH system even more efficient, Uponor launched a range of XPS Insulation panels to prepare the floor prior to the system installation.

Page 73



M12 Fuel Expander tool and rapid seal heads

M12 Fuel tool with brushless technology. 20% faster than the standard M12 tool.

Rapid seal expander heads to make connections that seal faster even in cold weather conditions.

Page 113



Contents

Uponor Overview	2
Sustainability	6
Plumbing, Heating & Building Services	10
Multilayer Plumbing System	12
RTM Fitting	14
Composite & Metal Press Fittings	19
RS Modular (Riser System)	37
Smart End Range	41
Q&E PEX Plumbing System	45
Manifolds, Adapters & Accessories	56
General Plumbing Accessories	59
Electric Underfloor Heating	61
Comfort E	63
Underfloor Heating & Cooling	67
UFH Pipe & Accessories	68
UFH Systems	70
UFH Manifolds & Water Temperature Controls	77
Heating & Cooling Room Controls	83
Ecoflex Pre-insulated Pipe	93
Pipe & Fitting Selector	94
Ecoflex Pipe	96
Ecoflex VIP Thermo	97
Ecoflex VIP Aqua	97
Wipex Fittings	100
Ecoflex Pipe Accessories	103
General Tools & Accessories	107
Approvals & accreditations	116
Uponor - Conditions of Sale	118

Prices in this guide are represented in GBP (£)

Plumbing, Heating
& Building Services

Underfloor
Heating & Cooling

Ecoflex
Pre-insulated Pipe

Ecoflex VIP
Thermo

Ecoflex VIP
Aqua

Committed to sustainability



uponor

Moving
> Forward

Uponor focuses on 4 out of the 17 United Nations' Sustainable Development Goals

The 2030 Agenda for Sustainable Development, adopted by all United Nations Member States in 2015, provides a shared blueprint for peace and prosperity for people and the planet, now and into the future. At its heart are the 17 *Sustainable Development Goals* (SDGs), which are an urgent call for action by all countries – developed and developing – in a global partnership.

These Development Goals are the blueprint for the essential task:
How can we achieve a better and more sustainable future for humanity?

6 CLEAN WATER AND SANITATION



8 DECENT WORK AND ECONOMIC GROWTH



12 RESPONSIBLE CONSUMPTION AND PRODUCTION



13 CLIMATE ACTION



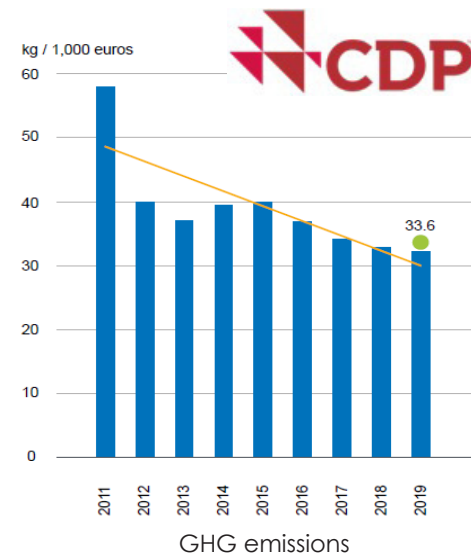
Uponor takes all 17 Goals seriously and acts responsibly towards them, especially the four Sustainable Development Goals which are connected with, and embedded in, our daily operations. We are confident that with our focus on innovation, our products, our production and our energy usage we can make a significant contribution to these Goals.

Uponor continues to drive its sustainability agenda

Since its foundation, Uponor acts responsibly and produces resource-efficient products and solutions. Therefore, we always have **three central themes** in mind:

<p>Scarcity of water</p> 	<p>Circular economy and material efficiency</p> 	<p>Climate change and strive for carbon neutrality</p> 
<p>Increasing requirements for building and construction as well as tighter regulations call for rethinking how we use our resources more effectively, efficiently and responsibly.</p>		

As active members of the Worlds Green Building Council and 7 other national Green Building Councils, and also participants in the Carbon Disclosure Project (CDP), we aim to continually reduce our impact on the environment whilst working to enhance the positive effect that our products can have on the industry's drive towards achieving the Net Zero



<p>Since 2020 all our European operations are using green electricity, thus avoiding 16,000 tons of CO₂ emission per year.</p>	<p>Solar panels in our Nastola operations are producing 270,000kWh electricity per year.</p>
	

We take responsibility

We have developed a new ecological friendly packaging design without changing the quality of our products.



Every little helps

- ✓ Natural brown cardboard instead of blue/white due to more environmentally friendly brown kraft liner paper
- ✓ Less CO₂ emissions during production of the boxes
- ✓ Less water consumption during production
- ✓ Easier to recycle after use

uponor | Moving > Forward

Plumbing, Heating & Building Services



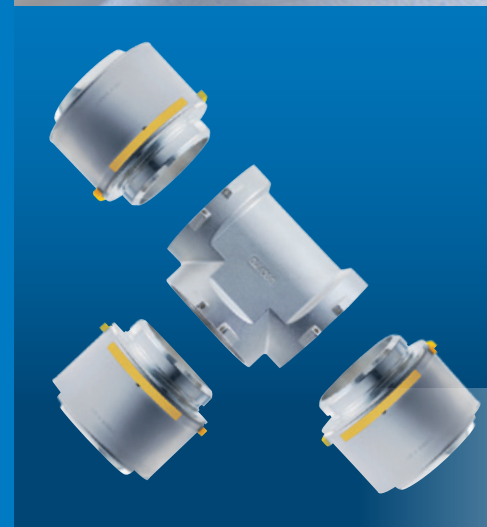
For more information on our FREE plumbing installation training, please email marketing.uk@uponor.com

uponor

Moving
> Forward

Plumbing solutions for the construction industry

Multilayer Plumbing System	12	Smart End Range	41
RTM Fitting	14	Q&E PEX Plumbing System	45
Composite & Metal Press Fittings	18	Manifolds Adapters & Accessories	56
Modular Riser Systems	37	General Plumbing Accessories	59



uponor

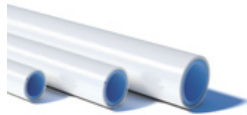
Moving
> Forward

Multilayer Plumbing Systems



100% oxygen diffusion resistant composite pipes for use with heating water, chilled water and domestic services. For smaller pipe sizes, Uponor uses a unique construction technology to manufacture the pipe. SAC technology (Seamless Aluminium Composite) allows the pipe to be bent in a much tighter radius, and coiled pipes are even more flexible than the standard MLC

Straight lengths



Description		Code	Qty	Price per M
3m lengths				
16x2mm	SAC	1060783	75m	3.27
20x2.25mm	SAC	1060784	51m	5.38
25x2.5mm	SAC	1060785	30m	8.25
32x3mm	SAC	1060786	21m	10.40
5m lengths				
16x2mm	SAC	1059572	125m	3.27
20x2.25mm	SAC	1059573	85m	5.38
25x2.5mm	SAC	1059574	50m	8.25
32x3mm	SAC	1059575	35m	10.33
40x4mm	MLC	1013446	20m	17.21
50x4.5mm	MLC	1013449	20m	25.68
63x6mm	MLC	1013451	15m	41.52
75x7.5mm	MLC	1013453	5m	64.99
90x8.5mm	MLC	1013455	5m	96.09
110x10mm	MLC	1013457	5m	135.59

Coils



Description		Code	Qty	Price per M
12x1.6mm	MLC	1013575	100m	2.46
14x2mm	MLC	1013366	200m	2.31
16x2mm	SAC	1096008	50m	2.47
16x2mm	SAC	1059576	100m	2.47
16x2mm	SAC	1092653	120m	2.49
16x2mm	SAC	1059577	200m	2.47
16x2mm	SAC	1059578	500m	2.47
20x2.25mm	SAC	1059579	100m	4.39
25x2.5mm	SAC	1059581	50m	7.29
32x3mm	SAC	1059583	50m	10.33

Multilayer Pipe in conduit



Coils of MLC in a protective, high density polyethylene tube.

Description		Code	Qty	Price per M
14mm	RED	1013678	75m	4.64
16mm	BLUE	1063059	75m	5.30
16mm	RED	1063061	75m	5.39
20mm	BLUE	1063060	75m	8.10
20mm	RED	1063062	75m	8.10

Multilayer Conduit (does not include MLC or SAC pipe)



Made of high density polyethylene for use with MLC or SAC coils.

Description	Use with pipe	Code	Qty	Price per M
20mm	RED 16mm	1012858	50m	1.47
20mm	BLUE 16mm	1012859	50m	1.47
20mm	BLACK 16mm	1012860	50m	1.47
23mm	RED 20mm	1012862	50m	1.86
23mm	BLUE 20mm	1012863	50m	1.86
23mm	BLACK 20mm	1012864	50m	1.86
29mm	RED 25mm	1012866	50m	2.71
29mm	BLUE 25mm	1012867	50m	2.71
29mm	BLACK 25mm	1012869	50m	2.71
36mm	BLACK 32mm	1012872	25m	3.18

Multilayer Pipe Pre-insulated S6 (6mm Insulation λ 0.04 W/m*K)



Fire classification E to BS EN 13501-1

Description		Code	Qty	Price per M
14x2mm	RED	1013577	50m	4.70

Multilayer Pipe Pre-insulated S6 (6mm Insulation λ 0.035 W/m*K)



Fire classification E to BS EN 13501-1

Description		Code	Qty	Price per M
16x2mm	BLUE	1063556	75m	5.15
20x2.25mm	BLUE	1063557	75m	6.87
25x2.5mm	BLUE	1063558	50m	8.94

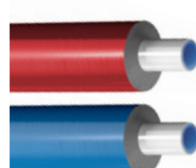
Multilayer Pipe Pre-insulated S10 (10mm Insulation λ 0.035 W/m*K)



Fire classification E to BS EN 13501-1

Description		Code	Qty	Price per M
16x2mm	BLUE	1062181	75m	5.43
20x2.25mm	BLUE	1062182	75m	7.56
25x2.5mm	BLUE	1062183	50m	9.71

Multilayer Pipe Pre-insulated (13mm Insulation λ 0.04 W/m*K)



Fire classification BL-S2-D0 to BS EN 13501-1 (equivalent to British National Class 0). Reaction to fire class accepted and referenced within The Building Regulations 2019, Fire Safety, Approved Document B.

Description		Code	Qty	Price per M
16x2mm	BLUE	1093952	75m	5.91
16x2mm	RED	1093953	75m	5.91
20x2.25mm	BLUE	1093954	75m	7.90
20x2.25mm	RED	1093955	75m	7.90
25x2.5mm	BLUE	1094883	50m	9.52

RTM™ Technology



RTM is ideal for new build projects, renovation projects and system repairs. It's quick, safe, easy and both the audible and visual joint indicators give the installer 100% security.

Designed for use on Uponor MLC & SAC pipes, RTM is easy to install due to its revolutionary Tool-Inside technology. The Ring Tension Memory ensures perfect, long-lasting joints.



Ring Tension Memory Technology
TOOL INSIDE

Colour coded diameters

16 20 25

RTM Coupling



Description	Code	Qty	Price each
16mm PPSU	1048542	10	5.47
20mm PPSU	1048543	10	6.92
25mm PPSU	1048544	5	10.60

RTM Reducer



Description	Code	Qty	Price each
20mmx16mm PPSU	1048545	10	6.45
25mmx20mm PPSU	1048546	5	9.54

RTM Elbow



Description	Code	Qty	Price each
16mm PPSU	1048547	10	5.59
20mm PPSU	1048548	10	7.51
25mm PPSU	1048549	5	12.61

RTM Stop end



Description	Code	Qty	Price each
16mm	1059013	1	8.96

RTM Elbow female thread



Description	Code	Qty	Price each
16mmx1/2" FT (PPSU)	1048561	10	9.75
16mmx1/2" FT (Brass)	1048590	10	11.50
20mmx1/2" FT (PPSU)	1048562	10	11.94
20mmx1/2" FT (Brass)	1048591	10	14.40
20mmx3/4" FT (Brass)	1048592	10	15.37
25mmx3/4" FT (PPSU)	1048563	5	16.69
25mmx3/4" FT (Brass)	1048593	5	21.06
25mmx1" FT (Brass)	1048594	5	22.30

RTM Elbow male thread



Description	Code	Qty	Price each
16mmx1/2" MT	1048599	10	12.01
20mmx1/2" MT	1048600	10	14.02
20mmx3/4" MT	1048601	10	17.38
25mmx3/4" MT	1048602	5	21.08

RTM Elbow - Wall plate - female thread



Description	Code	Qty	Price each
16mmx1/2" FT Brass	1048596	1	12.50
20mmx1/2" FT Brass	1048597	1	12.44

RTM Manifold adapter



For connecting MLC and SAC pipes to manifolds which use a Eurocone type connection

Description	Code	Qty	Price each
16mm G 3/4" Eurocone	1048604	1	11.33
20mm G 3/4" Eurocone	1048605	1	11.97

Uponor RTM Fittings

RTM Smart Aqua, U-tap elbow



For use with Smart End mounting brackets. See page 43.

Description	Code	Qty	Price each
16mmx1/2" FT	1061621	5	45.21

RTM Equal tee



Description	Code	Qty	Price each
16mm PPSU	1048550	5	7.02
20mm PPSU	1048551	5	11.03
25mm PPSU	1048552	1	18.09

RTM Reduced tee



Description	Code	Qty	Price each
1 2 3			
20mmx16mmx20mm PPSU	1048553	5	10.60
20mmx16mmx16mm PPSU	1048554	5	10.60
20mmx20mmx16mm PPSU	1048555	5	10.60
25mmx20mmx20mm PPSU	1048557	1	15.81
25mmx20mmx25mm PPSU	1048556	1	16.69

RTM Female tee (brass)



Description	Code	Qty	Price each
16x1/2" FTx16mm	1048587	1	18.43
20x1/2" FTx20mm	1048588	1	21.52
20x3/4" FTx20mm	1048589	1	24.13

RTM Female adapter



Description	Code	Qty	Price each
16x1/2" FT (PPSU)	1048558	5	9.67
16x1/2" FT (Brass)	1048581	5	11.92
20x1/2" FT (PPSU)	1048559	5	11.06
20x1/2" FT (Brass)	1048582	5	13.43
20x3/4" FT (Brass)	1048583	5	14.99
25x3/4" FT (PPSU)	1048560	1	13.90
25x3/4" FT (Brass)	1048584	1	18.52
25x1" FT (Brass)	1048585	1	21.08

RTM Male adapter



Description	Code	Qty	Price each
16x1/2" MT (PPSU)	1048539	5	6.81
16x1/2" MT (Brass)	1048566	5	10.43
20x1/2" MT (PPSU)	1048540	5	8.23
20x1/2" MT (Brass)	1048567	5	12.35
20x3/4" MT (Brass)	1048568	5	13.69
25x3/4" MT (PPSU)	1048541	1	11.94
25x3/4" MT (Brass)	1048569	1	17.64
25x1" MT (Brass)	1048570	1	20.48

RTM Copper adapter



Description	Code	Qty	Price each
16/15mm	1048603	5	8.28
25/22mm	1057377	1	13.13

RTM Radiator connection elbow

Radiator connection elbow with 15mm plated copper spigot.



Description	Code	Qty	Price each
16/200mm	1057379	1	24.70

RTM Swivel nut union



Description	Code	Qty	Price each
16x1/2" FT	1057375	5	14.61
20x3/4" FT	1057376	5	17.69

RTM Pipe calibration tool



Must be used on every RTM connection.

Description	Code	Qty	Price each
16/20/25mm	1048606	1	3.59

Uponor UK – Your partner for commercial projects



Old Oak Common Station, London

Products supplied – Thermally Active Building System (TABS), underfloor heating, EcoFlex Thermo PRO pre-insulated pipe, MLC pipe and PEX pipe.



Dudley College, Dudley

Products supplied – Thermally Active Building System (TABS), underfloor heating, EcoFlex Thermo PRO pre-insulated pipe, MLC pipe and PEX pipe.



Principal Hotel, London

Products supplied – MLC Modular Riser system, MLC press system, manifold plumbing with Q&E Shrink-fit.



George Street – World's tallest modular apartment building

Products supplied – MLC with manifold plumbing system.

To find out more about how we can assist you with a project, please email marketing.uk@uponor.com

uponor

Moving
Forward

Uponor S-Press PLUS Composite Fittings for MLC & SAC Pipes



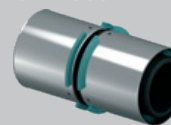
Composite coupling



Made of PPSU with colour coded stainless steel press sleeve.

Description	Code	Qty	Price each
16x16mm	1039933	20	3.96
20x20mm	1039934	10	5.30
25x25mm	1039935	10	8.33
32x32mm	1039936	10	13.61

S-Press



40x40mm	1046401	5	21.67
50x50mm	1046402	3	27.71
63x63mm	1032881	1	60.13
75x75mm	1032882	1	92.42

Composite reducer



Made of PPSU with colour coded stainless steel press sleeve.

Description	Code	Qty	Price each
20x16mm	1039937	20	4.83
25x16mm	1039938	10	7.60
25x20mm	1039939	10	7.98
32x25mm	1039940	10	13.03

S-Press



40x25mm	1039941	5	20.07
40x32mm	1039942	5	22.66
50x32mm	1039943	3	27.05
50x40mm	1046406	3	28.59
63x40mm	1032883	1	59.17
63x50mm	1032884	1	59.80
75x50mm	1032885	1	88.97
75x63mm	1032886	1	90.61

Contact us on 01923 927000 – enquiries.uk@uponor.com | 19

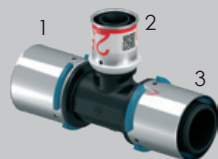
Composite reduced tee



Made of PPSU with colour coded stainless steel press sleeve.

Description	Code	Qty	Price each
1 2 3			
16x20x16mm	1039948	10	9.33
20x16x16mm	1039949	10	9.33
20x16x20mm	1039950	10	9.33
20x20x16mm	1039951	10	9.33
20x25x20mm	1039952	10	16.21
25x16x16mm	1039953	10	11.52
25x16x20mm	1039954	10	14.22
25x16x25mm	1039955	10	13.05
25x20x20mm	1039956	10	12.15
25x20x25mm	1039957	10	15.31
32x16x32mm	1039958	5	19.91
32x20x32mm	1039959	5	24.17
32x25x25mm	1039960	5	24.28
32x25x32mm	1039961	5	24.64

S-Press



40x20x40mm	1039962	5	29.51
40x25x32mm	1039963	5	31.95
40x25x40mm	1039964	5	31.95
40x32x32mm	1039965	5	31.09
40x32x40mm	1039966	5	33.69
50x25x40mm	1039967	3	40.51
50x25x50mm	1039968	3	42.32
50x32x50mm	1039969	3	47.51
50x40x50mm	1046400	3	51.11
63x25x63mm	1032889	1	83.33
63x32x63mm	1032890	1	88.30
63x40x63mm	1032891	1	94.14
75x32x75mm	1032892	1	114.05
75x40x75mm	1032893	1	114.89
75x50x75mm	1032894	1	127.27

Composite elbow 90°



Made of PPSU with colour coded stainless steel press sleeve.

Description	Code	Qty	Price each
16x16mm	1039929	20	4.96
20x20mm	1039930	10	6.19
25x25mm	1039931	10	8.99
32x32mm	1039932	5	13.94

S-Press

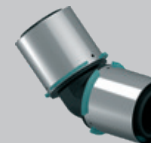


40x40mm	1046386	5	25.13
50x50mm	1046387	3	37.25
63x63mm	1032877	1	79.54
75x75mm	1032878	1	107.53

Composite elbow 45°

Made of PPSU with colour coded stainless steel press sleeve.

S-Press



40x40mm	1046388	5	41.55
50x50mm	1046389	3	55.40
63x63mm	1032879	1	81.16
75x75mm	1032880	1	113.53

Composite equal tee



Made of PPSU with colour coded stainless steel press sleeve.

Description	Code	Qty	Price each
16x16x16mm	1039944	10	6.70
20x20x20mm	1039945	10	10.04
25x25x25mm	1039946	5	17.17
32x32x32mm	1039947	5	27.28

S-Press



40x40x40mm	1046390	5	38.11
50x50x50mm	1046391	3	57.15
63x63x63mm	1032887	1	105.48
75x75x75mm	1032888	1	144.10

Introducing Uponor Uni-Pipe PLUS

The world's first Seamless
Aluminium Composite Pipe –
SACP

At Uponor we strive to provide innovation which raises the standard for the quality and performance of plumbing installations. Uni-Pipe PLUS uses ground breaking technology to enhance the benefits of using multilayer pipe systems. More flexible, easier to use and even more reliable, the new pipes offer the designer and installer market leading performance whilst retaining all the benefits of a traditional MLCP.

*Compatible with all Uponor press systems,
RTM and compression adapters.*



30
YEARS
MLCP

Reliable and safe for more than 30 years!

uponor

Moving
➤ Forward

Uponor S-Press PLUS Metal Fittings for MLC & SAC Pipes



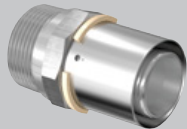
Adapter – male thread



Made of plated DZR brass with size colour coded stainless steel press sleeve. BSP 'R' type thread adapter for connections to BS EN 10226-1. *Not S-Press PLUS

Description	Code	Qty	Price each
14-R½" MT*	1014513	20	6.37
16-R¾" MT	1070501	20	4.91
16-R½" MT	1070502	20	5.73
16-R¾" MT	1070503	15	6.98
20-R½" MT	1070504	20	7.64
20-R¾" MT	1070505	10	8.62
20-R1" MT	1070506	10	12.61
25-R¾" MT	1070507	10	11.12
25-R1" MT	1070508	5	14.48
32-R1" MT	1070509	5	16.45
32-R1¼" MT	1070510	5	25.88

S-Press



40-R1¼" MT	1046901	5	26.94
40-R1½" MT	1046902	5	35.13
50-R1½" MT	1046905	3	38.29
50-R2" MT	1046906	3	57.65
63-R2" MT	1032895	1	77.44
75-R2½" MT	1032896	1	90.94

Adapter – female thread



Made of plated DZR brass with size colour coded stainless steel press sleeve. BSP 'Rp' type female threaded adapter for screw connection to BS EN 10226-1. *Not S-Press PLUS

Description	Code	Qty	Price each
14-Rp½" FT*	1014515	20	7.06
16-Rp½" FT	1070515	20	7.49
20-Rp½" FT	1070516	15	8.00
20-Rp¾" FT	1070517	10	10.40
20-Rp1" FT	1070518	20	16.83
25-Rp¾" FT	1070519	5	11.35
25-Rp1" FT	1070520	5	20.07
32-Rp1" FT	1070521	5	20.96
32-Rp1¼" FT	1070522	5	31.12

S-Press



40-Rp1¼" FT	1046903	5	30.24
40-Rp1½" FT	1046904	5	32.73
50-Rp1½" FT	1046907	3	36.45

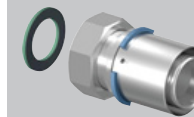
Adapter – swivel nut



Made from plated DZR brass with size colour coded stainless steel press sleeve and flat sealing washer. Swivel nut screw connection.

Description	Code	Qty	Price each
16-G¾" SN	1070708	1	12.64
16-G½" SN	1070602	1	14.06
16-G¾" SN	1070603	1	15.44
20-G½" SN	1070604	1	16.34
20-G¾" SN	1070605	1	17.36
25-G¾" SN	1070606	1	18.19
25-G1" SN	1070607	1	18.85
25-G1¼" SN	1070608	1	19.17
32-G1" SN	1070609	1	23.10
32-G1¼" SN	1070610	1	31.30

S-Press



40-G1¼" SN	1060094	5	35.97
40-G1½" SN	1046937	5	39.01
50-G1½" SN	1060095	3	44.42
50-G1¾" SN	1046938	3	41.77
50-G2" SN	1046939	3	49.04

Adapter – male thread



Made from plated DZR brass with size colour coded stainless steel press sleeve. BSP 'R' type male threaded adapter for screw connections to BS EN 10226-1.

Description	Code	Qty	Price each
16-R¾" MT	1070531	20	5.61
16-R½" MT	1070532	20	7.94
20-R½" MT	1070533	10	12.02
20-R¾" MT	1070534	10	12.71
25-R¾" MT	1070535	5	16.64
25-R1" MT	1070536	5	17.92
32-R1" MT	1070537	5	24.35

S-Press



40-R1¼" MT	1046909	5	37.18
------------	---------	---	-------

Uponor S-Press PLUS Metal Fittings for MLC & SAC Pipes



Adapter – elbow female thread



Made from plated DZR brass with size colour coded stainless steel press sleeve. BSP 'Rp' type female threaded adapter for screw connections to BS EN 10226-1.

Description	Code	Qty	Price each
16-Rp½" FT	1070539	10	8.48
20-Rp½" FT	1070540	10	11.17
20-Rp¾" FT	1070541	10	13.61
25-Rp¾" FT	1070542	5	16.89
25-Rp1" FT	1070543	5	18.67
32-Rp1" FT	1070544	5	25.38

S-Press



40-Rp1½" FT	1046910	5	39.73
50-Rp1½" FT	1046912	3	46.06

Adapter – elbow swivel nut



Made from plated DZR brass with size colour coded stainless steel press sleeve. BSP swivel nut connection with flat sealing washer.

Description	Code	Qty	Price each
16-G¾" SN	1070611	1	9.58
16-G½" SN	1070612	1	13.00
16-G¾" SN	1105818	1	15.41
20-G½" SN	1070613	1	16.42
20-G¾" SN	1105819	1	17.42
25-G¾" SN	1070614	1	18.90

Adapter – male thread



Made from plated DZR brass with size colour coded stainless steel press sleeve. Compression type connection to 10mm copper pipe.

Description	Code	Qty	Price each
16-R¾" MT/10 Cu	1070538	1	6.79

Elbow 90°



Made of plated DZR brass with size colour coded stainless steel press sleeve.

Description	Code	Qty	Price each
16x16mm	1070523	20	7.14
20x20mm	1070524	10	9.66
25x25mm	1070525	5	15.78
32x32mm	1070526	5	23.02

S-Press



40x40mm	1046908	5	33.96
50x50mm	1046911	3	46.73

Elbow 45°



Made of plated DZR brass with size colour coded stainless steel press sleeve.

Description	Code	Qty	Price each
25x25mm	1070545	5	29.39
32x32mm	1070546	5	35.03

S-Press



40x40mm	1046913	5	70.81
50x50mm	1046914	3	78.39

Bend 90°



Made of plated DZR brass with size colour coded stainless steel press sleeve.

Description	Code	Qty	Price each
16x16mm	1070527	10	8.19
20x20mm	1070528	10	10.18
25x25mm	1070529	5	15.64
32x32mm	1070530	5	23.01

Uponor S-Press PLUS Metal Fittings for MLC & SAC Pipes



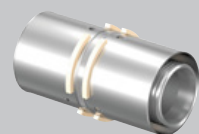
Coupling



Made of plated DZR brass with size colour coded stainless steel press sleeve.
* Not S-Press PLUS

Description	Code	Qty	Price each
14x14mm*	1015154	10	6.26
16x16mm	1070547	20	6.73
20x20mm	1070548	10	9.01
25x25mm	1070549	10	13.79
32x32mm	1070550	5	20.75

S-Press



40x40mm	1046932	5	28.30
50x50mm	1046935	3	36.26

Sliding Coupling



Made of plated DZR brass with size colour coded stainless steel press sleeve.
*Not S-Press PLUS

Description	Code	Qty	Price each
16x16mm	1118706	10	26.89
20x20mm	1118707	10	27.36
25x25mm	1118708	5	35.99
32x32mm	1118709	5	42.19
40x40mm*	1118710	3	53.48

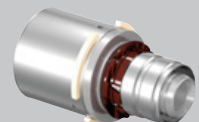
Reducer



Made of plated DZR brass with size colour coded stainless steel press sleeve.
* Not S-Press PLUS (Heating only)

Description	Code	Qty	Price each
16x14mm*	1015162	20	7.00
20x16mm	1070552	20	8.34
25x16mm	1070553	10	11.02
25x20mm	1070554	10	11.85
32x20mm	1070555	10	18.70
32x25mm	1070556	10	20.75

S-Press



40x25mm	1046930	5	25.96
40x32mm	1046931	5	30.30
50x32mm	1046933	3	36.14
50x40mm	1046934	3	36.21

Tee with male thread



Made of plated DZR brass with size colour coded press stainless steel sleeve.
Central BSP 'R' type male threaded adapter for screw connections to BS EN 10226-1.

Description	Code	Qty	Price each
1 2 3			
16-R $\frac{1}{2}$ " MT-16	1070592	10	15.65
25-R $\frac{3}{4}$ " MT-25	1070593	5	29.61
32-R $\frac{3}{4}$ " MT-32	1070594	5	38.07

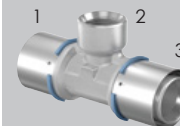
Tee with female thread



Made of plated DZR brass with size colour coded press stainless steel sleeve. Central BSP 'Rp' type female threaded adapter for screw connections to BS EN 10226-1.

Description	Code	Qty	Price each
1 2 3			
16-Rp $\frac{1}{2}$ " FT-16	1070595	10	19.98
20-Rp $\frac{1}{2}$ " FT-20	1070596	15	22.71
20-Rp $\frac{3}{4}$ " FT-20	1070597	10	24.05
25-Rp $\frac{1}{2}$ " FT-25	1070598	5	26.50
25-Rp $\frac{3}{4}$ " FT-25	1070599	5	28.30
32-Rp $\frac{1}{2}$ " FT-32	1070600	5	31.54
32-Rp $\frac{3}{4}$ " FT-32	1070601	5	35.61

S-Press



40-Rp $\frac{1}{2}$ " FT-40	1046922	5	36.21
40-Rp $\frac{3}{4}$ " FT-40	1046923	5	37.67
50-Rp1" FT-50	1046929	3	45.27

Equal tee



Made of plated DZR brass with size colour coded stainless steel press sleeve.
*Not S-Press PLUS

Description	Code	Qty	Price each
14x14x14mm*	1014886	10	8.78
16x16x16mm	1070560	10	9.47
20x20x20mm	1070561	10	14.47
25x25x25mm	1070562	5	22.63
32x32x32mm	1070563	5	41.76

S-Press



40x40x40mm	1046921	5	46.76
50x50x50mm	1046928	3	68.51

Uponor S-Press PLUS Metal Fittings for MLC & SAC Pipes



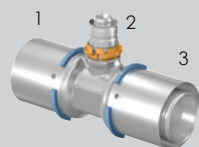
Tee reducer



Made of plated DZR brass with size colour coded stainless steel press sleeve.
* Not S-Press PLUS (Heating only)

Description	Code	Qty	Price each
1 2 3			
14x16x14mm*	1014888	10	9.87
16x14x14mm*	1014912	10	9.65
16x14x16mm*	1014915	10	10.19
16x20x16mm	1070566	10	16.51
20x16x16mm	1070567	10	15.53
20x16x20mm	1070568	20	15.80
20x20x16mm	1070569	20	15.80
20x25x16mm	1070570	10	19.47
20x25x20mm	1070571	10	19.81
25x16x16mm	1070572	5	16.95
25x16x20mm	1070573	5	17.22
25x16x25mm	1070574	5	19.41
25x20x16mm	1070575	5	17.77
25x20x20mm	1070576	5	18.56
25x20x25mm	1070577	5	20.35
25x25x16mm	1070578	5	17.31
25x32x25mm	1070579	5	29.10
32x16x32mm	1070580	5	25.88
32x20x32mm	1070581	5	27.58
32x25x25mm	1070582	5	28.61
32x25x32mm	1070583	5	30.64

S-Press



40x20x40mm	1046916	5	35.90
40x25x32mm	1046917	5	40.89
40x25x40mm	1046918	5	40.14
40x32x32mm	1046919	5	39.38
40x32x40mm	1046920	5	43.38
50x25x40mm	1046924	3	46.42
50x25x50mm	1046925	3	46.86
50x32x50mm	1046926	3	56.98
50x40x50mm	1046927	3	47.87

Composite pipe to Copper adapter



Fitting body made from plated DZR brass with size colour coded stainless steel press sleeve. Adapter pipe made from plated BS EN 1057 copper tube for connections to metal press connections and copper compression fittings conforming to BS EN 1254. *Not S-Press PLUS

Description	Code	Qty	Price each
14-15 Cu*	1014511	10	7.11
16-10 Cu	1070705	20	6.52
16-12 Cu	1070706	20	5.99
16-15 Cu	1070615	20	4.85
20-15 Cu	1070707	10	7.00
20-22 Cu	1070617	15	7.47
25-22 Cu	1070618	5	8.90
25-28 Cu	1070619	5	16.30
32-28 Cu	1070620	5	15.91

Stop end



Made from plated DZR brass with size colour coded stainless steel press sleeve.

Description	Code	Qty	Price each
16mm	1070621	40	4.59
20mm	1070622	20	5.08
25mm	1070623	10	5.99
32mm	1070624	5	11.82

Smart Aqua U-tap elbow



Made from plated DZR brass with size colour coded stainless steel press sleeve. BSP 'Rp' type female thread connection. For use in 'serial' or 'loop' type installations. Mounting brackets and fixings on page 43.

Description	Code	Qty	Price each
16-Rp½" FT-16 l=43mm	1070629	5	24.39
20-Rp½" FT-20 l=43mm	1070630	5	28.78
20-Rp½" FT-16 l=43mm	1070631	5	28.78
16-Rp½" FT-20 l=43mm	1070632	5	28.78
25-Rp½" FT-25 l=51mm	1070633	3	41.86
25-Rp½" FT-20 l=51mm	1070634	3	53.66
20-Rp½" FT-25 l=51mm	1070635	3	53.66

Smart Aqua U-tap elbow mixer



Made from plated DZR brass with size colour coded stainless steel press sleeve. BSP 'R' type male thread connection. For use in 'serial' or 'loop' type installations.

Description	Code	Qty	Price each
16-16-R½" MT	1070636	5	37.69
20-20-R¾" MT	1070637	5	44.53

Uponor S-Press PLUS Metal Fittings for MLC & SAC Pipes



Smart Aqua tap elbow



Made of plated DZR brass with size colour coded stainless steel press sleeve. BSP 'Rp' type female threaded connection – standard. *Not S-Press PLUS

Description	Code	Qty	Price each
14-Rp½" FT l=40mm*	1015437	10	7.33
16-Rp¾" FT l=40mm	1070638	10	7.97
16-Rp½" FT l=40mm	1070639	10	7.90
20-Rp½" FT l=40mm	1070640	10	9.45
20-Rp¾" FT l=43mm	1070641	5	9.52
25-Rp¾" FT l=51mm	1070642	5	16.05

Smart Aqua tap elbow long



Made of plated DZR brass with size colour coded stainless steel press sleeve. BSP 'Rp' type female threaded connection – long.

Description	Code	Qty	Price each
16-Rp½" FT l=50mm	1070644	10	8.14
20-Rp½" FT l=50mm	1070645	10	9.83

Smart Aqua tap elbow XL



Made of plated DZR brass with size colour coded stainless steel press sleeve. BSP 'Rp' type female threaded connection – XL.

Description	Code	Qty	Price each
16-Rp½" FT l=62mm	1070646	10	8.61
20-Rp½" FT l=62mm	1070647	10	9.91

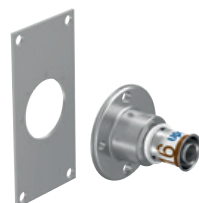
Smart Aqua tap elbow twin 90° long



Made of plated DZR brass with size colour coded stainless steel press sleeve. BSP 'Rp' type female threaded connection – long.

Description	Code	Qty	Price each
16-Rp½" FT-16 l=50mm	1070648	10	17.88
20-Rp½" FT-20 l=50mm	1070649	10	18.31

Smart Aqua adapter wall penetration



Twist proof connection for wall penetrations. Requires a 33mm hole. Made from plated DZR brass with size colour coded stainless steel press sleeve.

Description	Code	Qty	Price each
16-G½" FT	1070652	1	16.60

Smart Aqua tap elbow LWC



Twist proof connection for wall penetrations. Requires a 33mm hole. Made from plated DZR brass with size colour coded stainless steel press sleeve. BSP 'R' type male thread for screw connections to BS EN 10226-1. Fitting kit included.

Description	Code	Qty	Price each
16-Rp½" FT l=25	1070653	1	45.02
16-Rp½" FT l=35	1070654	1	45.69

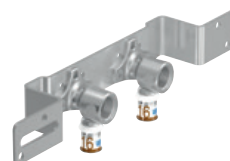
Smart Aqua U-tap elbow LWC



Twist proof connection for wall penetrations. Requires a 33mm hole. Made from plated DZR brass with size colour coded stainless steel press sleeve. BSP 'R' type male thread for screw connections to BS EN 10226-1. For use in 'serial' or 'loop' installations. Fitting kit included.

Description	Code	Qty	Price each
16-Rp½" FT l=25	1070655	1	57.85
16-Rp½" FT l=35	1070656	1	64.97

Smart Aqua tap elbow mount unit



Mounted Aqua tap elbow assembly. Fittings made from plated DZR brass with size colour coded stainless steel press sleeve. BSP 'Rp' type female threaded screw connections to BS EN 10226-1.

Description	Code	Qty	Price each
16-Rp½" FT c/c 80mm	1070661	5	19.97
16-Rp½" FT c/c 150mm	1070662	5	20.49

Smart Aqua tap elbow mount unit



Mounted Aqua tap elbow assembly. Fittings made from plated DZR brass with size colour coded stainless steel press sleeve. BSP 'Rp' type female threaded screw connections to BS EN 10226-1.

Description	Code	Qty	Price each
16-Rp½" FT c/c 35mm	1070683	5	18.06
16-Rp½" FT c/c 50mm	1070684	5	18.29

Smart Base baseboard adapter



A slim-line baseboard connection for radiators with valve connections at the bottom of the radiator. Made of plated DZR brass with size colour coded stainless steel press sleeve.

Description	Code	Qty	Price each
16-G½" MT-16	1070693	1	59.76
16-G½" MT-20	1070694	1	60.80
16-G½" MT-0	1070695	1	55.59
0-G½" MT-16	1094219	1	55.59
20-G½" MT-16	1070696	1	60.80
16-G½" MT-20	1070697	1	62.05

Uponor S-Press PLUS Metal Fittings for MLC & SAC Pipes



Smart Aqua elbow adapter



Body of the fitting made from plated DZR brass with size colour coded stainless steel press sleeve. BS EN 1057 plated copper pipe 15x1mm and 12x1mm. *Not S-Press PLUS

Description	Code	Qty	Price each
14-12 Cu l=150mm*	1014654	20	9.97
16-15 Cu l=150mm	1070650	20	8.65
16-12 Cu l=150mm	1070651	20	8.20

Smart Radi elbow adapter unplated



Body of the fitting made from DZR brass with size colour coded stainless steel press sleeve. BS EN 1057 copper pipe 15x1mm.

Description	Code	Qty	Price each
16-15 Cu l=250mm	1070677	20	14.43

Smart Radi elbow adapter plated



Body of the fitting made from plated DZR brass with size colour coded stainless steel press sleeve. BS EN 1057 copper pipe 15x1mm and 22x1mm. *Not S-Press PLUS

Description	Code	Qty	Price each
14-15 Cu l=350mm*	1015615	20	14.07
16-15 Cu l=350mm	1070678	20	16.25
16-15 Cu l=1000mm	1070679	20	28.38
25-22 Cu l=250mm	1070680	20	18.29

Smart Radi tee adapter plated



Body of the fitting made from plated DZR brass with size colour coded stainless steel press sleeve. BS EN 1057 plated copper pipe 15x1mm.

Description	Code	Qty	Price each
16-15 Cu-16 l=350mm	1070681	20	25.39
20-15 Cu-20 l=350mm	1070682	20	28.16

Uni-X Compression adapter (MLC)



For adaption of MLC to compression fitting bodies to BS EN 1254. Note: Threads on the fitting body MUST be checked to prove adequate length to make the connection. **A bevelling tool must be used (see page 109)**

Description	Code	Qty	Price each
12x15mm Chrome	1013813	20	5.42
14x15mm Chrome	1048100	10	4.93
16x15mm Brass	1013805	20	3.44
16x15mm Chrome	1013806	20	3.65
20x22mm Brass	1013807	10	6.28
25x28mm Brass	1013808	10	11.88

Smart Radi crossing



A crossover free connection for radiators used within a floor or a wall. Made of plated DZR brass with size colour coded stainless steel press sleeve.

Description	Code	Qty	Price each
16-16-16	1070685	1	53.69
20-16-16	1070686	1	53.51
20-16-20	1070687	1	54.51
20-20-20	1070688	1	56.46

Smart Radi crossing insulated



A crossover free connection for radiators used within a floor or a wall. Made of plated DZR brass with size colour coded stainless steel press sleeve.

Description	Code	Qty	Price each
16-16-16	1070689	1	56.12
20-16-16	1070690	1	56.96
20-16-20	1070691	1	57.90
20-20-20	1070692	1	59.84

Press lever ball valve



Description	Code	Qty	Price each
16mm	1046603	6	34.08
20mm	1046604	6	46.95
25mm	1046605	6	52.08
32mm	1046606	6	70.41

S-Press



Description	Code	Qty	Price each
40mm	1046607	4	132.00
50mm	1046608	4	152.84

S-Press Coupler



For connection of Uponor MLC to copper and stainless steel heating pipes. Metal press connections use either M or V profile press tools.

Description	Code	Qty	Price each
M Profile 16-15CU-SST	1090682	10	9.25
M Profile 20-22CU-SST	1090683	5	11.86
M Profile 25-22CU-SST	1090684	5	13.17
M Profile 32-28CU-SST	1090685	5	14.68
V Profile 16-15CU-SST	1090678	10	9.58
V Profile 20-22CU-SST	1090679	5	11.86
V Profile 25-22CU-SST	1090680	5	13.17
V Profile 32-28CU-SST	1090681	5	14.68

MLC – RS Modular system

MLC pipes are fast becoming one of the most popular pipe materials used for the supply of water for heating and domestic services. It is faster to install, cleaner, quieter, cost effective and more secure.

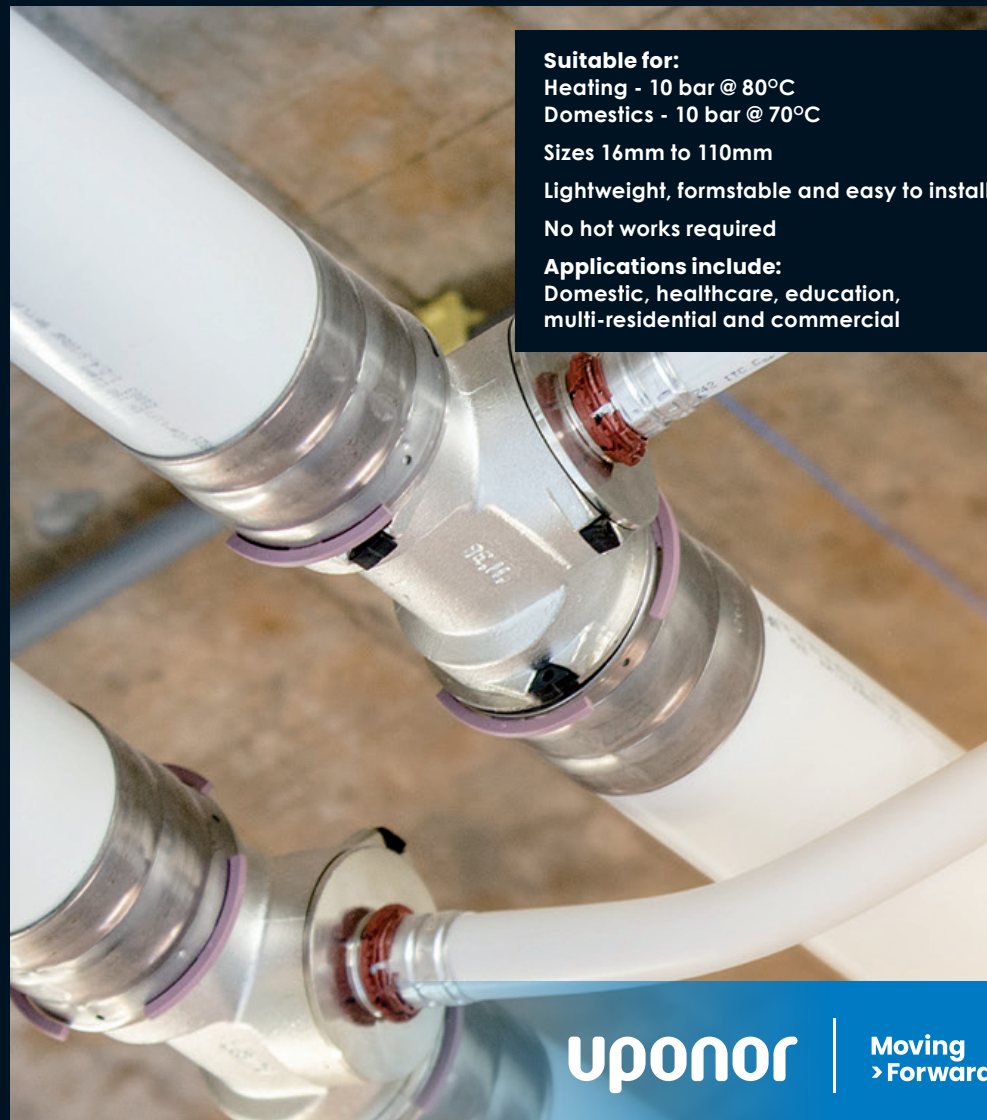
Suitable for:
Heating - 10 bar @ 80°C
Domestics - 10 bar @ 70°C

Sizes 16mm to 110mm

Lightweight, formstable and easy to install

No hot works required

Applications include:
Domestic, healthcare, education,
multi-residential and commercial

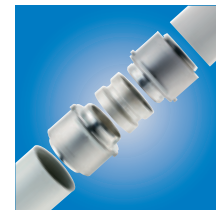


uponor

Moving
➤ Forward

RS Modular (Riser System)

Uponor's MLC RS fittings range is fast becoming the system of choice on many world-class projects. With just a small range of easy to install fittings, hundreds of connection possibilities can be created. The distinctive "click and lock" mechanism removes the need for overhead pressing allowing safe, quicker installation.



3 SIMPLE STEPS

1 SELECT THE BODY SIZE

'RS2'


(up to 75mm)


OR


'RS3'


(for 90mm - 110mm)


2 SELECT THE BODY CONNECTION TYPE


Tee



45° Elbow



90° Elbow



Coupler



Reducer

3 CHOOSE ADAPTERS TO SUIT CONNECTION


Adapter


Female Thread


Male Thread


Flange

Benefits:

- Components with hundreds of fitting variations possible
- Greater flexibility and lower logistics costs thanks to minimal number of system components
- Optimum availability with less storage space and lower investment costs
- Quick to install and can be pressed at the workbench

RS Modular

RS-Press adapter MLC & SAC



Made of tin plated brass with stainless steel press sleeve. For connection of MLC to RS2/RS3 Bodies. **Note: All RS-Press Adapters must only be pressed using the approved Uponor UP75 or UP110 (1083612) tools. *S-Press PLUS connection.**

Description	Code	Qty	Price each
RS 2-16	1059397	1	26.07
RS 2-20*	1095818	1	25.87
RS 2-25*	1095819	1	27.60
RS 2-32*	1095820	1	27.60
RS 2-40	1046940	1	30.23
RS 2-50	1046941	1	30.23
RS 2-63	1029125	1	29.77
RS 2-75	1029126	1	37.70
RS 3-90	1029127	1	105.48
RS 3-110	1029128	1	113.02

RS Modular



RS elbow 90°



Made of tin plated brass. Includes 2 lock pins.

Description	Code	Qty	Price each
RS 2	1029138	1	29.77
RS 3	1029139	1	90.42

RS elbow 45°



Made of tin plated brass. Includes 2 lock pins.

Description	Code	Qty	Price each
RS 2	1029140	1	42.20
RS 3	1029141	1	97.96

RS coupling



Made of tin plated brass. Includes 2 lock pins.

Description	Code	Qty	Price each
RS 2	1029144	1	27.14
RS 3	1029145	1	67.83

RS tee



Made of tin plated brass. Includes 3 lock pins.

Description	Code	Qty	Price each
RS 2	1029142	1	37.70
RS 3	1029143	1	97.96

RS reducer



Made of tin plated brass. Includes 1 lock pin.

Description	Code	Qty	Price each
RS3-RS2	1029146	1	49.75

Spare lock pins



Description	Code	Qty	Price each
RS2 modular lock pin (black)	1042921	10	2.75
RS3 modular lock pin (grey)	1042922	10	6.41

RS Modular



RS adapter - male thread



Made of tin plated brass. For connection to RS2/RS3 Bodies.
'R' type male thread to BS EN 10226-1.

Description	Code	Qty	Price each
RS 2 MT 1 1/2"	1059402	1	31.26
RS 2 MT 2"	1029131	1	33.17
RS 2 MT 2 1/2"	1029132	1	45.23
RS 3 MT 3"	1029133	1	52.74

RS adapter - female thread



Made of tin plated brass. For connection to RS2/RS3 Bodies.
Rp type female thread to BS EN 10226-1.

Description	Code	Qty	Price each
RS 2 FT 1/2"	1059403	1	26.81
RS 3 FT 1/2"	1059404	1	36.85
RS 2 FT 1"	1029134	1	22.61
RS 2 FT 2"	1029135	1	33.17
RS 2 FT 2 1/2"	1029136	1	45.23
RS 3 FT 3"	1029137	1	52.74

RS flange adapter



Made of tin plated brass. For connection to RS2/RS3 Bodies.

Description	Bolt Circle	Bolt Holes	Code	Qty	Price each
RS 2 DN 65 (PN 6)	130	4	1059398	1	186.48
RS 2 DN 65 (PN 16)	145	4	1059399	1	222.50
RS 3 DN 80 (PN 6)	150	4	1059400	1	233.63
RS 3 DN 80 (PN 16)	160	8	1029129	1	201.94
RS 3 DN 100 (PN 6)	170	4	1059401	1	266.39
RS 3 DN 100 (PN 16)	180	8	1029130	1	221.53

RS spacer



Made of tin plated brass. For connection to RS2/RS3 Bodies.
*Finished measurement of the spacer once fitted.

Description	Code	Qty	Price each
RS 2 170mm (130mm*)	1046477	1	81.89
RS 3 250mm (210mm*)	1046478	1	141.73
RS 2 5mm	1046750	1	39.57
RS 3 5mm	1046751	1	63.30

Just 40 components will make over 300 different configurations

40 components are sufficient for an entire system.



uponor

Moving
> Forward

Smart End Range

For Uponor tap water system



Plumbing, Heating
& Building Services



1 – Fix bracket and mount fitting



2 – Connect pipe and pressure test



3 – Finish the wall over the assembly



4 – Connect tap to the BSP thread.

Q&E PEX Shrink-fit Smart Aqua



Page 54

S-Press PLUS Smart Aqua for MLC & SAC



Page 31

RTM Smart Aqua for MLC & SAC



Page 16

Uponor S-Press PLUS Smart Aqua & Accessories for MLC & SAC

The Smart Aqua range are ideal for use in situations where hygiene is a prime consideration. Using the Smart Aqua range, plumbing schemes can be installed using the 'serial' or 'loop' type configuration to help prevent water stagnation.

Smart Aqua U-tap elbow



Page 31

Smart Aqua U-tap elbow mixer



Page 31

Smart Aqua tap elbow



Page 32

Smart Aqua tap twin 90° long



Page 32

Smart Aqua tap elbow LWC



Page 33

Smart Aqua U-tap elbow LWC



Page 33

Mounting plate



For use with Smart Aqua tap elbows. Designed for on-wall mounting. Allows tap connections with 75mm or 150mm spacings. Supplied with 2 insert pins and screws.

Description	Code	Qty	Price each
75/150mm	1057840	5	3.05

Mounting angle



For use with Smart Aqua tap elbows. Designed for in-wall mounting and flush finish. Allows tap connections with 75mm or 150mm spacing. Supplied with 2 insert pins and screws.

Description	Code	Qty	Price each
75/150mm	1057842	5	5.59

Mounting track



For use with Smart Aqua tap elbows, on-wall or in-wall construction, with mounting steps every 75mm.

Description	Code	Qty	Price each
2000mm	1057844	10	19.48

Smart Aqua Elbow Range

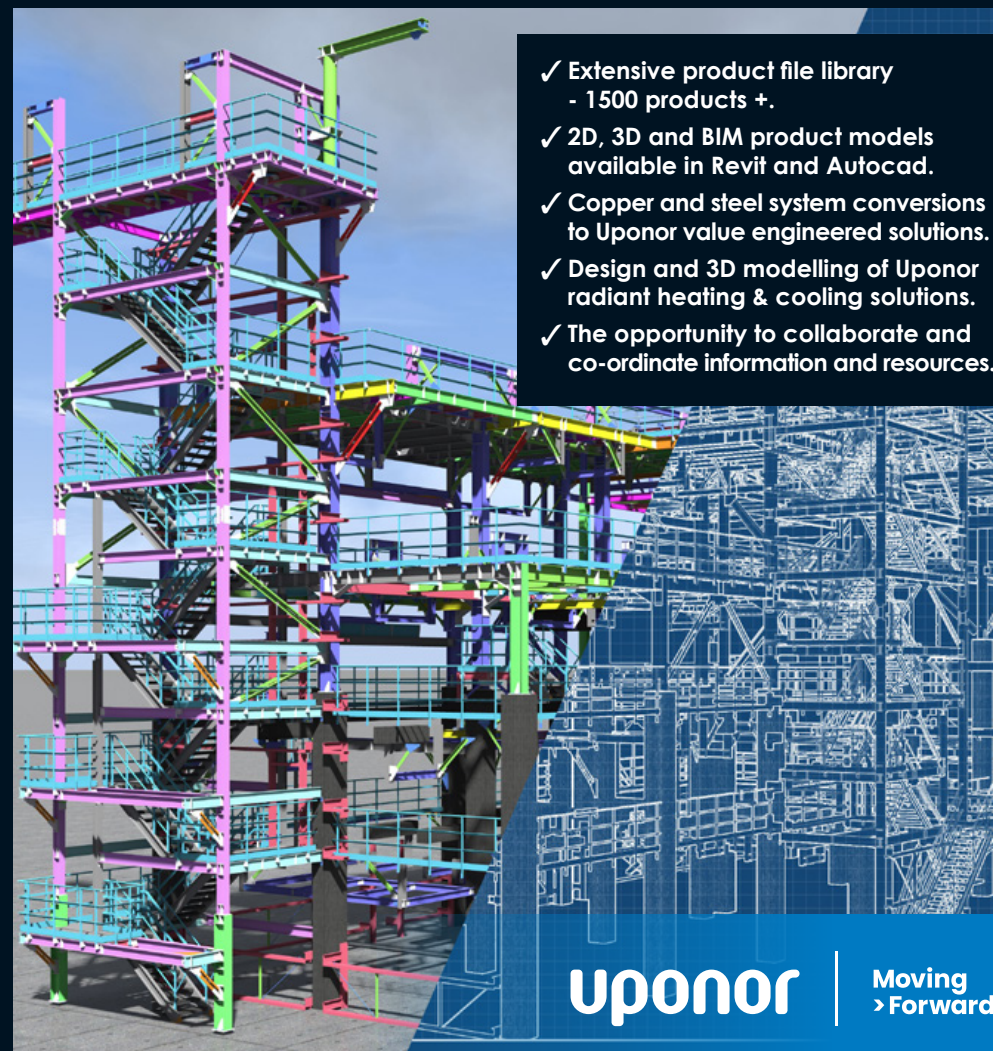
Uponor Tap Water System
Uponor MLC & SAC Pipe

www.uponor.co.uk

Uponor BIM – the means to flawless installations

Digital transformation is key to a more sustainable construction. Achieve your project's digital goals via the Uponor BIM platform.

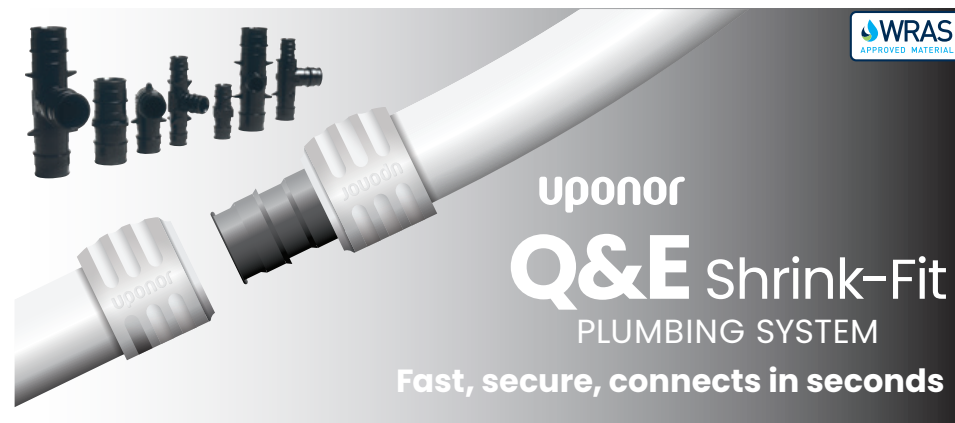
www.uponor.co.uk/specification/bim-platform



- ✓ Extensive product file library - 1500 products +.
- ✓ 2D, 3D and BIM product models available in Revit and Autocad.
- ✓ Copper and steel system conversions to Uponor value engineered solutions.
- ✓ Design and 3D modelling of Uponor radiant heating & cooling solutions.
- ✓ The opportunity to collaborate and co-ordinate information and resources.

uponor

Moving
➤ Forward



uponor
Q&E Shrink-Fit
PLUMBING SYSTEM

Fast, secure, connects in seconds

Q&E PEX Plumbing System

Uponor Q&E Shrink-fit PEX plumbing system, with EVOH oxygen diffusion barrier, suitable for use with heating water, chilled water and domestic services. Manufactured to BS EN 15875.

Q&E PEX Pipe white, supplied in 3m or 5m straight lengths



Description	Code	Qty	Price per M
16x1.8mm (3m)	1058803	75m	2.87
20x1.9mm (3m)	1058804	48m	5.44
25x2.3mm (3m)	1058805	30m	7.17
32x2.9mm (5m)	1083815	35m	10.97
40x3.7mm (5m)	1083816	15m	19.94
50x4.6mm (5m)	1083817	10m	28.47
63x5.8mm (5m)	1083818	5m	44.58

Q&E PEX Pipe white, supplied in coils



Description	Code	Qty	Price per M
12x1.1mm	1085245	100m	1.88
16x1.8mm	1059173	50m	2.69
16x1.8mm	1059182	100m	2.69
16x1.8mm	1059183	200m	2.69
20x1.9mm	1059174	50m	5.04
25x2.3mm	1059175	50m	6.79
32x2.9mm	1084387	50m	7.36

Q&E PEX Plumbing System



Q&E PEX pipe-in-conduit



Pipe-in-pipe system is designed to be integrated into the building structure and to be covered by screeds. Pipe can be withdrawn without damage to the building structure. Complies with the requirements of the Water Regulations 1999.

Description	Code	Qty	Price per M
16mm - Red	1059179	50m	4.44
20mm - Red	1059180	50m	5.49
20mm - Blue	1059177	50m	5.49
25mm - Red	1059181	50m	6.92

Q&E Conduit (does not include PEX pipe)



Made of high-density polyethylene. Supplied in coils. First number shown in description refers to I.D. of the protective tube. The second is the size of PEX suitable.

Description	Use with pipe	Code	Qty	Price per M
20 Red	16mm	1012858	50m	1.47
20 Blue	16mm	1012859	50m	1.47
20 Black	16mm	1012860	50m	1.47
23 Red	20mm	1012862	50m	1.86
23 Blue	20mm	1012863	50m	1.86
23 Black	20mm	1012864	50m	1.86
29 Red	25mm	1012866	50m	2.71
29 Blue	25mm	1012867	50m	2.71
29 Black	25mm	1012869	50m	2.71
36 Black	32mm	1012872	25m	3.18

Q&E Rings



Must be used on all Q&E Shrink-fit system connections.

Description	Code	Qty	Price each
12mm Red	1058454	20	0.23
12mm Blue	1058453	20	0.24
16mm Red	1058010	20	0.43
16mm Blue	1058013	20	0.43
16mm White	1057453	20	0.43
20mm Red	1058011	20	0.51
20mm Blue	1058014	20	0.51
20mm White	1057454	20	0.51
25mm Red	1058012	20	0.59
25mm Blue	1058015	20	0.59
25mm White	1057455	20	0.59
32mm White	1057456	10	1.24
40mm Natural	1045464	5	1.61
50mm Natural	1045489	5	3.87
63mm Natural	1045490	5	6.90

Q&E Coupling



Made from Engineered Plastic (PPSU). Uponor Q&E Shrink-fit connections on both ends. *Brass body fitting.

Description	Code	Qty	Price each
12mm*	1058467	10	3.54
16mm	1008669	5	1.75
20mm	1008932	5	2.45
25mm	1008671	5	3.73
32mm	1001235	1	6.82
40mm	1008673	1	13.12
50mm	1042866	1	23.13
63mm	1042865	1	37.54

Q&E Elbow 90°



Made from Engineered Plastic (PPSU). Uponor Q&E Shrink-fit connections on both ends. *Brass body fitting.

Description	Code	Qty	Price each
12mm*	1058470	10	4.58
16mm	1008679	5	1.73
20mm	1008680	5	2.74
25mm	1008681	5	5.32
32mm	1001245	1	8.74
40mm	1008683	1	17.13
50mm	1042859	1	32.20
63mm	1042858	1	58.78

Q&E Equal tee



Made from Engineered Plastic (PPSU). Uponor Q&E Shrink-fit connections on both ends. *Brass body fitting.

Description	Code	Qty	Price each
12mm*	1058475	10	7.70
16mm	1008684	5	2.54
20mm	1008685	5	3.66
25mm	1008686	5	6.11
32mm	1001250	1	13.60
40mm	1008688	1	22.04
50mm	1042861	1	52.60
63mm	1042860	1	88.18

Q&E PEX Plumbing System



Q&E Tee reducer



*Brass body fitting

Made from Engineered Plastic (PPSU). Uponor Q&E Shrink-fit connections on each end. *Brass body fitting.

Description	Code	Qty	Price each
1 2 3			
16x12x12mm*	1058477	10	4.63
16x12x16mm*	1058478	10	4.77
16x20x16mm	1008710	5	4.11
20x16x16mm	1008700	5	4.11
20x16x20mm	1008689	5	4.11
20x20x16mm	1008697	5	4.11
20x25x20mm	1008711	5	6.17
25x12x25mm*	1085246	5	6.48
25x16x16mm	1008702	5	6.17
25x16x20mm	1008699	5	6.17
25x16x25mm	1008690	5	6.17
25x20x16mm	1008701	5	6.17
25x20x20mm	1008703	5	6.17
25x20x25mm	1008691	5	5.68
25x25x20mm	1001420	5	7.08
25x32x25mm	1008712	1	10.65
32x25x20mm	1008704	1	10.54
32x20x25mm	1001422	1	9.90
32x20x32mm	1001424	1	10.61
32x25x25mm	1001426	1	10.79
32x25x32mm	1001428	1	11.68
40x25x40mm	1008695	1	18.21
40x32x40mm	1008696	1	19.95
40x20x32mm	1008707	1	17.20
40x25x32mm	1008708	1	17.50
40x32x32mm	1008709	1	18.08
40x20x40mm	1008694	1	17.32
50x40x40mm	1042862	1	48.47
50x32x50mm	1042863	1	45.06
50x25x50mm	1042864	1	44.16
50x40x50mm	1042875	1	46.86
50x25x40mm	1042876	1	40.91
63x50x50mm	1042868	1	75.72
63x40x40mm	1042869	1	68.97
63x32x63mm	1042870	1	72.16
63x25x50mm	1042871	1	68.53
63x40x63mm	1042872	1	74.98
63x25x63mm	1042873	1	74.40
63x50x63mm	1042874	1	81.65

Q&E Elbow 90° with female thread



Uponor Q&E Shrink-fit connection on one end, with BSP 'RP' type female-threaded adapter for screw connections to BS EN 10226-1.

Description	Code	Qty	Price each
16x1/2" FT PPSU	1042334	5	5.62
20x1/2" FT PPSU	1042335	5	9.34
20x3/4" FT PPSU	1042336	5	9.34
25x3/4" FT PPSU	1042337	5	9.34
16x1/2" FT Brass	1023023	5	5.90
20x1/2" FT Brass	1023024	5	8.43
20x3/4" FT Brass	1023025	5	9.46
25x3/4" FT Brass	1023026	5	10.50

Q&E Female centre tee



Made from engineered plastic (PPSU). Uponor Q&E Shrink-fit connections on both ends, with female BSP 'RP' type thread. For connections to BS EN 10226-1.

Description	Code	Qty	Price each
1 2 3			
16x1/2"x16mm	1042338	5	5.96
20x1/2"x20mm	1042339	5	7.48
25x1/2"x25mm	1042340	5	9.34
25x3/4"x25mm	1042341	5	9.82

Q&E Adapter male thread



Uponor Q&E Shrink-fit connection on one end, with BSP 'R' type male thread (brass) adapter. 'G' type male thread (PPSU) adapter for screw connections to BS EN 10226-1.

Description	Code	Qty	Price each
16x1/2" MT	1008661	5	4.52
20x1/2" MT	1008662	5	5.32
20x3/4" MT	1008663	5	5.32
25x3/4" MT	1008664	5	5.68
25x1" MT	1008665	5	8.66
25x3/4" MT (Brass)	1047862	5	6.84
25x1" MT (Brass)	1047863	5	12.70
32x1" MT (Brass)	1008730	1	15.90
40x1 1/4" MT (Brass)	1008732	1	26.64
50x1 1/2" MT (Brass)	1047864	1	46.13
63x2" MT (Brass)	1008867	1	96.96

Q&E PEX Plumbing System



Q&E adapter female thread



Uponor Q&E Shrink-fit connection on one end, with BSP 'Rp' type female-threaded adapter for screw connections to BS EN 10226-1.

Description	Code	Qty	Price each
16x1/2" FT PPSU	1042329	5	6.08
20x1/2" FT PPSU	1042330	5	7.66
20x3/4" FT PPSU	1042331	5	7.88
25x3/4" FT PPSU	1042332	5	9.34
25x3/4" FT Brass	1023012	5	10.09
25x1" FT Brass	1023013	5	16.92
32x1" FT Brass	1047866	1	19.40
40x1 1/4" FT Brass	1047867	1	47.92
50x1 1/2" FT Brass	1085078	1	108.36



Q&E Reducer



Uponor Q&E Shrink-fit connection on both ends. *Brass body fitting.

Description	Code	Qty	Price each
16x12mm*	1058468	10	2.46
20x16mm	1008674	5	2.38
25x16mm	1008675	5	3.79
25x20mm	1008676	5	4.73
32x25mm	1001240	1	5.89
40x32mm	1008678	1	9.65
50x32mm	1042879	1	26.22
50x40mm	1042867	1	25.51
63x40mm	1042878	1	39.44
63x50mm	1042877	1	38.30

Q&E Elbow with male thread



Uponor Q&E Shrink-fit connection on one end, with 'G' male-threaded adapter for screw connections.

Description	Code	Qty	Price each
16xG1/2" MT	1008666	5	4.23
20xG1/2" MT	1008667	5	4.91
25xG3/4" MT	1008668	5	6.50

Q&E Stop end



Description	Code	Qty	Price each
16mm	1084671	20	1.85

Q&E Adapter - swivel nut



Uponor Q&E Shrink-fit connection on one end, with 'G' type female-threaded adapter for screw connections. Washer included.

Description	Code	Qty	Price each
16x1/2" PPSU	1038021	1	7.48
16x1/2" Brass	1023014	5	4.32
20x1/2" Brass	1023015	5	5.84
20x3/4" Brass	1023016	5	5.65
25x3/4" Brass	1023017	5	9.31
25x1" Brass	1023018	5	10.66

Q&E Adapter elbow 90° - swivel nut



Uponor Q&E Shrink-fit connection on one end, with 'G' type female-threaded adapter for screw connections. Washer included.

Description	Code	Qty	Price each
16x1/2" FT	1038037	1	7.89

Q&E Manifold (PPSU)



Made from engineered plastic (PPSU), with 'G' type threaded inlet. Use with Q&E PEX rings.

Description	Code	Qty	Price each
3/4"x16x16x16mm	1008714	1	13.21
3/4"x20x16x16mm	1008716	1	13.21
3/4"x16x16x16x16mm	1008715	1	13.79
3/4"x20x16x16x16mm	1008717	1	13.66

Q&E Manifold (PPSU), Q&E inlet



Supplied as a single manifold. Made from engineered plastic (PPSU). Use with Q&E PEX rings.

Description	Code	Qty	Price each
25/16x16x16mm	1008718	1	13.21
25/16x16x16x16mm	1008719	1	13.79

Q&E PEX Plumbing System



Q&E Aqua PLUS modular manifold



Made from engineered plastic (PPSU), 'G' type threaded outlet to BS EN 10226-1.

Description	Code	Qty	Price each
1" 1xG½" MT c/c50mm	1047997	1	13.09
1" 1xG¾" MT c/c50mm	1047998	1	14.34

Q&E Aqua PLUS modular manifold



Made from engineered plastic (PPSU), c/w with Q&E outlets.

Description	Code	Qty	Price each
1" 2x16 c/c50mm	1047999	1	14.95
1" 3x16 c/c50mm	1048000	1	16.82
1" 4x16 c/c50mm	1048001	1	22.44

Q&E Aqua PLUS modular adapter male thread



Made from engineered plastic (PPSU). For straight adaption from Modular manifold, 'G' type thread.

Description	Code	Qty	Price each
1" G¾" MT	1048002	1	11.22

Q&E Aqua PLUS modular elbow adapter male thread



Made from engineered plastic (PPSU). For 90 degree adaption from Modular manifold, 'G' type thread.

Description	Code	Qty	Price each
1" G¾" MT	1048003	1	10.78

Q&E Aqua PLUS modular manifold end cap



Description	Code	Qty	Price each
1"	1048004	1	7.48
1" c/w air nipple	1048005	1	18.68

Q&E Aqua Plus Modular Manifold Bracket



Description	Code	Qty	Price each
1" Bracket	1092021	1	12.11

Q&E to soldered Copper adapter



To adapt to Q&E PEX pipe from soldered copper. Allow to cool before making Q&E joint.

Description	Code	Qty	Price each
12x15Cu	1085248	5	2.83
16x15Cu	1023040	5	2.83
20x15Cu	1023041	5	5.43
20x22Cu	1047941	5	6.36
25x22Cu	1023042	5	5.62
25x28Cu	1047942	5	7.48
32x28Cu	1047943	1	40.84

Q&E to Copper compression adapter



To adapt to Q&E PEX pipe from copper compression.
*Not suitable for push fit or press fit type joints.

Description	Code	Qty	Price each
16x15mm	1008734	5	3.32
20x22mm	1008736	5	5.69

Q&E to MLC adapter



The fitting features a Q&E nipple onto S-PRESS connections giving a simple adaption from PEX to MLC pipework. This makes interchanging from both systems easier, faster and neater.

Description	Code	Qty	Price each
16mm	1062845	1	10.24
20mm	1062846	1	9.90
25mm	1062861	1	13.64

Q&E Compression adapters (PEX pipe)



Brass compression fitting to be used in conjunction with standard 15mm compression fitting bodies. Compatibility of threads must be checked.

Description	Code	Qty	Price each
12x½" FT	1085247	5	4.57
16x½" FT	1058934	1	4.95
20x½" FT	1058935	1	10.26

Q&E adapter to RS2 fittings



To adapt to Q&E PEX pipe from MLC Riser system.

Description	Code	Qty	Price each
RS Adapter Q&E PL Q&E 25-RS2	1047021	1	28.69
RS Adapter Q&E PL Q&E 32-RS2	1047022	1	28.69
RS Adapter Q&E PL Q&E 40-RS2	1047023	1	32.78
RS Adapter Q&E PL Q&E 50-RS2	1047024	1	32.78
RS Adapter Q&E PL Q&E 63-RS2	1047026	1	32.78

Q&E PEX Plumbing System

Q&E Valve



Fully assembled and sealed lever valve.

Description	Code	Qty	Price each
25 x 25mm	1038428	1	22.07
32 x 32mm	1038429	1	41.81

Q&E Smart Aqua tap elbow



For use with Smart End mounting brackets. See page 43.

Description	Code	Qty	Price each
16½" FT	1059822	5	10.69
20½" FT	1059823	5	12.16

Q&E Smart Aqua U-tap elbow



For use with Smart End mounting brackets. See page 43.

Description	Code	Qty	Price each
16½" FTx16	1059820	1	37.82
20½" FTx20	1059821	1	48.92

Q&E Termination Box



To be used with 16x ½" FT 90° elbow (item 1042334) and radiator connection pipe.

Description	Code	Qty	Price each
16x ½" FT	1048622	10	4.69

Radiator connection pipe



15mm copper x ½" BSP MT to connect radiator to termination box.

Description	Code	Qty	Price each
½" MT x 350mm Chrome plated	1015425	20	12.62

Q&E termination box mounting tool



For sealing off Uponor ½" outlets during pressure testing.

Description	Code	Qty	Price each
½" MT	1008281	1	2.83

Q&E Radiator connection elbow



Uponor Q&E PEX plumbing system on one end. Chrome plated brass elbow with 15mm spigot for connection to radiators.

Description	Code	Qty	Price each
16x300mm	1023045	2	18.68

Radiator connection guide (solid floor)



Robust bend support and white powder coated aluminium upstand to protect pipe between floor and radiator. Price refers to a pack of two guides.

Description	Code	Qty	Price each
12/16mm	1002237	1	28.43

Snap ring



Clip-on snap ring made of Polypropylene, available in white only.

Description	Code	Qty	Price each
15/16mm	1011370	50	0.47

Single bend guide plastic



Used to curve and protect Uponor evalPEX 16mm pipe-in-pipe up out of the floor leaving only the Uponor evalPEX 16mm pipe exposed through the floor. Protects the pipe below floor level. Price refers to single bend guide.

Description	Code	Qty	Price each
Single bend guide, PEX 16mm pipe-in-pipe	1009008	10	8.96

Manifolds, Adapters & Accessories

Uni-X Manifold H – N/V



Stainless steel flow and return manifolds for heating. Comes complete with mounting brackets. Primary connections are 1" BSP threads, outlet connections are ¾" Eurocone (sold separately).

Description	Code	Qty	Price each
2 port	1088873	1	102.23
3 port	1088874	1	112.60
4 port	1088875	1	124.02
5 port	1088876	1	147.02
6 port	1088877	1	165.26
7 port	1088878	1	181.27
8 port	1088879	1	196.30
9 port	1088880	1	213.54
10 port	1088881	1	231.90
11 port	1088882	1	255.03
12 port	1088883	1	272.50

Vario S Manifold L/S



Stainless steel flow and return manifolds for heating. Comes complete with mounting brackets. Lockshield valves supplied. Actuators can be added if required page 90 or page 92. Primary connections are 1" BSP threads, outlet connections are ¾" Eurocone (sold separately).

Description	Code	Qty	Price each
2 port	1088045	1	124.73
3 port	1088046	1	154.18
4 port	1088047	1	177.79
5 port	1088048	1	208.25
6 port	1088049	1	235.55
7 port	1088050	1	268.67
8 port	1088051	1	294.69
9 port	1088052	1	335.59
10 port	1088053	1	368.26
11 port	1088054	1	403.97
12 port	1088055	1	433.37
13 port	1088868	1	456.87
14 port	1088869	1	491.44
15 port	1088870	1	525.99
16 port	1088871	1	562.10

Eurocone compression adapter for Q&E PEX



Made of plated brass ¾" Eurocone adapter for connections to Uni-X N/V and Vario S L/S manifolds.

Description	Code	Qty	Price each
16x¾" FT	1057441	10	7.85
20x¾" FT	1057442	10	8.10

Eurocone compression adapter for MLC & SAC



Made of plated brass ¾" Eurocone adapter for connections to Uni-X N/V and Vario S L/S manifolds.

Description	Code	Qty	Price each
14x¾" FT Eurocone	1058089	10	6.90
16x¾" FT Eurocone	1058090	1	5.08
20x¾" FT Eurocone	1058092	1	5.97
25x¾" FT Eurocone	1058093	1	12.09

UNI-C Manifold with valves, L



Supplied as a single manifold. Made of plated brass, ¾" or 1" MT x FT connections with ½" or ¾" MT outlets. Valves allow each circuit to be isolated. Delivered with loop labelling discs. Order adapters separately for connection to Uponor pipe (MLC/SAC/Q&E). Manifolds can be joined to make the required number of ports. 5 bar maximum operating pressure

Description	Code	Qty	Price each
2 port ¾" x ½" MT outlets	1002280	1	24.81
3 port ¾" x ½" MT outlets	1002281	1	35.32
4 port ¾" x ½" MT outlets	1002282	1	49.16
2 port 1" x ¾" MT outlets (¾ Eurocone)	1002284	1	26.36
3 port 1" x ¾" MT outlets (¾ Eurocone)	1002285	1	40.40
4 port 1" x ¾" MT outlets (¾ Eurocone)	1002286	1	50.95

UNI-C Manifold without valves, P



Supplied as a single manifold. Made of plated brass, with 1" MT x 1" FT with ½" MT outlets. Order adapters separately for connection to Uponor pipe (MLC/SAC/Q&E). Manifolds can be joined to make the required number of ports.

Description	Code	Qty	Price each
2 port 1" x ½" MT outlets	1014107	1	23.94
3 port 1" x ½" MT outlets	1014111	1	33.96
4 port 1" x ½" MT outlets	1014109	1	42.60

UNI-C Manifold adapter for MLC & SAC



Made of plated brass. For use with UNI-C manifold L/P.

Description	Code	Qty	Price each
12x½" FT	1013831	1	6.61
14x½" FT	1058085	1	5.11
16x½" FT	1058086	1	4.64
20x½" FT	1058088	1	8.51

UNI-C Manifold adapter for Q&E



Made of plated brass. For use with UNI-C manifold L/P.

Description	Code	Qty	Price each
16x½" FT	1059510	10	5.31

Manifolds, Adapters & Accessories



UNI-C Manifold cap (with sealing washer)



Made of plated brass, for use with Manifold P.

Description	Code	Qty	Price each
½" FT	1014120	20	4.19
1" FT	1014121	20	6.93

UNI-C Manifold end cap



Made of plated brass, for use with UNI-C manifold L/P.

Description	Code	Qty	Price each
¾" FT	1002275	1	3.65
1" FT	1002276	1	4.14

UNI-C Manifold end plug



Made of plated brass, with sealing o-ring.

Description	Code	Qty	Price each
¾" MT	1002273	1	5.31
1" MT	1002274	10	5.31

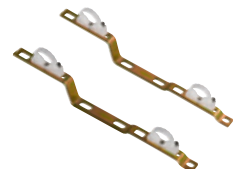
UNI-C Manifold ball valve



Made of plated brass. Used to isolate the whole manifold assembly.

Description	Code	Qty	Price each
¾" MT x ¾" FT Supplied as a single valve.	1002279	1	30.26
1" FT x 1" MT Supplied in pairs.	1059132	2	40.49

Uni-C Manifold Bracket, L or P



Made of galvanized steel, for the attachment of the manifolds L and P. Price refers to a pack of two guides.

Description	Code	Qty	Price each
¾"/1"	1045451	1	25.63

UNI-C Manifold bracket, P



Supplied as a single bracket. Made of galvanized steel, for the sound absorbing installation of Manifold P.

Description	Code	Qty	Price each
1"	1014117	1	14.83

General Plumbing Accessories



Uni-C compression fittings



Plated compressions fittings for use with 15mm compression adapters – page 34

Description	Code	Qty	Price each
Coupling	1013894	40	3.00
Elbow	1013914	20	4.69
Elbow adapter - Rp ½ FT	1013932	10	5.05
Tap elbow - Rp ½ FT	1015559	10	7.84

Chromed radiator compression elbow



Plated brass elbow with 15mm plated brass spigot for connecting MLC & SAC to radiators with suitable compression adapters (12mm : 1013813, 16mm : 1013806).

Description	Code	Qty	Price each
15x20mm MT	1002124	10	9.56

Danfoss connection set



Made of plated brass, male-threaded pressure screw. With insert part and clamp ring, with blue O-ring, suitable for use with female-threaded Danfoss radiator valves.

Description	Code	Qty	Price each
16x½" MT	1013970	20	5.31

General Plumbing Accessories

Pipe clips



Pipe clips made of white plastic.

Description	Code	Qty	Price each
15/16mm	1013142	100	0.87
20mm	1013144	50	1.10
22/25mm	1013145	50	1.40
28/32mm	1013146	50	2.73
40mm	1013147	25	3.42

PEX Pipe bend supports



To provide a right angle bend in PEX pipes and for use on pipe-in-conduit bends.

Description	Code	Qty	Price each
Metal			
15mm/16mm	1009004	10	2.52
20mm	1009233	10	3.75
25mm	1009006	10	5.46
28-34mm	1001231	2	6.37

Single plugged hook



For the fast attachment of pipes with an outer diameter of up to 32mm. Suitable for use on concrete floor.

Description	Code	Qty	Price each
60mm	1013137	50	0.51
80mm	1013138	50	0.51

Twin plugged hook



For the fast attachment of pipes with an outer diameter of up to 32mm. Suitable for use on concrete floor.

Description	Code	Qty	Price each
60mm	1013139	50	0.56
80mm	1013140	50	0.56

Snap ring



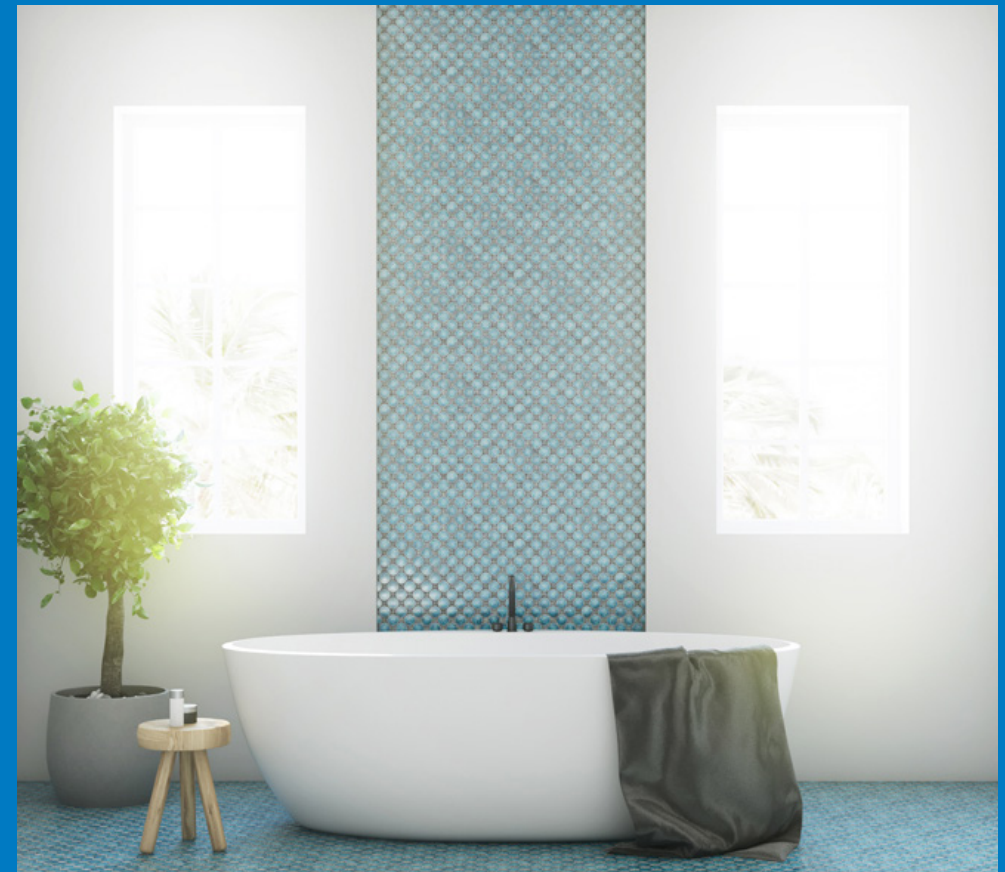
Clip-on snap ring made of Polypropylene, available in white only.

Description	Code	Qty	Price each
15/16mm	1011370	50	0.47
20mm	1011372	50	0.45

Electric Underfloor Systems

Uponor Comfort E solution is compatible with a range of different floor types, in line with our recommendation.

Step 1 – Choose your mat	63
Step 2 – Choose your thermostat	64
Step 3 – Accessories	64



uponor

Moving
Forward

Build on Uponor with Comfort E

Experience Uponor Comfort E, electric underfloor heating with the flattest stitched cable mat that is easy to set up and quick to respond. Our Comfort E solution is ideal for new builds and renovation projects.

www.uponor.co.uk



- ✓ **Wherever:** flexible installation options for any floor type in new-build and renovation projects.
- ✓ **Whenever:** easy to install and create your comfortable place in no time at all.
- ✓ **With quality:** rely on Uponor, the world's expert in underfloor heating, with quality made in Germany.

uponor

Moving
➤ Forward

Electric UFH Systems Comfort E

Step 1 - Choose your mat

Benefits:

- 10 year total floor guarantee.*
- Dedicated after sales support.
- Ideal for new build and renovation projects.

* Excluding controls

Comfort E cable mat



Embedded electrical radiant heating mat. Suitable for use under all floor types, tiles in particular.

- 160 W/m² output
- 3mm shielded double core cable with 4m cold connector
- Heating conductor with FEP electrical insulation
- Sew-up cable on a self-adhesive carrier mat
- Incl. protection tube for the floor sensor
- IPX7 - CE/VDE approved

Mat size m ²	Code	Qty	Pack Price
1m	1088656	1	85.21
1.5m	1088657	1	98.64
2m	1088658	1	120.01
2.5m	1088659	1	164.09
3m	1088660	1	164.09
4m	1088661	1	236.99
5m	1088662	1	271.78
6m	1088663	1	338.62
7m	1088664	1	415.22
8m	1088665	1	468.17
10m	1088666	1	516.44
12m	1088667	1	559.59

Step 2 - Choose your thermostat

Thermostat dial set



A simple to use dial thermostat. For use with the Comfort E system (max switching 16 Amps).

Description	Code	Qty	Price each
T-85 230V	1088705	1	82.50

Thermostat digital programme flush set



The T-86 thermostat is a multi-mode digital thermostat with program functions or standalone thermostat. Flush mounted for a clean finish (max switching 16 Amps).

Description	Code	Qty	Price each
T-86 230V	1088819	1	111.11

Contact us on 01923 927000 – enquiries.uk@uponor.com | 63

Step 3 - Accessories

Remote floor sensor



Spare remote floor sensor for the Comfort E range of thermostats. Please ensure the correct sensor is used for your thermostat.

Description	Length	Code	Qty	Price each
T-85 sensor	3m	1090944	1	24.02
T-86 sensor	3m	1047459	1	34.40

Auto Balance Technology – Achieve up to 20% reduction in your heating bills.

Uponor Auto Balance Technology* can generate up to 20% energy saving and 25% faster reaction compared to manually balanced systems. The technology is suitable for new build and renovation projects. In addition, Uponor's Auto Balance technology learns your usage patterns and adapts its control to provide the optimum thermal comfort

*All Uponor Smatrix controls include auto balance technology.

www.uponor.co.uk



Minitec – Low profile, high performance

Our Minitec system is a low profile underfloor heating solution which is only 15mm thick, making it ideal for renovation projects where you don't want to excavate the floors. Ideal for use with renewable technologies, Minitec heats up 60% quicker than standard underfloor heating systems and your installation will be fully completed in a matter of hours, ready to walk on after just 24 hours and ready to be used in three days.

www.uponor.co.uk



- ✓ Bonds directly to the subfloor.
- ✓ Ensures total pipe encapsulation.
- ✓ New build & renovation projects.
- ✓ Rapid heat-up times.
- ✓ Compatible with a variety of floor finishes.
- ✓ Suitable for installation on a variety of floor constructions.

uponor

Moving
➤ Forward

Underfloor Heating & Cooling

Step 1 – Pipe (Pipe & Accessories)	68
Step 2 – System (Uponor Systems)	70
Step 3 – Manifold (Manifolds & Water Temperature Controls)	77
Step 4 – Controls (Underfloor Heating & Cooling Room Controls)	83



uponor

Moving
➤ Forward

UFH Pipe & Accessories

	Renovation Systems		Traditional Systems		
	Minitec page 70	Siccus page 71	Solid Screed page 72	Timber HEPS page 74	Floating page 75
9.9mm PEX	✓				
12mm PEX		✓			
16mm PEX			✓	✓	✓
20mm PEX			✓	✓	
16mm MLC			✓	✓	✓

PEX Pipe

All PEX pipes are manufactured using cross-linked polyethylene (PE-Xa) acc. to BS EN 15875, including an EVOH oxygen diffusion barrier as per DIN 4726 suitable for application class 4 - Underfloor heating and low temperature radiators. Max design pressure 6 Bar at 70°C.

9.9mm Minitec Comfort pipe



Description	Code	Qty	Price each
9.9x1.1mm	1063287	60m	1.47
9.9x1.1mm	1063288	120m	1.47
9.9x1.1mm	1063289	240m	1.47
9.9x1.1mm	1063381	480m	1.47

12mm Comfort PEX pipe



Description	Code	Qty	Price per M
12x1.7mm	1063284	60m	2.32
12x1.7mm	1063285	120m	2.32
12x1.7mm	1063286	240m	2.32

Comfort Pipe Plus



Description	Code	Qty	Price per M
16x2mm	1062044	120m	1.41
16x2mm	1062045	240m	1.41
16x2mm	1062046	640m	1.41
20x2mm	1009229	60m	3.02
20x2mm	1009228	120m	3.02
20x2mm	1009230	240m	3.02
20x2mm	1009231	480m	3.02
25x2.3mm	1062888	220m	3.32
25x2.3mm	1062889	300m	3.38

Multilayer SAC pipe

All SAC pipes are manufactured as a 5 layer construction using a raised temperature polyethylene with a seamless aluminium diffusion layer (PERT-AL-PERT) acc. to BS EN 21003, suitable for application class 4 - Underfloor heating and low temperature radiators. Max design pressure 6 Bar at 70°C. Thanks to the new seamless technology, bend radii are up to 40% less than standard MLC.

16mm SAC pipe



Description	Code	Qty	Price per M
16x2mm	1096008	50m	2.47
16x2mm	1059576	100m	2.47
16x2mm	1092653	120m	2.49
16x2mm	1059577	200m	2.47
16x2mm	1059578	500m	2.47

Pipe Accessories

Pipe conduit



Made of high-density polyethylene. Supplied in coils. Details and prices of a wide range of other sizes of conduit are available on p.13. First number shown in description refers to I.D. of the protective tube. The second is the size of pipe suitable. N.B. Does not include pipe.

Description	Code	Qty	Price per M
23 Black (16mm)	1012864	50m	1.86

Pipe bend supports (metal)

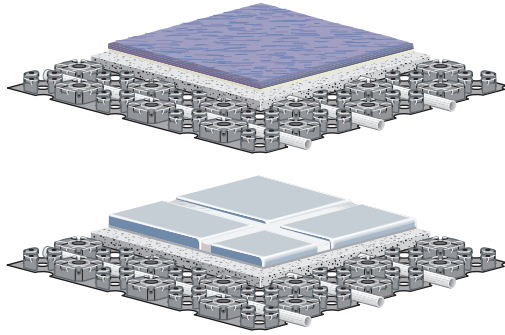


Bend supports are used where the PEX pipe is returning up from the floor towards the manifold. This creates a stable 90° bend making it easier for the installer to connect to the manifold.

Description	Code	Qty	Price each
9.9mm/12mm	1033974	10	1.74
16mm	1009004	10	2.52
20mm	1009233	10	3.75

UFH Systems

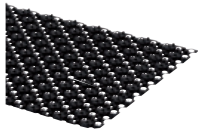
Minitec System



Benefits:

- Panel size: 1120 x 720mm.
- Total panel height: 12mm.
- Pipe dimensions: 9.9 x 1.1mm.
- Suitable for Uponor PE-Xa pipes.
- Diagonal pipe fixture for installation at 90° and 45° angles.
- Only 15mm build height including the screed.

Minitec panel



Castellated pipe positioning panel for use on Minitec systems only. Incorporates a self adhesive backing that can be applied direct to suitable structural floors.

Description	Code	Qty	Pack Price
6.2m ² pack (8 panels)	1083866	1	132.52

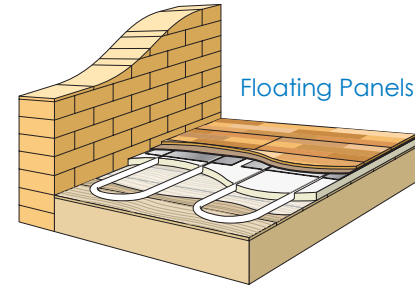
Minitec edging strip



For use on Minitec system, to reduce thermal bridging. Made of polyethylene with self adhesive backing and PE skirt providing tight seal between edge strip and insulation. Thermal resistance 0.22m²K/W. Supplied in 20m rolls, 80x8mm HxD.

Description	Code	Qty	Price per M
20m 80x8mm	1005267	20m	1.09

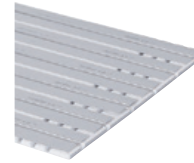
Siccus 12



Benefits:

- Can be laid directly on to an existing floor.
- Expanded polystyrene provides thermal insulation and improved performance.
- Can be easily adapted to suit different size and shaped rooms.
- Panels can easily be cut to accommodate additional pipe grooves.
- Low profile height.

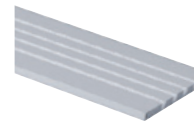
Siccus 12 floating panel (single)



Grooved polystyrene panel complete with heat emission plates glued to the top surface. Groove centres 125mm. Heat emission plates can be snapped off at the end to reveal turns and two straight grooves for feed/return. Allow approx. 1.2 pcs/m².

Description	Code	Qty	Price each
1200x750x15mm	1034338	10 panels	49.56

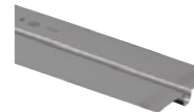
Siccus 12 floating panel (feed/return)



Grooved polystyrene panel for use where multiple feed pipes run to/from the manifold to the heated area. Groove centres 40mm.

Description	Code	Qty	Price each
1200x250x15mm	1034340	10 panels	5.98

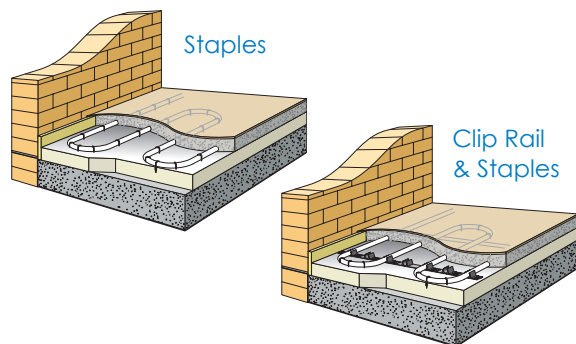
Siccus 12 heat emission plate



Aluminium metal plates for use with Uponor Siccus 12 feed/return panels. Single track for Uponor 12mm pipe.

Description	Code	Qty	Price each
1180x110mm	1034358	30 plates	3.28

Solid Screed Systems



Benefits:

- Secure pipe fixing method.
- Can be fixed directly to existing floor grade insulation.
- Can accommodate various pipe layouts and spacings.
- Low cost fixing system.

Fixings

Tacker pipe clip standard



Used for fixing 16-20mm pipe to insulation. The barb length is 22mm and requires a minimum of 25mm insulation depth. For use with Uponor Kombi gun 1002295.

Description	Code	Qty	Price each
40mm clip	1086529	1000	0.10

Tacker pipe clip long



Used for fixing 16-20mm pipe to most types of insulation. The barb length is 33mm and requires a minimum of 35mm insulation depth. For use with Uponor Kombi gun 1002295.

Description	Code	Qty	Price each
55mm clip	1086530	300	0.18

Fix clamp track nail



Used to hold Fix Clamp Track 16-20 in position or to provide additional fixing where required. Length 65mm.

Description	Code	Qty	Price each
65mm	1005291	500	0.18

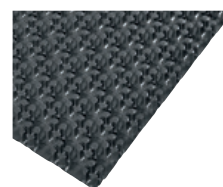
Fix clamp track 16–20



Self-adhesive universal clip rail made of PP, for Uponor pipes, 16mm to 20mm. Can be combined in any length, suitable for cutting to size. May be used with Fix Clamp track nail 1005291 for a more secure fastening to your insulation. Allow 1m/2m². Length of track: 1m. Width of track: 50mm. Space between pipe holders: 50mm.

Description	Code	Qty	Price each
16-20mm	1000018	100m	4.47

Pipe positioning panel 16



Castellated pipe positioning panel, designed to simplify the installation of 16mm pipes. For installation over suitable floor grade insulation. Dimensions of each panel 1447mm(L) x 900mm (W) x 18mm (H). Each pack covers 10m². Pipe spacing increments of 55mm/110mm/165mm/220mm/275mm/330mm

Description	Code	Qty	Price per M ²
Pipe positioning plate	1016703	10m ²	14.32

Insulation

Multi-foil



Multi-layer reflective insulating foil with printed grid pattern. Designed for use directly above standard floor grade insulation to provide a protective layer and improve heat insulation and distribution into a heated screed. Supplied in 60m x 1m rolls. Thermal resistance 0.09m²K/W.

Description	Code	Qty	Price per M ²
4mm foil insulation	1000017	60m ²	7.18

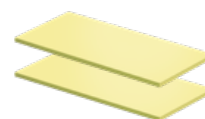
Multi edging strip



For use on solid screed floors as perimeter wall insulation, to reduce thermal bridging. Made of polyethylene with self adhesive backing and PE skirt providing tight seal between edge strip and insulation. Thermal resistance 0.22m²K/W. Supplied in 50m rolls, 150mm (H) x10mm (D).

Description	Code	Qty	Price per M
50m Roll	1000080	50m	1.34

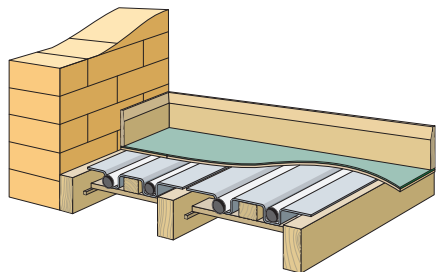
XPS Panels



Thermal Insulation made of XPS 300. Tongue and groove at sides for easy mounting. Thermal conductivity: $\lambda = 0.034 \text{ W/mK}$. EN 13501-1 fire classification: class E

Description	Code	Qty	Price per M
10 x 600 x 1250mm 40kg/M3	NEW 1084161	30m ²	194.76
20 x 600 x 1250mm 40Kg/M3	NEW 1084207	15.75m ²	173.98

Uponor Timber Floor Systems



Benefits:

- Can be laid directly on to existing traditional joists.
- Direct contact between plate and floor covering provides an efficient and highly responsive method of heat transfer.
- Options available for different joist pitches and sprung floor systems.

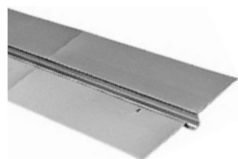
Siccus 16 double heat emission plate



For use with timber suspended floors, with joists at 400mm centres. Double track for Uponor 16mm pipe at 200mm centres. Plate dimension 1150 x 380mm. Each pack of 28 plates covers 15m² (based on 80% floor coverage).

Description	Code	Qty	Price each
U 16 HEP400	1034365	28 plates	14.66

Siccus 20 heat emission plate HEP300

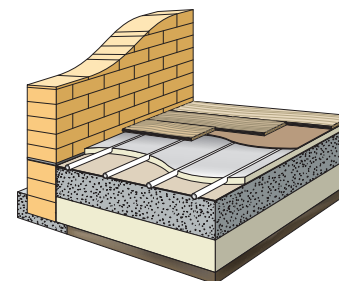


For use with timber suspended floors, with joists at 300mm centres or floating floor panels. Single track for Uponor Comfort Pipe Plus (PEX20) at 300mm centres. Plate dimensions 1150 x 280mm. Each pack of 40 plates covers 16m² (based on 80% floor coverage).

Description	Code	Qty	Price each
PEX 20 HEP300	1009132	40 plates	11.09

Uponor Floating Floor Systems

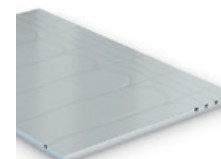
Siccus FX System



Benefits:

- 'All in One' panel design.
- Pre-formed 16mm pipe grooves.
- Bonded heavy duty aluminium foil.
- 30mm thick EPS200 panel.
- 100% emitter floor coverage area.
- Dry trade only installation.
- Ideal for renovation and new build projects.

Siccus FX Panel



Grooved polystyrene insulation panel with prefabricated and applied aluminium heat conductive layer for 16mm Uponor underfloor heating pipes at 200mm centres. Panel dimensions 1200 x 800 x 30mm. Material: expanded polystyrene rigid foam acc BS EN 13163. Application type acc DIN 4180-10: DEO. Fire classification BS EN 13501: class E. Compressive strength: 200 kPa. Thermal resistance: 0.91 m² K/W.

Description	Panel Size	Code	Qty	Price each
1200 x 800 x 30mm	0.95M ²	1086316	10	28.52

Underfloor Heating Course

One day training course dedicated to underfloor heating is available either online or at our Watford HQ. The course provides a general overview on pipe technology, floor constructions, manifolds and controls.

For booking or further information, please email marketing.uk@uponor.com



uponor

Moving
Forward

Step 3 – Manifold

UFH Manifolds & Water Temperature Controls



Manifold

1086538
1086539
1086540
1086541
1086542
1086543
1086544



Pump set

1094185
1094185
1094185
1094185
1094185
1094185
1094185

Vario S Flowmeter Manifold



Uponor Vario S Flowmeter Manifold is a stainless steel manifold for use in radiant heating systems, where flow needs to be shown. The 3/4" Eurocone connectors allow for the connection of all Uponor pipe dimensions (Eurocone adapters P80). Which makes this manifold universal for Uponor underfloor heating systems. Comes complete with fill and drain points, 1" swivel connectors and valve pins for actuator control.
(Not suitable for 60°C+ systems)

Description	Code	Qty	Price each
2-PORT	1086538	1	135.25
3-PORT	1086539	1	164.70
4-PORT	1086540	1	191.96
5-PORT	1086541	1	226.60
6-PORT	1086542	1	256.96
7-PORT	1086543	1	294.17
8-PORT	1086544	1	324.00
9-PORT	1086545	1	371.72
10-PORT	1086546	1	405.55
11-PORT	1086547	1	445.94
12-PORT	1086548	1	479.35
13-PORT	1088864	1	522.70
14-PORT	1088865	1	564.15
15-PORT	1088866	1	586.77
16-PORT	1088867	1	644.47

Contact us on 01923 927000 – enquiries.uk@uponor.com | 77

Vario S Lockshield Manifold

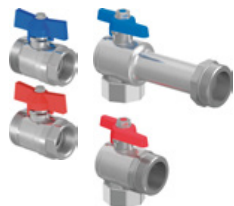


Uponor Vario S Lockshield Manifold is a stainless steel manifold for use in radiant heating systems, where balancing is done by a hex key. The 3/4 Eurocone connectors allow for the connection of all Uponor pipe dimensions (Eurocone adapters P80). The manifold is universal for all Uponor underfloor heating systems. Comes complete with fill and drain points, 1" swivel connectors and valve pins for actuator control. (Suitable for radiator systems)

Description	Code	Qty	Price each
2-PORT	1088045	1	124.73
3-PORT	1088046	1	154.18
4-PORT	1088047	1	177.79
5-PORT	1088048	1	208.25
6-PORT	1088049	1	235.55
7-PORT	1088050	1	268.67
8-PORT	1088051	1	294.69
9-PORT	1088052	1	335.59
10-PORT	1088053	1	368.26
11-PORT	1088054	1	403.97
12-PORT	1088055	1	433.37
13-PORT	1088868	1	456.87
14-PORT	1088869	1	491.44
15-PORT	1088870	1	525.99
16-PORT	1088871	1	562.10

Vario S Manifold Accessories

Vario 1" Ball Valve



Manifold isolation valves for use with Vario S range. Supplied as a pair.

Description	Code	Qty	Price each
3/4" – 1" straight	1086558	1	29.37
3/4" – 1" elbow	1086559	1	38.82
1" – 1" straight	1059132	1	40.49

Commercial & Industrial Manifolds

Vario PLUS Manifolds



Made of a reinforced glass fibre polyamide body. Its primary use is for underfloor heating and cooling applications as it is less prone to corrosion and condensation. It is available in modules of 1, 3, 4 and 6 loops with corresponding connection sets sold separately. The secondary connectors allow the connection of all Uponor pipe dimensions (Eurocone adapters P80).

Flowmeter Description	Code	Qty	Price each
1-PORT	1042471	1	44.55
3-PORT	1030583	1	121.29
4-PORT	1030584	1	158.42
6-PORT	1030585	1	232.58

Lockshield Description	Code	Qty	Price each
1-PORT	1042420	1	37.36
3-PORT	1030580	1	99.61
4-PORT	1030581	1	129.51
6-PORT	1030582	1	189.24

Vario PLUS Accessories



Vario PLUS termination kits are required to complete the Vario PLUS manifold installation. Both kits contain brackets, end caps and thermometers. In the K1 kit, you also get a bypass valve and in the K2 kit, you also get an automatic air vent.

Description	Code	Qty	Price each
K1 Bypass kit	1009209	1	98.36
K2 Airvent Kit	1046882	1	99.11

Magna Manifold



Magna Manifold range of 1, 2 or 3 port units for connection with additional segments and basic kit. Supply-segment with control valves for pre-adjustment, return-segment with thermostat upper section including cap for locking. Uponor actuator can be mounted directly on the return. Heating loop connection for PE-Xa pipe 25x2.3 with compression adapter.

Description	Code	Qty	Price each
Magna manifold 1 x 25mm	NEW 1121535	1	90.50
Magna manifold 2 x 25mm	NEW 1121536	1	180.50
Magna manifold 3 x 25mm	NEW 1121537	1	270.50
Magna manifold 1 x 3/4"	NEW 1121532	1	88.50
Magna manifold 2 x 3/4"	NEW 1121533	1	168.50
Magna manifold 3 x 3/4"	NEW 1121534	1	240.50

Magna Accessories



Includes manifold brackets, filling valves, thermometer, manometer, endcaps and primary pipe connectors. **One kit is required per MAGNA manifold.**

Description	Code	Qty	Price each
Manifold Kit	1045815	1	205.51
1 1/2" Ball valves (pair)	1030135	1	122.41

Step 3 – Manifold

Eurocone Compression Adapters



For connection of pipes to the Uponor UFH manifold range.

Description	Code	Qty	Price each
9.9x3/4" PEX - 3 piece fitting	1013426	1	6.36
12x3/4" PEX - 2 piece fitting	1065282	1	6.88
16x3/4" PEX - 3 piece fitting	1057441	1	7.85
16x3/4" MLC & SAC - 2 piece fitting (Chrome)	1058090	1	5.08
20x3/4" PEX - 2 piece fitting	1065290	1	5.86

Compression Repair Connector



For the repair of damaged 12, 16, & 20mm pipes. You will need to order 2 x adaptors from above section.

Description	Code	Qty	Price each
12/16/20	1006641	20	5.97

Minitec Compression Coupling



For repair of damaged 9.9mm (Minitec) pipe. Please note to ensure a level finish as this sits higher than the Minitec Panel a channel will be required.

Description	Code	Qty	Price each
9.9-9.9mm	1016690	1	15.64

Minitec Q&E Repair Connector



For repair of damaged 9.9mm (Minitec) pipe, includes 1 x connector and 2 x Q&E rings. *M12 tool required **1095097** page 113, and expander head **1119380**.

Description	Code	Qty	Price each
9.9x1.1mm	1005264	10	5.52

"Y" Compression Adapter



Compression splitter for use on Push 12 Pumpset. Pipe runs should be of equal length. **Supplied as a pair.**

Description	Code	Qty	Price each
2x9.9x3/4" FT (Minitec)	1016692	1	26.85
2x3/4"x3/4" FT (12, 16, 20)	1005675	1	39.52

Pump Groups

Fluvia MPG-UK Mixing Control



Suitable for up to 16kW heating load, this compact, lightweight underfloor thermostatic mixing control, complete with Wilo Para pump, is ideal for local blending and pumping of UFH water. The unit has been designed for direct connection to heating manifolds and is supplied fully assembled with G1" swivel nuts and O ring seals supplied already configured for a L/H installation, but can easily reconfigure for R/H applications. This pump pack consists of two isolating ball valves, red lever flow inlet and blue lever return.

We recommend to fit a strainer before the mixing valve.

Description	Code	Qty	Price each
230v	1094185	1	578.52

230V Actuator



For motorised water temperature control when used with the Smatrix Move controller. Can be used with Viva 3 port mixing valve range.

Description	Code	Qty	Price each
230V	1002357	1	293.88

Smatrix Move Controller



UFH water temperature control (supply) with outdoor sensor

*Please ensure Uponor actuator is used (1002357).

Description	Code	Qty	Price each
H X-157 wired	1071693	1	284.18

Viva 3-port Mixing Valve



Made from DZR brass. Rotary shoe valve used to blend the system water to the required temperature.

Description	Code	Qty	Price each
3/4"s Kv6.3	1002014	1	128.45

Easy fit, smart kit New Smatrix Pulse room temperature control with full smart home connectivity.

- ✓ **Easy control:** Intuitive control via the Smatrix Pulse app or your favourite smart speaker.
- ✓ **Personal comfort:** Create your ambient comfort zone with individual preferences and adaptive comfort functions.
- ✓ **Energy efficiency:** With innovative Autobalancing technology and smart analysis features.



uponor

Moving
➤ Forward

Heating & Cooling Room Controls (Wired)

Welcome to Smatrix Pulse ; a smart home control system for your heating and cooling.

- Offers up to 48 heating control zones, all set up and controlled via an easy to use app.
- Thanks to this advanced control you can now adjust your heating with your voice via the Alexa or Google smart home controls.
- No internet? No worries! With the unique way our signals are sent, the unit will make its own network allowing for tethering to the control network when you are local.
- Backward compatible – all existing Smatrix thermostats will work with the new controls.

Smatrix Pulse controller – wired



6 channel smart wired heating/cooling controller. This provides smart home control and allows for individual area control of up to 6 zones. Also provides central control of heating and cooling equipment.

Description	Code	Qty	Price each
X-245 Wired UK 6X	1093018	1	184.90

Smatrix Pulse slave module – wired



6 channel module for the addition of 6 extra zones onto the main Smatrix Pulse wired controller.

Description	Code	Qty	Price each
M-242 Wired 6X	1093134	1	60.10

Smatrix Pulse module



The Smatrix Pulse module forms part of the interface between your local controls and the cloud network to allow for the full app and voice control of your system. This is highly recommended to unlock all features of the system. **Good and reliable signal is required for the app control.**

Description	Code	Qty	Price each
R-208 Pulse Module	1093030	1	401.07

Smatrix Base MODBUS RTU X-148



To complement the existing Smatrix Pro controller (X-147) which allows control with KNX systems. The X-148 operates with the Smatrix range of BASE Thermostats and Actuators.

Description	Code	Qty	Price each
MODBUS RTU X-148	1120013	1	476.08

For all wired thermostats and accessories please see pages 84-86

Contact us on 01923 927000 – enquiries.uk@uponor.com | 83

Smatrix Base – Multi-Zone Wired

Smatrix Base Pro controller



A wired radiant heating/cooling controller. The controller sends and receives data to and from the room thermostats and sensors to control thermal actuators and other heating/cooling equipment. Can be added to Smatrix Base Pro interface to expand the system to up to 16 controllers depending on specific installation size.

Description	Code	Qty	Price each
X-147 UK 6X	1087417	1	299.36

Smatrix Base interface



A wired heating / cooling interface unit when used with the X-147 controller allows control and adjustment of up to 16 controllers depending on specific installation size.

Description	Code	Qty	Price each
i-147 interface	1087161	1	331.87

Smatrix Base slave module



A 6 channel controller slave module M-140. The controller slave can be added to a Smatrix Base or Smatrix Base Pro controller, to expand the available channels (6) and actuator outputs (6).

Description	Code	Qty	Price each
M-140 BUS 6X	1071686	1	63.72

Smatrix Base dial thermostat



A wired dial single room temperature sensor. It measures the perceived room temperature and transmits the values to the wired controller.

Description	Code	Qty	Price each
T-145 BUS POD	1086975	1	34.22

Smatrix Base public thermostat



A wired room thermostat for tamper proof locations. In addition, different sensor functions can be set via dip switches such as a floor sensor, a remote sensor or/and outdoor sensor.

Description	Code	Qty	Price each
T-143 BUS	1086972	1	33.57

Smatrix Base digital thermostat



A wired digital thermostat with large backlit display. It measures and displays the room temperature, transmitting the values to the wired controller.

Description	Code	Qty	Price each
T-146 BUS	1086976	1	57.51

Smatrix Base programmable thermostat



A wired digital programmable thermostat with Rh sensor and large backlit display. It measures/displays the room temperature and Rh, then transmits the values to the Smatrix Base controller.

Description	Code	Qty	Price each
+RH T-148 BUS	1086977	1	71.53

Smatrix Base Style digital thermostat



A wired digital thermostat with Rh sensor and E Ink display. It measures/ displays the room temperature and Rh, then transmits the values to the Smatrix Pulse or Base Pro controller.

Description	Code	Qty	Price each
T-149 White	1087813	1	119.82
T-149 Black	1087814	1	131.93

Smatrix Base Style sensor



A wired, discreet sensor for use with the Smatrix Pulse or Base Pro system. It measures room temperature and sends the information to the Pulse module or Base Pro interface.

Description	Code	Qty	Price each
T-141	1087812	1	61.84

Smatrix Base – Multi-Zone Wired

Smatrix floor sensor



The Smatrix floor sensor can be combined with selected Smatrix room thermostats.

Description	Code	Qty	Price each
S-1XX	1071684	1	10.47

Smatrix Base bus cable



A 4 core Smatrix bus cable, individually shielded for interference protection.

Description	Code	Qty	Price each
A-145 50M	1071670	1	153.26

Smatrix wall frame



The Smatrix wall frame for all Smatrix thermostats.

Description	Code	Qty	Price each
T-X A-1XX	1086986	1	3.75

Smatrix Style adaptor



For installing the Smatrix Style thermostat onto a solid wall.

Description	Code	Qty	Price each
A-14X White	1087821	1	5.05
A-14X Black	1087822	1	4.93

Smatrix relay module



A relay module used as an interface between a Uponor Smatrix control system and a heating/cooling source for switching between heating and cooling automatically.

Description	Code	Qty	Price each
H/C M-1XX 24V	1083576	1	66.04

Thermal actuator



Suitable for use with the full Uponor manifold range. Includes open/closed indicator with pre-opened function for ease of install. Please ensure you select the correct actuator for your manifold.

Description	New Code	Qty	Price each
24V for Vario S Manifolds	1013008	1	37.49
24V for Magna & Vario Plus Manifolds	1000138	1	47.97

Heating & Cooling Room Controls (Wireless)

Welcome to Smatrix Pulse ; a smart home control system for your heating and cooling.

- Offers up to 48 heating control zones, all set up and controlled via an easy to use app.
- Thanks to this advanced control you can now adjust your heating with your voice via the Alexa or Google smart home controls.
- No internet? No worries! With the unique way our signals are sent, the unit will make its own network allowing for tethering to the control network when you are local.
- Backward compatible – all existing Smatrix thermostats will work with the new controls.

Smatrix Pulse controller – wireless



6 channel smart wireless heating/cooling controller. This provides smart home control and allows for individual area control of up to 6 zones. Also provides central control of heating and cooling equipment.

Description	Code	Qty	Price each
X-265 Wireless UK 6X	1093022	1	286.18

Smatrix Pulse slave module – wireless



6 channel module for the addition of 6 extra zones onto the main Smatrix Pulse wireless controller.

Description	Code	Qty	Price each
M-262 Wireless 6X	1093133	1	82.61

Smatrix Pulse module



The Smatrix Pulse module forms part of the interface between your local controls and the cloud network to allow for the full app and voice control of your system. This is highly recommended to unlock all features of the system. **Good and reliable signal is required for the app control.**

Description	Code	Qty	Price each
R-208 Pulse Module	1093030	1	401.07

For all wireless thermostats and accessories please see pages 89–90

Underfloor Heating packs compatible with Smatrix Pulse App

Underfloor heating packs come with everything required to successfully place UFH in a variety of different project types including screed, timber and low-profile applications. Once installed, the UFH system can be accessed remotely thanks to its Smatrix Wave Pulse app, available via the App Store or Google play. Discuss your design with us: enquiries.uk@uponor.com



- ✓ Average pack up to 70 sq/m.
- ✓ Screed – Timber – Minitec.
- ✓ Smatrix Wave Pulse control.
- ✓ New build or renovation projects.

uponor

Moving
➤ Forward

Step 4 – Controls

Smatrix Wave – Multi-Zone Radio

Smatrix Wave dial thermostat



A wireless dial single room temperature sensor. It measures the perceived room temperature, transmitting the values to the wireless control unit.

Description	Code	Qty	Price each
Standard T-165 POD	1086981	1	55.93

Smatrix Wave public thermostat



A wireless single room temperature sensor for public buildings. In addition, different sensors functions such as a floor sensor, a remote sensor or outdoor sensor can be set via dip switch. It measures the perceived temperature and transmits the values to the wireless controller.

Description	Code	Qty	Price each
T-163	1086979	1	54.31

Smatrix Wave digital thermostat



A wireless digital thermostat with large backlit display. It measures and displays the room temperature, transmitting the values to the wireless controller.

Description	Code	Qty	Price each
T-166	1086982	1	78.85

Smatrix Wave Style thermostat



A stylish wireless digital thermostat with Rh sensor and E Ink display. It measures/ displays the room temperature and Rh, and subsequently transmits the values to the Smatrix wireless controller.

Description	Code	Qty	Price each
T-169 White	1087816	1	127.88
T-169 Black	1087817	1	133.06

Smatrix Wave programmable thermostat



A wireless digital programmable thermostat with Rh sensor and large backlit display. It measures and displays the room temperature and Rh, and subsequently transmits the values to the wireless controller.

Description	New code	Qty	Price each
+RH T-168	1086984	1	91.46

Smatrx Wave Style room sensor



Discreet wireless sensor for use with the Smatrx Wave system. It measures room temperature and sends the information to the Smatrx App control.

Description	Code	Qty	Price each
T-161	1087815	1	71.75

Smatrx wall frame



The Smatrx wall frame for Smatrx thermostats.

Description	New code	Qty	Price each
T-X A-1XX	1086986	1	3.75

Smatrx sensor floor/remote



The Smatrx floor/remote sensor can be combined with selected room thermostats out of the Smatrx Base, Smatrx Wave portfolio.

Description	Code	Qty	Price each
S-1XX	1071684	1	10.47

Smatrx Wave relay module



A wireless dual output receiver which can be used to switch different devices on or off. In addition it can be used for a wireless H/C switch over between the Smatrx room control system and the supply water controller or heat source.

Description	Code	Qty	Price each
M-161 2X	1071658	1	86.51

Smatrx relay module



A relay module used as interface between a Smatrx control system and a heating/cooling source for switching between heating and cooling automatically.

Description	Code	Qty	Price each
H/C M-1XX 24V	1083576	1	66.04

Thermal actuator



Suitable for use with the full Uponor manifold range. Includes open/closed indicator with pre-opened function for ease of install. Please ensure you select the correct actuator for your manifold.

Description	New Code	Qty	Price each
24V for Vario S Manifolds	1013008	1	37.49
24V for Magna & Vario Plus Manifolds	1000138	1	47.97

YOUR EASY TO FIT SMART KIT



Uponor Smatrx Pulse Starter Sets

All the benefits of the new Smatrx Pulse system is now in a handy kit. Available in two sizes it allows for easy picking of a complete smart home control system whilst giving a cost saving on individual items.

Wired Starter Set S

1 x Uponor Smatrx Pulse Module
1 x Uponor Smatrx Pulse Controller
3 x Uponor Smatrx Style Thermostat

1093281 £850.88 Saving 10%

Wired Starter Set L

1 x Uponor Smatrx Pulse Module
2 x Uponor Smatrx Pulse Controller
5 x Uponor Smatrx Style Thermostat

1093283 £1232.98 Saving 10%

Wireless Starter Set S

1 x Uponor Smatrx Pulse Module
1 x Uponor Smatrx Pulse Controller
3 x Uponor Smatrx Style Thermostat

1093285 £963.80 Saving 10%

Wireless Starter Set L

1 x Uponor Smatrx Pulse Module
2 x Uponor Smatrx Pulse Controller
5 x Uponor Smatrx Style Thermostat

1093288 £1449.42 Saving 10%

*Savings based on purchase of individual items.

Wired 230V Controls & Accessories

Wired 230V wiring centre



Controls up to 8 room stats and 16 manifold actuators. Includes two volt free relays for pump and boiler control. Night setback facility when used with remote time clock.

Description	Code	Qty	Price each
White 230V	1047456	1	210.73

Wired 230V digital programmable thermostat



Modern slim design, only 13mm depth after installation. Energy saving feature calculates heat up time of system. Includes holiday mode, temporary over-ride and specified duration, 5/2 or 7 day programme, floor temperature control, lock facility, status display on current thermostat mode (requires 35mm electrical back box).

Description	Code	Qty	Price each
T-26	1058425	1	106.33

Smatrix Base 230V thermostat



Allows thermal comfort control with 230v supply without programming each zone. The Smatrix T-27 thermostat operates with the Smatrix floor sensor allowing both air and floor temperature control, the Smatrix 230v controller (1047456) and 230v Actuators (1013006).

Description	Code	Qty	Price each
T-27	1120075	1	86.55

Wired 230V remote sensor



Optional 3m long sensor for control and regulation of remote temperature.

Description	Code	Qty	Price each
3m	1047459	1	34.40

Thermal actuator



Suitable for use with the full Uponor manifold range. Includes open/closed indicator with pre-opened function for ease of install. Please ensure you select the correct actuator for your manifold.

Description	New Code	Qty	Price each
230V for Vario S Manifolds	1013006	1	37.84
230V for Magna & Vario Plus Manifolds	1005605	1	40.29

ECOFLEX VIP

Flexible, durable and suitable for complex designs and projects.

Ecoflex VIP represents the next generation of pre-insulated pipes. The hybrid design combines the performance of a unique Vacuum Insulated Panel (VIP) with the usual bonded and unbonded insulation providing significantly minimised heat and energy losses and improved flexibility.

www.uponor.co.uk/ecoflex-vip





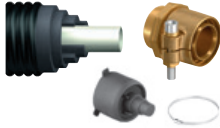
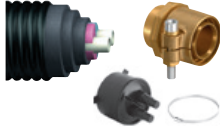
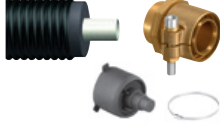

- ✓ Reduces heat loss.
- ✓ Reduces operational costs.
- ✓ Reduces installation time and costs.
- ✓ Reduces CO₂ emissions.



uponor

Moving
➤ Forward

Pipe & Fitting Selector Tool

To help you select the correct fittings needed for each type of Uponor pipe

To help you select the correct fittings needed for each type of Uponor pipe			Stage 1			Stage 2			Stage 3		
			Pick your application pipe and length...			Pick your end cap, one for each end...			Pick your coupler... (quantity per pipe end)		
Thermo VIP Single	Pipe and length		Rubber end-cap	Quantity		WIPEX Coupling, 6 bar	Quantity				
	1095714 40/140	<input type="checkbox"/>	1018314 40+50+63/140	1	<input type="checkbox"/>	1018330 40x1 1/2"	6bar	1	<input type="checkbox"/>		
	1095715 50/140	<input type="checkbox"/>	1018314 40+50+63/140	1	<input type="checkbox"/>	1018331 50x1 1/2"	6bar	1	<input type="checkbox"/>		
	1095716 63/140	<input type="checkbox"/>	1018314 40+50+63/140	1	<input type="checkbox"/>	1018332 63x2"	6bar	1	<input type="checkbox"/>		
	1095717 75/140	<input type="checkbox"/>	1095801 75/140	1	<input type="checkbox"/>	1018333 75x2"	6bar	1	<input type="checkbox"/>		
	1095718 90/175	<input type="checkbox"/>	1018311 90+110/175	1	<input type="checkbox"/>	1018334 90x3"	6bar	1	<input type="checkbox"/>		
	1095719 110/175	<input type="checkbox"/>	1018311 90+110/175	1	<input type="checkbox"/>	1018335 110x3"	6bar	1	<input type="checkbox"/>		
1095720 125/200	<input type="checkbox"/>	1067757 125/200	1	<input type="checkbox"/>	1078368 125x4"	6bar	1	<input type="checkbox"/>			
Thermo VIP Twin	Pipe and length		Rubber end-cap	Quantity		WIPEX Coupling, 6 bar	Quantity				
	1118580 2x25/140	<input type="checkbox"/>	1018245 2x25+32/140	1	<input type="checkbox"/>	1018328 25x1"	6bar	2	<input type="checkbox"/>		
	1118581 2x32/140	<input type="checkbox"/>	1018245 2x25+32/140	1	<input type="checkbox"/>	1018329 32x1"	6bar	2	<input type="checkbox"/>		
	1118582 2x40/175	<input type="checkbox"/>	1018309 2x40/175	1	<input type="checkbox"/>	1018330 40x1 1/2"	6bar	2	<input type="checkbox"/>		
	1118583 2x50/175	<input type="checkbox"/>	1018308 2x50/175	1	<input type="checkbox"/>	1018331 50x1 1/2"	6bar	2	<input type="checkbox"/>		
	1118584 2x63/200	<input type="checkbox"/>	1018307 2x75/250	1	<input type="checkbox"/>	1018332 63x2"	6bar	2	<input type="checkbox"/>		
	1118585 2x75/250	<input type="checkbox"/>	1088979 2x75/250	1	<input type="checkbox"/>	1018333 75x2"	6bar	2	<input type="checkbox"/>		
Thermo Single	Pipe and length		Rubber end-cap	Quantity		WIPEX Coupling, 6 bar	Quantity				
	1018109 25/140	<input type="checkbox"/>	1018315 25+32/140	1	<input type="checkbox"/>	1018328 25x1"	6bar	1	<input type="checkbox"/>		
	1018110 32/140	<input type="checkbox"/>	1018315 25+32/140	1	<input type="checkbox"/>	1018329 32x1"	6bar	1	<input type="checkbox"/>		
	1018111 40/175	<input type="checkbox"/>	1018313 32+40+50/175	1	<input type="checkbox"/>	1018330 40x1 1/2"	6bar	1	<input type="checkbox"/>		
	1018112 50/175	<input type="checkbox"/>	1018313 32+40+50/175	1	<input type="checkbox"/>	1018331 50x1 1/2"	6bar	1	<input type="checkbox"/>		
	1018113 63/175	<input type="checkbox"/>	1018312 63+75/175	1	<input type="checkbox"/>	1018332 63x2"	6bar	1	<input type="checkbox"/>		
	1018114 75/200	<input type="checkbox"/>	1018310 75+90+110/200	1	<input type="checkbox"/>	1018333 75x2"	6bar	1	<input type="checkbox"/>		
	1018115 90/200	<input type="checkbox"/>	1018310 75+90+110/200	1	<input type="checkbox"/>	1018334 90x3"	6bar	1	<input type="checkbox"/>		
	1018116 110/200	<input type="checkbox"/>	1018310 75+90+110/200	1	<input type="checkbox"/>	1018335 110x3"	6bar	1	<input type="checkbox"/>		
Thermo Twin	Pipe and length		Rubber end-cap	Quantity		WIPEX Coupling, 6 bar	Quantity				
	1018134 2x25/175	<input type="checkbox"/>	1018309 2x 25+32+40/175	1	<input type="checkbox"/>	1018328 25x1"	6bar	2	<input type="checkbox"/>		
	1018135 2x32/175	<input type="checkbox"/>	1018309 2x 25+32+40/175	1	<input type="checkbox"/>	1018329 32x1"	6bar	2	<input type="checkbox"/>		
	1018136 2x40/175	<input type="checkbox"/>	1018309 2x 25+32+40/175	1	<input type="checkbox"/>	1018330 40x1 1/2"	6bar	2	<input type="checkbox"/>		
	1018137 2x50/200	<input type="checkbox"/>	1018307 2x 40+50+63/200	1	<input type="checkbox"/>	1018331 50x1 1/2"	6bar	2	<input type="checkbox"/>		
	1018138 2x63/200	<input type="checkbox"/>	1018307 2x 40+50+63/200	1	<input type="checkbox"/>	1018332 63x2"	6bar	2	<input type="checkbox"/>		
Thermo Mini	Pipe and length		Rubber end-cap	Quantity		WIPEX Coupling, 6 bar	Quantity				
	1018132 25/68	<input type="checkbox"/>	1018316 25+32/68	1	<input type="checkbox"/>	1018328 25x1"	6bar	1	<input type="checkbox"/>		
	1018133 32/68	<input type="checkbox"/>	1018316 25+32/68	1	<input type="checkbox"/>	1018329 32x1"	6bar	1	<input type="checkbox"/>		
Thermo HP	Pipe and length		Rubber end-cap	Quantity		WIPEX Coupling	Quantity				
	1093894 2x32+2x32/140	<input type="checkbox"/>	1086838 140 Thermo HP	1	<input type="checkbox"/>	1018329 32x1"	6bar	2	<input type="checkbox"/>		
	1093895 2x40+2x32/175	<input type="checkbox"/>	1094252 175 Thermo HP	1	<input type="checkbox"/>	1018330 40x1 1/2"	6bar	2	<input type="checkbox"/>		

	Stage 1			Stage 2			Stage 3			
	Pick your application pipe and length...			Pick your end cap, one for each end...			Pick your coupler... (quantity per pipe end)			
Aqua VIP Single	Pipe and length			Rubber end-cap	Quantity		WIPEX Coupling	Quantity		
	1119047 40/140	<input type="checkbox"/>		1018314 40+50+63/140	1	<input type="checkbox"/>	1018339 40x1 1/2"	10bar	1	<input type="checkbox"/>
	1119048 50/140	<input type="checkbox"/>		1018314 40+50+63/140	1	<input type="checkbox"/>	1018340 50x1 1/2"	10bar	1	<input type="checkbox"/>
	1119049 63/140	<input type="checkbox"/>		1018314 40+50+63/140	1	<input type="checkbox"/>	1018341 63x2"	10bar	1	<input type="checkbox"/>
	1119050 75/140	<input type="checkbox"/>		1095801 75/140	1	<input type="checkbox"/>	1018342 75x2"	10bar	1	<input type="checkbox"/>
	1119051 90/175	<input type="checkbox"/>		1018311 90+110/175	1	<input type="checkbox"/>	1018343 90x3"	10bar	1	<input type="checkbox"/>
	1119052 110/175	<input type="checkbox"/>		1018311 90+110/175	1	<input type="checkbox"/>	1023170 110x3"	10bar	1	<input type="checkbox"/>
Aqua VIP Twin	Pipe and length			Rubber end-cap	Quantity		WIPEX Coupling	Quantity		
	1119053 20+25/140	<input type="checkbox"/>		1119374 20+25+32/140	1	<input type="checkbox"/>	1018336 25x1"	10bar	1	<input type="checkbox"/>
							1008663+ring 20x3/4"		1	<input type="checkbox"/>
	1119054 20+32/140	<input type="checkbox"/>		1119374 20+25+32/140	1	<input type="checkbox"/>	1018338 32x1"	10bar	1	<input type="checkbox"/>
							1008663+ring 20x3/4"		1	<input type="checkbox"/>
	1119055 25+40/175	<input type="checkbox"/>		1018309 25+32+40/175	1	<input type="checkbox"/>	1018339 40x1 1/2"	10bar	1	<input type="checkbox"/>
	1119056 32+50/175	<input type="checkbox"/>		1018308 25+32+50/175	1	<input type="checkbox"/>	1018336 25x1"	10bar	1	<input type="checkbox"/>
							1018340 50x1 1/2"	10bar	1	<input type="checkbox"/>
							1018338 32x1"	10bar	1	<input type="checkbox"/>
Aqua Single	Pipe and length			Rubber end-cap	Quantity		WIPEX Coupling	Quantity		
	1018117 25/140	<input type="checkbox"/>		1018315 25+32/140	1	<input type="checkbox"/>	1018336 25x1"	10bar	1	<input type="checkbox"/>
	1018118 32/140	<input type="checkbox"/>		1018315 25+32/140	1	<input type="checkbox"/>	1018338 32x1"	10bar	1	<input type="checkbox"/>
	1018119 40/175	<input type="checkbox"/>		1018313 32+40+50/175	1	<input type="checkbox"/>	1018339 40x1 1/2"	10bar	1	<input type="checkbox"/>
	1018120 50/175	<input type="checkbox"/>		1018313 32+40+50/175	1	<input type="checkbox"/>	1018340 50x1 1/2"	10bar	1	<input type="checkbox"/>
	1018121 63/175	<input type="checkbox"/>		1018312 63+75/175	1	<input type="checkbox"/>	1018341 63x2"	10bar	1	<input type="checkbox"/>
	1018122 75/200	<input type="checkbox"/>		1018310 75+90+110/200	1	<input type="checkbox"/>	1018342 75x2"	10bar	1	<input type="checkbox"/>
	1018123 90/200	<input type="checkbox"/>		1018310 75+90+110/200	1	<input type="checkbox"/>	1018343 90x3"	10bar	1	<input type="checkbox"/>
	1036036 110/200	<input type="checkbox"/>		1018310 75+90+110/200	1	<input type="checkbox"/>	1023170 110x3"	10bar	1	<input type="checkbox"/>
Aqua Twin	Pipe and length			Rubber end-cap	Quantity		WIPEX Coupling	Quantity		
	1018139 25+25/175	<input type="checkbox"/>		1018309 2x25+32+40/175	1	<input type="checkbox"/>	1018336 25x1"	10bar	2	<input type="checkbox"/>
	1018140 32+25/175	<input type="checkbox"/>		1018309 2x25+32+40/175	1	<input type="checkbox"/>	1018338 32x1"	10bar	1	<input type="checkbox"/>
							1018336 25x1"	10bar	1	<input type="checkbox"/>
	1018141 40+25/175	<input type="checkbox"/>		1018309 2x25+32+40/175	1	<input type="checkbox"/>	1018339 40x1 1/2"	10bar	1	<input type="checkbox"/>
							1018336 25x1"	10bar	1	<input type="checkbox"/>
	1018142 50+25/175	<input type="checkbox"/>		1018308 2x25+32+50/175	1	<input type="checkbox"/>	1018340 50x1 1/2"	10bar	1	<input type="checkbox"/>
							1018336 25x1"	10bar	1	<input type="checkbox"/>
Quattro	Pipe and length			Rubber end-cap	Quantity		WIPEX Coupling	Quantity		
	1018147 2x25/25+25/175	<input type="checkbox"/>		1018306 175 Quattro	1	<input type="checkbox"/>	1018328 25x1"	6bar	2	<input type="checkbox"/>
							1018336 25x1"	10bar	2	<input type="checkbox"/>
	1018148 2x32/25+25/175	<input type="checkbox"/>		1018306 175 Quattro	1	<input type="checkbox"/>	1018329 32x1"	6bar	2	<input type="checkbox"/>
							1018336 25x1"	10bar	2	<input type="checkbox"/>
							1018329 32x1"	6bar	2	<input type="checkbox"/>
	1018149 2x32/32+25/175	<input type="checkbox"/>		1018306 175 Quattro	1	<input type="checkbox"/>	1018338 32x1"	10bar	1	<input type="checkbox"/>
							1018336 25x1"	10bar	1	<input type="checkbox"/>
Supra / Supra +	Pipe and length			Rubber end-cap	Quantity		WIPEX Coupling	Quantity		
	1095722 25/68	<input type="checkbox"/>		1018316 25+32/68	1	<input type="checkbox"/>	1018328 25x1"		1	<input type="checkbox"/>
	1095723 32/68	<input type="checkbox"/>		1018316 25+32/68	1	<input type="checkbox"/>	1018329 32x1"		1	<input type="checkbox"/>
	1095724 40/140	<input type="checkbox"/>		1018314 40+50+63/140	1	<input type="checkbox"/>	1018330 40x1 1/2"		1	<input type="checkbox"/>
	1095725 50/140	<input type="checkbox"/>		1018314 40+50+63/140	1	<input type="checkbox"/>	1018331 50x1 1/2"		1	<input type="checkbox"/>
	1095726 63/140	<input type="checkbox"/>		1018314 40+50+63/140	1	<input type="checkbox"/>	1018332 63x2"		1	<input type="checkbox"/>
	1095727 75/175	<input type="checkbox"/>		1018312 63+75/175	1	<input type="checkbox"/>	1018333 75x2"		1	<input type="checkbox"/>
	1095728 90/175	<input type="checkbox"/>		1018311 90+110/175	1	<input type="checkbox"/>	1018334 90x3"		1	<input type="checkbox"/>
	1095729 110/200	<input type="checkbox"/>		1018310 75+90+110/200	1	<input type="checkbox"/>	1018335 110x3"		1	<input type="checkbox"/>

Please note: All items sold individually unless specified

Contact us on 01923 927000 – enquiries.uk@uponor.com | 95

Uponor Ecoflex Pre-insulated Pipe

Ecoflex Thermo Mini & Single



Ecoflex Single pipe PEX, max. 6 bar / 80°C LTHW. **Use Wipex 6 bar coupling.**

Description	Code	Qty*	Price per M
25/68 Mini	1018132	200	33.69
32/68 Mini	1018133	200	39.04
25/140 Single	1018109	200	47.44
32/140 Single	1018110	200	51.54
40/175 Single	1018111	200	67.60
50/175 Single	1018112	200	72.36
63/175 Single	1018113	200	82.00
75/200 Single	1018114	100	111.71
90/200 Single	1018115	100	125.67
110/200 Single	1018116	100	149.66

Ecoflex Thermo Twin



Ecoflex Twin pipe PEX, max. 6 bar / 80°C LTHW. **Use Wipex 6 bar coupling.**

Description	Code	Qty*	Price per M
2x25/175	1018134	200	65.03
2x32/175	1018135	200	73.94
2x40/175	1018136	200	79.73
2x50/200	1018137	100	108.94
2x63/200	1018138	100	131.50

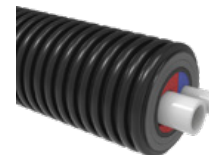
Ecoflex VIP Thermo Single



Thermo VIP Single is suitable for applications where heat loss needs to be at a minimum, but with all the benefits of the existing Thermo system. Other jacket sizes available on request. **Use Wipex 6 bar Coupling.**

Description	Code	Qty*	Price per M
40/140	1095714	150	87.09
50/140	1095715	150	96.60
63/140	1095716	100	122.36
75/140	1095717	100	144.99
90/140	1095718	100	155.65
110/175	1095719	100	177.56
125/200	1095720	100	239.17

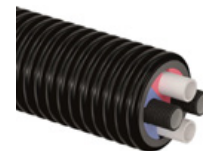
Ecoflex VIP Thermo Twin



Thermo VIP Twin is suitable for applications where heat loss needs to be at a minimum, but with all the benefits of the existing Thermo system. Other jacket sizes available on request. **Use Wipex 6 bar Coupling.**

Description	Code	Qty*	Price per M
2x25/140	1118580	150	86.77
2x32/140	1118581	150	99.59
2x40/175	1118582	100	118.04
2x50/175	1118583	100	149.23
2x63/200	1118584	100	173.68
2x75/250	1118585	100	260.15

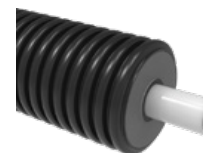
Ecoflex Thermo HP Twin



Ecoflex HP is a specialist pipe designed for connecting an ASHP outdoor unit to the indoor unit. This includes twin PEXa pipe and 32mm double walled conduit for carrying power, sensor cables and heating service in one neat pipe. **Use Wipex 6 bar coupling.**

Description	Code	Qty*	Price per M
2x32mm+2x32mm/140	1093894	200	56.94
2x40mm+2x32mm/175	1093895	200	69.51

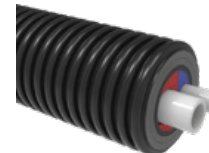
Ecoflex VIP Aqua Single



Ecoflex VIP Aqua Single pipe PEX, max. 10 bar / 70°C DHW. **Use Wipex 10 bar coupling.**

Description	Code	Qty*	Price per M
40/140	1119047	200	96.03
50/140	1119048	200	114.28
63/140	1119049	200	132.18
75/140	1119050	100	185.76
90/175	1119051	100	207.00
110/175	1119052	100	246.92

Ecoflex VIP Aqua Twin



Ecoflex VIP Aqua Twin pipe PEX, max. 10 bar / 70°C DHW. **Use Wipex 10 bar coupling.**

Description	Code	Qty*	Price per M
25+20/140	1119053	200	76.72
32+20/140	1119054	200	85.71
40+25/175	1119055	200	113.14
50+32/175	1119056	200	131.37

*Pipe available in our cut to length service. *Availability upon request.

Contact us on 01923 927000 – enquiries.uk@uponor.com | 97

Uponor Ecoflex Pre-insulated Pipe

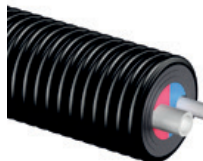
Ecoflex Aqua Single



Ecoflex Single pipe PEX, max. 10 bar / 70°C DHW. Use Wipex 10 bar coupling.

Description	Code	Qty*	Price per M
25/140	1018117	200	54.41
32/140	1018118	200	60.64
40/175	1018119	200	80.50
50/175	1018120	200	94.56
63/175	1018121	200	108.94
75/200*	1018122	100	134.14
90/200*	1018123	100	144.44
110/200*	1036036	100	177.04

Ecoflex Aqua Twin



Ecoflex Twin pipe PEX, max. 10 bar / 70°C DHW. Use Wipex 10 bar coupling.

Description	Code	Qty*	Price per M
25+25/175	1018139	200	77.33
32+25/175	1018140	200	81.91
40+25/175	1018141	200	89.48
50+25/175	1018142	200	101.48

Ecoflex Quattro



Ecoflex Quattro pipe PEX, 10 bar / 70°C DHW and 6 bar / 80°C LTHW. (Contains 2 x Thermo Pipes and 2 x Aqua Pipes).

Description	Code	Qty*	Price per M
2x25/25+25/175	1018147	200	110.36
2x32/25+25/175	1018148	200	121.16
2x32/32+25/175	1018149	200	126.69

Ecoflex Supra



Ecoflex single pipe PE-HD, max. 16 bar / 20°C. For chilled water and potable water. Use Plasson coupling or Wipex 6 bar coupling.

Description	Code	Qty*	Price per M
25/68	1095722	200	29.54
32/68	1095723	200	31.41
40/140	1095724	200	66.08
50/140	1095725	200	69.41
63/140	1095726	200	75.45
75/175	1095727	100	80.71
90/175	1095728	100	77.01
110/200	1095729	100	106.12

Ecoflex Supra PLUS



Ecoflex single pipe PE-HD, max. 16 bar / 20°C, complete with frost protection cable. For chilled water and potable water. Use Plasson coupling or Wipex 6 bar coupling. Please add 1 metre of extra pipe to allow for electrical connection.

Description	Code	Qty*	Price per M
25/68	1095730	150	59.08
32/68	1095731	150	60.04
40/140	1095734	150	94.29
50/140	1095736	150	97.59
63/140	1095737	150	103.59
75/175	1095738	100	110.14
90/175	1095739	100	112.97
110/200	1095740	100	144.37

Ecoflex rubber end-cap set



Description	Code	Qty	Price each
Twin 75+90/250	1088979	1	83.88
Twin 40+50+63/200	1018307	1	67.59
Twin 25+32+50/175	1018308	1	66.00
Twin 25+32+40/175	1018309	1	59.85
Twin 25+32/140	1018245	1	62.85
Twin 20+25+32/140	1119374	1	54.09

Description	Code	Qty	Price each
Quattro	1018306	1	64.33
Thermo HP 32mm	1086838	1	46.79
Thermo HP 40mm	1094252	1	49.88

Ecoflex rubber end-cap set



Description	Code	Qty	Price each
125/250	1083869	1	90.98
75+90+110/200	1018310	1	66.93
90+110/175	1018311	1	84.32
63+75/175	1018312	1	61.49
50+63/200	1086685	1	74.51
32+40+50/175	1018313	1	61.49
40+50+63/140	1018314	1	51.22
25+32/140	1018315	1	48.08
25+32/68	1018316	1	37.91
63+75+90/140	1095801	1	65.79
125/200	1067757	1	86.88

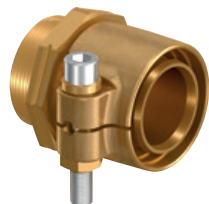
*Pipe available in our cut to length service. *Availability upon request.

Contact us on 01923 927000 – enquiries.uk@uponor.com | 99

Uponor Wipex Fittings



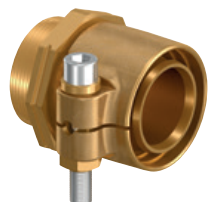
Wipex male coupling, PN6



Used with all Ecoflex piping systems. Compression fitting with male thread connections.

Description	Code	Qty	Price each
25x1"	1018328	1	32.18
32x1"	1018329	1	35.38
40x1 1/4"	1018330	1	46.46
50x1 1/4"	1018331	1	62.42
63x2"	1018332	1	106.31
75x2"	1018333	1	147.54
90x3"	1018334	1	211.15
110x3"	1018335	1	262.89
125x4"	1078368	1	464.62

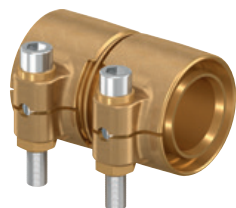
Wipex male coupling, PN10



Used with all Ecoflex piping systems. Compression fitting with male thread connections.

Description	Code	Qty	Price each
25x1"	1018336	1	33.42
32x1"	1018338	1	37.42
40x1 1/4"	1018339	1	46.52
50x1 1/4"	1018340	1	64.66
63x2"	1018341	1	101.84
75x2"	1018342	1	135.53
90x3"	1018343	1	193.94
110x3"	1023170	1	239.18

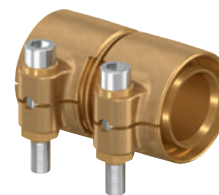
Wipex jointing equal PN6



Single fitting for joining two lengths of Ecoflex together.

Description	Code	Qty	Price each
25mm	1042972	1	45.80
32mm	1042973	1	56.59
40mm	1042980	1	72.94
50mm	1042984	1	110.18
63mm	1042981	1	180.65
75mm	1042985	1	269.17
90mm	1042986	1	370.82
110mm	1042987	1	515.80
125mm	1078365	1	597.61

Wipex jointing equal PN10



Single fitting for joining two lengths of Ecoflex together.

Description	Code	Qty	Price each
25mm	1042970	1	45.34
32mm	1042974	1	58.36
40mm	1042979	1	73.02
50mm	1042983	1	110.69
63mm	1042982	1	178.87

Wipex T-piece



Used with all Ecoflex piping systems.

Description	Code	Qty	Price each
1"	1018345	1	33.88
1 1/4"	1018346	1	38.43
2"	1018347	1	78.04
3"	1018348	1	181.01
4" *	1078367	1	204.75

Wipex 90° bend



Used with all Ecoflex piping systems.

Description	Code	Qty	Price each
1"	1018350	1	28.65
1 1/4"	1018351	1	35.84
2"	1018352	1	85.07
3"	1018353	1	156.91
4" *	1078366	1	195.95

Wipex joint



Used with all Ecoflex piping systems.

Description	Code	Qty	Price each
1"	1018355	1	19.49
1 1/4"	1018356	1	27.30
2"	1018357	1	49.18
3"	1018358	1	70.97

*Please note all 4" joints require sealant tape to be applied

Uponor Wipex Fittings

Wipex flange



Used with all Ecoflex piping systems.

Description	Bolt Circle	Bolt Holes	Code	Qty	Price each
1"	85	4	1018359	1	77.15
1 1/4"	100	4	1018360	1	121.82
2"	125	4	1018362	1	223.46
3"	160	8	1018364	1	268.20
4" *	100	8	1078370	1	293.89

Wipex reducer



Used with all Ecoflex piping systems.

Description	Code	Qty	Price each
1 1/4"x1"	1018368	1	22.17
1 1/2"x1 1/4"	1018369	1	25.91
2"x1"	1018371	1	62.02
2"x1 1/4"	1018372	1	51.41
3"x1"	1018374	1	109.33
3"x1 1/4"	1018375	1	92.90
3"x2"	1018376	1	98.15
4"x3" *	1078369	1	159.09

Wipex swivel union



For connecting Wipex bodies together when installed in a chamber or H insulation set.

Description	Code	Qty	Price each
1"x1"	1045455	1	61.60
1 1/4"x 1"	1045456	1	67.05
1 1/4"x 1 1/4"	1045457	1	72.79
2"x 1 1/4"	1045458	1	79.63
2"x 2"	1045459	1	93.78
3"x 2"	1045460	1	153.65
3"x 3"	1045461	1	171.81

*Please note all 4" joints require sealant tape to be applied

Ecoflex Pipe Accessories

Ecoflex elbow insulation set



For sealing elbow connections of Single, Twin and Quattro pipes in the trench. Comprises of insulating half-shells, stainless steel bolts and sealant. Only to be used with Uponor rubber end caps.

Description	Code	Qty	Price each
200/175/140	1060985	1	477.27

Ecoflex 'T' insulation set



For sealing T-connections of Single, Twin and Quattro pipes in the trench. Comprises of insulating half-shells, stainless steel bolts and sealant. Only to be used with Uponor rubber end caps.

Description	Code	Qty	Price each
140/90/68	1060986	1	483.52
200/175/140	1060982	1	554.37

Ecoflex 'H' insulation set



For sealing connections of single main lines (flow and return) to twin outlet lines in the trench. Comprises of insulating half-shells, stainless steel screws, plastic dowels and sealant. Only to be used with Uponor rubber end caps.

Description	Code	Qty	Price each
ONE SIZE	1007355	1	899.45

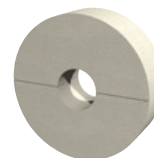
Ecoflex straight insulation



For sealing straight connections of Single and Twin pipes in the trench. Comprises of insulating half-shells, stainless steel bolts and sealant. Only to be used with Uponor rubber end caps.

Description	Code	Qty	Price each
200/175/140	1060984	1	409.61

Ecoflex reducer ring

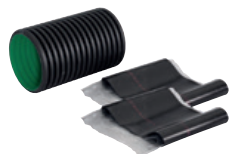


Used with 25mm and 32mm Ecoflex Thermo Mini and Supra pipes when connecting into insulation sets.

Description	Code	Qty	Price each
200/68	1060991	1	40.33

Ecoflex Pre-insulated Pipe Fittings, Components & Accessories

Ecoflex jacket joint set



For sealing the jacket when connecting pipes together or when connecting to pre-insulated steel fittings. Contains two heat shrink sleeves.

Jacket Size	Sleeve Size	Code	Qty	Price each
200	250	1084574	1	152.55
250	315	1083872	1	160.64

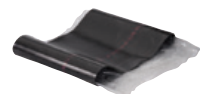
Ecoflex chamber with lid



Designed to accommodate pipe connections which cannot be made with an Uponor T-insulation set, e.g. for connecting Uponor Single to Twin pipes or for Uponor Quattro pipelines. Size 980 (d) x 685 (h) x 1660 (l), 50kg.

Description	Code	Qty	Price each
6x140/175/200	1018326	1	1679.11
8x140/175/200	1018327	1	1892.94
2x250 – 6x140/175/200	1084576	1	2002.10
4x250 – 4x140/175/200	1084577	1	2762.64
6x250 – 2x140/175/200	1084578	1	3523.17

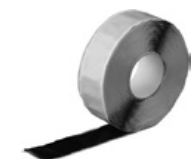
Ecoflex shrinkable sleeve for chamber



For sealing jacket pipe in the Uponor chamber outlet.

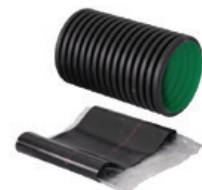
Description	Code	Qty	Price each
175/200mm	1018380	1	49.69
250mm	1084575	1	71.96

Ecoflex sealing tape for chamber



Description	Code	Qty	Price each
50mm x 10m	1018382	1 roll	104.95

Ecoflex entry sleeve NPW (Non-pressure, waterproof)



With heat-shrinkable sleeve. Can be used wherever there is no pressurised water. Non-pressure, waterproof.

Jacket Size	Sleeve Size	Code	Qty	Price each
68	110	1018267	1	63.18
140 & 145	175	1018269	1	69.22
175 & 200	250	1018268	1	83.50
250	315	1083871	1	111.77

Wipex RS Adapter range



For use with Ecoflex Thermo piping systems. Allows connection to the Uponor Modular Riser System - see pages 37-39.

Description	Code	Qty	Price each
63 x 5,8	1047013	1	110.06
75 x 6,8	1047014	1	126.18
90 x 8,2	1047015	1	211.50
110 x 10,0	1047016	1	220.67

Ecoflex trench warning tape



To mark the position of buried pipes. Red, tear-proof plastic tape imprinted with 'Uponor' and symbols for trench identification.

Description	Code	Qty	Price each
Warning tape roll 250m	1018385	1	46.08

Ecoflex repair tape



Shrinkable tape used for sealing damaged outer jacket. Self adhesive layer to make application easier.

Description	Code	Qty	Price each
160mm x 10m	1093120	1	247.00

Ecoflex cable Joiners



Used for jointing the Uponor Supra Plus cable in tees and other joints.

Description	Code	Qty	Price each
Termination, Straight and elbow joint	1042310	1 set	91.26
Tee Joint	1042311	1 set	217.41

Ecoflex Supra PLUS connection set



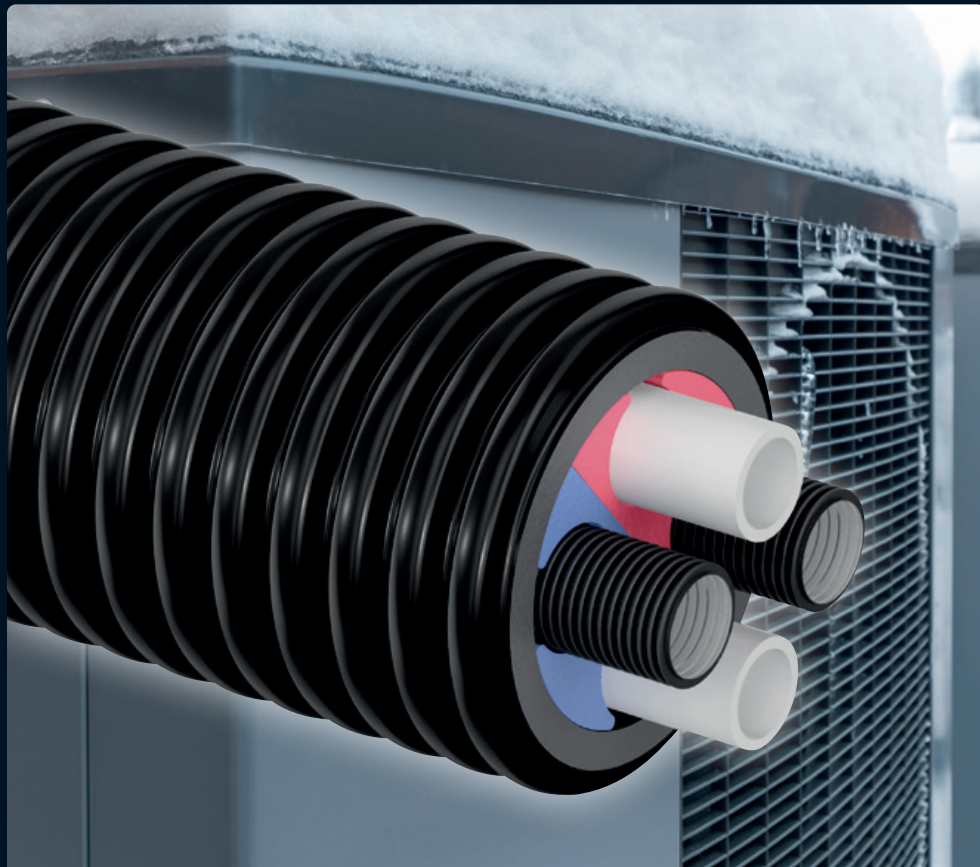
Set includes Supra Plus control unit, 2 rubber end caps, 5m sensor cable, fixing screws, cable connections and full instructions. Control unit requires 230V supply.

Description	Code	Qty	Price each
25+32/68	NEW 1120124	1	370.86
40+50+63/140	NEW 1120126	1	427.87
75/175	NEW 1120127	1	427.87
110/200	NEW 1120128	1	442.87

Build on Uponor Ecoflex Thermo Twin Heat Pump

Uponor have developed a new heating service pipework with two additional conduits, that allows for cables to come from the main dwelling to the heat pump. This solution is ideal for outbuildings.

www.uponor.co.uk



uponor

Moving
➤ Forward

General Tools & Accessories

Plumbing

Tools and Accessories	108
Q&E Tools and Accessories	112

Underfloor Heating

Tools and accessories	113
-----------------------	-----



uponor

Moving
➤ Forward

Plumbing – Tools & Accessories

Multilayer pipe cutting tool



Pipe cutting pliers for Uponor Multilayer pipes diameter 12 - 25mm

Description	Code	Qty	Price each
Pipe cutting pliers 12-25mm	1089674	1	35.56
Spare blades for cutting pliers	1089776	1	11.03

Multilayer pipe cutting tool



Pipe cutting pliers for Uponor Multilayer pipes diameter 32 - 40mm

Description	Code	Qty	Price each
Pipe cutter 12-40mm	1089677	1	37.28
Spare cutting blade	1089779	1	14.82

Multilayer pipe cutting tool



Cutting tool for use with Uponor Multilayer pipes

Description	Code	Qty	Price each
Pipe cutting tool 25-63mm	1089675	1	46.09
Spare cutting disc	1089777	1	5.24
Pipe cutting tool 50-110mm	1089676	1	86.10
Spare cutting disc	1089778	1	7.42

Multilayer pipe bevelling tool



Installation tool for the bevelling of Uponor Multilayer. Supplied with turning handle (can also be used as cordless screwdriver attachment, see instructions).

Description	Code	Qty	Price each
12mm	1015837	1	17.26
14mm	1006952	1	17.25
16mm	1006830	1	14.33
20mm	1015749	1	14.87
25mm	1015756	1	17.10

Multilayer pipe bevelling tool



Installation tool for the bevelling of Uponor Multilayer. Supplied with turning handle (can also be used as cordless screwdriver attachment, see instructions).

Description	Code	Qty	Price each
32mm	1015762	1	23.56
40mm	1006638	1	35.14
50mm	1015808	1	39.96
63mm	1014339	1	49.17
75mm	1014344	1	64.62

Multilayer pipe 3-size bevelling tool



Installation tool for the bevelling of Uponor composite pipes.

Description	Code	Qty	Price each
16/20/25mm	1015739	1	18.35

Universal deburring tool



For deburring all Uponor composite and PEX pipes.

Description	Code	Qty	Price each
All sizes	1060167	1	16.25

Multilayer pipe inside bending spring



Bending spring for use with Uponor composite pipes.

Description	Code	Qty	Price each
14mm	1013727	1	3.34
16mm	1013729	1	3.34
20mm	1013734	1	3.78
25mm	1013737	1	5.65
32mm	1013739	1	6.98

Multilayer pipe outside bending spring



Bending spring for use with Uponor composite pipes.

Description	Code	Qty	Price each
16mm	1006640	1	4.73
20mm	1013792	1	5.23
25mm	1013794	1	6.04

Multilayer pipe bending tool 16-32mm



Bending tool for producing series of identical curves in Uponor composite pipes 16-32mm

Description	Code	Qty	Price each
SAC Uni-pipe PLUS	1071925	1	255.88

Press battery pressing tool UP110



Supplied in carrying case, complete with battery and charger unit. Range of application: 16-110mm.

Description	Code	Qty	Price each
Press tool	1083612	1	1336.49
Spare battery 12V/3Ah	1083608	1	107.86
Battery charger	1083610	1	104.15

Plumbing – Tools & Accessories

Pressing jaws (UP110)



Jaws for use with Uponor press fittings, to be used with UP110. **UPP1 Jaw Profile.**

Description	Code	Qty	Price each
14mm	1007083	1	87.69
16mm	1007084	1	87.69
20mm	1007086	1	87.69
25mm	1007087	1	91.55
32mm	1007088	1	91.55
40mm	1015768	1	142.01
50mm	1015792	1	151.37

Pressing chain (UP110)



Pressing chain for use with 63-110mm Uponor Press Fittings, to be used in conjunction with UP110 pressing tool and base pressing unit. **UPP1 Jaw Profile**

Description	Code	Qty	Price each
63mm pressing chain	1046541	1	609.95
75mm pressing chain	1046542	1	619.86
90mm pressing chain	1046543	1	801.68
110mm pressing chain	1046544	1	867.88

Base pressing unit (UP110)



Description	Code	Qty	Price each
63-110mm base pressing unit	1046545	1	240.77

Mini 32 Battery Pressing Tool



An alternative to the existing UP110 battery pressing tool, the Mini 32 can press all existing metal and composite press fittings from 12mm up to 32mm.

Description	Code	Qty	Price each
Press Tool (excl. jaw sets)	1083674	1	1078.80
Spare battery 18 V / 1.5 Ah, Li-Ion (27 Wh)	1083605	1	102.81
Spare re-charging unit	1083610	1	104.15

Mini 32 jaw set



To be used with Mini 32 – KSP0 Jaw Profile.

Description	Code	Qty	Price each
14mm	1007090	1	107.59
16mm	1007091	1	107.59
20mm	1007093	1	107.59
25mm	1007094	1	114.56
32mm	1007095	1	114.56

Manual pressing tool



For use with Uponor MLC & SAC 16-20mm press fittings (in conjunction with inserts for manual pressing tool). Supplied in carrying case without inserts for pressing tool.

Description	Code	Qty	Price each
16-20mm	1015764	1	277.39

Press Inserts for manual pressing tool



For fitting to the manual pressing tool, which handles 16-20mm Uponor MLC & SAC press fittings.

Description	Code	Qty	Price each
16mm	1015777	1	55.80
20mm	1015780	1	55.80

Multilayer pipe pressure test plug



Reusable plug with ½" FT for pressure-testing of Uponor MLC & SAC installations.

Description	Code	Qty	Price each
14mm	1013754	20	4.18
16mm	1013756	20	2.97
20mm	1013760	20	3.10
25mm	1013762	20	3.20
32mm	1013764	10	7.18
40mm	1013765	5	18.83

Pressure test plug spare O-rings



Description	Code	Qty	Price each
14mm	1013798	10	0.10
16mm	1013799	10	0.17
20mm	1013801	10	0.20
25mm	1013802	10	0.22
32mm	1013803	10	0.44
40mm	1013804	10	0.43

Wipex pliers



Used for easier opening of the Wipex sleeve.

Description	Code	Qty	Price each
Wipex pliers	1046407	1	24.62

NEW – Uponor Q&E M12 Fuel expander tool

Uponor are proud to launch the new Milwaukee M12 Fuel expander tool. With a new brushless motor and redesigned metal gears, the new tool will expand a connection 20% faster than the standard M12 tool, and is now capable of making connections on all pipes up to 32mm.



- ✓ Brushless motor
- ✓ 20% faster expansion
- ✓ Suitable for expanding pipes up to 32mm.

uponor

Moving
Forward

Plumbing – Q&E PEX Tools & Accessories

Q&E M12 Milwaukee expander tool set



Includes 1x 230V, 50Hz fast battery charger, 2x 12V / 2.0Ah Li-ion batteries, 1x 100g tube of Molykote tool lubricant, 1x operation manual, 1x lightweight plastic case. Expander heads included: 16 rapid seal/20/25mm.

Description	Code	Qty	Price each
M12 Expander tool Set	1119377	1	416.15
M12 battery 4.0Ah	1061185	1	106.42

Q&E M12 Fuel Milwaukee expander tool



The new M12 Fuel tool with Milwaukee brushless technology. For even faster connections, up to 20% faster than the standard M12 tool. Includes 1x M12 Fuel tool (no expander heads), 1x lightweight plastic case and 1x operation manual.

Description	Code	Qty	Price each
M12 Fuel expander tool	NEW 1121157	1	209.95

Q&E M18 Milwaukee expander tool set



Includes 1x 230V, 50Hz fast battery charger, 2x 18V / 2.0Ah Li-ion batteries, 1x 50g tube of Molykote tool lubricant, 1x operation manual, 1x lightweight plastic case. Expander heads included: 16/20/25/32mm.

Description	Code	Qty	Price each
M18 Expander tool Set	1095324	1	800.43

Q&E Rapid Seal expander heads



Rapid seal technology to make connections up to 60% faster 'time to tight' even in cold weather conditions.

Description	Compatibility	Code	Qty	Price each
9.9mm head	M12/M12 Fuel/M18	NEW 1119380	1	51.79
*12mm head	M12/M12 Fuel/M18	NEW 1057171	1	51.79
16mm head	M12/M12 Fuel/M18	NEW 1119381	1	51.79
20mm head	M12/M12 Fuel/M18	NEW 1119382	1	51.79
25mm head	M12/M12 Fuel/M18	NEW 1119384	1	51.79
32mm head	M12 Fuel/M18	NEW 1119386	1	54.81

***Not Rapid Seal technology**

Q&E M18 VLD Milwaukee expander tool



Uponor Q&E M18 VLD Milwaukee Expansion Tool PEX 40-63, side handle, 2x 18V Li-ion 5.0Ah battery packs, M12 – M18 charger, 150g expansion cone grease, 1x operation manual, 1x lightweight plastic case.

***Expander heads not included, to be purchased separately.**

Description	Code	Qty	Price each
M18 VLD Expander tool	1085099	1	1874.28
*40mm head	1085095	1	326.40
*50mm head	1085096	1	326.40
*63mm head	1085097	1	326.40

Contact us on 01923 927000 – enquiries.uk@uponor.com | 113

UFH – Tools & Accessories

Q&E Graphite paste



For use with Q&E expander tools.

Description	Code	Qty	Price each
30g tube	1008334	1	6.52

PEX Plastic pipe cutters



Cost effective PEX pipe cutters to leave the perfect jointing finish.

Description	Code	Qty	Price each
Pipe cutter 12-25mm	1089673	1	20.02

Pipe and conduit cutter



This tool is specially designed for cutting pipe-in-conduit. Conduit cutter is guarded to prevent damage to the pipe inside the conduit. Maximum pipe diameter 25mm.

Description	Code	Qty	Price each
Cutter	1089674	1	35.56
Spare blade	1089776	1	11.03

Tacker kombi gun



For all Uponor pipe from 16mm to 20mm (multi-layer composite pipe and cross-linked polyethylene pipe) to all common UK insulation boards. For use with Kombi Klips 1086529 and 1086530.

Description	Code	Qty	Price each
Kombi Gun	1119039	1	186.86

Uponor tape



Wide tape for sealed joining of Uponor insulation products.
Roll width: 50mm
Roll Length: 66m

Description	Code	Qty	Price each
Width 50mm x Length 66m	1000012	1 roll	6.64

Uponor tape dispenser



For taping of insulation sections and edges.
For use with tape 1000012

Description	Code	Qty	Price each
Tape dispenser	1000142	1 pce	38.21

UFH – Tools & Accessories

Pipe de-coiler



Suitable for both evalPEX and MLC pipes. Includes coil retention arms and de-coiling eyelet. Can be used for all diameters up to 25mm.

Description	Code	Qty	Price each
De-coiler	1058662	1 set	304.35

MLC Pipe straightener



For the fast, simple, straight alignment of Uponor MLC supplied in coils (16mm to 32mm). Adjustable to the desired size. Can be used in combination with the Uponor MLC uncoilers.

Description	Code	Qty	Price each
Pipe straightener	1010512	1	260.54

Approvals & Accreditations



Uponor's Product Identification

As part of the requirements from the water regulators, products must be easily identifiable as being supplied by a particular manufacturer.

Uponor uses a range of common product markings:



uponor

Moving
Forward

Interpretation

In these conditions-Buyer: means the company, firm, body or person buying the Goods and/or services or whose order for the Goods and/or Services is accepted by the Supplier;

Conditions means the terms and conditions set out in this document and include any special terms and conditions agreed in writing between the Buyer and the Supplier; any special terms shall prevail;

Contract means the contract for the sale of the Goods and/or Services to be provided by the Supplier pursuant to the Contract;

Goods mean the goods the Supplier agrees to supply; Services means the Services the Supplier agrees to supply;

Supplier means Uponor Limited or any other Uponor Group Company Writing includes fax, e-mail and other comparable means of communication

1.2 Any reference in these conditions to any provision of a statute shall be construed as a reference to that provision as amended, re-enacted or extended at the relevant time.

1.3 Any reference to any English legal concept or term shall, where relevant, be deemed to apply to the nearest analogous concept or term in any other jurisdiction.

2 Basis of the Sale

2.1 The Supplier shall sell the Goods and/or Services in accordance with any written quotation of the Supplier which is accepted by the Buyer or written order of the Buyer which is accepted by the Supplier, subject in either case to these Conditions, which shall govern the Contract to the exclusion of any other terms and conditions.

2.2 No variation to these Conditions shall be binding unless agreed in Writing by an authorised representative (Director / Company Secretary) of the Supplier.

2.3 Any typographical, clerical or other error or omission in any sales literature, quotation, price list, acceptance of offer, invoice or other document or information issued by the Supplier shall be subject to correction without any liability on the part of the Supplier.

3 Orders and Specifications

3.1 No order submitted by the Buyer is accepted by the Supplier unless confirmed in Writing by the Supplier's authorised representative or delivery of the Goods and/or Services by the Supplier.

3.2 The Buyer is responsible for ensuring the accuracy of the terms of any order (including any applicable specification) and for giving the Supplier any necessary information relating to the Goods and/or Services within a sufficient time to enable the Supplier to perform the Contract in accordance with its terms.

3.3 The quantity, quality and description of and any specification for the Goods and/or Services are those set out in the Supplier's quotation or the Buyer's order (to the extent accepted by the Supplier).

3.4 If the Goods are to be manufactured or any process is to be applied to the Goods by the Supplier in accordance with a specification submitted by the Buyer, the Buyer shall indemnify the Supplier against all loss, damages, costs and expenses incurred by the Supplier in connection with any claim for infringement of any patent, copyright, design, trade mark or other intellectual property rights. The Supplier gives no warranty that any Goods based on the specification of the Buyer will be fit for their intended purpose.

3.5 The Supplier may make any changes in the specification of the Goods and/or Services which are required to conform to any applicable statutory or EC requirements or which do not materially affect their quality or performance.

3.6 No order which has been accepted by the Supplier may be cancelled by the Buyer, except with the agreement in Writing of the Supplier and on terms that the Buyer indemnifies the Supplier in full against all loss (including loss of profit), costs (including the cost of all labour and materials used), damages, charges and expenses incurred by the Supplier as a result of cancellation.

3.7 All drawings, designs, specifications and other information provided by the Supplier are confidential and all rights of copyright ownership and other intellectual property rights in respect of them shall remain vested in the Supplier and shall not pass to the Buyer.

4 Price of Goods

4.1 The price of the Goods and/or Services shall be the price specified on the Supplier's confirmation of order or, if none, the price specified in the Supplier's quotation or, if none, the Supplier's published price list current at the date of supply of the Goods and/or Services shall apply.

4.2 The Supplier may vary the price of the Goods and/or Services at any time before delivery to reflect any change in the cost to the Supplier which is due to any factor beyond the control of the Supplier (including, without limitation, foreign exchange fluctuation, currency regulation, increase in the costs of labour, materials or other costs of manufacture), any change in delivery dates, quantities or specifications for the Goods and/or Services at

which is requested by the Buyer, or any delay caused by any instructions of the Buyer or failure of the Buyer to give the Supplier adequate information or instructions.

4.3 All prices are given by the Supplier on an ex works basis and exclude VAT and other duties and the Buyer shall be liable to pay those duties and (subject to condition 6.6) the Supplier's charges for transport, packaging and insurance.

4.4 The Supplier may sue the Buyer for the price of the Goods, notwithstanding that title to them has not passed to the Buyer.

5 Terms of Payment

5.1 The Supplier may invoice the Buyer at any time for the price of the Goods and/or Services or part of it and, without limitation, may invoice the Buyer in respect of any instalment of an order. Unless the Supplier specifies otherwise (in writing), the Buyer shall pay the invoice (in full without any set off, deduction or counterclaim) within 30 days of the end of the calendar month in which the invoice is dated. Time of payment of the price shall be of the essence of the Contract.

5.2 If the Buyer fails to make any payment by the due date or the Supplier has reasonable grounds for believing that the Buyer will not make any payment then, without prejudice to any other right or remedy available to the Supplier, the Supplier may cancel the Contract or suspend any further deliveries to the Buyer.

5.3 If the Buyer fails to make any payment on the due date then without prejudice to any other right or remedy available to the Company the Company shall be entitled to charge the Buyer interest (both before and after any judgment) on the amount unpaid at the rate of 8% per annum above Bank of England base rate from time to time until payment is made (a part of a month being treated as a full month for the purpose of calculating interest).

6 Delivery, Returns and Performance

6.1 Unless otherwise agreed in writing by the parties, delivery of the Goods shall be made by the Supplier "ex works" as that term is defined in "Incoterms" - the international rules for the interpretation of trade terms of the International Chamber of Commerce sales dated 2000. A cost for delivery will be provided by the supplier to the buyer in each and every instance.

6.2 Any dates quoted for delivery of the Goods and/or Services are approximate only, and the Supplier shall not be liable for any delay in delivery of the Goods and/or Services.

6.3 If the Buyer fails to take delivery of the Goods or fails to give the Supplier adequate delivery instructions then, without prejudice to any other right or remedy available to the Supplier, the Supplier may store the Goods until actual delivery and charge the Buyer for the reasonable costs (including insurance) of storage and/or sell the Goods at the best price readily obtainable and (after deducting all reasonable storage or selling expenses) account to the Buyer for the excess over the price under the Contract or charge the Buyer for any shortfall below the price under the Contract.

6.4 The Buyer shall comply with all laws governing the importation of the Goods into the country of destination.

6.5 Minimum individual order value to include free delivery is >£500.00 net (or currency equivalent & excluding VAT). Please contact the supplier for any orders below this value for delivery costs. This term excludes Ecoflex pipe systems (see item 6.9 below) and any other items not included within our price guide.

6.6 Delivery of the goods that are requested direct to site or another third party address, will be subject to additional surcharges over and above delivery costs.

6.7 Where a next day service is required, customers should contact the supplier for a delivery charge quotation for each and every order.

6.8 For deliveries of Ecoflex pipe systems, no returns are allowed and the buyer needs to request a delivery cost from the supplier for each and every order.

6.9 Retention to title: Goods remain the property of Uponor Limited until paid for in full. Any query regarding this delivery should be notified in writing to Uponor Limited within 3 working days of receipt of the goods. As signed for proof of delivery (from whomever signs) will be deemed as acceptance of the goods as listed and in good condition.

6.10 No returns will be allowed without prior approval from the supplier.

6.11 All prices are based on ex-works Worcester, UK and delivery costs will be additional to prices quoted.

7. Risk and Property

7.1 Risk of damage to or loss of the Goods shall pass to the Buyer at the time of delivery or, if the Buyer wrongfully fails to take delivery the time when the Supplier has tendered delivery of the Goods. The Buyer should insure the Goods accordingly.

7.2 Notwithstanding delivery and the passing of risk in the Goods, or any other provision of these Conditions, the property in the Goods shall not pass to the Buyer until the Supplier has received in cash or cleared funds payment in full of the price of the Goods and all other goods and services agreed to be sold by the Supplier to the Buyer for which payment is then due.

7.3 Until such time as the property in the Goods passes to the Buyer, the

The Supplier may invoice the Buyer at any time for the price of the Goods and/or Services or part of it and, without limitation, may invoice the Buyer in respect of any instalment of an order. Unless the Supplier specifies otherwise (in writing), the Buyer shall pay the invoice (in full without any set off, deduction or counterclaim) within 30 days of the end of the calendar month in which the invoice is dated. Time of payment of the price shall be of the essence of the Contract.

5.2 If the Buyer fails to make any payment by the due date or the Supplier has reasonable grounds for believing that the Buyer will not make any payment then, without prejudice to any other right or remedy available to the Supplier, the Supplier may cancel the Contract or suspend any further deliveries to the Buyer.

5.3 If the Buyer fails to make any payment on the due date then without prejudice to any other right or remedy available to the Company the Company shall be entitled to charge the Buyer interest (both before and after any judgment) on the amount unpaid at the rate of 8% per annum above Bank of England base rate from time to time until payment is made (a part of a month being treated as a full month for the purpose of calculating interest).

6 Delivery, Returns and Performance

6.1 Unless otherwise agreed in writing by the parties, delivery of the Goods shall be made by the Supplier "ex works" as that term is defined in "Incoterms" - the international rules for the interpretation of trade terms of the International Chamber of Commerce sales dated 2000. A cost for delivery will be provided by the supplier to the buyer in each and every instance.

6.2 Any dates quoted for delivery of the Goods and/or Services are approximate only, and the Supplier shall not be liable for any delay in delivery of the Goods and/or Services.

6.3 If the Buyer fails to take delivery of the Goods or fails to give the Supplier adequate delivery instructions then, without prejudice to any other right or remedy available to the Supplier, the Supplier may store the Goods until actual delivery and charge the Buyer for the reasonable costs (including insurance) of storage and/or sell the Goods at the best price readily obtainable and (after deducting all reasonable storage and selling expenses) account to the Buyer for the excess over the price under the Contract or charge the Buyer for any shortfall below the price under the Contract.

6.4 The Buyer shall comply with all laws governing the importation of the Goods into the country of destination.

6.5 Minimum individual order value to include free delivery is >£500.00 net (or currency equivalent & excluding VAT). Please contact the supplier for any orders below this value for delivery costs. This term excludes Ecoflex pipe systems (see item 6.9 below) and any other items not included within our price guide.

6.6 Delivery of the goods that are requested direct to site or another third party address, will be subject to additional surcharges over and above delivery costs.

6.7 Where a next day service is required, customers should contact the supplier for a delivery charge quotation for each and every order.

6.8 For deliveries of Ecoflex pipe systems, no returns are allowed and the buyer needs to request a delivery cost from the supplier for each and every order.

6.9 Retention to title: Goods remain the property of Uponor Limited until paid for in full. Any query regarding this delivery should be notified in writing to Uponor Limited within 3 working days of receipt of the goods. As signed for proof of delivery (from whomever signs) will be deemed as acceptance of the goods as listed and in good condition.

6.10 No returns will be allowed without prior approval from the supplier.

6.11 All prices are based on ex-works Worcester, UK and delivery costs will be additional to prices quoted.

7. Risk and Property

7.1 Risk of damage to or loss of the Goods shall pass to the Buyer at the time of delivery or, if the Buyer wrongfully fails to take delivery the time when the Supplier has tendered delivery of the Goods. The Buyer should insure the Goods accordingly.

7.2 Notwithstanding delivery and the passing of risk in the Goods, or any other provision of these Conditions, the property in the Goods shall not pass to the Buyer until the Supplier has received in cash or cleared funds payment in full of the price of the Goods and all other goods and services agreed to be sold by the Supplier to the Buyer for which payment is then due.

7.3 Until such time as the property in the Goods passes to the Buyer, the

Unless otherwise agreed in writing by the parties, delivery of the Goods shall be made by the Supplier "ex works" as that term is defined in "Incoterms" - the international rules for the interpretation of trade terms of the International Chamber of Commerce sales dated 2000. A cost for delivery will be provided by the supplier to the buyer in each and every instance.

Any dates quoted for delivery of the Goods and/or Services are approximate only, and the Supplier shall not be liable for any delay in delivery of the Goods and/or Services.

If the Buyer fails to take delivery of the Goods or fails to give the Supplier adequate delivery instructions then, without prejudice to any other right or remedy available to the Supplier, the Supplier may store the Goods until actual delivery and charge the Buyer for the reasonable costs (including insurance) of storage and/or sell the Goods at the best price readily obtainable and (after deducting all reasonable storage and selling expenses) account to the Buyer for the excess over the price under the Contract or charge the Buyer for any shortfall below the price under the Contract.

The Buyer shall comply with all laws governing the importation of the Goods into the country of destination.

Minimum individual order value to include free delivery is >£500.00 net (or currency equivalent & excluding VAT). Please contact the supplier for any orders below this value for delivery costs. This term excludes Ecoflex pipe systems (see item 6.9 below) and any other items not included within our price guide.

Delivery of the goods that are requested direct to site or another third party address, will be subject to additional surcharges over and above delivery costs.

Where a next day service is required, customers should contact the supplier for a delivery charge quotation for each and every order.

For deliveries of Ecoflex pipe systems, no returns are allowed and the buyer needs to request a delivery cost from the supplier for each and every order.

Retention to title: Goods remain the property of Uponor Limited until paid for in full. Any query regarding this delivery should be notified in writing to Uponor Limited within 3 working days of receipt of the goods. As signed for proof of delivery (from whomever signs) will be deemed as acceptance of the goods as listed and in good condition.

No returns will be allowed without prior approval from the supplier.

All prices are based on ex-works Worcester, UK and delivery costs will be additional to prices quoted.

7. Risk and Property

Risk of damage to or loss of the Goods shall pass to the Buyer at the time of delivery or, if the Buyer wrongfully fails to take delivery the time when the Supplier has tendered delivery of the Goods. The Buyer should insure the Goods accordingly.

Notwithstanding delivery and the passing of risk in the Goods, or any other provision of these Conditions, the property in the Goods shall not pass to the Buyer until the Supplier has received in cash or cleared funds payment in full of the price of the Goods and all other goods and services agreed to be sold by the Supplier to the Buyer for which payment is then due.

Until such time as the property in the Goods passes to the Buyer, the

7.1 Risk of damage to or loss of the Goods shall pass to the Buyer at the time of delivery or, if the Buyer wrongfully fails to take delivery the time when the Supplier has tendered delivery of the Goods. The Buyer should insure the Goods accordingly.

7.2 Notwithstanding delivery and the passing of risk in the Goods, or any other provision of these Conditions, the property in the Goods shall not pass to the Buyer until the Supplier has received in cash or cleared funds payment in full of the price of the Goods and all other goods and services agreed to be sold by the Supplier to the Buyer for which payment is then due.

7.3 Until such time as the property in the Goods passes to the Buyer, the

7. Until such time as the property in the Goods passes to the Buyer, the Supplier may at any time require the Buyer to deliver up the Goods to the Supplier and, if the Buyer fails to do so forthwith, enter upon any premises of the Buyer or any third party where the Goods are stored and repossess the Goods.

8. Warranties and Liability

Warranties

8.1 Subject to the conditions set out below, the Supplier warrants that the Goods will correspond with their specification at the time of delivery and will be free from defects in material and workmanship for a period of 12 months from purchase (with accompanying proof of purchase).

8.2 This warranty is given by the Supplier subject to the following conditions:

8.2.1 The Supplier shall be under no liability in respect of any defect arising from any drawing, design or specification supplied by the Buyer;

8.2.2 The Supplier shall be under no liability in respect of any defect arising from fair wear and tear, wilful damage, negligence, abnormal working conditions, failure to follow the Supplier's instructions (whether oral or in Writing), misuse or alteration or repair of the Goods without the Supplier's approval;

8.2.3 This warranty does not extend to parts, materials or equipment not manufactured by the Supplier, in respect of which the Buyer shall only be entitled to the benefit of any such warranty or guarantee as is given by the manufacturer to the Supplier.

8.3 Subject as expressly provided in these Conditions, all warranties, conditions or other terms implied by statute or common law are excluded to the fullest extent permitted by law. Without limitation, the Supplier does not warrant the accuracy or otherwise of any design, drawing, specification, instructions, other information or advice that it provides as part of the Services and/or as ancillary information in relation to the Goods.

8.4 Any claim by the Buyer which is based on any defect in the quality or condition of the Goods or their failure to correspond with specification shall be notified in writing to the Supplier within 7 days of delivery or (where the defect or failure was not apparent on reasonable inspection) within a reasonable time after discovery of the defect or failure, but, in any event, within 12 months of purchase (with accompanying proof of purchase). If delivery is not refused, and the Buyer does not notify the Supplier accordingly, the Buyer may not reject the Goods and the Supplier shall have no liability and the Buyer shall pay the price as if the Goods had been delivered in accordance with the Contract.

8.5 Where any valid claim is made in accordance with this Clause 8, the Supplier may replace or repair the Goods (or the part in question) or re-supply the Services (or the part in question) free of charge or, at the Supplier's sole discretion, refund to the Buyer the price of the Goods or Services (or part of it), but the Supplier shall have no further liability to the Buyer.

General Liability

8.6 Notwithstanding anything else in this Contract, neither party's liability in respect of death or personal injury caused by that party's negligence shall be limited.

8.7 The Supplier shall not be liable to the Buyer for loss of contracts, profits, anticipated savings, revenue, business, stoppage to other work or indirect or consequential loss (whether caused by the negligence of the Supplier's employees or agents or otherwise) in connection with this Contract.

8.8 Notwithstanding any other provision in the Contract except Condition 8.5, the entire liability of the Supplier under or in connection with the Contract shall not exceed the sum paid to the Supplier by the Buyer for the Goods or the Services (or both, where both Goods and Services are to be supplied) which are the subject of the claim in question by the Buyer.

8.9 The Supplier shall not be liable for any breach of its obligations to the extent that the Supplier is prevented or hindered from complying with them by "Force Majeure".

8.10 "Force Majeure" means any cause beyond the reasonable control of the Supplier including (without limitation) strikes, lock-outs, labour.

9. Insolvency of Buyer

9.1 Without prejudice to any other right or remedy available to the Supplier, the Supplier may cancel the Contract or suspend any further deliveries without any liability to the Buyer, if:

9.1.1 the Buyer is unable to pay its debts, makes any voluntary arrangement with its creditors or (being an individual or firm) becomes bankrupt or (being a company) becomes subject to an administration order or goes into liquidation; or

9.1.2 an encumbrancer takes possession, or a receiver is appointed, of any of the property or assets of the Buyer; or

9.1.3 the Buyer ceases, or threatens to cease, to carry on business; or

9.1.4 the Supplier reasonably believes that any of the foregoing events is about to occur in relation to the Buyer and notifies the Buyer accordingly.

Warranties

8.1 Subject to the conditions set out below, the Supplier warrants that the Goods will correspond with their specification at the time of delivery and will be free from defects in material and workmanship for a period of 12 months from purchase (with accompanying proof of purchase).

8.2 This warranty is given by the Supplier subject to the following conditions:

8.2.1 the Supplier shall be under no liability in respect of any defect arising from any drawing, design or specification supplied by the Buyer;

8.2.2 the Supplier shall be under no liability in respect of any defect arising from fair wear and tear, wilful damage, negligence, abnormal working conditions, failure to follow the Supplier's instructions (whether oral or in Writing), misuse or alteration or repair of the Goods without the Supplier's approval;

8.2.3 this warranty does not extend to parts, materials or equipment not manufactured by the Supplier, in respect of which the Buyer shall only be entitled to the benefit of any such warranty or guarantee as is given by the manufacturer to the Supplier.

8.3 Subject as expressly provided in these Conditions, all warranties, conditions or other terms implied by statute or common law are excluded to the fullest extent permitted by law. Without limitation, the Supplier does not warrant the accuracy or otherwise of any design, drawing, specification, instructions, other information or advice that it provides as part of the Services and/or as ancillary information in relation to the Goods.

8.4 Any claim by the Buyer which is based on any defect in the quality or condition of the Goods or their failure to correspond with specification shall be notified in writing to the Supplier within 7 days of delivery or (where the defect or failure was not apparent on reasonable inspection within a reasonable time after discovery of the defect or failure, but, in any event, within 12 months of purchase (with accompanying proof of purchase)). If delivery is not refused, and the Buyer does not notify the Supplier accordingly, the Buyer may not reject the Goods and the Supplier shall have no liability and the Buyer shall pay the price as if the Goods had been delivered in accordance with the Contract.

8.5 Where any valid claim is made in accordance with this Clause 8, the Supplier may replace or repair the Goods (or the part in question) or re-supply the Services (or the part in question) free of charge or, at the Supplier's sole discretion, refund to the Buyer the price of the Goods or Services (or part of it), but the Supplier shall have no further liability to the Buyer.

General Liability

8.6 Notwithstanding anything else in this Contract, neither party's liability in respect of death or personal injury caused by that party's negligence shall be limited.

8.7 The Supplier shall not be liable to the Buyer for loss of contracts, profits, anticipated savings, revenue, business, stoppage to other work or indirect or consequential loss (whether caused by the negligence of the Supplier or its employees or agents or otherwise) in connection with this Contract.

8.8 Notwithstanding any other provision in the Contract except Condition 8.5, the entire liability of the Supplier under or in connection with this Contract shall not exceed the sum paid to the Supplier by the Buyer for the Goods or the Services (or both, where both Goods and Services are to be supplied) which are the subject of the claim in question by the Buyer.

8.9 The Supplier shall not be liable for any breach of its obligations to the extent that the Supplier is prevented or hindered from complying with them by "Force Majeure".

8.10 "Force Majeure" means any cause beyond the reasonable control of the Supplier including (without limitation) strikes, lock-outs, labour.

9. Insolvency of Buyer

9.1 Without prejudice to any other right or remedy available to the Supplier, the Supplier may cancel the Contract or suspend any further deliveries without any liability to the Buyer, if:

9.1.1 the Buyer is unable to pay its debts, makes any voluntary arrangement with its creditors or (being an individual or firm) becomes bankrupt or (being a company) becomes subject to an administration order or goes into liquidation; or

9.1.2 an encumbrancer takes possession, or a receiver is appointed, of any of the property or assets of the Buyer; or

9.1.3 the Buyer ceases, or threatens to cease, to carry on business; or

9.1.4 the Supplier reasonably believes that any of the foregoing events is about to occur in relation to the Buyer and notifies the Buyer accordingly.

9.1 Without prejudice to any other right or remedy available to the Supplier, the Supplier may cancel the Contract or suspend any further deliveries without any liability to the Buyer, if:

9.1.1 the Buyer is unable to pay its debts, makes any voluntary arrangement with its creditors or (being an individual or firm) becomes bankrupt or (being a company) becomes subject to an administration order or goes into liquidation; or

9.1.2 an embargement takes possession, or a receiver is appointed, of any of the property or assets of the Buyer; or

9.1.3 the Buyer ceases, or threatens to cease, to carry on business; or

9.1.4 the Supplier reasonably believes that any of the foregoing events is about to occur in relation to the Buyer and notifies the Buyer accordingly.

10. Non-standard Orders

10.1 Where the Buyer orders Goods or materials of a type, size or quality not normally produced by the Supplier or Services not normally performed by the Supplier, the Supplier shall use all reasonable endeavours to execute the order but, without prejudice to any other provision limiting the Supplier's liability, if it proves impossible, impracticable or uneconomical to carry out or complete the order, the Supplier may cancel the Contract or the uncompleted balance of it without penalty and the Buyer shall not be liable to pay for the part of it actually delivered or performed.

11. Export Sales

11.1 Subject to Condition 6.1, where Goods are sold on the basis of international trade terms, they shall be defined in accordance with "Incoterms" the international rules for the interpretation of trade terms of the International Chamber of Commerce sales dated 2000.

11.2 Where Goods are sold FOB, the Supplier shall not be required to give the Buyer the notice specified in Section 32(3) of the Sale of Goods Act 1979.

11.3 Unless otherwise agreed by the Supplier in Writing, the price of the Goods and/or Services shall be secured by an irrevocable letter of credit satisfactory to the Supplier and established by the Buyer in favour of the Supplier immediately upon receipt of the Supplier's confirmation of order form and confirmed by a United Kingdom bank acceptable to the Supplier. The letter of credit shall be for the price payable plus any duties and taxes payable to the Supplier and shall be valid for the longer of six months or any period estimated by the Supplier for delivery of the Goods and/or Services.

12. Packing

12.1 Unless otherwise agreed in Writing by the parties, the price specified by the Supplier excludes the cost of packing cases and packing materials, for which the Buyer shall be additionally liable. If the Supplier notifies the Buyer that packing cases and/or materials are returnable, then the full cost of these is payable by the Buyer if the Buyer does not return them in good condition to the Supplier either (at the Supplier's option) carriage paid or in the Supplier's vehicle within three (3) months of their delivery to the Buyer. Where not returnable, the Buyer will dispose of all packing in accordance with the regulations (whether statutory or otherwise) relating to the protection of the environment.

12.2 The Supplier shall use all reasonable endeavours to ensure, where necessary, the appropriateness of packing before despatch, but the Supplier shall not be liable for any damage to or loss of Goods between despatch from the Supplier and delivery in accordance with this Contract.

13. General

13.1 The Supplier may perform any of its obligations or exercise any of its rights under this Contract through any other member of its group.

13.2 The Buyer may not assign any of its rights or obligations or mortgage, charge (otherwise than by floating charge) any of its rights under this Agreement without the prior written consent of the Supplier.

13.3 Each party acknowledges that, in entering into this Contract, it does not do so on the basis of and does not rely on any representation, warranty or other provision except as expressly provided in this Contract and all conditions, warranties or other terms implied by statute or common law are excluded. This condition shall only apply to the extent permitted by law.

13.4 Any notice required or permitted to be given by either party to the other shall be in Writing addressed to that other party at its registered office or principal place of business or such other address as may at the relevant time have been notified pursuant to this provision to the party giving the notice.

13.5 No waiver by the Supplier of any breach of the Contract by the Buyer shall be considered as a waiver of any subsequent breach of the same or any other provision.

13.6 If any provision of the Contract is held by any competent authority in UK law to be invalid or unenforceable in whole or in part the validity of the other provisions of the Contract and the remainder of the provision in question shall not be affected.

13.7 A person who is not a party to the Contract has no rights under the Contracts (Rights of Third Parties) Act 1999 to enforce any term of the Contract.

13.8 The Contract shall be governed by and construed in accordance with the laws of England, and the parties submit to the non-exclusive jurisdiction of the English courts.

13.9 When supplied as B2B ENE the producer invokes regulation 9.2 and passes all WEEE obligations to the end user.

Uponor Limited ("Uponor") guarantees [to the original purchaser/customer] that pipes and fittings sold by it are free of defects in materials or manufacture under normal conditions of use for a period of 25 years and in case of electrical and mechanical products for 2 years from the date of installation. This guarantee only applies to the products stored, installed, tested and operated in accordance with the fitting instructions issued by Uponor and valid at the time the products were installed.

Where a claim is made during the guarantee period and products are proven to be defective in materials and/or manufacture at the time of delivery, Uponor will supply replacement products free of charge. This is the exclusive remedy under this guarantee.

Uponor disclaims any warranty or guarantee not expressly provided for herein, including any implied warranties of merchantability or fitness for a particular purpose. Uponor further disclaims any and all responsibility or liability for losses, damages and expenses, including special, direct, indirect, incidental and consequential damages, whether foreseeable or not, including without limitation any loss of time or use or any inconvenience arising from the ownership, installation or use of the products sold hereunder.

This guarantee does not affect the statutory rights of the consumer.

Copyright © Uponor (Uponor Limited.)

Reproduction of any part of this publication for any purpose is not permitted without the prior written permission of Uponor Limited.

The contents of this brochure are provided for guideline only, please consult our technical manuals for full up-to-date information.

Uponor reserves the right to alter specifications and operating parameters for all their Underfloor Heating and Plumbing & Heating Systems at any time as part of its policy of continuous product development.

Care has been taken to ensure that the information in this price guide is correct at the time of going to press. Uponor Limited reserve the right to alter prices and the details of designs and performance of products without notice. E&OE.

uponor

The Pavilion,
Blackmoor Lane,
Watford,
Hertfordshire,
WD18 8GA

T 01923 927000
F 01923 223760
E enquiries.uk@uponor.com
W www.uponor.co.uk

02/2022

Moving ➤ Forward