

## Media Release

Frankfurt/Main, 17 March 2025

### **GF Building Flow Solutions: driving synergies across product categories for value-adding water flow solutions**

**The construction industry is accounting for a major part of the global CO<sub>2</sub> emissions. The need for clean and safe drinking water to serve a growing population is accelerating. GF Building Flow Solutions' mission is to solve these challenges: the increasing demand for energy-efficient and affordable buildings, inviting and safe homes as well as access to clean and safe drinking water. The portfolio comprises of safe solutions for hot- and cold-water supply and control, noise-reducing wastewater systems, energy-efficient heating and cooling, and multipurpose applications.**

GF Building Flow Solutions is Leading with Water, unleashing water's great potential as a resource to make buildings better, facilitate progress and enable our customers to be more productive and sustainable. "Combining the best of the industry-leading brands GF and Uponor, based on trusted Swiss, Finnish and German quality under one umbrella, customers get access to the broadest technology platform for a wide range of applications," says Charlotta Persfell, Chief Marketing Officer, GF Building Flow Solutions.

#### **Complete water solutions supplier**

The new GF Building Flow Solutions' portfolio creates synergies and value-adding solutions. The recently launched ChlorFIT in the U.S., a product within in the GF portfolio, delivers in combination with Uponor AquaPEX a full system for hot and cold water supply in commercial buildings. Connecting Uponor S-Press PLUS adapters with high-quality JRG valves makes installation fast and reliable.

Additionally, GF Building Flow Solutions now offers broad acoustic and standard solutions for wastewater and in house drainage. "With our new product category wastewater, we are not only bringing the water in, but also out of the building", says Charlotta Persfell. "The wastewater portfolio has been in GF for a long time, mainly sold in Turkey. After the integration, our teams have developed the facility into a Center of Excellence for wastewater. We are proud to bring the result of these efforts into the European market."

#### **The wastewater product range:**

- Acoustic house drainage: GF Silenta Premium, GF Silenta 3A and Uponor Decibel – combining fire resistance & acoustic properties
- Standard house drainage: solution for one family houses or floor drainage in PVC-U or halogen free PP material with a specific product range for the different markets
- Drain Inlet: sleek linear shower inlets ensure safe water drainage in spas, homes or sports facilities, with compact point drain options
- Air-Admittance Valves: prevent suction in sewage pipes, eliminating the release of unpleasant odors in sewage systems

#### **From residential to commercial buildings, from cottage to stadium**

"Whether it's a private villa or a large office complex, we aim to ensure efficiency, comfort, and sustainability," says Charlotta Persfell. "In Villa Neureuther, our underfloor heating creates a cozy, energy-efficient home. At the Alltours headquarters, our Thermatop M radiant cooling provides year-round performance with minimal energy use. "Our solutions are designed with a purpose. The cottage in Finland stays warm and efficient with underfloor heating, while the stadium Toyota Park in Chicago relies on our snow and ice melting system to keep the field safe year-round," says Charlotta Persfell.

#### **Hot & Cold Water Supply:**

##### **Supplying the right system for every project.**

"With two-digit number of product lines and several fitting and connection technologies, installers will find what they need. Our combination of GF and Uponor portfolio, product support, and expertise helps customers to efficiently plan and execute their projects. To overcome labor shortages and avoid increased material costs, the drinking water portfolio provides several prefabricated, ready-to-install



products. We are proud to present water connections for experts, such as S-Press, Sanipex, and Instaflex under one roof,” says Charlotta Persfell.

### **Hot & Cold Water Controls**

#### **Enabling safe, hygienic, and precise water control based on Swiss Quality**

Based on Swiss quality, the JRG valves are known best-in-class when it comes to pressure and temperature management as well as installation integrity. “Our manual valves are built on experience and excellence over decades and serve as a solid foundation for new developments for intelligent and automated technologies, such as our new Hycleen Balance for automated hydraulic balancing,” says Charlotta Persfell.

### **Heating & Cooling Solutions:**

#### **Maximizing energy savings and sustainability while ensuring comfort**

GF Building Flow Solutions range of systems is designed to provide comfort for various buildings throughout seasons. New energy directives and decarbonization goals require efficient energy usage in both new and existing buildings. To meet these requirements, we have accelerated our focus towards intelligent, automated, and prefabricated systems. “Our innovations include Uponor Siccus 16, a direct tiling radiant system for renovation, AI-powered control software, and a new generation of Uponor Ecoflex VIP pipes,” says Charlotta Persfell.

### **Multipurpose Applications**

#### **Cast iron fittings and fire suppression systems for different needs**

“The iconic plus in the GF logo dates back to the shape of the malleable fitting born in 1864,” says Charlotta Persfell. “Since then, additional multipurpose fittings have completed the portfolio, which we now as GF Building Flow Solutions proudly serve more customers across regions with.”

**Further information about the portfolio and individual products: [www.uponor.com](http://www.uponor.com)**

**GF Building Flow Solutions @ ISH 2025  
Leading with Water**

Visit us:  
Booth E07, hall 4.0  
Frankfurt/Main, 17 – 21 March 2025

### **Media contact:**

Beatrix Pfundstein  
Manager Global PR & Communications  
GF Building Flow Solutions  
[beatrix.pfundstein@uponor.com](mailto:beatrix.pfundstein@uponor.com)  
+49 (0)69 795386015

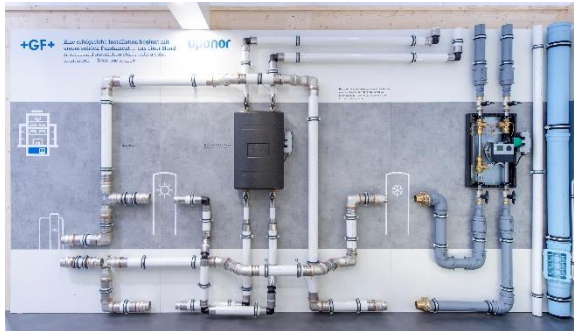
### **About GF Building Flow Solutions – Leading with Water**

With the construction industry accounting for a major part of the global CO2 emissions, and the need for clean and safe drinking water to serve a growing population, GF Building Flow Solutions’ mission is to solve the challenges of our time: the increasing demand for energy-efficient and affordable buildings, inviting and safe homes as well as access to clean and safe drinking water. GF Building Flow Solutions is Leading with Water, unleashing water’s great potential as a resource to make buildings better, facilitate progress and enable our customers to be more productive and sustainable, ensuring comfort, health, and efficiency. Combining the best of the industry-leading brands GF, Uponor, and JRG, based on trusted Swiss, Finnish and German quality under one umbrella, customers get access to the broadest technology platform for a wide range of applications, ensuring customer satisfaction and performance. The portfolio comprises of safe solutions for hot- and cold-water supply and control, noise-reducing wastewater systems, as well as energy-efficient heating and cooling. A division of GF, GF Building Flow Solutions – formerly known as Uponor (Uponor Inc. in the U.S., Uponor Ltd. in Canada) and GF Building Technology – has sales companies in 30 countries and production sites in 12 locations across Europe and the Americas.

#LeadingwithWater  
[www.georgfischer.com](http://www.georgfischer.com)  
[www.uponor.com](http://www.uponor.com)

## Pictures

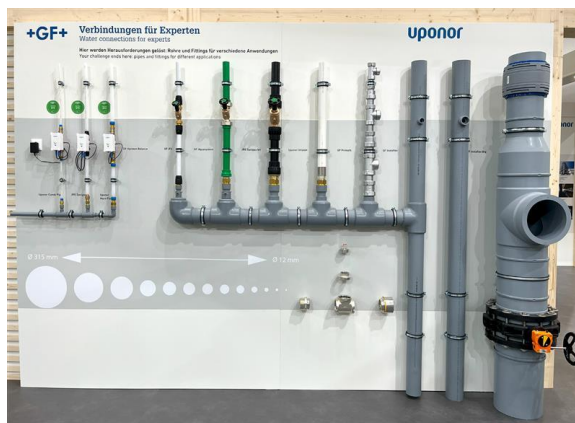
Reprint free of charge // please note the copyright information //  
please provide copy of magazine or a link to the online publication



**GF\_BFS\_Portfolio\_Boiler\_Room.jpg**

GF Building Flow Solutions' portfolio comprises of safe solutions for hot- and cold-water supply and control, noise-reducing wastewater systems, energy-efficient heating and cooling, and multipurpose applications. The picture shows the example of a boiler room installation in an apartment building or hotel.

Source: GF Building Flow Solutions



**GF\_BFS\_Portfolio\_Multifamily\_Home.jpg**

Hot & Cold Water Supply: the right system for every project. With a two-digit number of product lines and several fitting and connection technologies, installers will find what they need. The picture shows the example installation with the complete portfolio from decentralized hot water supply to wastewater systems.

Source: GF Building Flow Solutions



**GF\_BFS\_Portfolio\_Radiant\_Heating\_Cooling.jpg**

Heating & Cooling Solutions: maximizing energy savings and sustainability while ensuring comfort. GF Building Flow Solutions range of systems is designed to provide comfort for various building types throughout all seasons.

Source: GF Building Flow Solutions