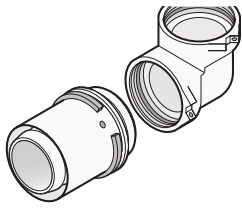




Riser System



Uponor RS



Uponor RS is a unique system that follows a modular design principle for riser systems and other distribution lines. Just 40 system components enable hundreds of variations, making the system highly adaptable.

Your benefits

- Innovative plug connection between body and adapter
- Fast and flexible: tool-free assembly, many variations
- More efficient stock management
- Re-adjustment possible until final installation
- Colour coding 16 -110mm for easy dimension selection



Specification

- with fixed press sleeve
- stop ring
- colour code
- Test safety

Application

- Tap water: The permanent operating temperature ranges from 0°C to 70°C at a maximum permanent operating pressure of 10 bar. The short-term malfunction temperature is 95°C for a period of 100 hours in the operating life time.
- Heating: The permanent operating temperature ranges up to 80°C at a maximum permanent operating pressure of 10 bar. The short-term malfunction temperature is 100°C for a period of 100 hours in the operating life time.

if not different mentioned:

- Male and female threads acc.to EN 10226-1.

Certification

- WaterMark Certified to AS 4176.2:2010 Multilayer pipes for pressure application Part 2: Multilayer piping Systems for hot and cold water plumbing applications- Pipes (ISO 21003-2:2008, MOD)
- AS 4176.3:2010 Multilayer pipes for pressure applications Part 3: Multilayer piping systems for hot and cold water plumbing applications—Fittings (ISO 21003-3:2008, MOD)

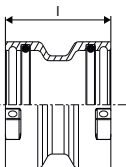


Uponor RS coupling

- Made of tin-plated brass
- Base part for all RS2 or RS3 inserts including 2 lock pins.



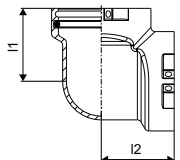
Item no.	Dimension	l mm	Qty 2	Qty 1	UOM
1029144	RS2-RS2	58	480	1	pce
1029145	RS3-RS3	58	480	1	pce



Uponor RS

Uponor RS elbow

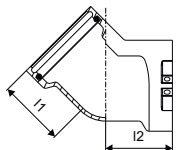
- Made of tin-plated brass
- Base part for all RS2 or RS3 inserts including 2 lock pins.



Item no.	Dimension	I1 mm	I2 mm	Qty 2	Qty 1	UOM
1029138	RS2-RS2	51	51	336	1	pce
1029139	RS3-RS3	68	68	240	1	pce

Uponor RS elbow 45

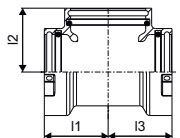
- Made of tin-plated brass
- Base part for all RS2 or RS3 inserts including 2 lock pins.



Item no.	Dimension	I1 mm	I2 mm	Qty 2	Qty 1	UOM
1029140	RS2-RS2	51	51	336	1	pce
1029141	RS3-RS3	68	68	175	1	pce

Uponor RS tee

- Made of tin-plated brass
- Base part for all RS2 or RS3 inserts including 3 lock pins.

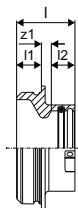


Item no.	Dimension	I1 mm	I2 mm	I3 mm	Qty 2	Qty 1	UOM
1029142	RS2-RS2-RS2	51	51	51	336	1	pce
1029143	RS3-RS3-RS3	68	68	68	175	1	pce

Uponor RS

Uponor RS reducer

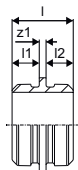
- Made of tin-plated brass
- Reducer from RS3 to RS2 including 1 lock pin.



Item no.	Dimension	l mm	l1 mm	l2 mm	z1 mm	Qty 2	Qty 1	UOM
1029146	RS3-RS2	47	20	19	8	480	1	pce

Uponor RS spacer

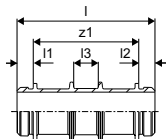
- Made of tin plated-brass
- Spacer to connect RS base parts of equal dimensions.



Item no.	Dimension	l mm	l1 mm	l2 mm	z1 mm	Qty 2	Qty 1	UOM
1046750	RS2-RS2 l=5mm	45	20	20	5	480	1	pce
1046751*	RS3-RS3 l=5mm	45	20	20	5	240	1	pce

Uponor RS spacer

- Made of tin-plated brass
- Spacer to connect RS base parts of equal dimensions e.g to create T-manifold or shift in distribution lines.

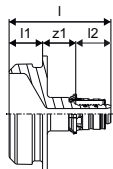


Item no.	Dimension	l mm	l1 mm	l2 mm	l3 mm	z1 mm	Qty 2	Qty 1	UOM
1046477*	RS2-RS2 l=130mm	170	20	20	30	130	240	1	pce
1046478*	RS3-RS3 l=210mm	250	20	20	30	210	96	1	pce

Uponor RS

Uponor RS adapter S-Press

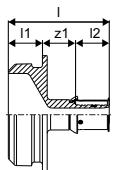
- Made of tin-plated brass
- Fits to all RS2 base parts.



Item no.	Dimension	l mm	l1 mm	l2 mm	z1 mm	Qty 2	Qty 1	UOM
1059397	16-RS2	61	20	21	20	480	1	pce

Uponor RS adapter S-Press PLUS

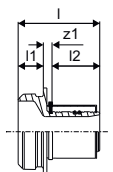
- tin plated
- made of DR material
- press without bevel



Item no.	Dimension	l mm	l1 mm	l2 mm	z1 mm	Qty 2	Qty 1	UOM
1095818	20-RS2	61	20	21	20	378	1	pce
1095819	25-RS2	75	20	28	27	378	1	pce
1095820	32-RS2	75	20	28	27	378	1	pce

Uponor RS adapter S-Press

- Made of tin-plated brass
- Fits to all RS2 or RS3 base parts.

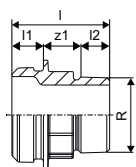


Item no.	Dimension	l mm	l1 mm	l2 mm	z1 mm	Qty 2	Qty 1	UOM
1046940	40-RS2	65	20	38	7	480	1	pce
1046941	50-RS2	65	20	38	7	480	1	pce
1029125	63-RS2	88	20	61	7	400	1	pce
1029126	75-RS2	88	20	61	7	400	1	pce
1029127	90-RS3	93	20	62	11	240	1	pce
1029128	110-RS3	93	20	62	11	240	1	pce

Uponor RS

Uponor RS adapter male thread

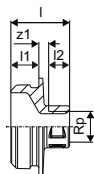
- Made of tin-plated brass
- Fits to all RS2 or RS3 base parts



Item no.	Dimension	l mm	l1 mm	l2 mm	R inch	z1 mm	Qty 2	Qty 1	UOM
1059402	R1 ½"MT-RS2	62	20	24	1 ½	18	480	1	pce
1029131	R2"MT-RS2	66	20	23	2	23	480	1	pce
1029132	R2 ½"MT-RS2	63	20	27	2 ½	16	480	1	pce
1029133	R3"MT-RS3	73	20	30	3	23	240	1	pce

Uponor RS adapter female thread

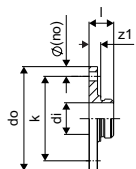
- Made of tin-plated brass.
- its to all RS2 or RS3 base parts



Item no.	Dimension	l mm	l1 mm	l2 mm	Rp inch	z1 mm	Qty 2	Qty 1	UOM
1059403	Rp½"FT-RS2	42	20	15	½	7	480	1	pce
1029134	Rp1"FT-RS2	45	20	19	1	6	480	1	pce
1029135	Rp2"FT-RS2	54	20	26	2	8	480	1	pce
1029136	Rp2 ½"FT-RS2	63	20	30	2 ½	12	480	1	pce
1059404	Rp½"FT-RS3	43	20	15	½	8	336	1	pce
1029137	Rp3"FT-RS3	65	20	33	3	12	240	1	pce

Uponor RS flange adapter

- Made of tin-plated brass
- Fits to all RS2 or RS3 base parts
- Flange PN6/PN16 acc. to EN 1092-3
- Bolt circle with 4/8 holes.



Item no.	Dimension	l mm	di mm	do mm	z1 mm	k mm	p bar	Qty 2	Qty 1	UOM
1059399*	RS2-DN65 (PN16)	45	48,7	185	25	145	16	90	1	pce
1029129*	RS3-DN80 (PN16)	45	78,1	200	25	160	16	90	1	pce
1029130	RS3-DN100 (PN16)	44	78,1	220	24	180	16	90	1	pce

Uponor RS lock pin

- made of plastic
- to lock the RS insert to the RS base part.



Item no.	Dimension	colour	Qty 2	Qty 1	UOM
1042921	RS2 black	black	5000	10	pce
1042922	RS3 grey	grey		10	pce

uponor

Uponor GmbH

P.O. Box 1641
97433 Hassfurt
Germany

Australia

T +49-(0)9521 690 0
F +49-(0)9521 690 750
E international@uponor.com

T +61 (0)7 3202 6831
M +61 (0)477 136 977
E international@uponor.com

08/2023



www.uponor.com