

uponor

# PRICE GUIDE

February 2021

Radiant heating and cooling,  
plumbing and district networks



# Build on Uponor solutions

Uponor provide innovative and reliable plumbing and heating solutions for all building types ranging from one bedroom apartments to large commercial properties. Our products are recognised the World over as being at the forefront of technology and manufacturing quality.

The Uponor ethos of offering 'complete solutions' means that we are often involved with the transportation of water from the point of supply right the way through to the point of consumption. Whether it's transporting energy around a district heating system, or providing the cleanest, most hygienic drinking water, Uponor always has the customer's needs at the heart of everything we do.



**Single family home**



**Multi storey residential**



**Hotels**



**Industrial**



**Commercial**



**Healthcare**

# Exclusively for Uponor installers – collect uPoints and get rewarded!



You have put your trust in us and our products. Now we would like to thank you – with our loyalty scheme, Uponor & more. Collect uPoints when buying selected Uponor products and exchange them for rewards.

It's so easy: [www.uponor-more.co.uk](http://www.uponor-more.co.uk)



## 1. Register

Register to join the scheme and enjoy the many advantages of Uponor & more!



## 2. Collect uPoints

uPoint vouchers are attached to the labels of many key Uponor products. Just enter/scan the unique voucher code number in the Uponor & more portal at [www.uponor-more.co.uk](http://www.uponor-more.co.uk) and fill up your uPoint account.



## 3. Choose rewards

Now for the best part of the Uponor & more scheme. Once you have collected enough uPoints, simply exchange them for fantastic rewards! Enjoy!



## Underfloor Heating & Cooling



Uponor offer a wide range of underfloor heating and cooling solutions for both commercial and domestic installations. Ideal for use with environmentally sound renewable technologies, our systems offer a high energy efficiency, whilst providing maximum comfort for the building occupants.

## Flexible Plumbing and Heating



Uponor's plumbing solutions are fast to install, flexible, hygienic and corrosion resistant. These solutions are designed for use in heating, cooling and drinking water applications.

## Ecoflex (Pre-insulated Pipe) System



With over 35 million metres installed worldwide, Uponor Ecoflex pipes have proven to be a highly economical and an energy efficient choice for the transportation of heating water and potable water.

# Contents

Uponor Overview	2
Uponor Loyalty Scheme - uPoints	3
<b>Sustainability</b>	<b>6</b>
<b>Plumbing, Heating &amp; Building Services</b>	<b>10</b>
Uponor MLC & SAC Plumbing System	12
RTM Fitting	14
MLC & SAC Composite & Metal S-Press Fittings	19
Riser System	37
Smart End Range	41
Q&E PEX Plumbing System	45
Manifolds, Adapters & Accessories	56
General Plumbing Accessories	59
<b>Electric Underfloor Heating</b>	<b>61</b>
Comfort E	63
<b>Underfloor Heating &amp; Cooling</b>	<b>67</b>
Uponor Pipe & Accessories	68
Uponor Systems	70
Uponor UFH & Cooling Manifolds & Water Temperature Controls	77
<b>Heating &amp; Cooling Room Controls</b>	<b>83</b>
<b>Ecoflex (Pre-insulated) Pipe</b>	<b>93</b>
Pipe & Tool Selector	94
Ecoflex Pipe	96
Uponor Wipex Fittings	100
Ecoflex Pipe Accessories	103
<b>General Tools and Accessories</b>	<b>107</b>
Project notes section	116
Uponor - Conditions of Sale	118

Heat  
Interface Units

Plumbing, Heating  
& Building Services

Electric  
Underfloor Heating

Underfloor  
Heating & Cooling

Heating & Cooling  
Room Controls

Ecoflex  
(Pre-insulated) Pipe

General Tools  
and Accessories



# uponor

## Committed to sustainability



# Uponor focuses on 4 out of the 17 United Nations' Sustainable Development Goals

The 2030 Agenda for Sustainable Development, adopted by all United Nations Member States in 2015, provides a shared blueprint for peace and prosperity for people and the planet, now and into the future. At its heart are the 17 *Sustainable Development Goals* (SDGs), which are an urgent call for action by all countries – developed and developing – in a global partnership.

These Development Goals are the blueprint for the essential task:

*How can we achieve a better and more sustainable future for humanity?*



Uponor takes all 17 Goals seriously and acts responsibly towards them, especially the four Sustainable Development Goals which are connected with, and embedded in, our daily operations.

We are confident that with our focus on innovation, our products, our production and our energy usage we can make a significant contribution to these Goals.

# Uponor continues to drive its sustainability agenda

Since its foundation, Uponor acts responsibly and produces resource-efficient products and solutions. Therefore we have always had **three central themes** in mind:

Scarcity of water



Circular economy and material efficiency

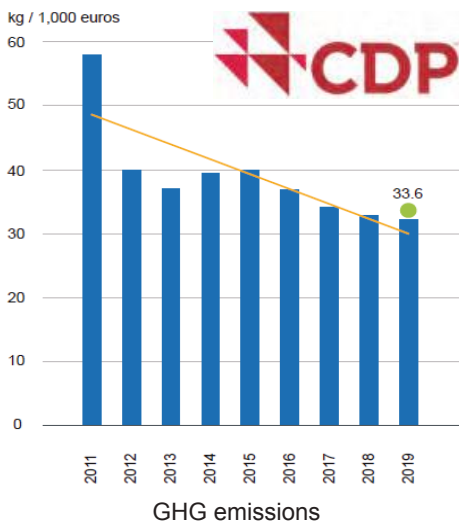


Climate change and strive for carbon neutrality



Increasing requirements for building and construction as well as tighter regulations call for rethinking how we use our resources more effectively, efficiently and responsibly.

As active members of the Worlds Green Building Council and 7 other national Green Building Councils, and also participants in the Carbon Disclosure Project (CDP), we aim to continually reduce our impact on the environment whilst working to enhance the positive effect that our products can have on the industry's drive towards achieving the Net Zero



Since 2020 all our European operations are using green electricity, thus avoiding 16,000 tons of CO2 emission per year.



Solar panels in our Nastola operations are producing 270,000kWh electricity per year.





# uponor

## We take responsibility

New packaging design:  
Same quality product –  
new ecologically friendly packaging



### Every little helps

- Natural brown cardboard instead of blue/white due to more environmentally friendly brown kraft liner paper
- Less CO<sub>2</sub> emissions during production of the boxes
- Less water consumption during production
- Easier to recycle after use





Uponor Plumbing

Uponor

For more information on our  
FREE plumbing installation  
training, please email  
[marketing.uk@uponor.com](mailto:marketing.uk@uponor.com)



# Plumbing, Heating & Building Services



We offer plumbing solutions that are corrosion resistant, hygienic, and flexible. They provide the construction industry with fast and efficient installation technologies, giving our clients a long-lasting, healthy and trouble-free solution.

• MLC & SAC Plumbing Pipes _____	12	• Smart End Range _____	41
• RTM Fitting _____	14	• Q&E Plumbing System	
• MLC & SAC Composite & Metal		• & Accessories _____	45
Press Fittings _____	18	• Manifold & Accessories _____	56
• Riser System _____	37	• General Plumbing Accessories _____	59

# Uponor Composite Pipes

## MLC (Uni-Pipe) & SAC (Uni-Pipe PLUS)



100% oxygen diffusion resistant composite pipes for use with heating water, chilled water and domestic services. For smaller pipe sizes, Uponor uses a unique construction technology to manufacture the pipe. SAC technology (Seamless Aluminium Composite) allows the pipe to be bent in a much tighter radius, and coiled pipes are even more flexible than the standard MLC

### Straight lengths



Description		Code	Qty	Price per/m
<b>3m lengths</b>				
16x2mm	<b>SAC</b>	<b>1060783</b>	75m	2.95
20x2.25mm	<b>SAC</b>	<b>1060784</b>	51m	4.85
25x2.5mm	<b>SAC</b>	<b>1060785</b>	30m	7.37
32x3mm	<b>SAC</b>	<b>1060786</b>	21m	9.23
<b>5m lengths</b>				
16x2mm	<b>SAC</b>	<b>1059572</b>	125m	2.95
20x2.25mm	<b>SAC</b>	<b>1059573</b>	85m	4.85
25x2.5mm	<b>SAC</b>	<b>1059574</b>	50m	7.37
32x3mm	<b>SAC</b>	<b>1059575</b>	35m	9.23
40x4mm	<b>MLC</b>	<b>1013446</b>	20m	15.15
50x4.5mm	<b>MLC</b>	<b>1013449</b>	20m	22.61
63x6mm	<b>MLC</b>	<b>1013451</b>	15m	36.55
75x7.5mm	<b>MLC</b>	<b>1013453</b>	5m	57.21
90x8.5mm	<b>MLC</b>	<b>1013455</b>	5m	84.58
110x10mm	<b>MLC</b>	<b>1013457</b>	5m	119.36

### Coils



Description		uPoints	Code	Qty	Price per/m
12x1.6mm	<b>MLC</b>		<b>1013575</b>	100m	2.17
14x2mm	<b>MLC</b>	850	<b>1013366</b>	200m	2.05
16x2mm	<b>SAC</b>	250	<b>1096008</b>	50m	2.23
16x2mm	<b>SAC</b>	500	<b>1059576</b>	100m	2.23
16x2mm	<b>SAC</b>	500	<b>1092653</b>	120m	2.23
16x2mm	<b>SAC</b>	900	<b>1059577</b>	200m	2.23
16x2mm	<b>SAC</b>	2500	<b>1059578</b>	500m	2.23
20x2.25mm	<b>SAC</b>	700	<b>1059579</b>	100m	3.96
25x2.5mm	<b>SAC</b>	800	<b>1059581</b>	50m	6.47
32x3mm	<b>SAC</b>	1000	<b>1059583</b>	50m	9.17

### MLC-Pipe in conduit



Coils of MLC in a protective, high density polyethylene tube.

Description		uPoints	Code	Qty	Price per/m
14mm	RED	500	<b>1013678</b>	75m	4.16
16mm	BLUE	500	<b>1013675</b>	75m	4.76
16mm	RED	500	<b>1063061</b>	75m	4.76
20mm	BLUE	800	<b>1013677</b>	75m	7.13
20mm	RED	800	<b>1013681</b>	75m	7.13

## MLC-Conduit (does not include MLC or SAC pipe)



Made of high density polyethylene for use with MLC or SAC coils.

Description	Use with pipe	Code	Qty	Price per/m
20mm RED	16mm	<b>1012858</b>	50m	1.28
20mm BLUE	16mm	<b>1012859</b>	50m	1.28
20mm BLACK	16mm	<b>1012860</b>	50m	1.28
23mm RED	20mm	<b>1012862</b>	50m	1.62
23mm BLUE	20mm	<b>1012863</b>	50m	1.62
23mm BLACK	20mm	<b>1012864</b>	50m	1.62
29mm RED	25mm	<b>1012866</b>	50m	2.36
29mm BLUE	25mm	<b>1012867</b>	50m	2.36
29mm BLACK	25mm	<b>1012869</b>	50m	2.36
36mm BLACK	32mm	<b>1012872</b>	25m	2.76

## MLC Pipe Pre-insulated S6 (6mm Insulation $\lambda$ 0.04 W/m\*K)




Fire classification E to BS EN 13501-1

Description	uPoints	Code	Qty	Price per/m
14x2mm RED	300 	<b>1013577</b>	50m	4.20

## MLC Pipe Pre-insulated S6 (6mm Insulation $\lambda$ 0.035 W/m\*K)




Fire classification E to BS EN 13501-1

Description	uPoints	Code	Qty	Price per/m
16x2mm BLUE	800 	<b>1063556</b>	75m	4.53
20x2.25mm BLUE	1000	<b>1063557</b>	75m	6.05
25x2.5mm BLUE	1100	<b>1063558</b>	50m	7.88

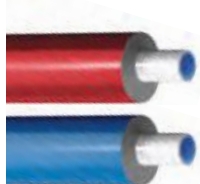
## MLC Pipe Pre-insulated S10 (10mm Insulation $\lambda$ 0.035 W/m\*K)



Fire classification E to BS EN 13501-1

Description	uPoints	Code	Qty	Price per/m
16x2mm BLUE	800 	<b>1062181</b>	75m	4.78
20x2.25mm BLUE	1000	<b>1062182</b>	75m	6.65
25x2.5mm BLUE	1100	<b>1062183</b>	50m	8.55

## MLC Pipe Pre-insulated (13mm Insulation $\lambda$ 0.04 W/m\*K)

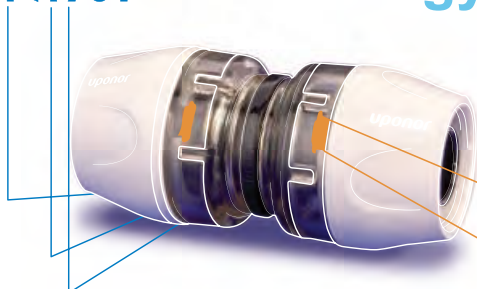


Fire classification BL-S2-D0 to BS EN 13501-1 (equivalent to British National Class 0).  
Fire resistance class accepted and referenced within The Building Regulations 2010,  
Fire Safety, Approved Document B.

Description	Code	Qty	Price per/m
16x2mm BLUE	<b>1093952</b>	75m	5.28
16x2mm RED	<b>1093953</b>	75m	5.28
20x2.25mm BLUE	<b>1093954</b>	75m	7.06
20x2.25mm RED	<b>1093955</b>	75m	7.06
25x2.5mm BLUE	<b>1094883</b>	50m	8.38



## RTM™ Technology



RTM is ideal for new build projects, renovation projects and system repairs. It's quick, safe, easy and both the audible and visual joint indicators give the installer 100% security.

Designed for use on Uponor MLC & SAC pipes, RTM is easy to install due to its revolutionary Tool-Inside technology. The Ring Tension Memory ensures perfect, long-lasting joints.



Ring Tension Memory Technology

**TOOL INSIDE**



Colour coded diameters

16

20

25

### RTM Coupling



Description	Code	Qty	Price each
16mm PPSU	<b>1048542</b>	10	4.89
20mm PPSU	<b>1048543</b>	10	6.18
25mm PPSU	<b>1048544</b>	5	9.47

### RTM Reducer



Description	Code	Qty	Price each
20mmx16mm PPSU	<b>1048545</b>	10	5.77
25mmx20mm PPSU	<b>1048546</b>	5	8.52

### RTM Elbow



Description	Code	Qty	Price each
16mm PPSU	<b>1048547</b>	10	5.00
20mm PPSU	<b>1048548</b>	10	6.72
25mm PPSU	<b>1048549</b>	5	11.27

## RTM Stop end



Description	Code	Qty	Price each
16mm	<b>1059013</b>	1	8.05

## RTM Elbow female thread



Description	Code	Qty	Price each
16mmx½" FT (PPSU)	<b>1048561</b>	10	8.76
16mmx½" FT (Brass)	<b>1048590</b>	10	10.27
20mmx½" FT (PPSU)	<b>1048562</b>	10	10.72
20mmx½" FT (Brass)	<b>1048591</b>	10	12.93
20mmx¾" FT (Brass)	<b>1048592</b>	10	13.79
25mmx¾" FT (PPSU)	<b>1048563</b>	5	14.98
25mmx¾" FT (Brass)	<b>1048593</b>	5	18.90
25mmx1" FT (Brass)	<b>1048594</b>	5	20.01

## RTM Elbow male thread



Description	Code	Qty	Price each
16mmx½" MT	<b>1048599</b>	10	10.72
20mmx½" MT	<b>1048600</b>	10	12.59
20mmx¾" MT	<b>1048601</b>	10	15.60
25mmx¾" MT	<b>1048602</b>	5	18.92

## RTM Elbow - Wall plate - female thread



Description	Code	Qty	Price each
16mmx½" FT Brass	<b>1048596</b>	1	11.17
20mmx½" FT Brass	<b>1048597</b>	1	11.17

## RTM Manifold adapter

For connecting MLC and SAC pipes to manifolds which use a Eurocone type connection



Description	Code	Qty	Price each
16mm G ¾" Eurocone	<b>1048604</b>	1	10.13
20mm G ¾" Eurocone	<b>1048605</b>	1	10.70

# Uponor RTM Fittings

## RTM Smart Aqua, U-tap elbow



For use with Smart End mounting brackets. See page 43.

Description	Code	Qty	Price each
16mmx $\frac{1}{2}$ " FT	1061621	5	40.97
20mmx $\frac{1}{2}$ " FT	1061622	5	60.25

## RTM Smart Aqua, U-tap elbow mixer



Description	Code	Qty	Price each
16mmx $\frac{1}{2}$ " MT	1062221	5	48.20

## RTM Equal tee



Description	Code	Qty	Price each
16mm PPSU	1048550	5	6.27
20mm PPSU	1048551	5	9.86
25mm PPSU	1048552	1	16.15

## RTM Reduced tee



Description	Code	Qty	Price each
1 2 3			
20mmx16mmx20mm PPSU	1048553	5	9.47
20mmx16mmx16mm PPSU	1048554	5	9.47
20mmx20mmx16mm PPSU	1048555	5	9.47
25mmx20mmx20mm PPSU	1048557	1	14.19
25mmx20mmx25mm PPSU	1048556	1	14.98

## RTM Female tee (brass)



Description	Code	Qty	Price each
16x $\frac{1}{2}$ " FTx16mm	1048587	1	16.54
20x $\frac{1}{2}$ " FTx20mm	1048588	1	19.31
20x $\frac{3}{4}$ " FTx20mm	1048589	1	21.66

## RTM Female adapter



Description	Code	Qty	Price each
16x½" FT (PPSU)	1048558	5	8.68
16x½" FT (Brass)	1048581	5	10.65
20x½" FT (PPSU)	1048559	5	9.93
20x½" FT (Brass)	1048582	5	12.00
20x¾" FT (Brass)	1048583	5	13.39
25x¾" FT (PPSU)	1048560	1	12.47
25x¾" FT (Brass)	1048584	1	16.54
25x1" FT (Brass)	1048585	1	18.92

## RTM Male adapter



Description	Code	Qty	Price each
16x½" MT (PPSU)	1048539	5	6.18
16x½" MT (Brass)	1048566	5	9.31
20x½" MT (PPSU)	1048540	5	7.41
20x½" MT (Brass)	1048567	5	11.03
20x¾" MT (Brass)	1048568	5	12.24
25x¾" MT (PPSU)	1048541	1	10.72
25x¾" MT (Brass)	1048569	1	15.76
25x1" MT (Brass)	1048570	1	18.29

## RTM Copper adapter



Description	Code	Qty	Price each
16/15mm	1048603	5	7.41
25/22mm	1057377	1	11.73

## RTM Radiator connection elbow



Radiator connection elbow with 15mm plated copper spigot.

Description	Code	Qty	Price each
16/200mm	1057379	1	22.06

## RTM Swivel nut union



Description	Code	Qty	Price each
16x½" FT	1057375	5	13.11
20x¾" FT	1057376	5	15.87

## RTM Pipe calibration tool



Must be used on every RTM connection.

Description	Code	Qty	Price each
16/20/25mm	1048606	1	3.21

**uponor**

# Uponor UK: your partner for commercial projects



**Old Oak Common Station, London**

Products supplied – Thermally Active Building System (TABS), underfloor heating, EcoFlex Thermo PRO pre-insulated pipe, MLC pipe and PEX pipe



**Dudley College, Dudley**

Products supplied – Thermally Active Building System (TABS), underfloor heating, EcoFlex Thermo PRO pre-insulated pipe, MLC pipe and PEX pipe



**Principal Hotel, London**

Products supplied – MLC Modular Riser system, MLC press system, manifold plumbing with Q&E Shrink-fit



**Aldi, over 80 stores nationwide**

Products supplied – Commercial underfloor heating system

To find out more about how we can assist you with a project, please email [marketing.uk@uponor.com](mailto:marketing.uk@uponor.com)



# Uponor S-Press PLUS Composite Fittings for MLC & SAC Pipes



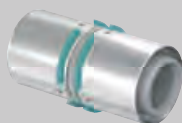
## Composite coupling



Made of PPSU with colour coded stainless steel press sleeve.

Description	Code	Qty	Price each
16x16mm	1039933	20	3.56
20x20mm	1039934	10	4.77
25x25mm	1039935	10	7.39
32x32mm	1039936	10	12.07

## S-Press



40x40mm	1046401	5	19.35
50x50mm	1046402	3	24.74
63x63mm	1032881	1	51.46
75x75mm	1032882	1	79.09

## Composite reducer



Made of PPSU with colour coded stainless steel press sleeve.

Description	Code	Qty	Price each
20x16mm	1039937	20	4.38
25x16mm	1039938	10	6.82
25x20mm	1039939	10	7.01
32x25mm	1039940	10	11.57

## S-Press



40x25mm	1039941	5	17.80
40x32mm	1039942	5	20.11
50x32mm	1039943	3	23.99
50x40mm	1046406	3	25.53
63x40mm	1032883	1	50.64
63x50mm	1032884	1	51.18
75x50mm	1032885	1	76.14
75x63mm	1032886	1	77.54

## Composite reduced tee



Made of PPSU with colour coded stainless steel press sleeve.

Description	Code	Qty	Price each
1 2 3			
16x20x16mm	1039948	10	8.37
20x16x16mm	1039949	10	8.37
20x16x20mm	1039950	10	8.37
20x20x16mm	1039951	10	8.37
20x25x20mm	1039952	10	14.54
25x16x16mm	1039953	10	10.14
25x16x20mm	1039954	10	12.75
25x16x25mm	1039955	10	11.71
25x20x20mm	1039956	10	10.89
25x20x25mm	1039957	10	13.73
32x16x32mm	1039958	5	17.67
32x20x32mm	1039959	5	21.44
32x25x25mm	1039960	5	21.53
32x25x32mm	1039961	5	21.86

## S-Press



40x20x40mm	1039962	5	26.18
40x25x32mm	1039963	5	28.34
40x25x40mm	1039964	5	28.34
40x32x32mm	1039965	5	27.58
40x32x40mm	1039966	5	29.89
50x25x40mm	1039967	3	35.93
50x25x50mm	1039968	3	37.55
50x32x50mm	1039969	3	42.14
50x40x50mm	1046400	3	45.64
63x25x63mm	1032889	1	73.36
63x32x63mm	1032890	1	77.72
63x40x63mm	1032891	1	82.86
75x32x75mm	1032892	1	100.39
75x40x75mm	1032893	1	101.14
75x50x75mm	1032894	1	112.03

## Composite elbow 90°



Made of PPSU with colour coded stainless steel press sleeve.

Description	Code	Qty	Price each
16x16mm	1039929	20	4.47
20x20mm	1039930	10	5.58
25x25mm	1039931	10	7.97
32x32mm	1039932	5	12.37

### S-Press

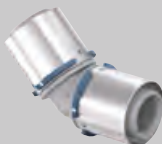


40x40mm	1046386	5	22.44
50x50mm	1046387	3	33.27
63x63mm	NEW 1032877	1	68.08
75x75mm	NEW 1032878	1	92.03

## Composite elbow 45°

Made of PPSU with colour coded stainless steel press sleeve.

### S-Press



40x40mm	1046388	5	37.11
50x50mm	1046389	3	49.48
63x63mm	NEW 1032879	1	69.45
75x75mm	NEW 1032880	1	97.16

## Composite equal tee



Made of PPSU with colour coded stainless steel press sleeve.

Description	Code	Qty	Price each
16x16x16mm	1039944	10	6.04
20x20x20mm	1039945	10	9.04
25x25x25mm	1039946	5	15.39
32x32x32mm	1039947	5	24.46

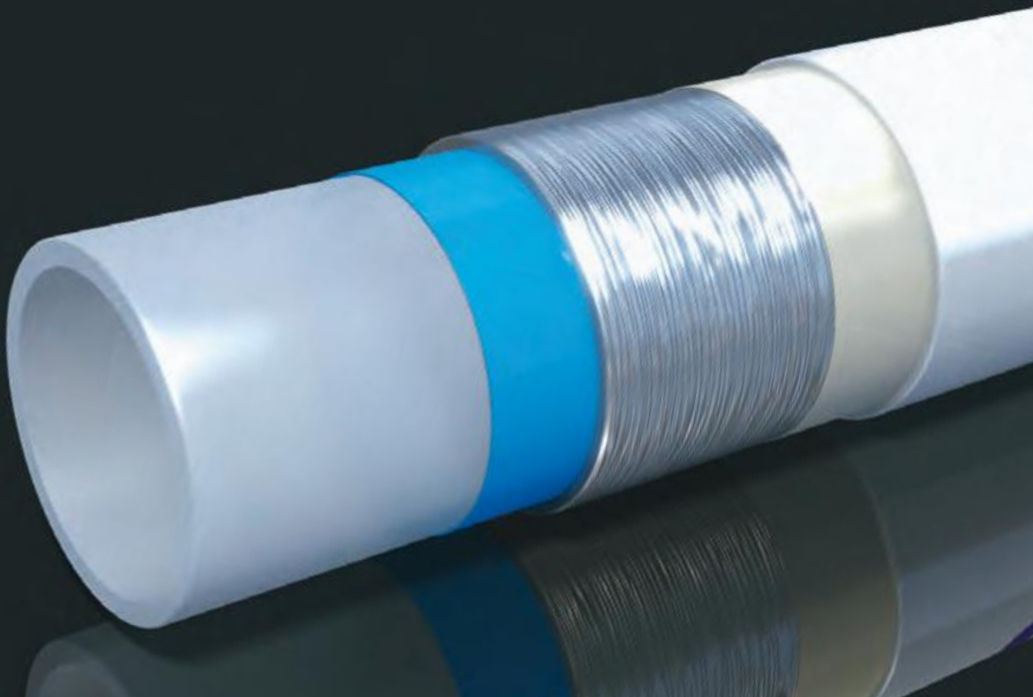
### S-Press



40x40x40mm	1046390	5	34.04
50x50x50mm	1046391	3	51.04
63x63x63mm	NEW 1032887	1	90.27
75x75x75mm	NEW 1032888	1	123.31

# Introducing Uponor

*the world's first*  
*Seamless Aluminium*  
*Composite Pipe – SACP*



# Uni-Pipe PLUS

At Uponor we strive to provide innovation which raises the standard for the quality and performance of plumbing installations. Uni-Pipe PLUS uses ground breaking technology to enhance the benefits of using multilayer pipe systems. More flexible, easier to use and even more reliable, the new pipes offer the designer and installer market leading performance whilst retaining all the benefits of a traditional MLCP.

*Compatible with all Uponor press systems,  
RTM and compression adapters.*



**30**  
YEARS  
**MLCP**

**Reliable and safe for more than 30 years!**



# Uponor S-Press PLUS Metal Fittings for MLC & SAC Pipes



## Adapter – male thread



Made of plated DZR brass with size colour coded stainless steel press sleeve. BSP 'R' type thread adapter for connections to BS EN 10226-1. \*Not S-Press Plus

Description	Code	Qty	Price each
14-R $\frac{1}{2}$ " MT* <span style="background-color: #0070C0; color: white; padding: 2px;">NEW</span>	<b>1014513</b>	20	5.69
16-R $\frac{3}{4}$ " MT	<b>1070501</b>	20	4.28
16-R $\frac{1}{2}$ " MT	<b>1070502</b>	20	5.16
16-R $\frac{3}{4}$ " MT	<b>1070503</b>	15	10.19
20-R $\frac{1}{2}$ " MT	<b>1070504</b>	20	6.43
20-R $\frac{3}{4}$ " MT	<b>1070505</b>	10	7.76
20-R1" MT	<b>1070506</b>	10	11.32
25-R $\frac{3}{4}$ " MT	<b>1070507</b>	10	9.87
25-R1" MT	<b>1070508</b>	5	12.85
32-R1" MT	<b>1070509</b>	5	14.60
32-R1 $\frac{1}{4}$ " MT	<b>1070510</b>	5	22.96

## S-Press



40-R1 $\frac{1}{4}$ " MT	<b>1046901</b>	5	23.49
40-R1 $\frac{1}{2}$ " MT	<b>1046902</b>	5	30.63
50-R1 $\frac{1}{2}$ " MT	<b>1046905</b>	3	33.39
50-R2" MT	<b>1046906</b>	3	51.49
63-R2" MT	<b>1032895</b>	1	66.28
75-R2 $\frac{1}{2}$ " MT	<b>1032896</b>	1	77.82

## Adapter – female thread



Made of plated DZR brass with size colour coded stainless steel press sleeve. BSP 'Rp' type female threaded adapter for screw connection to BS EN 10226-1. \*Not S-Press PLUS

Description	Code	Qty	Price each
14-Rp $\frac{1}{2}$ " FT* <span style="background-color: #0070C0; color: white; padding: 2px;">NEW</span>	<b>1014515</b>	20	6.34
16-Rp $\frac{1}{2}$ " FT	<b>1070515</b>	20	6.75
20-Rp $\frac{1}{2}$ " FT	<b>1070516</b>	15	7.20
20-Rp $\frac{3}{4}$ " FT	<b>1070517</b>	10	9.32
20-Rp1" FT	<b>1070518</b>	20	15.11
25-Rp $\frac{3}{4}$ " FT	<b>1070519</b>	5	10.14
25-Rp1" FT	<b>1070520</b>	5	17.92
32-Rp1" FT	<b>1070521</b>	5	18.73
32-Rp1 $\frac{1}{4}$ " FT	<b>1070522</b>	5	27.80

## S-Press



40-Rp1 $\frac{1}{4}$ " FT	<b>1046903</b>	5	26.37
40-Rp1 $\frac{1}{2}$ " FT	<b>1046904</b>	5	28.54
50-Rp1 $\frac{1}{2}$ " FT	<b>1046907</b>	3	31.78

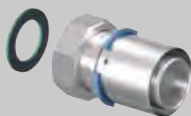
## Adapter - swivel nut



Made from plated DZR brass with size colour coded stainless steel press sleeve and flat sealing washer. Swivel nut screw connection.

Description	Code	Qty	Price each
16-G $\frac{3}{8}$ " SN	1070708	1	11.35
16-G $\frac{1}{2}$ " SN	1070602	1	12.66
16-G $\frac{3}{4}$ " SN	1070603	1	13.70
20-G $\frac{1}{2}$ " SN	1070604	1	14.71
20-G $\frac{3}{4}$ " SN	1070605	1	15.50
25-G $\frac{3}{4}$ " SN	1070606	1	16.14
25-G1" SN	1070607	1	16.73
25-G1 $\frac{1}{4}$ " SN	1070608	1	17.01
32-G1" SN	1070609	1	20.49
32-G1 $\frac{1}{4}$ " SN	1070610	1	27.95

## S-Press



40-G1 $\frac{1}{4}$ " SN	1060094	5	31.66
40-G1 $\frac{1}{2}$ " SN	1046937	5	34.84
50-G1 $\frac{1}{2}$ " SN	1060095	3	39.11
50-G1 $\frac{3}{4}$ " SN	1046938	3	37.48
50-G2" SN	1046939	3	43.17

## Adapter - male thread



Made from plated DZR brass with size colour coded stainless steel press sleeve. BSP 'R' type male threaded adapter for screw connections to BS EN 10226-1.

Description	Code	Qty	Price each
16-R $\frac{3}{8}$ " MT	1070531	20	4.90
16-R $\frac{1}{2}$ " MT	1070532	20	7.15
20-R $\frac{1}{2}$ " MT	1070533	10	10.82
20-R $\frac{3}{4}$ " MT	1070534	10	11.35
25-R $\frac{3}{4}$ " MT	1070535	5	14.76
25-R1" MT	1070536	5	15.90
32-R1" MT	1070537	5	21.43

## S-Press



40-R1 $\frac{1}{4}$ " MT	1046909	5	33.37
--------------------------	---------	---	-------

# Uponor S-Press PLUS Metal Fittings for MLC & SAC Pipes



## Adapter – elbow female thread



Made from plated DZR brass with size colour coded stainless steel press sleeve. BSP 'Rp' type female threaded adapter for screw connections to BS EN 10226-1.

Description	Code	Qty	Price each
16-Rp½" FT	<b>1070539</b>	10	7.60
20-Rp½" FT	<b>1070540</b>	10	10.01
20-Rp¾" FT	<b>1070541</b>	10	12.19
25-Rp¾" FT	<b>1070542</b>	5	14.98
25-Rp1" FT	<b>1070543</b>	5	16.59
32-Rp1" FT	<b>1070544</b>	5	22.52

## S-Press



40-Rp1½" FT	<b>1046910</b>	5	31.26
50-Rp1½" FT	<b>1046912</b>	3	38.70

## Adapter – elbow swivel nut



Made from plated DZR brass with size colour coded stainless steel press sleeve. BSP swivel nut connection with flat sealing washer.

Description	Code	Qty	Price each
16-G¾" SN	<b>1070611</b>	1	8.60
16-G½" SN	<b>1070612</b>	1	11.70
20-G½" SN	<b>1070613</b>	1	14.78
25-G¾" SN	<b>1070614</b>	1	16.77

## Adapter – male thread



Made from plated DZR brass with size colour coded stainless steel press sleeve. Compression type connection to 10mm copper pipe.

Description	Code	Qty	Price each
16-R¾" MT/10 Cu	<b>1070538</b>	1	5.98



Description	Code	Qty	Price each
16x16mm	1070523	20	6.43
20x20mm	1070524	10	8.69
25x25mm	1070525	5	13.90
32x32mm	1070526	5	20.27



40x40mm	1046908	5	29.61
50x50mm	1046911	3	41.73



Description	Code	Qty	Price each
25x25mm	1070545	5	26.08
32x32mm	1070546	5	31.08



40x40mm	1046913	5	55.71
50x50mm	1046914	3	55.71



Description	Code	Qty	Price each
16x16mm	1070527	10	7.31
20x20mm	1070528	10	9.09
25x25mm	1070529	5	13.97
32x32mm	1070530	5	20.55

# Uponor S-Press PLUS Metal Fittings for MLC & SAC Pipes



## Coupling



Made of plated DZR brass with size colour coded stainless steel press sleeve.  
\* Not S-Press PLUS

Description		Code	Qty	Price each
14x14mm*	<b>NEW</b>	<b>1015154</b>	10	5.59
16x16mm		<b>1070547</b>	20	6.06
20x20mm		<b>1070548</b>	10	8.11
25x25mm		<b>1070549</b>	10	12.24
32x32mm		<b>1070550</b>	5	18.41

## S-Press



40x40mm	<b>1046932</b>	5	24.68
50x50mm	<b>1046935</b>	3	32.39

## Reducer



Made of plated DZR brass with size colour coded stainless steel press sleeve.  
\* Not S-Press PLUS (Heating only)

Description		Code	Qty	Price each
16x14mm*	<b>NEW</b>	<b>1015162</b>	20	6.25
20x16mm		<b>1070552</b>	20	7.45
25x16mm		<b>1070553</b>	10	9.85
25x20mm		<b>1070554</b>	10	10.59
32x20mm		<b>1070555</b>	10	16.59
32x25mm		<b>1070556</b>	10	18.41

## S-Press



40x25mm	<b>1046930</b>	5	22.64
40x32mm	<b>1046931</b>	5	26.43
50x32mm	<b>1046933</b>	3	31.52
50x40mm	<b>1046934</b>	3	32.33



## Tee with male thread



Made of plated DZR brass with size colour coded press stainless steel sleeve.  
Central BSP 'R' type male threaded adapter for screw connections to BS EN 10226-1.

Description	Code	Qty	Price each
1 2 3			
16-R $\frac{1}{2}$ " MT-16	<b>1070592</b>	10	14.19
25-R $\frac{3}{4}$ " MT-25	<b>1070593</b>	5	27.37
32-R $\frac{3}{4}$ " MT-32	<b>1070594</b>	5	33.77

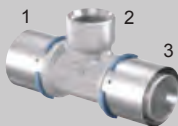
## Tee with female thread



Made of plated DZR brass with size colour coded press stainless steel sleeve. Central BSP 'Rp' type female threaded adapter for screw connections to BS EN 10226-1.

Description	Code	Qty	Price each
1 2 3			
16-Rp $\frac{1}{2}$ " FT-16	<b>1070595</b>	10	17.98
20-Rp $\frac{1}{2}$ " FT-20	<b>1070596</b>	15	20.44
20-Rp $\frac{3}{4}$ " FT-20	<b>1070597</b>	10	21.58
25-Rp $\frac{1}{2}$ " FT-25	<b>1070598</b>	5	23.51
25-Rp $\frac{3}{4}$ " FT-25	<b>1070599</b>	5	25.10
32-Rp $\frac{1}{2}$ " FT-32	<b>1070600</b>	5	27.97
32-Rp $\frac{3}{4}$ " FT-32	<b>1070601</b>	5	31.59

## S-Press



40-Rp $\frac{1}{2}$ " FT-40	<b>1046922</b>	5	32.34
40-Rp $\frac{3}{4}$ " FT-40	<b>1046923</b>	5	33.64
50-Rp1" FT-50	<b>1046929</b>	3	40.42

## Equal tee



Made of plated DZR brass with size colour coded stainless steel press sleeve.  
\*Not S-Press PLUS

Description	Code	Qty	Price each
14x14x14mm*	<b>NEW 1014886</b>	10	7.84
16x16x16mm	<b>1070560</b>	10	8.53
20x20x20mm	<b>1070561</b>	10	13.03
25x25x25mm	<b>1070562</b>	5	20.07
32x32x32mm	<b>1070563</b>	5	37.29

## S-Press



40x40x40mm	<b>1046921</b>	5	41.76
50x50x50mm	<b>1046928</b>	3	61.18

# Uponor S-Press PLUS Metal Fittings for MLC & SAC Pipes



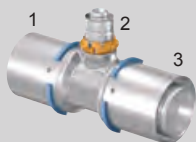
## Tee reducer



Made of plated DZR brass with size colour coded stainless steel press sleeve.  
\* Not S-Press PLUS (Heating only)

Description		Code	Qty	Price each
1 2 3				
14x16x14mm*	NEW	1014888	10	8.82
16x14x14mm*	NEW	1014912	10	8.62
16x14x16mm*	NEW	1014915	10	9.10
16x20x16mm		1070566	10	14.79
20x16x16mm		1070567	10	13.91
20x16x20mm		1070568	20	14.16
20x20x16mm		1070569	20	14.16
20x25x16mm		1070570	10	17.47
20x25x20mm		1070571	10	17.74
25x16x16mm		1070572	5	15.19
25x16x20mm		1070573	5	15.42
25x16x25mm		1070574	5	17.39
25x20x16mm		1070575	5	15.77
25x20x20mm		1070576	5	16.47
25x20x25mm		1070577	5	18.06
25x25x16mm		1070578	5	15.36
25x32x25mm		1070579	5	25.81
32x16x32mm		1070580	5	22.96
32x20x32mm		1070581	5	24.46
32x25x25mm		1070582	5	25.38
32x25x32mm		1070583	5	27.18

## S-Press



40x20x40mm	1046916	5	31.30
40x25x32mm	1046917	5	35.66
40x25x40mm	1046918	5	35.00
40x32x32mm	1046919	5	34.34
40x32x40mm	1046920	5	37.83
50x25x40mm	1046924	3	40.48
50x25x50mm	1046925	3	40.86
50x32x50mm	1046926	3	49.69
50x40x50mm	1046927	3	42.76

## Composite pipe to Copper adapter



Fitting body made from plated DZR brass with size colour coded stainless steel press sleeve. Adapter pipe made from plated BS EN 1057 copper tube for connections to metal press connections and copper compression fillings conforming to BS EN 1254.

\*Not S-Press PLUS

Description	Code	Qty	Price each
14-15 Cu*	<b>NEW</b> 1014511	10	6.35
16-10 Cu	1070705	20	5.75
16-12 Cu	1070706	20	5.27
16-15 Cu	1070615	20	4.38
20-15 Cu	1070707	10	6.27
20-22 Cu	1070617	15	6.68
25-22 Cu	1070618	5	7.90
25-28 Cu	1070619	5	14.46
32-28 Cu	1070620	5	14.12

## Stop end



Made from plated DZR brass with size colour coded stainless steel press sleeve.

Description	Code	Qty	Price each
16mm	1070621	40	4.05
20mm	1070622	20	4.48
25mm	1070623	10	5.27
32mm	1070624	5	10.31

## Smart Aqua U-tap elbow



Made from plated DZR brass with size colour coded stainless steel press sleeve. BSP 'Rp' type female thread connection. For use in 'serial' or 'loop' type installations. Mounting brackets and fixings on page 43.

Description	Code	Qty	Price each
16-Rp½" FT-16 l=43mm	1070629	5	21.85
20-Rp½" FT-20 l=43mm	1070630	5	25.83
20-Rp½" FT-16 l=43mm	1070631	5	25.83
16-Rp½" FT-20 l=43mm	1070632	5	25.83
25-Rp½" FT-25 l=51mm	1070633	3	37.56
25-Rp½" FT-20 l=51mm	1070634	3	48.16
20-Rp½" FT-25 l=51mm	1070635	3	48.16

## Smart Aqua U-tap elbow mixer



Made from plated DZR brass with size colour coded stainless steel press sleeve. BSP 'R' type male thread connection. For use in 'serial' or 'loop' type installations.

Description	Code	Qty	Price each
16-16-R½" MT	1070636	5	33.82
20-20-R¾" MT	1070637	5	39.96

# Uponor S-Press PLUS Metal Fittings for MLC & SAC Pipes



## Smart Aqua tap elbow



Made of plated DZR brass with size colour coded stainless steel press sleeve. BSP 'Rp' type female threaded connection – standard. \*Not S-Press PLUS

Description	Code	Qty	Price each
14-Rp½" FT l=40mm*	<b>1015437</b>	10	6.58
16-Rp¾" FT l=40mm	<b>1070638</b>	10	7.12
16-Rp½" FT l=40mm	<b>1070639</b>	10	7.12
20-Rp½" FT l=40mm	<b>1070640</b>	10	8.51
20-Rp¾" FT l=43mm	<b>1070641</b>	5	8.51
25-Rp¾" FT l=51mm	<b>1070642</b>	5	14.34

## Smart Aqua tap elbow long



Made of plated DZR brass with size colour coded stainless steel press sleeve. BSP 'Rp' type female threaded connection – long.

Description	Code	Qty	Price each
16-Rp½" FT l=50mm	<b>1070644</b>	10	7.27
20-Rp½" FT l=50mm	<b>1070645</b>	10	8.78

## Smart Aqua tap elbow XL



Made of plated DZR brass with size colour coded stainless steel press sleeve. BSP 'Rp' type female threaded connection – XL.

Description	Code	Qty	Price each
16-Rp½" FT l=62mm	<b>1070646</b>	10	7.71
20-Rp½" FT l=62mm	<b>1070647</b>	10	8.87

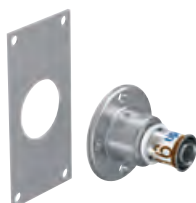
## Smart Aqua tap elbow twin 90° long



Made of plated DZR brass with size colour coded stainless steel press sleeve. BSP 'Rp' type female threaded connection – long.

Description	Code	Qty	Price each
16-Rp½" FT-16 l=50mm	<b>1070648</b>	10	16.05
20-Rp½" FT-20 l=50mm	<b>1070649</b>	10	16.44

## Smart Aqua adapter wall penetration



Twist proof connection for wall penetrations. Requires a 33mm hole. Made from plated DZR brass with size colour coded stainless steel press sleeve.

Description	Code	Qty	Price each
16-G½" FT	<b>1070652</b>	1	14.83

## Smart Aqua tap elbow LWC



Twist proof connection for wall penetrations. Requires a 33mm hole. Made from plated DZR brass with size colour coded stainless steel press sleeve. BSP 'R' type male thread for screw connections to BS EN 10226-1. Fitting kit included.

Description	Code	Qty	Price each
16-Rp½" FT I=25	<b>1070653</b>	1	40.40
16-Rp½" FT I=35	<b>1070654</b>	1	41.00

## Smart Aqua U-tap elbow LWC



Twist proof connection for wall penetrations. Requires a 33mm hole. Made from plated DZR brass with size colour coded stainless steel press sleeve. BSP 'R' type male thread for screw connections to BS EN 10226-1. For use in 'serial' or 'loop' installations. Fitting kit included.

Description	Code	Qty	Price each
16-Rp½" FT I=25	<b>1070655</b>	1	51.91
16-Rp½" FT I=35	<b>1070656</b>	1	58.30

## Smart Aqua tap elbow mount unit



Mounted Aqua tap elbow assembly. Fittings made from plated DZR brass with size colour coded stainless steel press sleeve. BSP 'Rp' type female threaded screw connections to BS EN 10226-1.

Description	Code	Qty	Price each
16-Rp½" FT c/c 80mm	<b>1070661</b>	5	17.84
16-Rp½" FT c/c 150mm	<b>1070662</b>	5	18.30

## Smart Aqua tap elbow mount unit



Mounted Aqua tap elbow assembly. Fittings made from plated DZR brass with size colour coded stainless steel press sleeve. BSP 'Rp' type female threaded screw connections to BS EN 10226-1.

Description	Code	Qty	Price each
16-Rp½" FT c/c 35mm	<b>1070683</b>	5	14.15
16-Rp½" FT c/c 50mm	<b>1070684</b>	5	14.33

## Smart Base baseboard adapter



A slim-line baseboard connection for radiators with valve connections at the bottom of the radiator. Made of plated DZR brass with size colour coded stainless steel press sleeve.

Description	Code	Qty	Price each
16-G½" MT-16	<b>1070693</b>	1	53.63
16-G½" MT-20	<b>1070694</b>	1	54.56
16-G½" MT-0	<b>1070695</b>	1	49.88
0-G½" MT-16	<b>1094219</b>	1	49.88
20-G½" MT-16	<b>1070696</b>	1	54.56
16-G½" MT-20	<b>1070697</b>	1	55.68



# Uponor S-Press PLUS Metal Fittings for MLC & SAC Pipes



## Smart Aqua tap elbow adapter



Body of the fitting made from plated DZR brass with size colour coded stainless steel press sleeve. BS EN 1057 plated copper pipe 15x1mm and 12x1mm. \*Not S-Press PLUS

Description		Code	Qty	Price each
14-12 Cu l=150mm*	<b>NEW</b>	<b>1014654</b>	20	8.90
16-15 Cu l=150mm		<b>1070650</b>	20	7.73
16-12 Cu l=150mm		<b>1070651</b>	20	7.32

## Smart Radi elbow adapter unplated



Body of the fitting made from DZR brass with size colour coded stainless steel press sleeve. BS EN 1057 copper pipe 15x1mm.

Description		Code	Qty	Price each
16-15 Cu l=250mm		<b>1070677</b>	20	12.89

## Smart Radi elbow adapter plated



Body of the fitting made from plated DZR brass with size colour coded stainless steel press sleeve. BS EN 1057 copper pipe 15x1mm and 22x1mm. \*Not S-Press PLUS

Description		Code	Qty	Price each
14-15 Cu l=350mm*	<b>NEW</b>	<b>1015615</b>	20	12.57
16-15 Cu l=350mm		<b>1070678</b>	20	14.51
16-15 Cu l=1000mm		<b>1070679</b>	20	25.34
25-22 Cu l=250mm		<b>1070680</b>	20	15.95

## Smart Radi tee adapter plated



Body of the fitting made from plated DZR brass with size colour coded stainless steel press sleeve. BS EN 1057 plated copper pipe 15x1mm.

Description		Code	Qty	Price each
16-15 Cu-16 l=350mm		<b>1070681</b>	20	22.79
20-15 Cu-20 l=350mm		<b>1070682</b>	20	25.28

## Uni-X Compression adapter (MLC)



For adaption of MLC to compression fitting bodies to BS EN 1254. Note: Threads on the fitting body **MUST** be checked to prove adequate length to make the connection. **A bevelling tool must be used (see page 109)**

Description		Code	Qty	Price each
12x15mm Chrome		<b>1013813</b>	20	4.86
14x15mm Chrome	<b>NEW</b>	<b>1048100</b>	10	4.36
16x15mm Brass		<b>1013805</b>	20	2.89
16x15mm Chrome		<b>1013806</b>	20	3.16
20x22mm Brass		<b>1013807</b>	10	5.35
25x28mm Brass		<b>1013808</b>	10	10.66

## Smart Radi crossing



A crossover free connection for radiators used within a floor or a wall.  
Made of plated DZR brass with size colour coded stainless steel press sleeve.

Description	Code	Qty	Price each
16-16-16	1070685	1	47.27
20-16-16	1070686	1	48.02
20-16-20	1070687	1	48.91
20-20-20	1070688	1	50.67

## Smart Radi crossing insulated



A crossover free connection for radiators used within a floor or a wall.  
Made of plated DZR brass with size colour coded stainless steel press sleeve.

Description	Code	Qty	Price each
16-16-16	1070689	1	50.36
20-16-16	1070690	1	51.12
20-16-20	1070691	1	51.96
20-20-20	1070692	1	53.70

## Press lever ball valve



Description	Code	Qty	Price each
16mm	1046603	6	30.58
20mm	1046604	6	42.14
25mm	1046605	6	46.74
32mm	1046606	6	63.19

## S-Press



40mm	1046607	6	118.44
50mm	1046608	4	137.15

## S-Press Coupler



For connection of Uponor MLC to copper and stainless steel heating pipes.  
Metal press connections use either M or V profile press tools.

Description		Code	Qty	Price each
M Profile 16-15CU-SST	NEW	1090682	10	8.55
M Profile 20-22CU-SST	NEW	1090683	5	10.97
M Profile 25-22CU-SST	NEW	1090684	5	12.18
M Profile 32-28CU-SST	NEW	1090685	5	15.35
V Profile 16-15CU-SST	NEW	1090678	10	8.86
V Profile 20-22CU-SST	NEW	1090679	5	11.56
V Profile 25-22CU-SST	NEW	1090680	5	12.68
V Profile 32-28CU-SST	NEW	1090681	5	12.58

# MLC

uponor

## Modular press system

The multi-layered system with multiple benefits

### **Suitable for:**

Heating - 10 bar @ 80°C

Domestics - 10 bar @ 70°C

Sizes 16mm to 110mm

Lightweight, formstable and  
easy to install

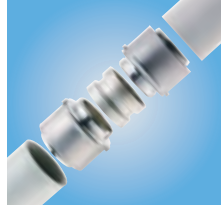
No hot works required

### **Applications include:**

Domestic, healthcare, education,  
multi-residential and commercial

# Uponor's (Modular) Riser System

Uponor's MLC RS fittings range is fast becoming the system of choice on many world-class projects. With just a small range of easy to install fittings, hundreds of connection possibilities can be created. The distinctive "click and lock" mechanism removes the need for overhead pressing allowing safe, quicker installation.



Plumbing, Heating  
& Building Services

## 3 SIMPLE STEPS

### 1 SELECT THE BODY SIZE

**'RS2'**

(up to 75mm)

OR

**'RS3'**

(for 90mm - 110mm)

### 2 SELECT THE BODY CONNECTION TYPE



Tee



45° Elbow



90° Elbow



Coupler



Reducer

### 3 CHOOSE ADAPTERS TO SUIT CONNECTION



Adapter



Female Thread



Male Thread



Flange

## Benefits:

- Components with hundreds of fitting variations possible
- Greater flexibility and lower logistics costs thanks to minimal number of system components
- Optimum availability with less storage space and lower investment costs
- Quick to install and can be pressed at the workbench

## RS (Modular)

### RS-Press adapter MLC & SAC



Made of tin plated brass with stainless steel press sleeve. For connection of MLC to RS2/RS3 Bodies. **Note: All RS-Press Adapters must only be pressed using the approved Uponor UP75 or UP110 (1083612) tools.** \*S-Press PLUS connection.

Description	Code	Qty	Price each
RS 2-16	<b>1059397</b>	1	22.73
RS 2-20*	<b>NEW</b> 1095818	1	22.95
RS 2-25*	<b>NEW</b> 1095819	1	24.48
RS 2-32*	<b>NEW</b> 1095820	1	24.48
RS 2-40	<b>1046940</b>	1	26.87
RS 2-50	<b>1046941</b>	1	26.87
RS 2-63	<b>1029125</b>	1	26.59
RS 2-75	<b>1029126</b>	1	33.67
RS 3-90	<b>1029127</b>	1	94.20
RS 3-110	<b>1029128</b>	1	100.93

# RS (Modular)

## RS elbow 90°



Made of tin plated brass. Includes 2 lock pins.

Description	Code	Qty	Price each
RS 2	1029138	1	26.59
RS 3	1029139	1	80.74

## RS elbow 45°



Made of tin plated brass. Includes 2 lock pins.

Description	Code	Qty	Price each
RS 2	1029140	1	37.69
RS 3	1029141	1	87.48

## RS coupling



Made of tin plated brass. Includes 2 lock pins.

Description	Code	Qty	Price each
RS 2	1029144	1	24.25
RS 3	1029145	1	60.57

## RS tee



Made of tin plated brass. Includes 3 lock pins.

Description	Code	Qty	Price each
RS 2	1029142	1	33.67
RS 3	1029143	1	87.48

## RS reducer



Made of tin plated brass. Includes 1 lock pin.

Description	Code	Qty	Price each
RS3-RS2	1029146	1	44.42

## Spare lock pins



Description	Code	Qty	Price each
RS2 modular lock pin (black)	1042921	10	2.40
RS3 modular lock pin (grey)	1042922	10	5.60



# RS (Modular)

## RS adapter - male thread



Made of tin plated brass. For connection to RS2/RS3 Bodies.  
'R' type male thread to BS EN 10226-1.

Description	Code	Qty	Price each
RS 2 MT 1 ½"	<b>1059402</b>	1	27.52
RS 2 MT 2"	<b>1029131</b>	1	29.62
RS 2 MT 2 ½"	<b>1029132</b>	1	40.39
RS 3 MT 3"	<b>1029133</b>	1	47.10

## RS adapter - female thread



Made of tin plated brass. For connection to RS2/RS3 Bodies.  
Rp type female thread to BS EN 10226-1.

Description	Code	Qty	Price each
RS 2 FT ½"	<b>1059403</b>	1	23.60
RS 3 FT ½"	<b>1059404</b>	1	32.44
RS 2 FT 1"	<b>1029134</b>	1	20.20
RS 2 FT 2"	<b>1029135</b>	1	29.62
RS 2 FT 2½"	<b>1029136</b>	1	40.39
RS 3 FT 3"	<b>1029137</b>	1	47.10

## RS flange adapter



Made of tin plated brass. For connection to RS2/RS3 Bodies.

Description	Bolt Circle	Bolt Holes	Code	Qty	Price each
RS 2 DN 65 (PN 6)	130	4	<b>1059398</b>	1	145.29
RS 2 DN 65 (PN 16)	145	4	<b>1059399</b>	1	181.60
RS 3 DN 80 (PN 6)	150	4	<b>1059400</b>	1	190.69
RS 3 DN 80 (PN 16)	160	8	<b>1029129</b>	1	180.33
RS 3 DN 100 (PN 6)	170	4	<b>1059401</b>	1	205.51
RS 3 DN 100 (PN 16)	180	8	<b>1029130</b>	1	201.71

## RS spacer



Made of tin plated brass. For connection to RS2/RS3 Bodies.  
\*Finished measurement of the spacer once fitted.

Description	Code	Qty	Price each
RS 2 170mm (130mm*)	<b>1046477</b>	1	73.48
RS 3 250mm (210mm*)	<b>1046478</b>	1	127.17
RS 2 5mm	<b>1046750</b>	1	35.34
RS 3 5mm	<b>1046751</b>	1	56.53

JUST 40 COMPONENTS WILL  
MAKE OVER

**300**

DIFFERENT CONNECTION  
CONFIGURATIONS



**40**

COMPONENTS ARE SUFFICIENT  
FOR AN ENTIRE SYSTEM

# Smart End Elbow Range

## For Uponor tap water system



Plumbing, Heating  
& Building Services



1 Fix bracket and mount fitting



2 Connect pipe and pressure test



3 Finish the wall over the assembly



4 Connect tap to the BSP thread.

### Q&E PEX Shrink-fit Smart Aqua



Page 54

### S-Press PLUS Smart Aqua for MLC & SAC



Page 31

### RTM Smart Aqua for MLC & SAC



Page 16

## Uponor S-Press PLUS Smart Ends & Accessories for MLC & SAC

Fitting body made from plated DZR brass with size colour coded press sleeve. The Smart Aqua range are ideal for use in situations where hygiene is a prime consideration. Using the Smart Aqua range, plumbing schemes can be installed using the 'serial' or 'loop' type configuration to help prevent water stagnation

**Smart Aqua  
U-tap elbow**



**Page 31**

**Smart Aqua  
U-tap elbow  
mixer**



**Page 31**

**Smart Aqua  
tap elbow**



**Page 32**

**Smart  
Aqua tap  
twin 90° long**



**Page 32**

**Smart Aqua  
tap elbow  
LWC**



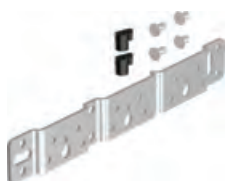
**Page 33**

**Smart Aqua  
U-tap elbow  
LWC**



**Page 33**

## Mounting plate



For use with Smart End wall elbows. Designed for on-wall mounting. Allows tap connections with 75mm or 150mm spacings. Supplied with 2 insert pins and screws.

Description	Code	Qty	Price each
75/150mm	1057840	5	2.56

## Mounting angle



For use with Smart End wall elbows. Designed for in-wall mounting and flush finish. Allows tap connections with 75mm or 150mm spacing. Supplied with 2 inserts pins and screws.

Description	Code	Qty	Price each
75/150mm	1057842	5	5.00

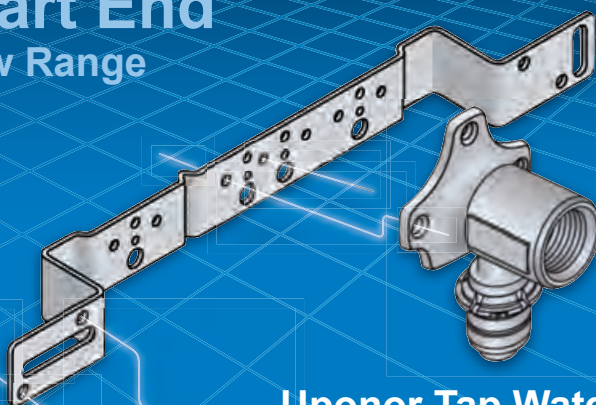
## Mounting track



For use with Smart End wall elbows, on-wall or in-wall construction, with mounting steps every 75mm.

Description	Code	Qty	Price each
2000mm	1057844	10	17.48

# Smart End Elbow Range



**Uponor Tap Water System**  
**Uponor MLC & SAC Pipe**

[www.uponor.co.uk](http://www.uponor.co.uk)

# Uponor BIM: the means to flawless installations

At Uponor, we are committed to helping you achieve your project aims via BIM services:

- Extensive product file library - 1500 products +
- 3D (product) models available in Revit and Autocad
- Copper and steel system conversions to Uponor value engineered solutions
- Design and 3D modelling of Uponor radiant heating & cooling solutions
- The opportunity to collaborate and co-ordinate information and resources

To find out more, please visit  
[www.uponor.co.uk](http://www.uponor.co.uk)







# **uponor** **Q&E Shrink-Fit** **PLUMBING SYSTEM**

**Fast, secure, connects in seconds**

## **Uponor Q&E PEX Plumbing System**

Uponor Q&E Shrink-fit PEX plumbing system, with EVOH oxygen diffusion barrier, suitable for use with heating water, chilled water and domestic services. Manufactured to BS EN 15875, with full WRAS Product Approval.

Plumbing, Heating  
& Building Services

### **Q&E PEX Pipe white, supplied in 3m or 5m straight lengths**



Description	Code	Qty	Price per/m
16x1.8mm (3m)	<b>1058803</b>	75m	2.51
20x1.9mm (3m)	<b>1058804</b>	48m	4.75
25x2.3mm (3m)	<b>1058805</b>	30m	6.26
32x2.9mm (5m)	<b>1083815</b>	35m	9.57
40x3.7mm (5m)	<b>1083816</b>	15m	17.39
50x4.6mm (5m)	<b>1083817</b>	10m	24.83
63x5.8mm (5m)	<b>1083818</b>	5m	38.88

### **Q&E PEX Pipe white, supplied in coils**



Description	uPoints	Code	Qty	Price per/m
12x1.1mm		<b>1085245</b>	100m	1.64
16x1.8mm	200	<b>1059173</b>	50m	2.33
16x1.8mm	350	<b>1059182</b>	100m	2.33
16x1.8mm	700	<b>1059183</b>	200m	2.33
16x1.8mm	1750	<b>1058802</b>	500m	2.29
20x1.9mm	250	<b>1059174</b>	50m	4.36
25x2.3mm	300	<b>1059175</b>	50m	6.23
32x2.9mm		<b>1084387</b>	50m	6.43

## Q&E PEX pipe-in-conduit



Pipe-in-pipe system is designed to be integrated into the building structure and to be covered by screeds. Pipe can be withdrawn without damage to the building structure. Complies with the requirements of the Water Regulations 1999.

Description	uPoints	Code	Qty	Price per/m
16mm - Red	250	<b>1059179</b>	50m	3.84
20mm - Red	300	<b>1059180</b>	50m	4.75
20mm - Blue	300	<b>1059177</b>	50m	4.75
25mm - Red	350	<b>1059181</b>	50m	5.40

## Q&E Conduit (does not include PEX pipe)



Made of high-density polyethylene. Supplied in coils. First number shown in description refers to I.D. of the protective tube. The second is the size of PEX suitable.

Description	Use with pipe	Code	Qty	Price per/m
20 Red	16mm	<b>1012858</b>	50m	1.28
20 Blue	16mm	<b>1012859</b>	50m	1.28
20 Black	16mm	<b>1012860</b>	50m	1.28
23 Red	20mm	<b>1012862</b>	50m	1.62
23 Blue	20mm	<b>1012863</b>	50m	1.62
23 Black	20mm	<b>1012864</b>	50m	1.62
29 Red	25mm	<b>1012866</b>	50m	2.36
29 Blue	25mm	<b>1012867</b>	50m	2.36
29 Black	25mm	<b>1012869</b>	50m	2.36
36 Black	32mm	<b>1012872</b>	25m	2.76

## Q&E Rings



Must be used on all Q&E Shrink-fit system connections.

Description	Code	Qty	Price each
12mm Red	<b>1058454</b>	20	0.21
12mm Blue	<b>1058453</b>	20	0.22
16mm Red	<b>1058010</b>	20	0.38
16mm Blue	<b>1058013</b>	20	0.38
16mm White	<b>1057453</b>	20	0.38
20mm Red	<b>1058011</b>	20	0.45
20mm Blue	<b>1058014</b>	20	0.45
20mm White	<b>1057454</b>	20	0.45
25mm Red	<b>1058012</b>	20	0.51
25mm Blue	<b>1058015</b>	20	0.51
25mm White	<b>1057455</b>	20	0.51
32mm White	<b>1057456</b>	10	1.08
40mm Natural	<b>1045464</b>	5	1.41
50mm Natural	<b>1045489</b>	5	3.38
63mm Natural	<b>1045490</b>	5	6.02

## Q&E Coupling



Made from Engineered Plastic (PPSU). Uponor Q&E Shrink-fit connections on both ends. \*Brass body fitting.

Description	Code	Qty	Price each
12mm*	<b>1058467</b>	10	3.10
16mm	<b>1008669</b>	5	1.51
20mm	<b>1008932</b>	5	2.12
25mm	<b>1008671</b>	5	3.22
32mm	<b>1001235</b>	1	5.90
40mm	<b>1008673</b>	1	11.34
50mm	<b>1042866</b>	1	20.17
63mm	<b>1042865</b>	1	32.74

## Q&E Elbow 90°



Made from Engineered Plastic (PPSU). Uponor Q&E Shrink-fit connections on both ends. \*Brass body fitting.

Description	Code	Qty	Price each
12mm*	<b>1058470</b>	10	4.00
16mm	<b>1008679</b>	5	1.49
20mm	<b>1008680</b>	5	2.37
25mm	<b>1008681</b>	5	4.60
32mm	<b>1001245</b>	1	7.55
40mm	<b>1008683</b>	1	14.81
50mm	<b>1042859</b>	1	28.08
63mm	<b>1042858</b>	1	51.25

## Q&E Equal tee



Made from Engineered Plastic (PPSU). Uponor Q&E Shrink-fit connections on both ends. \*Brass body fitting.

Description	Code	Qty	Price each
12mm*	<b>1058475</b>	10	6.72
16mm	<b>1008684</b>	5	2.19
20mm	<b>1008685</b>	5	3.17
25mm	<b>1008686</b>	5	5.28
32mm	<b>1001250</b>	1	11.75
40mm	<b>1008688</b>	1	19.04
50mm	<b>1042861</b>	1	45.86
63mm	<b>1042860</b>	1	76.89

## Q&E Tee reducer



\*Brass body fitting

Made from Engineered Plastic (PPSU). Uponor Q&E Shrink-fit connections on each end. \*Brass body fitting.

Description	Code	Qty	Price each
1 2 3			
16x12x12mm*	1058477	10	4.08
16x12x16mm*	1058478	10	4.16
16x20x16mm	1008710	5	3.55
20x16x16mm	1008700	5	3.55
20x16x20mm	1008689	5	3.55
20x20x16mm	1008697	5	3.55
20x25x20mm	1008711	5	5.33
25x12x25mm*	1085246	5	5.65
25x16x16mm	1008702	5	5.33
25x16x20mm	1008699	5	5.33
25x16x25mm	1008690	5	5.33
25x20x16mm	1008701	5	5.33
25x20x20mm	1008703	5	5.33
25x20x25mm	1008691	5	4.90
25x25x20mm	1001420	5	6.12
25x32x25mm	1008712	1	9.21
32x25x20mm	1008704	1	9.11
32x20x25mm	1001422	1	8.55
32x20x32mm	1001424	1	9.17
32x25x25mm	1001426	1	9.32
32x25x32mm	1001428	1	10.09
40x25x40mm	1008695	1	15.73
40x32x40mm	1008696	1	17.23
40x20x32mm	1008707	1	15.00
40x25x32mm	1008708	1	15.27
40x32x32mm	1008709	1	15.61
40x20x40mm	1008694	1	14.96
50x40x40mm	1042862	1	42.26
50x32x50mm	1042863	1	39.29
50x25x50mm	1042864	1	38.51
50x40x50mm	1042875	1	40.86
50x25x40mm	1042876	1	35.67
63x50x50mm	1042868	1	66.02
63x40x40mm	1042869	1	60.14
63x32x63mm	1042870	1	62.93
63x25x50mm	1042871	1	59.76
63x40x63mm	1042872	1	65.37
63x25x63mm	1042873	1	64.88
63x50x63mm	1042874	1	71.20

## Q&E Elbow 90° with female thread



Uponor Q&E Shrink-fit connection on one end, with BSP 'RP' type female-threaded adapter for screw connections to BS EN 10226-1.

Description	Code	Qty	Price each
16x½" FT PPSU	<b>1042334</b>	5	4.90
20x½" FT PPSU	<b>1042335</b>	5	8.15
20x¾" FT PPSU	<b>1042336</b>	5	8.15
25x¾" FT PPSU	<b>1042337</b>	5	8.15
16x½" FT Brass	<b>1023023</b>	5	5.16
20x½" FT Brass	<b>1023024</b>	5	7.36
20x¾" FT Brass	<b>1023025</b>	5	8.25
25x¾" FT Brass	<b>1023026</b>	5	9.16



## Q&E Female centre tee



Made from engineered plastic (PPSU). Uponor Q&E Shrink-fit connections on both ends, with female BSP 'RP' type thread. For connections to BS EN 10226-1.

Description	Code	Qty	Price each
1 2 3			
16x½"x16mm	<b>1042338</b>	5	5.20
20x½"x20mm	<b>1042339</b>	5	6.53
25x½"x25mm	<b>1042340</b>	5	8.15
25x¾"x25mm	<b>1042341</b>	5	8.57

## Q&E Adapter male thread



Uponor Q&E Shrink-fit connection on one end, with BSP 'R' type male thread (brass) adapter. 'G' type male thread (PPSU) adapter for screw connections to BS EN 10226-1.

Description	Code	Qty	Price each
16x½" MT	<b>1008661</b>	5	3.91
20x½" MT	<b>1008662</b>	5	4.60
20x¾" MT	<b>1008663</b>	5	4.60
25x¾" MT	<b>1008664</b>	5	4.90
25x1" MT	<b>1008665</b>	5	7.49
25x¾" MT (Brass)	<b>1047862</b>	5	5.97
25x1" MT (Brass)	<b>1047863</b>	5	11.08
32x1" MT (Brass)	<b>1008730</b>	1	13.73
40x1¼" MT (Brass)	<b>1008732</b>	1	23.02
50x1½" MT (Brass)	<b>1047864</b>	1	40.76
63x2" MT (Brass)	<b>1008867</b>	1	83.76



## Q&E adapter female thread



Uponor Q&E Shrink-fit connection on one end, with BSP 'Rp' type female-threaded adapter for screw connections to BS EN 10226-1.

Description	Code	Qty	Price each
16x $\frac{1}{2}$ " FT PPSU	1042329	5	5.30
20x $\frac{1}{2}$ " FT PPSU	1042330	5	6.68
20x $\frac{3}{4}$ " FT PPSU	1042331	5	6.88
25x $\frac{3}{4}$ " FT PPSU	1042332	5	8.15
25x $\frac{3}{4}$ " FT Brass	1023012	5	8.80
25x1" FT Brass	1023013	5	14.75
32x1" FT Brass	1047866	1	16.92
40x1 $\frac{1}{4}$ " FT Brass	1047867	1	41.78
50x1 $\frac{1}{2}$ " FT Brass	1085078	1	94.48



## Q&E Reducer



Uponor Q&E Shrink-fit connection on both ends. \*Brass body fitting.

Description	Code	Qty	Price each
16x12mm*	1058468	10	2.15
20x16mm	1008674	5	2.06
25x16mm	1008675	5	3.28
25x20mm	1008676	5	4.10
32x25mm	1001240	1	5.09
40x32mm	1008678	1	8.34
50x32mm	1042879	1	22.87
50x40mm	1042867	1	22.25
63x40mm	1042878	1	34.40
63x50mm	1042877	1	33.40

## Q&E Elbow with male thread



Uponor Q&E Shrink-fit connection on one end, with 'G' male-threaded adapter for screw connections.

Description	Code	Qty	Price each
16xG $\frac{1}{2}$ " MT	1008666	5	3.65
20xG $\frac{1}{2}$ " MT	1008667	5	4.24
25xG $\frac{3}{4}$ " MT	1008668	5	5.62

## Q&E Stop end



Description	Code	Qty	Price each
16mm	1084671	20	1.62



## Q&E Adapter - swivel nut



Uponor Q&E Shrink-fit connection on one end, with 'G' type female-threaded adapter for screw connections. Washer included.

Description	Code	Qty	Price each
16x½" PPSU	1038021	1	6.53
16x½" Brass	1023014	5	3.77
20x½" Brass	1023015	5	5.09
20x¾" Brass	1023016	5	4.94
25x¾" Brass	1023017	5	8.13
25x1" Brass	1023018	5	9.30

## Q&E Adapter elbow 90° - swivel nut



Uponor Q&E Shrink-fit connection on one end, with 'G' type female-threaded adapter for screw connections. Washer included.

Description	Code	Qty	Price each
16x½" FT	1038037	1	7.02

## Q&E Manifold (PPSU)



Made from engineered plastic (PPSU), with 'G' type threaded inlet. Use with Q&E PEX rings.

Description	Code	Qty	Price each
¾"x16x16x16mm	1008714	1	11.41
¾"x20x16x16mm	1008716	1	11.41
¾"x16x16x16x16mm	1008715	1	11.92
¾"x20x16x16x16mm	1008717	1	11.92

## Q&E Manifold (PPSU), Q&E inlet



Supplied as a single manifold. Made from engineered plastic (PPSU). Use with Q&E PEX rings.

Description	Code	Qty	Price each
25/16x16x16mm	1008718	1	11.41
25/16x16x16x16mm	1008719	1	11.92

## Q&E Modular manifold c/c 50



Made from engineered plastic (PPSU), 'G' type threaded outlet to BS EN 10226-1.

Description	Code	Qty	Price each
1xG $\frac{1}{2}$ "	1047997	1	11.41
1xG $\frac{3}{4}$ "	1047998	1	12.51

## Q&E Modular manifold c/c 50



Made from engineered plastic (PPSU), c/w with Q&E outlets.

Description	Code	Qty	Price each
2x16	1047999	1	13.04
3x16	1048000	1	14.67
4x16	1048001	1	19.56

## Q&E Modular straight connection



Made from engineered plastic (PPSU). For straight adaption from Modular manifold, 'G' type thread.

Description	Code	Qty	Price each
$\frac{3}{4}$ "	1048002	1	9.79

## Q&E Modular elbow connection



Made from engineered plastic (PPSU). For 90 degree adaption from Modular manifold, 'G' type thread.

Description	Code	Qty	Price each
$\frac{3}{4}$ "	1048003	1	9.41

## Q&E Modular end cap



Description	Code	Qty	Price each
1"	1048004	1	6.53
1" c/w air nipple	1048005	1	16.30

## Q&E Aqua Plus Modular Manifold Bracket



Description	Code	Qty	Price each
1" Bracket	1092021	1	10.56

## Q&E to soldered Copper adapter



To adapt to Q&E PEX pipe from soldered copper. Allow to cool before making Q&E joint.

Description	Code	Qty	Price each
12x15Cu	<b>1085248</b>	5	2.47
16x15Cu	<b>1023040</b>	5	2.47
20x15Cu	<b>1023041</b>	5	4.74
20x22Cu	<b>1047941</b>	5	5.39
25x22Cu	<b>1023042</b>	5	5.14
25x28Cu	<b>1047942</b>	5	6.53
32x28Cu	<b>1047943</b>	1	35.62

## Q&E to Copper compression adapter



To adapt to Q&E PEX pipe from copper compression.

\*Not suitable for push fit or press fit type joints.

Description	Code	Qty	Price each
16x15mm	<b>1008734</b>	5	2.87
20x22mm	<b>1008736</b>	5	4.84

## Q&E to MLC adapter



The fitting features a Q&E nipple onto S-PRESS connections giving a simple adaption from PEX to MLC pipework. This makes interchanging from both systems easier, faster and neater.

Description	Code	Qty	Price each
16mm	<b>1062845</b>	1	9.19
20mm	<b>1062846</b>	1	8.88
25mm	<b>1062861</b>	1	12.24

## Q&E Compression adapters (PEX pipe)



Brass compression fitting to be used in conjunction with standard 15mm compression fitting bodies. Compatibility of threads must be checked.

Description	Code	Qty	Price each
12x½" FT	<b>1085247</b>	5	3.99
16x½" FT	<b>1058934</b>	1	4.45
20x½" FT	<b>1058935</b>	1	8.96

## Q&E adapter to RS2 fittings



To adapt to Q&E PEX pipe from MLC Riser system.

Description	Code	Qty	Price each
RS Adapter Q&E PL Q&E 25-RS2	<b>1047021</b>	1	25.02
RS Adapter Q&E PL Q&E 32-RS2	<b>1047022</b>	1	25.02
RS Adapter Q&E PL Q&E 40-RS2	<b>1047023</b>	1	28.59
RS Adapter Q&E PL Q&E 50-RS2	<b>1047024</b>	1	28.59
RS Adapter Q&E PL Q&E 63-RS2	<b>1047026</b>	1	28.59

# Uponor Q&E PEX Plumbing System

## Q&E Valve



Fully assembled and sealed lever valve.

Description	Code	Qty	Price each
25 x 25mm	1038428	1	19.25
32 x 32mm	1038429	1	36.47

## Q&E Smart Aqua tap elbow



For use with Smart End mounting brackets. See page 43.

Description	Code	Qty	Price each
16½" FT	1059822	5	9.32
20½" FT	1059823	5	10.61

## Q&E Smart Aqua U-tap elbow



For use with Smart End mounting brackets. See page 43.

Description	Code	Qty	Price each
16½" FTx16	1059820	1	32.98
20½" FTx20	1059821	1	42.66

## Q&E Termination Box



To be used with 16x ½" FT 90° elbow (item 1042334) and radiator connection pipe.

Description	Code	Qty	Price each
16x ½" FT	1048622	10	4.10

## Radiator connection pipe



15mm copper x ½" BSP MT to connect radiator to termination box.

Description	Code	Qty	Price each
½" MT x 350mm Chrome plated	1015425	20	11.11

## Q&E termination box mounting tool



For sealing off Uponor ½" outlets during pressure testing.

Description	Code	Qty	Price each
½" MT	1008281	1	2.47

## Q&E Radiator connection elbow



Uponor Q&E PEX plumbing system on one end. Chrome plated brass elbow with 15mm spigot for connection to radiators.

Description	Code	Qty	Price each
16x300mm	<b>1023045</b>	2	16.30

## Radiator connection guide (solid floor)



Robust bend support and white powder coated aluminium upstand to protect pipe between floor and radiator. Price refers to a pack of two guides.

Description	Code	Qty	Price each
12/16mm	<b>1002237</b>	1	24.79

## Snap ring



Clip-on snap ring made of Polypropylene, available in white only.

Description	Code	Qty	Price each
15/16mm	<b>1011370</b>	50	0.41

## Single bend guide plastic



Used to curve and protect Uponor evalPEX 16mm pipe-in-pipe up out of the floor leaving only the Uponor evalPEX 16mm pipe exposed through the floor. Protects the pipe below floor level. Price refers to single bend guide.

Description	Code	Qty	Price each
Single bend guide, PEX 16mm pipe-in-pipe	<b>1009008</b>	10	7.82

# Manifolds & Accessories

## Uni-X Manifold H – N/V



Stainless steel flow and return manifolds for heating. Comes complete with mounting brackets. Primary connections are 1" BSP threads, outlet connections are 3/4" Eurocone (sold separately).

Description	Code	Qty	Price each
2 port	1088873	1	89.15
3 port	1088874	1	98.18
4 port	1088875	1	108.14
5 port	1088876	1	128.18
6 port	1088877	1	144.09
7 port	1088878	1	158.06
8 port	1088879	1	171.16
9 port	1088880	1	186.19
10 port	1088881	1	202.20
11 port	1088882	1	222.37
12 port	1088883	1	237.59

## Vario S Manifold L/S



Stainless steel flow and return manifolds for heating. Comes complete with mounting brackets. Lockshield valves supplied. Actuators can be added if required page 90 or page 92. Primary connections are 1" BSP threads, outlet connections are 3/4" Eurocone (sold separately).

Description	Code	Qty	Price each
2 port	1088045	1	111.92
3 port	1088046	1	134.44
4 port	1088047	1	155.02
5 port	1088048	1	181.58
6 port	1088049	1	205.38
7 port	1088050	1	234.25
8 port	1088051	1	256.94
9 port	1088052	1	292.60
10 port	1088053	1	321.09
11 port	1088054	1	352.23
12 port	1088055	1	377.86
13 port	1088868	1	409.95
14 port	1088869	1	440.97
15 port	1088870	1	471.97
16 port	1088871	1	504.38

## Eurocone compression adapter for Q&E PEX



Made of plated brass 3/4" Eurocone adapter for connections to Uni-X N/V and Vario S L/S manifolds.

Description	Code	Qty	Price each
16x3/4" FT	1057441	10	6.85
20x3/4" FT	1057442	10	7.07



## Eurocone compression adapter for MLC & SAC



Made of plated brass  $\frac{3}{4}$ " Eurocone adapter for connections to Uni-X N/V and Vario S L/S manifolds.

Description	Code	Qty	Price each
14x $\frac{3}{4}$ " FT Eurocone <b>NEW</b>	<b>1058089</b>	10	6.19
16x $\frac{3}{4}$ " FT Eurocone	<b>1058090</b>	1	4.54
20x $\frac{3}{4}$ " FT Eurocone	<b>1058092</b>	1	5.33
25x $\frac{3}{4}$ " FT Eurocone	<b>1058093</b>	1	10.80

## UNI-C Manifold with valves, L



Supplied as a single manifold. Made of plated brass,  $\frac{3}{4}$ " or 1" MT x FT connections with  $\frac{1}{2}$ " or  $\frac{3}{4}$ " MT outlets. Valves allow each circuit to be isolated. Delivered with loop labelling discs. Order adapters separately for connection to Uponor pipe (MLC/SAC/Q&E). Manifolds can be joined to make the required number of ports. 5 bar maximum operating pressure

Description	Code	Qty	Price each
2 port $\frac{3}{4}$ " x $\frac{1}{2}$ " MT outlets	<b>1002280</b>	1	22.26
3 port $\frac{3}{4}$ " x $\frac{1}{2}$ " MT outlets	<b>1002281</b>	1	31.70
4 port $\frac{3}{4}$ " x $\frac{1}{2}$ " MT outlets	<b>1002282</b>	1	44.11
2 port 1" x $\frac{3}{4}$ " MT outlets ( $\frac{3}{4}$ Eurocone)	<b>1002284</b>	1	23.66
3 port 1" x $\frac{3}{4}$ " MT outlets ( $\frac{3}{4}$ Eurocone)	<b>1002285</b>	1	36.26
4 port 1" x $\frac{3}{4}$ " MT outlets ( $\frac{3}{4}$ Eurocone)	<b>1002286</b>	1	45.72

## UNI-C Manifold without valves, P



Supplied as a single manifold. Made of plated brass, with 1" MT x 1" FT with  $\frac{1}{2}$ " MT outlets. Order adapters separately for connection to Uponor pipe (MLC/SAC/Q&E). Manifolds can be joined to make the required number of ports.

Description	Code	Qty	Price each
2 port 1" x $\frac{1}{2}$ " MT outlets	<b>1014107</b>	1	20.87
3 port 1" x $\frac{1}{2}$ " MT outlets	<b>1014111</b>	1	29.61
4 port 1" x $\frac{1}{2}$ " MT outlets	<b>1014109</b>	1	37.15

## UNI-C Manifold adapter for MLC & SAC



Made of plated brass. For use with UNI-C manifold L/P.

Description	Code	Qty	Price each
12x $\frac{1}{2}$ " FT	<b>1013831</b>	1	5.93
14x $\frac{1}{2}$ " FT <b>NEW</b>	<b>1058085</b>	1	4.36
16x $\frac{1}{2}$ " FT	<b>1058086</b>	1	4.05
20x $\frac{1}{2}$ " FT	<b>1058088</b>	1	7.60

## UNI-C Manifold adapter for Q&E



Made of plated brass. For use with UNI-C manifold L/P.

Description	Code	Qty	Price each
16x $\frac{1}{2}$ " FT	<b>1059510</b>	10	4.52

# Manifolds & Accessories



## UNI-C Manifold cap (with sealing washer)



Made of plated brass, for use with Manifold P.

Description	Code	Qty	Price each
½" FT	1014120	20	3.66
1" FT	1014121	20	6.05

## UNI-C Manifold end cap



Made of plated brass, for use with UNI-C manifold L/P.

Description	Code	Qty	Price each
¾" FT	1002275	1	3.07
1" FT	1002276	1	3.06

## UNI-C Manifold end plug



Made of plated brass, with sealing o-ring.

Description	Code	Qty	Price each
¾" MT	1002273	1	4.68
1" MT	1002274	10	4.68

## UNI-C Manifold ball valve



Made of plated brass. Used to isolate the whole manifold assembly.

Description	Code	Qty	Price each
¾" MT x ¾" FT Supplied as a single valve.	1002279	1	27.15
1" FT x 1" MT Supplied in pairs.	1059132	2	35.31

## Uni-C Manifold Bracket, L or P



Made of galvanized steel, for the attachment of the manifolds L and P.  
Price refers to a pack of two guides.

Description	Code	Qty	Price each
¾"/1"	1045451	1	22.35

## UNI-C Manifold bracket, P



Supplied as a single bracket. Made of galvanized steel, for the sound absorbing installation of Manifold P.

Description	Code	Qty	Price each
1"	1014117	1	13.06

# General Plumbing Accessories



## Uni-C compression fittings

Plated compressions fittings for use with 15mm compression adapters – page 34



Description		Code	Qty	Price each
Coupling	NEW	1013894	40	2.61
Elbow	NEW	1013914	20	4.22
Elbow adapter - Rp ½ FT	NEW	1013932	10	4.53
Tap elbow - Rp ½ FT	NEW	1015559	10	7.04

Plumbing, Heating  
& Building Services

## Chromed radiator compression elbow



Plated brass elbow with 15mm plated brass spigot for connecting MLC & SAC to radiators with suitable compression adapters (12mm : 1013813, 16mm : 1013806).

Description	Code	Qty	Price each
15x20mm MT	1002124	10	8.58

## Danfoss connection set



Made of plated brass, male-threaded pressure screw. With insert part and clamp ring, with blue O-ring, suitable for use with female-threaded Danfoss radiator valves.

Description	Code	Qty	Price each
16x½" MT	1013970	20	4.55

# General Plumbing Accessories

## Pipe clips



Pipe clips made of white plastic.

Description	Code	Qty	Price each
15/16mm	<b>1013142</b>	100	0.77
20mm	<b>1013144</b>	50	0.96
22/25mm	<b>1013145</b>	50	1.23
28/32mm	<b>1013146</b>	50	2.39
40mm	<b>1013147</b>	25	2.99

## PEX Pipe bend supports



To provide a right angle bend in PEX pipes and for use on pipe-in-conduit bends.

Description	Code	Qty	Price each
<b>Metal</b>			
15mm/16mm	<b>1009004</b>	10	2.19
20mm	<b>1009233</b>	10	3.28
25mm	<b>1009006</b>	10	4.59
28-34mm	<b>1001231</b>	2	5.50

## Single plugged hook



For the fast attachment of pipes with an outer diameter of up to 32mm.  
Suitable for use on concrete floor.

Description	Code	Qty	Price each
60mm	<b>1013137</b>	50	0.45
80mm	<b>1013138</b>	50	0.45

## Twin plugged hook



For the fast attachment of pipes with an outer diameter of up to 32mm.  
Suitable for use on concrete floor.

Description	Code	Qty	Price each
60mm	<b>1013139</b>	50	0.49
80mm	<b>1013140</b>	50	0.49

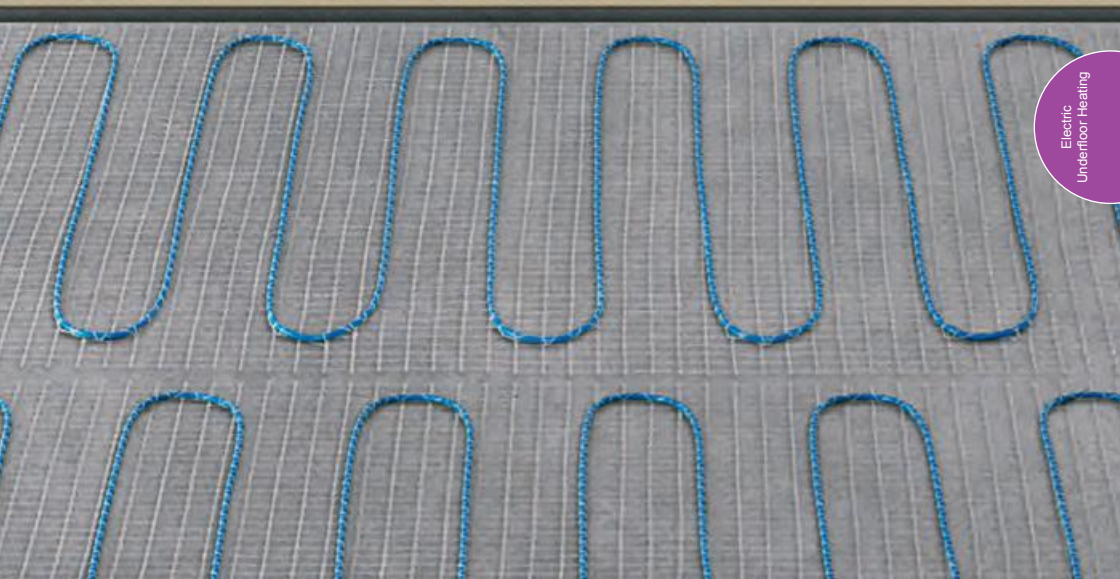
## Snap ring



Clip-on snap ring made of Polypropylene, available in white only.

Description	Code	Qty	Price each
15/16mm	<b>1011370</b>	50	0.41
20mm	<b>1011372</b>	50	0.40

# Uponor Electric UFH Systems



Electric  
Underfloor Heating

Our Comfort E solution is compatible with a range of different floor types, in line with our recommendations.

- Comfort E Step 1  
Choose your mat \_\_\_\_\_ 63
- Comfort E Step 2  
Choose your thermostat \_\_\_\_\_ 64
- Spares \_\_\_\_\_ 64

uponor

# Underfloor heating made easy.

ULTRA-THIN ELECTRIC UNDERFLOOR HEATING



- ✓ Simple to fit
- ✓ Easy to use
- ✓ Fits under vinyl, laminate and tiles

**Comfort** 

Enjoy underfloor heating anywhere

BUILD ON  
**uponor** **100**  
YEARS



We are global experts in underfloor heating and our Comfort E solution can be installed in a matter of minutes. Ideal for new builds and renovation projects.

[www.uponor.co.uk](http://www.uponor.co.uk)



# Uponor Electric UFH Systems

## Comfort E


### Step 1- Choose your mat

#### Comfort E aluminium foil mat



- 140 W/m<sup>2</sup> output
- Double core cable with 3m cold connector
- Heating conductor with FEP electrical insulation
- 2mm profile
- Incl. protection tube for the floor sensor
- IPX7 - CE approved

Electrical radiant heating aluminium mat. Suitable for dry installs including laminate, vinyl and carpet. \*not suitable for wet room installs.


Mat size m <sup>2</sup>	 uPoints	Code	Qty	Pack Price
1m	140	1088684	1	120.44
2m	200	1088685	1	165.76
3m	260	1088686	1	211.49
4m	310	1088687	1	266.53
5m	370	1088688	1	312.25
6m	440	1088689	1	358.01
7m	500	1088690	1	408.61
8m	540	1088691	1	453.92
9m	570	1088692	1	499.65
10m	600	1088693	1	544.97

#### Comfort E cable mat



- 160 W/m<sup>2</sup> output
- 3mm shielded double core cable with 4m cold connector
- Heating conductor with FEP electrical insulation
- Sew-up cable on a self-adhesive carrier mat
- Incl. protection tube for the floor sensor
- IPX7 - CE/VDE approved

Embedded electrical radiant heating mat. Suitable for use under all floor types, tiles in particular.

Mat size m <sup>2</sup>	 uPoints	Code	Qty	Pack Price
1m	140	1088656	1	74.30
1.5m	170	1088657	1	86.01
2m	200	1088658	1	104.64
2.5m	230	1088659	1	143.07
3m	260	1088660	1	143.07
4m	310	1088661	1	206.63
5m	370	1088662	1	236.97
6m	440	1088663	1	295.25
7m	500	1088664	1	362.04
8m	540	1088665	1	408.20
10m	600	1088666	1	450.29
12m	650	1088667	1	487.91

#### Aluminium foil mat insulation



Insulation board to reduce heat loss of the Uponor Comfort E AL-Foil Mat, 5mm folded XPS panels, (0,15m<sup>2</sup>K/W) Board comes in easy to cut 1200 x 800mm sheets.

Description	Code	Qty	Price each
5mm	1088707	5	5.68

#### Benefits:

- 10 year total floor guarantee\*
- Dedicated after sales support
- Ideal for new build and renovation projects

\* Excluding controls

## Step 2- Choose your thermostat

### Thermostat dial set



A simple to use dial thermostat. For use with the Comfort E system (max switching 16 Amps).

Description	Code	Qty	Price each
T-85 230V	<b>1088705</b>	1	71.94

### Thermostat digital programme flush set



The T-86 thermostat is a multi-mode digital thermostat with program functions or standalone thermostat. Flush mounted for a clean finish (max switching 16 Amps).

Description	Code	Qty	Price each
T-86 230V	<b>1088819</b>	1	96.87

## Spares

### Remote floor sensor



Spare remote floor sensor for the Comfort-E range of thermostats. Please ensure the correct sensor is used for your thermostat.

Description	Length	Code	Qty	Price each
T-85 sensor	3m	<b>1090944</b>	1	20.19
T-86 sensor	3m	<b>1047459</b>	1	30.00

### Cable repair kit



Cable repair set for use when the cable has been damaged. Please ensure you follow the enclosed instructions for correct fitting.

Description	Code	Qty	Price each
Repair set	<b>1090942</b>	1	16.59

### Spare protective tube



Spare sensor protective tube for use with the remote sensor to ensure it can be withdrawn in the future.

Description	Code	Qty	Price each
Sensor tube	<b>1090943</b>	1	14.17



uponor

**AUTOBALANCE**  
TECHNOLOGY

Achieve up to a 20% reduction in your heating bills per year by choosing an Uponor system\*

## Save energy, money and time with Uponor

### Underfloor heating controls



### Underfloor heating systems



**Minitec system**



**Solid screed system**



**Siccus system**

To find out more about our range of products,  
please visit [Uponor.co.uk](http://Uponor.co.uk)

\*Cost savings based on a standard unbalanced system

# Uponor Minitec

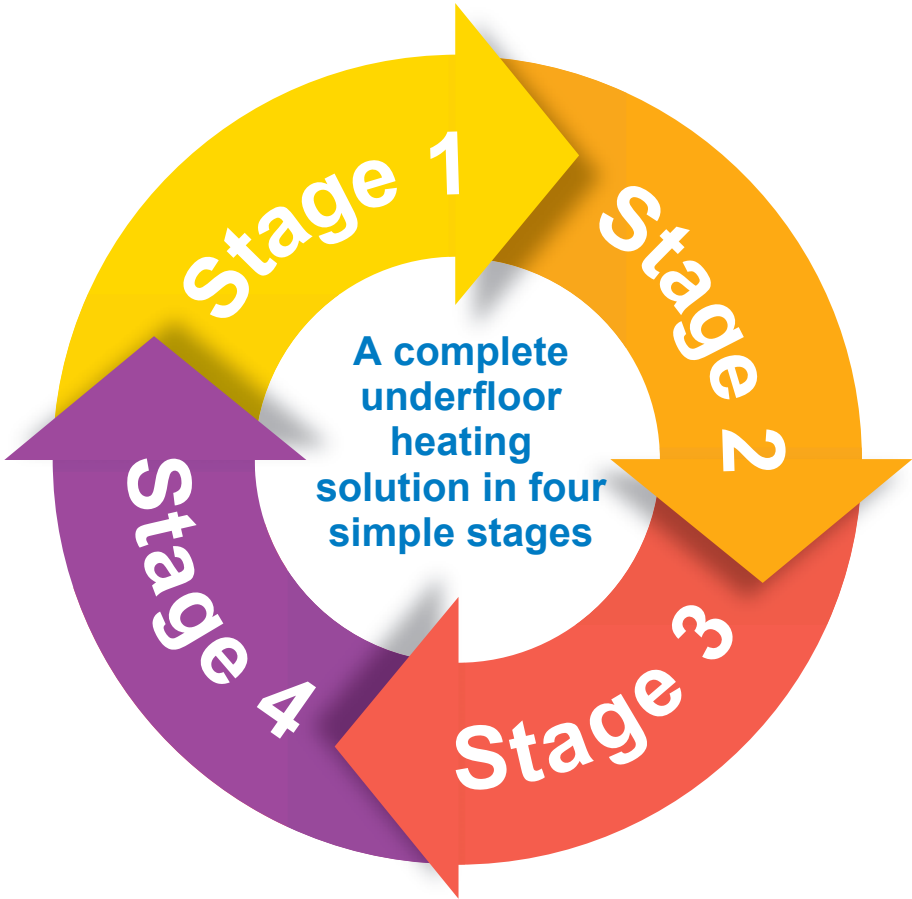
## Underfloor Heating and Cooling



### Your advantages

- 15mm overall build height
- Fast and easy to install
- Bonds directly to the subfloor
- Ensures total pipe encapsulation
- Suitable for total floor area coverage
- New build and renovation projects
- Rapid heat-up times
- Uponor Minitec is compatible with a variety of floor finishes
- Suitable for installation on multiple floor constructions
  - New or existing concrete/screed floors
  - New or existing timber floors
  - Existing tile floors
- High thermal comfort level
- Output > 100W/m<sup>2</sup>
- Ideal partner for renewable technologies

# Underfloor Heating & Cooling



## Domestic and Commercial Underfloor Heating & Cooling Systems.

### Stage 1 - Pipe

- Pipe & Accessories \_\_\_\_\_ 68

### Stage 2 - System

- Uponor Systems \_\_\_\_\_ 70

### Stage 3 - Manifold

- Manifolds & Water Temperature Controls \_\_\_\_\_ 77

### Stage 4 - Controls

- Uponor Underfloor Heating & Cooling Room Controls \_\_\_\_\_ 83

# Uponor Pipe & Accessories


	Renovation Systems		Traditional Systems		
	Minitec page 70	Siccus page 71	Solid Screed page 72	Timber HEPS page 74	Floating page 75
9.9mm PEX	✓				
12mm PEX		✓			
16mm PEX			✓	✓	✓
20mm PEX			✓	✓	✓
16mm MLC			✓	✓	✓

## PEX Pipe

All PEX pipes are manufactured using cross-linked polyethylene (PE-Xa) acc. to BS EN 15875, including an EVOH oxygen diffusion barrier as per DIN 4726 suitable for application class 4 - Underfloor heating and low temperature radiators. Max design pressure 6 Bar at 70°C.


### 9.9mm Minitec Comfort pipe



Description	 uPoints	Code	Qty	Price per/m
9.9x1.1mm		1063287	60m	1.30
9.9x1.1mm	300	1063288	120m	1.30
9.9x1.1mm	600	1063289	240m	1.30
9.9x1.1mm	1200	1063381	480m	1.30


### 12mm Comfort PEX pipe



Description	 uPoints	Code	Qty	Price per/m
12x1.7mm		1063284	60m	2.03
12x1.7mm	300	1063285	120m	2.03
12x1.7mm	300	1063286	240m	2.03

### Comfort Pipe Plus



Description	 uPoints	Code	Qty	Price per/m
16x2mm		1062044	120m	1.25
16x2mm	700	1062045	240m	1.25
16x2mm	2600	1062046	640m	1.25
20x2mm		1009229	60m	2.65
20x2mm	600	1009228	120m	2.65
20x2mm	1000	1009230	240m	2.65
20x2mm	1850	1009231	480m	2.65
25x2.3mm	900	1062888	220m	2.96
25x2.3mm	1200	1062889	300m	2.96



## SAC Pipe

All SAC pipes are manufactured as a 5 layer construction using a raised temperature polyethylene with a seamless aluminium diffusion layer (PERT-AL-PERT) acc. to BS EN 21003, suitable for application class 4 - Underfloor heating and low temperature radiators. Max design pressure 6 Bar at 70°C. Thanks to the new seamless technology, bend radii are up to 40% less than standard MLC.

### 16mm SAC pipe



Description	Code	Qty	Price per/m
16x2mm	<b>1096008</b>	50m	2.23
16x2mm	<b>1059576</b>	100m	2.23
16x2mm	<b>1092653</b>	120m	2.23
16x2mm	<b>1059577</b>	200m	2.23
16x2mm	<b>1059578</b>	500m	2.23

## Pipe Accessories

### Pipe conduit



Made of high-density polyethylene. Supplied in coils. Details and prices of a wide range of other sizes of conduit are available on p.13. First number shown in description refers to I.D. of the protective tube. The second is the size of pipe suitable. N.B. Does not include pipe.

Description	Code	Qty	Price per/m
23 Black (16mm)	<b>1012864</b>	50m	1.62

### Pipe bend supports (metal)



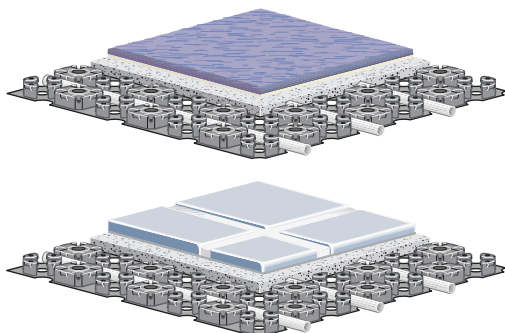
Bend supports are used where the PEX pipe is returning up from the floor towards the manifold. This creates a stable 90° bend making it easier for the installer to connect to the manifold.

Description	Code	Qty	Price each
9.9mm/12mm	<b>1033974</b>	10	1.46
16mm	<b>1009004</b>	10	2.19
20mm	<b>1009233</b>	10	3.28

# Uponor Systems

## Minitec System

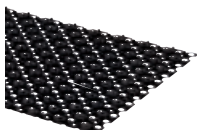
Stage 2 - System



### Benefits:

- Panel size: 1120 x 720mm
- Total panel height: 12mm
- Pipe dimensions: 9.9 x 1.1mm
- Suitable for Uponor PE-Xa pipes
- Diagonal pipe fixture for installation at 90° and 45° angles
- Only 15mm build height including the screed

### Minitec panel



Castellated pipe positioning panel for use on Minitec systems only. Incorporates a self adhesive backing that can be applied direct to suitable structural floors.

Description	Code	Qty	Pack Price
6.2m <sup>2</sup> pack (8 panels)	1083866	1	116.09

### Minitec edging strip

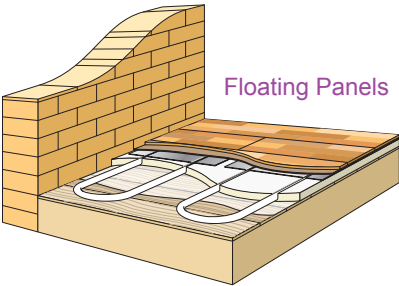


For use on Minitec system, to reduce thermal bridging. Made of polyethylene with self adhesive backing and PE skirt providing tight seal between edge strip and insulation. Thermal resistance 0.22m<sup>2</sup>K/W. Supplied in 20m rolls, 80x8mm HxD.

Description	Code	Qty	Price per/m
20m 80x8mm	1005267	20m	0.96



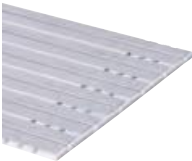
# Siccus 12



## Benefits:

- Can be laid directly on to an existing floor
- Expanded polystyrene provides thermal insulation and improved performance
- Can be easily adapted to suit different size and shaped rooms
- Panels can easily be cut to accommodate additional pipe grooves
- Low profile height

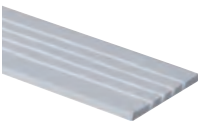
## Siccus 12 floating panel (single)



Grooved polystyrene panel complete with heat emission plates glued to the top surface. Groove centres 125mm. Heat emission plates can be snapped off at the end to reveal turns and two straight grooves for feed/return. Allow approx. 1.2 pcs/m<sup>2</sup>.

Description	Code	Qty	Price each
1200x750x15mm	1034338	10 panels	43.22

## Siccus 12 floating panel (feed/return)



Grooved polystyrene panel for use where multiple feed pipes run to/from the manifold to the heated area. Groove centres 40mm.

Description	Code	Qty	Price each
1200x250x15mm	1034340	10 panels	5.22

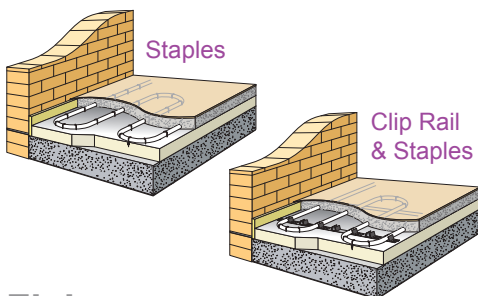
## Siccus 12 heat emission plate



Aluminium metal plates for use with Uponor Siccus 12 feed/return panels. Single track for Uponor 12mm pipe.

Description	Code	Qty	Price each
1180x110mm	1034358	30 plates	2.87

## Solid Screed Systems



### Benefits:

- Secure pipe fixing method
- Can be fixed directly to existing floor grade insulation
- Can accommodate various pipe layouts and spacings
- Low cost fixing system

## Fixings

### Tacker pipe clip standard



Used for fixing 16-20mm pipe to insulation. The barb length is 22mm and requires a minimum of 25mm insulation depth. For use with Uponor Kombi gun 1002295.

Description	Code	Qty	Price each
40mm clip	1086529	1000	0.09

### Tacker pipe clip long



Used for fixing 16-20mm pipe to most types of insulation. The barb length is 33mm and requires a minimum of 35mm insulation depth. For use with Uponor Kombi gun 1002295.

Description	Code	Qty	Price each
55mm clip	1086530	300	0.16

### Fix clamp track nail



Used to hold Fix Clamp Track 16-20 in position or to provide additional fixing where required. Length 65mm.

Description	Code	Qty	Price each
65mm	1005291	500	0.16

## Fix clamp track 16–20



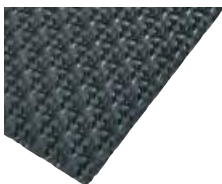
Self-adhesive universal clip rail made of PP, for Uponor pipes, 16mm to 20mm. Can be combined in any length, suitable for cutting to size. May be used with Fix Clamp track nail 1005291 for a more secure fastening to your insulation. Allow 1m/2m<sup>2</sup>.

Length of track: 1m. Width of track: 50mm.


Space between pipe holders: 50mm.

Description	Code	Qty	Price each
16-20mm	<b>1000018</b>	100m	3.90

## Pipe positioning panel 16



Castellated pipe positioning panel, designed to simplify the installation of 16mm pipes. For installation over suitable floor grade insulation. Dimensions of each panel 1447mm(L) x 900mm (W) x 18mm (H). Each pack covers 10m<sup>2</sup>. Pipe spacing increments of 55mm/110mm/165mm/220mm/275mm/330mm

Description	 uPoints	Code	Qty	Price per/m <sup>2</sup>
Pipe positioning plate	100	<b>1016703</b>	10m <sup>2</sup>	12.50

## Insulation

### Multi-foil



Multi-layer reflective insulating foil with printed grid pattern. Designed for use directly above standard floor grade insulation to provide a protective layer and improve heat insulation and distribution into a heated screed. Supplied in 60m x 1m rolls. Thermal resistance 0.09m<sup>2</sup>K/W.

Description	Code	Qty	Price per/m <sup>2</sup>
4mm foil insulation	<b>1000017</b>	60m <sup>2</sup>	6.26

### Multi edging strip

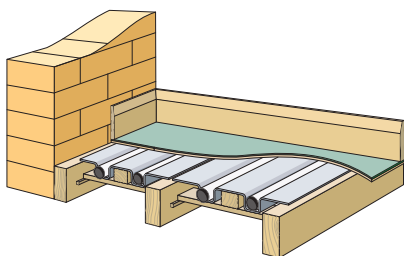


For use on solid screed floors as perimeter wall insulation, to reduce thermal bridging. Made of polyethylene with self adhesive backing and PE skirt providing tight seal between edge strip and insulation. Thermal resistance 0.22m<sup>2</sup>K/W. Supplied in 50m rolls, 150mm (H) x10mm (D).

Description	Code	Qty	Price per/m
50m Roll	<b>1000080</b>	50m	1.17



# Uponor Timber Floor Systems




## Benefits:

- Can be laid directly on to existing traditional joists
- Direct contact between plate and floor covering provides an efficient and highly responsive method of heat transfer
- Options available for different joist pitches and sprung floor systems

## Siccus 16 double heat emission plate



For use with timber suspended floors, with joists at 400mm centres. Double track for Uponor 16mm pipe at 200mm centres. Plate dimension 1150 x 380mm. Each pack of 28 plates covers 15m<sup>2</sup> (based on 80% floor coverage).

Description	 uPoints	Code	Qty	Price each
U 16 HEP400	700	1034365	28 plates	12.78

## Siccus 20 heat emission plate HEP300




For use with timber suspended floors, with joists at 300mm centres or floating floor panels. Single track for Uponor Comfort Pipe Plus (PEX20) at 300mm centres. Plate dimensions 1150 x 280mm. Each pack of 40 plates covers 16m<sup>2</sup> (based on 80% floor coverage).

Description	Code	Qty	Price each
PEX 20 HEP300	1009132	40 plates	9.67

## Siccus 20 heat emission plate HEP411

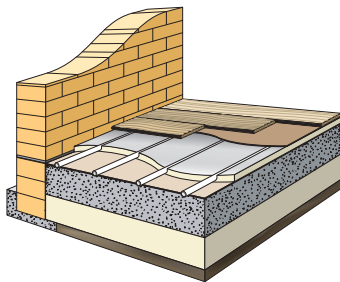


For Junckers sprung floor battens spaced at 411mm centres. Double track for Comfort Pipe Plus (PEX20) at 205mm centres. Plate dimension 1150 x 405mm. Each pack of 20 plates covers 12.3m<sup>2</sup> (based on 80% floor coverage).

Description	 uPoints	Code	Qty	Price each
PEX 20 HEP411	650	1034491	20 plates	17.52

# Uponor Floating Floor Systems

## Siccus FX System



### Benefits:

- 'All in One' panel design
- Pre-formed 16mm pipe grooves
- Bonded heavy duty aluminium foil
- 30mm thick EPS200 panel
- 100% emitter floor coverage area
- Dry trade only installation
- Ideal for renovation and new build projects

## Siccus FX Panel



Grooved polystyrene insulation panel with prefabricated and applied aluminium heat conductive layer for 16mm Uponor underfloor heating pipes at 200mm centres. Panel dimensions 1200 x 800 x 30mm.  
Material: expanded polystyrene rigid foam acc BS EN 13163  
Application type acc DIN 4180-10: DEO  
Fire classification BS EN 13501: class E  
Compressive strength: 200 kPa  
Thermal resistance: 0.91 m<sup>2</sup> K/W

Description	Panel Size	Code	Qty	Price each
1200 x 800 x 30mm	0.95M <sup>2</sup>	1086316	10	25.10





# Uponor Underfloor Heating Course

Uponor UK offer a 1 day training course for underfloor heating at its Watford HQ.

The course provides a general overview on pipe technology, floor constructions, manifolds and controls.

If you would like to book a place on the course or require further information, please email [marketing.uk@uponor.com](mailto:marketing.uk@uponor.com)

# Uponor UFH & Cooling Manifolds & Water Temperature Controls



Manifold

- 1086538
- 1086539
- 1086540
- 1086541
- 1086542
- 1086543
- 1086544




Pumpset

- 1094185
- 1094185
- 1094185
- 1094185
- 1094185
- 1094185
- 1094185

## Vario S Flowmeter Manifold



Uponor Vario S Flowmeter Manifold is a stainless steel manifold for use in radiant heating systems, where flow needs to be shown. The 3/4" eurocone connectors allow for the connection of all Uponor pipe dimensions (Eurocone adapters P80). Which makes this manifold universal for Uponor underfloor heating systems. Comes complete with fill and drain points, 1" swivel connectors and valve pins for actuator control. (Not suitable for 60°C+ systems)

Description	 uPoints	Code	Qty	Price each
2-PORT	100	1086538	1	119.05
3-PORT	120	1086539	1	144.97
4-PORT	140	1086540	1	168.97
5-PORT	160	1086541	1	199.46
6-PORT	180	1086542	1	226.18
7-PORT	210	1086543	1	258.93
8-PORT	230	1086544	1	285.19
9-PORT	250	1086545	1	327.19
10-PORT	270	1086546	1	356.97
11-PORT	300	1086547	1	392.52
12-PORT	320	1086548	1	421.93
13-PORT		1088864	1	455.74
14-PORT		1088865	1	491.89
15-PORT		1088866	1	526.52
16-PORT		1088867	1	561.92

Stage 3 - Manifold

Underfloor Heating & Cooling

Vario S Lockshield Manifold



Uponor Vario S Lockshield Manifold is a stainless steel manifold for use in radiant heating systems, where balancing is done by a hex key. The 3/4 eurocone connectors allow for the connection of all Uponor pipe dimensions (Eurocone adapters P80). The manifold is universal for all Uponor underfloor heating systems. Comes complete with fill and drain points, 1" swivel connectors and valve pins for actuator control. (Suitable for radiator systems)

Description	Code	Qty	Price each
2-PORT	1088045	1	111.92
3-PORT	1088046	1	134.44
4-PORT	1088047	1	155.02
5-PORT	1088048	1	181.58
6-PORT	1088049	1	205.38
7-PORT	1088050	1	234.25
8-PORT	1088051	1	256.94
9-PORT	1088052	1	292.60
10-PORT	1088053	1	321.09
11-PORT	1088054	1	352.23
12-PORT	1088055	1	377.86
13-PORT	1088868	1	409.95
14-PORT	1088869	1	440.97
15-PORT	1088870	1	471.97
16-PORT	1088871	1	504.38

Vario S Manifold Accessories

Vario 1" Ball Valve



Manifold isolation valves for use with Vario S range. Supplied as a pair.

Description	Code	Qty	Price each
¾" – 1" straight	1086558	1	25.85
¾" – 1" elbow	1086559	1	34.18
1" – 1" straight	1059132	1	35.31


# Commercial and Industrial Manifolds

## Vario PLUS Manifolds




Made of a reinforced glass fibre polyamide body. Its primary use is for underfloor heating and cooling applications as it is less prone to corrosion and condensation. It is available in modules of 1, 3, 4 and 6 loops with corresponding connection sets sold separately. The secondary connectors allow the connection of all Uponor pipe dimensions (Eurocone adapters P80).

### Flowmeter

Description	 uPoints	Code	Qty	Price each
1-PORT	100	1042471	1	38.85
3-PORT	200	1030583	1	105.76
4-PORT	250	1030584	1	138.13
6-PORT	350	1030585	1	202.80

### Lockshield

Description	 uPoints	Code	Qty	Price each
1-PORT	100	1042420	1	32.57
3-PORT	200	1030580	1	86.86
4-PORT	250	1030581	1	112.93
6-PORT	400	1030582	1	165.00

## Vario PLUS Accessories




Vario PLUS termination kits are required to complete the Vario PLUS manifold installation. Both kits contain brackets, end caps and thermometers. In the K1 kit, you also get a bypass valve and in the K2 kit, you also get an automatic air vent.

Description	Code	Qty	Price each
K1 Bypass kit	1009209	1	85.76
K2 Airvent Kit	1046882	1	86.42

## MAGNA Industrial Manifold



Made of a reinforced glass fibre polyamide body. Its primary use is for industrial underfloor heating and cooling applications, as it is less prone to corrosion and condensation. It is available in single port segments for flexible system adaption and can be assembled up to 20 loops. Two variants allow for connection to 25mm Comfort Pipe Plus or other pipes when using eurocone connection (Eurocone adapters P80).

Description	 uPoints	Code	Qty	Price each
25mm connector	100	1045813	1	79.21
Eurocone connector	200	1045814	1	75.09

## MAGNA Accessories



Includes manifold brackets, filling valves, thermometer, manometer, endcaps and primary pipe connectors. **One kit is required per MAGNA manifold.**

Description	Code	Qty	Price each
Manifold Kit	1045815	1	179.19
1½" Ball valves (pair)	1030135	1	106.73

Eurocone compression adapters



For connection of pipes to the Uponor UFH manifold range.

Description	Code	Qty	Price each
9.9x3/4" PEX - 3 piece fitting	1013426	1	5.54
12x3/4" PEX - 2 piece fitting	1065282	1	6.00
16x3/4" PEX - 3 piece fitting	1057441	1	6.85
16x3/4" MLC & SAC - 2 piece fitting (Chrome)	1058090	1	4.54
20x3/4" PEX - 2 piece fitting	1065290	1	5.11

Compression Repair Connector



For the repair of damaged 12, 16, & 20mm pipes. You will need to order 2 x adaptors from above section.

Description	Code	Qty	Price each
12/16/20	1006641	20	5.21

Minitec Compression Coupling



For repair of damaged 9.9mm (Minitec) pipe. Please note to ensure a level finish as this sits higher than the Minitec Panel a channel will be required.

Description	Code	Qty	Price each
9.9-9.9mm	1016690	1	13.15

Minitec Q&E Repair Connector



For repair of damaged 9.9mm (Minitec) pipe, includes 1 x connector and 2 x Q&E rings. \*M12 tool required **1095097** page 112, and expander head **1060702**.

Description	Code	Qty	Price each
9.9x1.1mm	1005264	10	4.82

“Y” Compression Adapter



Compression splitter for use on Push 12 Pumpset. Pipe runs should be of equal length. **Supplied as a pair.**

Description	Code	Qty	Price each
2x9.9x3/4" FT (Minitec)	1016692	1	23.42
2x3/4"x3/4" FT (12, 16, 20)	1005675	1	34.46

# Pump Groups

## Fluvia MPG-UK Mixing Control



Suitable for up to 16kW heating load, this compact, lightweight underfloor thermostatic mixing control, complete with Wilo Para pump, is ideal for local blending and pumping of UFH water. The unit has been designed for direct connection to heating manifolds and is supplied fully assembled with G1" swivel nuts and O ring seals supplied already configured for a L/H installation, but can easily reconfigure for R/H applications. This pump pack consists of two isolating ball valves, red lever flow inlet and blue lever return.

**We recommend to fit a strainer before the mixing valve.**

Description	Code	Qty	Price each
230v	<b>1094185</b>	1	504.41

## 230V Actuator



For motorised water temperature control when used with the Smatrix Move controller. Can be used with Viva 3 port mixing valve range.

Description	Code	Qty	Price each
230V	<b>1002357</b>	1	246.92

## Smatrix Move Controller



UFH water temperature control (supply) with outdoor sensor  
\*Please ensure Uponor actuator is used (1002357).

Description	Code	Qty	Price each
H X-157 wired	<b>1071693</b>	1	247.78

## Viva 3-port Mixing Valve



Made from DZR brass. Rotary shoe valve used to blend the system water to the required temperature.

Description	Code	Qty	Price each
¾"s Kv6.3	<b>1002014</b>	1	113.06
1¼"s Kv18	<b>1002017</b>	1	162.65

## Fluvia T Push 12 Water Temperature Control



Designed to fit directly onto an existing radiator circuit, offering control of room temperature, and flow rate to a single loop of pipe. Serves up to 32m<sup>2</sup> of floor area. Additional Eurocone ¾" compression adapters (2) are required for connection to the loop, depending on which pipe is used. (See page 80)

Description	Code	Qty	Price each
Fluvia Push 12 60°C	<b>1095129</b>	1	485.69



uponor

# Easy fit, smart kit

New Smatrix Pulse room temperature  
control with full smart home connectivity



- ✓ **Easy control:** Intuitive control via the Smatrix Pulse App or your favourite voice assistant
- ✓ **Personal comfort:** Create your ambient comfort zone with individual preferences and adaptive comfort functions
- ✓ **Energy efficiency:** With innovative Autobalancing technology and smart analysis features



[www.uponor.com/smatrix](http://www.uponor.com/smatrix)



# Smatrix PULSE Wired Multi-Zone System

NEW!

## Welcome to Smatrix PULSE – an all-new smart home control system for your heating:

- Offers up to 48 heating control zones, all set up and controlled via an easy to use app.
- Thanks to this advanced control you can now adjust your heating with your voice via the Alexa enabled skills.\*
- No internet? No worries! With the unique way our signals are sent, the unit will make its own network allowing for tethering to the control network when you are local.
- Backward compatible – all existing Smatrix thermostats will work with the new controls.

### Smatrix PULSE controller – wired



6 channel smart wired heating/cooling controller. This provides smart home control and allows for individual area control of up to 6 zones. Also provides central control of heating and cooling equipment.

Description	Code	Qty	Price each
X-245 Wired UK 6X	1093018	1	161.22

### Smatrix PULSE slave module – wired



6 channel module for the addition of 6 extra zones onto the main Smatrix PULSE wired controller.

Description	Code	Qty	Price each
M-242 Wired 6X	1093134	1	52.41

### Smatrix PULSE module



The Smatrix PULSE module forms part of the interface between your local controls and the cloud network to allow for the full app and voice control of your system.

This is highly recommended to unlock all features of the system.

**Good and reliable signal is required for the app control.**

Description	Code	Qty	Price each
R-208 PULSE Module	1093030	1	349.70

For all wired thermostats and accessories please see pages 85-86

Stage 4 - Controls


Heating & Cooling  
Room Controls

# Smatrix Base - Multi-Zone Wired

## Smatrix Base PRO controller




A wired radiant heating/cooling controller. The controller sends and receives data to and from the room thermostats and sensors to control thermal actuators and other heating/cooling equipment. Can be added to Smatrix Base PRO interface to expand the system to up to 16 controllers depending on specific installation size.

Description	 uPoints	Code	Qty	Price each
X-147 UK 6X	300	1087417	1	261.02

## Smatrix Base PRO controller and interface



A wired radiant heating/cooling controller and interface set. The controller sends and receives data to and from the room thermostats and sensors to control thermal actuators and other heating/cooling equipment. Also included is the I-147 interface allowing for the control of up to 16 controllers depending on specific installation size. **Please note Uponor App control is not available.**

Description	 uPoints	Code	Qty	Price each
X-147 + I-147 UK	700	1087418	1	567.49
Spare I-147 interface		1087161	1	292.12

## Smatrix Base slave module



A 6 channel controller slave module M-140. The controller slave can be added to a Smatrix Base or Smatrix Base PRO controller, to expand the available channels (6) and actuator outputs (6).

Description	Code	Qty	Price each
M-140 BUS 6X	1071686	1	55.57

## Smatrx Base dial thermostat



A wired dial single room temperature sensor. It measures the perceived room temperature and transmits the values to the wired controller.

Description	Code	Qty	Price each
T-145 BUS POD	<b>1086975</b>	1	30.13

## Smatrx Base public thermostat



A wired room thermostat for tamper proof locations. In addition, different sensor functions can be set via dip switches such as a floor sensor, a remote sensor or/and outdoor sensor.

Description	Code	Qty	Price each
T-143 BUS	<b>1086972</b>	1	30.13

## Smatrx Base digital thermostat




A wired digital thermostat with large backlit display. It measures and displays the room temperature, transmitting the values to the wired controller.

Description	Code	Qty	Price each
T-146 BUS	<b>1086976</b>	1	50.62

## Smatrx Base programmable thermostat



A wired digital programmable thermostat with Rh sensor and large backlit display. It measures/displays the room temperature and Rh, then transmits the values to the Smatrix Base controller.

Description	 uPoints	Code	Qty	Price each
+RH T-148 BUS	100	<b>1086977</b>	1	62.96

## Smatrx Base Style digital thermostat



A wired digital thermostat with Rh sensor and E Ink display. It measures/displays the room temperature and Rh, then transmits the values to the Smatrix PULSE or Base PRO controller.

Description	Code	Qty	Price each
T-149 White	<b>1087813</b>	1	104.47
T-149 Black	<b>1087814</b>	1	115.04

## Smatrx Base Style sensor



A wired, discreet sensor for use with the Smatrix PULSE or Base PRO system. It measures room temperature and sends the information to the PULSE module or Base PRO interface.

Description	Code	Qty	Price each
T-141	<b>1087812</b>	1	53.92

# Smatrix Base - Multi-Zone Wired

## Smatrix floor sensor



The Smatrix floor sensor can be combined with selected Smatrix room thermostats.

Description	Code	Qty	Price each
S-1XX	<b>1071684</b>	1	9.14

## Smatrix Base bus cable



A 4 core Smatrix bus cable, individually shielded for interference protection.

Description	Code	Qty	Price each
A-145 50M	<b>1071670</b>	1	133.63

## Smatrix wall frame



The Smatrix wall frame for all Smatrix thermostats.

Description	Code	Qty	Price each
T-X A-1XX	<b>1086986</b>	1	3.31

## Smatrix Style adaptor



For installing the Smatrix Style thermostat onto a solid wall.

Description	Code	Qty	Price each
A-14X White	<b>1087821</b>	1	4.41
A-14X Black	<b>1087822</b>	1	4.31

## Smatrix relay module



A relay module used as an interface between a Uponor Smatrix control system and a heating/cooling source for switching between heating and cooling automatically.

Description	Code	Qty	Price each
H/C M-1XX 24V	<b>1083576</b>	1	57.58
H/C M-1XX 230V	<b>1083577</b>	1	86.96

## Thermal actuator



Suitable for use with the full Uponor manifold range. Includes open/closed indicator with pre-opened function for ease of install. Please ensure you select the correct actuator for your manifold.

Description	New Code	Qty	Price each
24V for Vario S Manifolds	<b>1013008</b>	1	29.39
24V for Magna & Vario Plus Manifolds	<b>1000138</b>	1	35.47

# Smatrix PULSE Wireless Multi-Zone System

NEW!

## Welcome to Smatrix PULSE – an all-new smart home control system for your heating:

- Offers up to 48 heating control zones, all set up and controlled via an easy to use app.
- Thanks to this advanced control you can now adjust your heating with your voice via the Alexa and Google Home enabled skills.\*
- No internet? No worries! With the unique way our signals are sent, the unit will make its own network allowing for tethering to the control network when you are local.
- Backward compatible – all existing Smatrix thermostats will work with the new controls.

### Smatrix PULSE controller – wireless



6 channel smart wireless heating/cooling controller. This provides smart home control and allows for individual area control of up to 6 zones. Also provides central control of heating and cooling equipment.

Description	Code	Qty	Price each
X-265 Wireless UK 6X	<b>1093022</b>	1	249.53

### Smatrix PULSE slave module – wireless



6 channel module for the addition of 6 extra zones onto the main Smatrix PULSE wireless controller.

Description	Code	Qty	Price each
M-262 Wireless 6X	<b>1093133</b>	1	72.03

### Smatrix PULSE module



The Smatrix PULSE module forms part of the interface between your local controls and the cloud network to allow for the full app and voice control of your system.

This is highly recommended to unlock all features of the system.

**Good and reliable signal is required for the app control.**

Description	Code	Qty	Price each
R-208 PULSE Module	<b>1093030</b>	1	349.70

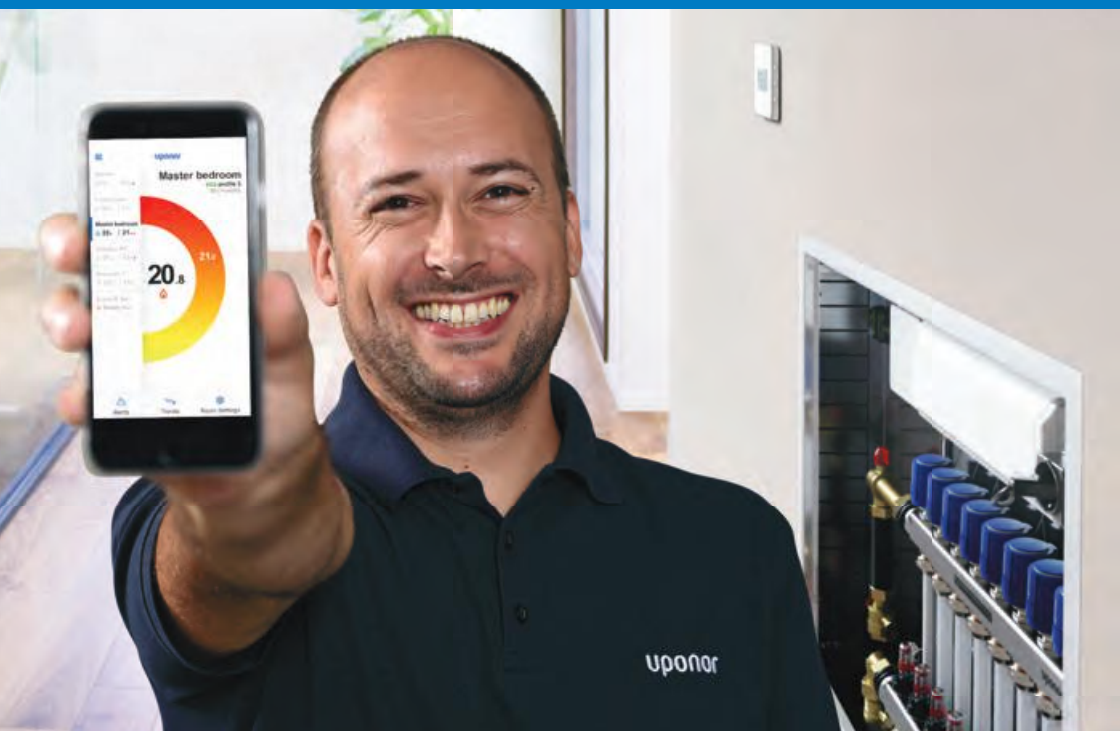
For all wireless thermostats and accessories please see pages 89-90

Stage 4 - Controls

Heating & Cooling  
Room Controls

# NEW Uponor UFH Small Area Packs

Available Packs up to 70sq/m  
Screed - Timber - Minitec versions all with  
Smatrix WAVE Pulse controls



Send your design to [ENQUIRIES.UK@UPONOR.COM](mailto:ENQUIRIES.UK@UPONOR.COM)  
or contact local Uponor Technical Sales Manager  
[www.uponor.com/smatrix](http://www.uponor.com/smatrix)

# Smatrix Wave - Multi-Zone Radio

## Smatrix Wave dial thermostat



A wireless dial single room temperature sensor. It measures the perceived room temperature, transmitting the values to the wireless control unit.

Description	Code	Qty	Price each
Standard T-165 POD	1086981	1	49.23

## Smatrix Wave public thermostat



A wireless single room temperature sensor for public buildings. In addition, different sensors functions such as a floor sensor, a remote sensor or outdoor sensor can be set via dip switch. It measures the perceived temperature and transmits the values to the wireless controller.

Description	Code	Qty	Price each
T-163	1086979	1	47.81

## Smatrix Wave digital thermostat



A wireless digital thermostat with large backlit display. It measures and displays the room temperature, transmitting the values to the wireless controller.

Description	Code	Qty	Price each
T-166	1086982	1	69.41

## Smatrix Wave Style thermostat



A stylish wireless digital thermostat with Rh sensor and E Ink display. It measures/ displays the room temperature and Rh, and subsequently transmits the values to the Smatrix wireless controller.

Description	uPoints	Code	Qty	Price each
T-169 White	100	1087816	1	111.50
T-169 Black	100	1087817	1	116.02

## Smatrix Wave programmable thermostat



A wireless digital programmable thermostat with Rh sensor and large backlit display. It measures and displays the room temperature and Rh, and subsequently transmits the values to the wireless controller.

Description	New code	Qty	Price each
+RH T-168	1086984	1	80.50



### Smatrx Wave Style room sensor



Discreet wireless sensor for use with the Smatrx Wave system. It measures room temperature and sends the information to the Smatrx App control.

Description	uPoints	Code	Qty	Price each
T-161	100	<b>1087815</b>	1	62.56

### Smatrx wall frame



The Smatrx wall frame for Smatrx thermostats.

Description	New code	Qty	Price each
T-X A-1XX	<b>1086986</b>	1	3.31

### Smatrx sensor floor/remote



The Smatrx floor/remote sensor can be combined with selected room thermostats out of the Smatrx Base, Smatrx Wave portfolio.

Description	Code	Qty	Price each
S-1XX	<b>1071684</b>	1	9.14

### Smatrx Wave relay module



A wireless dual output receiver which can be used to switch different devices on or off. In addition it can be used for a wireless H/C switch over between the Smatrx room control system and the supply water controller or heat source.

Description	Code	Qty	Price each
M-161 2X	<b>1071658</b>	1	75.43

### Smatrx relay module



A relay module used as interface between a Smatrx control system and a heating/cooling source for switching between heating and cooling automatically.

Description	Code	Qty	Price each
H/C M-1XX 24V	<b>1083576</b>	1	57.58
H/C M-1XX 230V	<b>1083577</b>	1	86.96

### Thermal actuator



Suitable for use with the full Uponor manifold range. Includes open/closed indicator with pre-opened function for ease of install. Please ensure you select the correct actuator for your manifold.

Description	New Code	Qty	Price each
24V for Vario S Manifolds	<b>1013008</b>	1	29.39
24V for Magna & Vario Plus Manifolds	<b>1000138</b>	1	35.47

# YOUR EASY TO FIT SMART KIT



## Uponor Smatrix PULSE Starter Sets

All the benefits of the new Smatrix PULSE system is now in a handy kit. Available in two sizes it allows for easy picking of a complete smart home control system whilst giving a cost saving on individual items.

### Wired Starter Set S

1 x Uponor Smatrix PULSE Module  
1 x Uponor Smatrix PULSE Controller  
3 x Uponor Smatrix Style Thermostat

1093281    £741.89    Saving 10%

### Wired Starter Set L

1 x Uponor Smatrix PULSE Module  
2 x Uponor Smatrix PULSE Controller  
5 x Uponor Smatrix Style Thermostat

1093283    £1075.04    Saving 10%

### Wireless Starter Set S

1 x Uponor Smatrix PULSE Module  
1 x Uponor Smatrix PULSE Controller  
3 x Uponor Smatrix Style Thermostat

1093285    £840.34    Saving 10%

### Wireless Starter Set L

1 x Uponor Smatrix PULSE Module  
2 x Uponor Smatrix PULSE Controller  
5 x Uponor Smatrix Style Thermostat

1093288    £1263.76    Saving 10%

\*Savings based on purchase of individual items.

# Wired 230V Controls & Accessories

## Wired 230V wiring centre



Controls up to 8 room stats and 16 manifold actuators. Includes two volt free relays for pump and boiler control. Night setback facility when used with remote time clock.

Description	Code	Qty	Price each
White 230V	1047456	1	183.74

## Wired 230V digital programmable thermostat



Modern slim design, only 13mm depth after installation. Energy saving feature calculates heat up time of system. Includes holiday mode, temporary over-ride and specified duration, 5/2 or 7 day programme, floor temperature control, lock facility, status display on current thermostat mode (requires 35mm electrical back box).

Description	Code	Qty	Price each
T-26	1058425	1	89.34

## Wired 230V remote sensor



Optional 3m long sensor for control and regulation of remote temperature.

Description	Code	Qty	Price each
3m	1047459	1	30.00

## Thermal actuator



Suitable for use with the full Uponor manifold range. Includes open/closed indicator with pre-opened function for ease of install. Please ensure you select the correct actuator for your manifold.

Description	New Code	Qty	Price each
230V for Vario S Manifolds	1013006	1	33.00
230V for Magna & Vario Plus Manifolds	1005605	1	35.47

## Wired 230V junction box



12 way junction box.

Description	Code	Qty	Price each
White	1002130	1	19.65

## Viva Motorised 2 port zone valve



230V power open/spring return zone valve, complete with auxiliary switch.

Description	Code	Qty	Price each
230V	1002047	1	120.78

# Ecoflex (Pre-insulated) Pipe System



## Ecoflex Thermo PRO

Over 30 years service life, designed especially for heating water (Thermo & Thermo PRO), hot tap water (Aqua), cooling water and potable cold water (Supra). Applications for district heating and cooling, remote boilers, biomass, CHP and industrial fluids. High flexibility, no special tools required and available 'cut-to-length.'

Ecoflex  
(Pre-insulated) Pipe

• Ecoflex Pipe Selector _____	94	• Wipex fittings _____	100
• Ecoflex Pipe _____	96	• Ecoflex Accessories _____	103
• Ecoflex End Caps _____	99		

# Pipe and Fitting Selector Tool

To help you select the correct fittings needed for each type of Uponor pipe

		Stage 1		Stage 2		Stage 3	
		Pick your application pipe and length...		Pick your end cap, one for each end...		Pick your coupler... (quantity per pipe end)	
Thermo Single	Pipe and length	Rubber end-cap		Quantity		WIPEX Coupling, 6 bar	Quantity
	1018109 25/140	<input type="checkbox"/>	1018315 25+32/140	1	<input type="checkbox"/>	1018328 25x1" 6bar	1 <input type="checkbox"/>
	1018110 32/140	<input type="checkbox"/>	1018315 25+32/140	1	<input type="checkbox"/>	1018329 32x1" 6bar	1 <input type="checkbox"/>
	1018111 40/175	<input type="checkbox"/>	1018313 32+40+50/175	1	<input type="checkbox"/>	1018330 40x1¼" 6bar	1 <input type="checkbox"/>
	1018112 50/175	<input type="checkbox"/>	1018313 32+40+50/175	1	<input type="checkbox"/>	1018331 50x1¼" 6bar	1 <input type="checkbox"/>
	1018113 63/175	<input type="checkbox"/>	1018312 63+75/175	1	<input type="checkbox"/>	1018332 63x2" 6bar	1 <input type="checkbox"/>
	1018114 75/200	<input type="checkbox"/>	1018310 75+90+110/200	1	<input type="checkbox"/>	1018333 75x2" 6bar	1 <input type="checkbox"/>
	1018115 90/200	<input type="checkbox"/>	1018310 75+90+110/200	1	<input type="checkbox"/>	1018334 90x3" 6bar	1 <input type="checkbox"/>
	1018116 110/200	<input type="checkbox"/>	1018310 75+90+110/200	1	<input type="checkbox"/>	1018335 110x3" 6bar	1 <input type="checkbox"/>
	1083868 125/250	<input type="checkbox"/>	1083869 125/250	1	<input type="checkbox"/>	1078368 125x4" 6bar	1 <input type="checkbox"/>
Thermo Twin	Pipe and length	Rubber end-cap		Quantity		WIPEX Coupling, 6 bar	Quantity
	1018134 2x25/175	<input type="checkbox"/>	1018309 2x 25+32+40/175	1	<input type="checkbox"/>	1018328 2x1" 6bar	2 <input type="checkbox"/>
	1018135 2x32/175	<input type="checkbox"/>	1018309 2x 25+32+40/175	1	<input type="checkbox"/>	1018329 32x1" 6bar	2 <input type="checkbox"/>
	1018136 2x40/175	<input type="checkbox"/>	1018309 2x 25+32+40/175	1	<input type="checkbox"/>	1018330 40x1¼" 6bar	2 <input type="checkbox"/>
	1018137 2x50/200	<input type="checkbox"/>	1018307 2x 40+50+63/200	1	<input type="checkbox"/>	1018331 50x1¼" 6bar	2 <input type="checkbox"/>
	1018138 2x63/200	<input type="checkbox"/>	1018307 2x 40+50+63/200	1	<input type="checkbox"/>	1018332 63x2" 6bar	2 <input type="checkbox"/>
	1088276 2x75/250	<input type="checkbox"/>	1088979 2x75+90/250	1	<input type="checkbox"/>	1018333 75x2" 6bar	2 <input type="checkbox"/>
Thermo Mini	Pipe and length	Rubber end-cap		Quantity		WIPEX Coupling, 6 bar	Quantity
	1018132 25/68	<input type="checkbox"/>	1018316 25+32/68	1	<input type="checkbox"/>	1018328 25x1" 6bar	1 <input type="checkbox"/>
	1018133 32/68	<input type="checkbox"/>	1018316 25+32/68	1	<input type="checkbox"/>	1018329 32x1" 6bar	1 <input type="checkbox"/>
Thermo PRO Single	Pipe and length	Rubber end-cap		Quantity		WIPEX Coupling, 6 bar	Quantity
	1087379 40/175	<input type="checkbox"/>	1018313 32+40+50/175	1	<input type="checkbox"/>	1018330 40x1¼" 6bar	1 <input type="checkbox"/>
	1087384 50/175	<input type="checkbox"/>	1018313 32+40+50/175	1	<input type="checkbox"/>	1018331 50x1¼" 6bar	1 <input type="checkbox"/>
	1087386 63/200	<input type="checkbox"/>	1086685 50+63/200	1	<input type="checkbox"/>	1018332 63x2" 6bar	1 <input type="checkbox"/>
	1087388 75/200	<input type="checkbox"/>	1018310 75+90+110/200	1	<input type="checkbox"/>	1018333 75x2" 6bar	1 <input type="checkbox"/>
	1087389 90/200	<input type="checkbox"/>	1018310 75+90+110/200	1	<input type="checkbox"/>	1018334 90x3" 6bar	1 <input type="checkbox"/>
	1087390 110/200	<input type="checkbox"/>	1018310 75+90+110/200	1	<input type="checkbox"/>	1018335 110x3" 6bar	1 <input type="checkbox"/>
Thermo PRO Twin	Pipe and length	Rubber end-cap		Quantity		WIPEX Coupling, 6 bar	Quantity
	1087393 2x25/175	<input type="checkbox"/>	1018309 2x 25+32+40/175	1	<input type="checkbox"/>	1018328 2x1" 6bar	2 <input type="checkbox"/>
	1087395 2x32/175	<input type="checkbox"/>	1018309 2x 25+32+40/175	1	<input type="checkbox"/>	1018329 32x1" 6bar	2 <input type="checkbox"/>
	1087397 2x40/200	<input type="checkbox"/>	1018307 2x 40+50+63/200	1	<input type="checkbox"/>	1018330 40x1¼" 6bar	2 <input type="checkbox"/>
	1087398 2x50/200	<input type="checkbox"/>	1018307 2x 40+50+63/200	1	<input type="checkbox"/>	1018331 50x1¼" 6bar	2 <input type="checkbox"/>
	1087399 2x63/200	<input type="checkbox"/>	1018307 2x 40+50+63/200	1	<input type="checkbox"/>	1018332 63x2" 6bar	2 <input type="checkbox"/>

Stage 1		Stage 2		Stage 3	
Pick your application pipe and length...		Pick your end cap, one for each end...		Pick your coupler... (quantity per pipe end)	
Thermo HP	Pipe and length	Rubber end-cap	Quantity	WIPEX Coupling	
	1093894 2x32+2x32/140 <input type="checkbox"/>	1086838 140 Thermo HP 1 <input type="checkbox"/>	1083329 32x1" 6bar 2 <input type="checkbox"/>		
	1093895 2x40+2x32/175 <input type="checkbox"/>	1094252 175 Thermo HP 1 <input type="checkbox"/>	1083330 40x1½" 6bar 2 <input type="checkbox"/>		
Aqua Single	Pipe and length	Rubber end-cap	Quantity	WIPEX Coupling	
	1018117 25/140 <input type="checkbox"/>	1018315 25+32/140 1 <input type="checkbox"/>	1018336 25x1" 10bar 1 <input type="checkbox"/>		
	1018118 32/140 <input type="checkbox"/>	1018315 25+32/140 1 <input type="checkbox"/>	1018338 32x1" 10bar 1 <input type="checkbox"/>		
	1018119 40/175 <input type="checkbox"/>	1018313 32+40+50/175 1 <input type="checkbox"/>	1018339 40x1½" 10bar 1 <input type="checkbox"/>		
	1018120 50/175 <input type="checkbox"/>	1018313 32+40+50/175 1 <input type="checkbox"/>	1018340 50x1½" 10bar 1 <input type="checkbox"/>		
	1018121 63/175 <input type="checkbox"/>	1018312 63+75/175 1 <input type="checkbox"/>	1018341 63x2" 10bar 1 <input type="checkbox"/>		
	1018122 75/200 <input type="checkbox"/>	1018310 75+90+110/200 1 <input type="checkbox"/>	1018342 70x2" 10bar 1 <input type="checkbox"/>		
	1018123 90/200 <input type="checkbox"/>	1018310 75+90+110/200 1 <input type="checkbox"/>	1018343 90x3" 10bar 1 <input type="checkbox"/>		
	1036036 110/200 <input type="checkbox"/>	1018310 75+90+110/200 1 <input type="checkbox"/>	1023170 110x3" 10bar 1 <input type="checkbox"/>		
Aqua Twin	Pipe and length	Rubber end-cap	Quantity	WIPEX Coupling	Quantity
	1018139 25+25/175 <input type="checkbox"/>	1018309 2x25+32+40/175 1 <input type="checkbox"/>	1018336 25x1" 10bar 2 <input type="checkbox"/>		
	1018140 32+25/175 <input type="checkbox"/>	1018309 2x25+32+40/175 1 <input type="checkbox"/>	1018338 32x1" 10bar 1 <input type="checkbox"/>		
			1018336 25x1" 10bar 1 <input type="checkbox"/>		
	1018141 40+25/175 <input type="checkbox"/>	1018309 2x25+32+40/175 1 <input type="checkbox"/>	1018339 40x1½" 10bar 1 <input type="checkbox"/>		
			1018336 25x1" 10bar 1 <input type="checkbox"/>		
	1018142 50+25/175 <input type="checkbox"/>	1018308 2x25+32+50/175 1 <input type="checkbox"/>	1018340 50x1½" 10bar 1 <input type="checkbox"/>		
			1018336 25x1" 10bar 1 <input type="checkbox"/>		
Quattro	Pipe and length	Rubber end-cap	Quantity	WIPEX Coupling	Quantity
	1018147 2x25/25+25/175 <input type="checkbox"/>	1018306 175 Quattro 1 <input type="checkbox"/>	1018328 25x1" 6bar 2 <input type="checkbox"/>		
			1018336 25x1" 10bar 2 <input type="checkbox"/>		
	1018148 2x32/25+25/175 <input type="checkbox"/>	1018306 175 Quattro 1 <input type="checkbox"/>	1018329 32x1" 6bar 2 <input type="checkbox"/>		
			1018336 25x1" 10bar 2 <input type="checkbox"/>		
			1018329 32x1" 6bar 2 <input type="checkbox"/>		
	1018149 2x32/32+25/175 <input type="checkbox"/>	1018306 175 Quattro 1 <input type="checkbox"/>	1018338 32x1" 10bar 1 <input type="checkbox"/>		
			1018336 25x1" 10bar 1 <input type="checkbox"/>		
Supra / Supra +	Pipe and length	Rubber end-cap	Quantity	WIPEX Coupling	Quantity
	1095722 25/68 <input type="checkbox"/>	1018316 25+32/68 1 <input type="checkbox"/>	1018328 25x1" 1 <input type="checkbox"/>		
	1095723 32/68 <input type="checkbox"/>	1018316 25+32/68 1 <input type="checkbox"/>	1018329 32x1" 1 <input type="checkbox"/>		
	1095724 40/140 <input type="checkbox"/>	1018314 40+50+63/140 1 <input type="checkbox"/>	1018330 40x1½" 1 <input type="checkbox"/>		
	1095725 50/140 <input type="checkbox"/>	1018314 40+50+63/140 1 <input type="checkbox"/>	1018331 50x1½" 1 <input type="checkbox"/>		
	1095726 63/140 <input type="checkbox"/>	1018314 40+50+63/140 1 <input type="checkbox"/>	1018332 63x2" 1 <input type="checkbox"/>		
	1095727 75/175 <input type="checkbox"/>	1018312 63+75/175 1 <input type="checkbox"/>	1018333 75x2" 1 <input type="checkbox"/>		
	1095728 90/175 <input type="checkbox"/>	1018311 90+110/175 1 <input type="checkbox"/>	1018334 90x3" 1 <input type="checkbox"/>		
	1095729 110/200 <input type="checkbox"/>	1018310 75+90+110/200 1 <input type="checkbox"/>	1018335 110x3" 1 <input type="checkbox"/>		

Please note: All items sold individually unless specified

Contact us on 01923 927000 - enquiries.uk@uponor.com | 95




# Uponor Ecoflex (Pre-insulated) Pipe

## Ecoflex Thermo Mini & Single




Ecoflex Single pipe PEX, max. 6 bar / 80°C LTHW. **Use Wipex 6 bar coupling.**

Description	 uPoints	Code	Qty*	Price per/m
25/68 Mini	1200 per 10m	<b>1018132</b>	200	29.65
32/68 Mini	1200 per 10m	<b>1018133</b>	200	34.37
25/140 Single	1200 per 10m	<b>1018109</b>	200	41.77
32/140 Single	1200 per 10m	<b>1018110</b>	200	45.37
40/175 Single	1200 per 10m	<b>1018111</b>	200	59.50
50/175 Single	1200 per 10m	<b>1018112</b>	200	63.70
63/175 Single	1200 per 10m	<b>1018113</b>	200	72.18
75/200 Single	1200 per 10m	<b>1018114</b>	100	98.33
90/200 Single	1200 per 10m	<b>1018115</b>	100	110.62
110/200 Single	1200 per 10m	<b>1018116</b>	100	131.74
125/250 Single	1200 per 10m	<b>1083868</b>	120	160.03

## Ecoflex Thermo Twin




Ecoflex Twin pipe PEX, max. 6 bar / 80°C LTHW. **Use Wipex 6 bar coupling.**

Description	 uPoints	Code	Qty*	Price per/m
2x25/175	1200 per 10m	<b>1018134</b>	200	57.25
2x32/175	1200 per 10m	<b>1018135</b>	200	65.09
2x40/175	1200 per 10m	<b>1018136</b>	200	70.18
2x50/200	1200 per 10m	<b>1018137</b>	100	95.89
2x63/200	1200 per 10m	<b>1018138</b>	100	115.75
2x75/250	1200 per 10m	<b>1088276</b>	100	151.46

## Ecoflex Thermo PRO Single




Thermo PRO Single is suitable for applications where heat loss needs to be at a minimum, but with all the benefits of the existing Thermo system. Other jacket sizes available on request. **Use Wipex 6 bar Coupling.**

Description	 uPoints	Code	Qty*	Price per/m
40/175	1200 per 10m	<b>1087379</b>	150	87.15
50/175	1200 per 10m	<b>1087384</b>	150	90.95
63/200	1200 per 10m	<b>1087386</b>	100	123.17
75/200	1200 per 10m	<b>1087388</b>	100	139.08
90/200	1200 per 10m	<b>1087389</b>	100	153.22
110/200	1200 per 10m	<b>1087390</b>	100	174.67

## Ecoflex Thermo PRO Twin



Thermo PRO Twin is suitable for applications where heat loss needs to be at a minimum, but with all the benefits of the existing Thermo system. Other jacket sizes available on request. **Use Wipex 6 bar Coupling.**

Description	 uPoints	Code	Qty*	Price per/m
2x25/175	1200 per 10m	<b>1087393</b>	150	85.70
2x32/175	1200 per 10m	<b>1087395</b>	150	93.34
2x40/200	1200 per 10m	<b>1087397</b>	100	115.18
2x50/200	1200 per 10m	<b>1087398</b>	100	126.24
2x63/200	1200 per 10m	<b>1087399</b>	100	158.23

\*All quantities available cut to length required



### Ecoflex Thermo HP twin




Ecoflex HP is a specialist pipe designed for connecting an ASHP outdoor unit to the indoor unit. This includes twin PEXa pipe and 32mm double walled conduit for carrying power, sensor cables and heating service in one neat pipe. **Use Wipex 6 bar coupling.**

Description	Code	Qty*	Price per/m
2x32mm+2x32mm/140	<b>1093894</b>	200	50.51
2x40mm+2x32mm/175	<b>1093895</b>	200	61.66

### Ecoflex Aqua Single




Ecoflex Single pipe PEX, max. 10 bar / 70°C DHW. **Use Wipex 10 bar coupling. Sizes 75mm, 90mm and 110mm available on request for large projects.**

Description	 uPoints	Code	Qty*	Price per/m
25/140	1000 per 10m	<b>1018117</b>	200	47.90
32/140	1000 per 10m	<b>1018118</b>	200	53.38
40/175	1000 per 10m	<b>1018119</b>	200	70.85
50/175	1000 per 10m	<b>1018120</b>	200	83.23
63/175	1000 per 10m	<b>1018121</b>	200	95.89
75/200*	1000 per 10m	<b>1018122</b>	100	118.08
90/200*	1000 per 10m	<b>1018123</b>	100	128.37
110/200*	1000 per 10m	<b>1036036</b>	100	158.87

### Ecoflex Aqua Twin




Ecoflex Twin pipe PEX, max. 10 bar / 70°C DHW. **Use Wipex 10 bar coupling.**

Description	 uPoints	Code	Qty*	Price per/m
25+25/175	1000 per 10m	<b>1018139</b>	200	68.06
32+25/175	1000 per 10m	<b>1018140</b>	200	72.10
40+25/175	1000 per 10m	<b>1018141</b>	200	78.76
50+25/175	1000 per 10m	<b>1018142</b>	200	89.32

### Ecoflex Quattro



Ecoflex Quattro pipe PEX, 10 bar / 70°C DHW and 6 bar / 80°C LTHW. (Contains 2 x Thermo Pipes and 2 x Aqua Pipes).

Description	 uPoints	Code	Qty*	Price per/m
2x25/25+25/175	1200 per 10m	<b>1018147</b>	200	97.14
2x32/25+25/175	1200 per 10m	<b>1018148</b>	200	106.65
2x32/32+25/175	1200 per 10m	<b>1018149</b>	200	111.52

Ecoflex  
(Pre-insulated) Pipe

\*Pipe available in our cut to length service.

\*Please note products may have an extended lead time


# Uponor Ecoflex (Pre-insulated) Pipe

## Ecoflex Supra



**NEW!**

Ecoflex single pipe PE-HD, max. 16 bar / 20°C. For chilled water and potable water. **Use Plasson coupling or Wipex 6 bar coupling.**

Description	 uPoints	Code	Qty*	Price per/m
25/68	1000 per 10m	<b>1095722</b>	200	26.21
32/68	1000 per 10m	<b>1095723</b>	200	27.86
40/140	1000 per 10m	<b>1095724</b>	200	58.62
50/140	1000 per 10m	<b>1095725</b>	200	61.56
63/140	1000 per 10m	<b>1095726</b>	200	66.93
75/175	1000 per 10m	<b>1095727</b>	100	71.73
90/175	1000 per 10m	<b>1095728</b>	100	68.31
110/200	1000 per 10m	<b>1095729</b>	100	94.31


## Ecoflex Supra Plus



**NEW!**

Ecoflex single pipe PE-HD, max. 16 bar / 20°C, complete with frost protection cable. For chilled water and potable water. **Use Plasson coupling or Wipex 6 bar coupling.**

**Please add 1 metre of extra pipe to allow for electrical connection.**

Description	 uPoints	Code	Qty*	Price per/m
25/68	1000 per 10m	<b>1095730</b>	150	52.51
32/68	1000 per 10m	<b>1095731</b>	150	53.36
40/140	1000 per 10m	<b>1095734</b>	150	83.80
50/140	1000 per 10m	<b>1095736</b>	150	86.73
63/140	1000 per 10m	<b>1095737</b>	150	92.06
75/175	1000 per 10m	<b>1095738</b>	100	97.88
90/175	1000 per 10m	<b>1095739</b>	100	100.39
110/200	1000 per 10m	<b>1095740</b>	100	128.30

## Ecoflex Cable Joiners



Used for joining the Uponor Supra Plus cable in tees and other joints.

Description	Code	Qty	Price each
Termination, Straight and elbow joint	<b>1042310</b>	1 set	79.58
Tee Joint	<b>1042311</b>	1 set	189.57

## Ecoflex Supra Plus connection set



Set includes Supra Plus control unit, 2 rubber end caps, 5m sensor cable, fixing screws, cable connections and full instructions. Control unit requires 230V supply.

Description	Code	Qty	Price each
25+32/68	<b>1048697</b>	1	360.06
40+50+63/140	<b>1048699</b>	1	360.06
75/175	<b>1048700</b>	1	415.41
90/175	<b>1048701</b>	1	472.26
110/200	<b>1048702</b>	1	429.97

\*Pipe available in our cut to length service.

Ecoflex rubber end-cap set



Description	Code	Qty	Price each
Twin 75+90/250	1088979	1	74.41
Twin 40+50+63/200	1018307	1	59.49
Twin 25+32+50/175	1018308	1	58.09
Twin 25+32+40/175	1018309	1	52.68



Description	Code	Qty	Price each
Quattro	1018306	1	56.63
Thermo HP 32mm	1086838	1	41.19
Thermo HP 40mm	1094252	1	44.75

Ecoflex rubber end-cap set



Description	Code	Qty	Price each
125/250	1083869	1	80.70
75+90+110/200	1018310	1	58.92
90+110/175	1018311	1	74.22
63+75/175	1018312	1	54.13
50+63/200	1086685	1	66.87
32+40+50/175	1018313	1	54.13
40+50+63/140	1018314	1	45.08
25+32/140	1018315	1	42.32
25+32/68	1018316	1	33.37

# Uponor Wipex Fittings



## Wipex male coupling, PN6



Used with the following piping systems: Thermo Single, Thermo Twin, Thermo Mini, Thermo PRO, Quattro and Supra. Compression fitting with male thread for connection.

Description	Code	Qty	Price each
25x1"	1018328	1	28.60
32x1"	1018329	1	31.45
40x1¼"	1018330	1	41.29
50x1¼"	1018331	1	55.48
63x2"	1018332	1	94.48
75x2"	1018333	1	131.12
90x3"	1018334	1	187.65
110x3"	1018335	1	233.62
125x4"	1078368	1	412.10

## Wipex male coupling, PN10



Used with the following piping systems: Aqua Single, Aqua Twin and Quattro. Compression fitting with male thread for connection.

Description	Code	Qty	Price each
25x1"	1018336	1	29.71
32x1"	1018338	1	33.26
40x1¼"	1018339	1	41.34
50x1¼"	1018340	1	57.46
63x2"	1018341	1	90.51
75x2"	1018342	1	120.44
90x3"	1018343	1	172.36
110x3"	1023170	1	214.62

## Wipex jointing equal PN6



Single fitting for joining two lengths of pipe together. For: Thermo Single, Thermo Twin, Thermo Mini, Thermo PRO, Quattro and Supra.

Description	Code	Qty	Price each
25mm	1042972	1	40.62
32mm	1042973	1	50.20
40mm	1042980	1	64.70
50mm	1042984	1	97.73
63mm	1042981	1	160.23
75mm	1042985	1	239.21
90mm	1042986	1	329.54
110mm	1042987	1	458.37
125mm	1078365	1	536.23

## Wipex jointing equal PN10



Single fitting for joining two lengths of pipe together. For Aqua Single, Aqua Twin and Quattro.

Description	Code	Qty	Price each
25mm	1042970	1	40.29
32mm	1042974	1	51.77
40mm	1042979	1	64.77
50mm	1042983	1	98.38
63mm	1042982	1	160.50

## Wipex T-piece



Used with the following piping systems: Aqua Single, Aqua Twin, Thermo Single, Thermo Twin, Thermo Mini, Quattro and Thermo PRO.

Description	Code	Qty	Price each
1"	1018345	1	30.12
1 1/4"	1018346	1	34.15
2"	1018347	1	69.36
3"	1018348	1	160.87
4" *	1078367	1	183.73

## Wipex 90° bend



Used with the following piping systems: Aqua Single, Aqua Twin, Thermo Single, Thermo Twin, Thermo Mini, Quattro and Thermo PRO.

Description	Code	Qty	Price each
1"	1018350	1	25.46
1 1/4"	1018351	1	31.86
2"	1018352	1	75.60
3"	1018353	1	139.44
4" *	1078366	1	173.80

## Wipex joint



Used with the following piping systems: Aqua Single, Aqua Twin, Thermo Single, Thermo Twin, Thermo Mini, Quattro and Thermo PRO.

Description	Code	Qty	Price each
1"	1018355	1	17.32
1 1/4"	1018356	1	24.27
2"	1018357	1	43.71
3"	1018358	1	63.08

\*Please note all 4" joints require sealant tape to be applied

# Uponor Wipex Fittings

## Wipex flange



Used with the following piping systems: Aqua Single, Aqua Twin, Thermo Single, Thermo Twin, Thermo Mini, Thermo Pro, and Quattro.

Description	Bolt Circle	Bolt Holes	Code	Qty	Price each
1"	85	4	1018359	1	69.24
1¼"	100	4	1018360	1	108.26
2"	125	4	1018362	1	198.58
3"	160	8	1018364	1	238.34
4" *	100	8	1078370	1	260.67

## Wipex reducer



Used with the following piping systems: Aqua Single, Aqua Twin, Thermo Single, Thermo Twin, Thermo Mini, Thermo Pro, and Quattro.

Description	Code	Qty	Price each
1¼"x1"	1018368	1	19.70
1½"x1¼"	1018369	1	23.03
2"x1"	1018371	1	55.01
2"x1¼"	1018372	1	45.61
3"x1"	1018374	1	98.11
3"x1¼"	1018375	1	82.40
3"x2"	1018376	1	87.07
4"x3" *	1078369	1	142.76

## Wipex swivel union



For connecting Wipex bodies together when installed in a chamber or H insulation set.

Description	Code	Qty	Price each
1"x1"	1045455	1	54.64
1¼"x 1"	1045456	1	59.59
1¼"x 1¼"	1045457	1	64.57
2"x 1¼"	1045458	1	70.77
2"x 2"	1045459	1	83.18
3"x 2"	1045460	1	136.55
3"x 3"	1045461	1	152.69

\*Please note all 4" joints require sealant tape to be applied

# Uponor Ecoflex (Pre-insulated) Pipe Accessories

## Ecoflex elbow insulation set



For sealing elbow connections of Single and Twin pipes in the trench. Comprises of insulating half-shells, stainless steel bolts and sealant. Only to be used with Uponor rubber end caps.

Description	Code	Qty	Price each
200/175/140	1060985	1	423.32

## Ecoflex 'T' insulation set



For sealing T-connections of Single and Twin pipes in the trench. Comprises of insulating half-shells, stainless steel bolts and sealant. Only to be used with Uponor rubber end caps.

Description	Code	Qty	Price each
140/90/68	1060986	1	428.87
200/175/140	1060982	1	491.72

## Ecoflex 'H' insulation set



For sealing connections of single main lines (flow and return) to twin outlet lines in the trench. Comprises of insulating half-shells, stainless steel screws, plastic dowels and sealant. Only to be used with Uponor rubber end caps.

Description	Code	Qty	Price each
ONE SIZE	1007355	1	799.32

## Ecoflex straight insulation



For sealing straight connections of Single and Twin pipes in the trench. Comprises of insulating half-shells, stainless steel bolts and sealant. Only to be used with Uponor rubber end caps.

Description	Code	Qty	Price each
200/175/140	1060984	1	363.31

## Ecoflex reducer ring



Used with 25mm and 32mm Ecoflex Thermo Mini and Supra pipes when connecting into insulation sets.

Description	Code	Qty	Price each
200/68	1060991	1	36.19



# Ecoflex (Pre-insulated) Pipe Fittings, Components and Accessories

## Ecoflex jacket joint set



For sealing the jacket when connecting pipes together or when connecting to pre-insulated steel fittings. Contains two heat shrink sleeves.

Jacket Size	Sleeve Size	Code	Qty	Price each
200	250	1084574	1	135.31
250	315	1083872	1	142.76

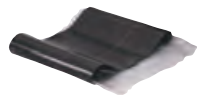
## Ecoflex chamber with lid



Designed to accommodate pipe connections which cannot be made with an Uponor T-insulation set, e.g. for connecting Uponor Single to Twin pipes or for Uponor Quattro pipelines.  
Size 980 (d) x 685 (h) x 1660 (l), 50kg.

Description	Code	Qty	Price each
6x140/175/200	1018326	1	1,477.96
8x140/175/200	1018327	1	1,650.46
2x250 – 6x140/175/200	1084576	1	1,796.47
4x250 – 4x140/175/200	1084577	1	2,478.91
6x250 – 2x140/175/200	1084578	1	3,161.33

## Ecoflex shrinkable sleeve for chamber



For sealing jacket pipe in the Uponor chamber outlet.

Description	Code	Qty	Price each
175/200mm	1018380	1	43.33
250mm	1084575	1	64.57

## Ecoflex sealing tape for chamber



Description	Code	Qty	Price each
50mm x 10m	1018382	1 roll	91.51

## Ecoflex entry sleeve NPW (Non-pressure waterproof)



With heat-shrinkable sleeve. Can be used wherever there is no pressurised water.  
Non-pressure waterproof

Jacket Size	Sleeve Size	Code	Qty	Price each
68	110	1018267	1	55.09
140 & 145	175	1018269	1	60.35
175 & 200	250	1018268	1	73.50
250	315	1083871	1	99.32

### Wipex RS Adapter range



For use with the Ecoflex Thermo and Thermo Pro range of pipes. Allows connection to the Uponor Modular Riser system – see pages 37-39

Description		Code	Qty	Price each
63 x 5,8	NEW	1047013	1	97.19
75 x 6,8	NEW	1047014	1	106.81
90 x 8,2	NEW	1047015	1	179.04
110 x 10,0	NEW	1047016	1	192.24

### Ecoflex trench warning tape



To mark the position of buried pipes. Red, tear-proof plastic tape imprinted with 'Uponor' and symbols for trench identification.

Description	Code	Qty	Price each
Warning tape roll 250m	1018385	1	40.18

### Ecoflex repair tape



Shrinkable tape used for sealing damaged outer jacket. Self adhesive layer to make application easier.

Description	Code	Qty	Price each
160mm x 10m	1093120	1	215.37

### Uponor re-rounding pliers



Tool to assist the mounting of fittings by re-rounding the pipe end (125mm only).

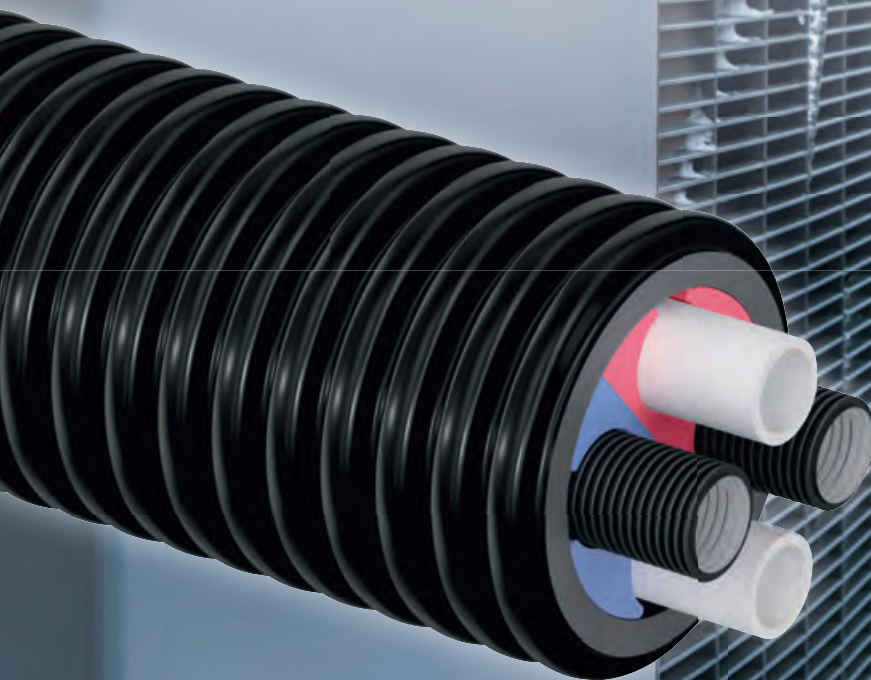
Description	Code	Qty	Price each
125mm	1084142	1	378.37

The Uponor logo is displayed in a bold, blue, sans-serif font in the top right corner of the image. The background of the entire page is a photograph of a snowy rooftop with a heat pump unit and a large, black, corrugated pre-insulated pipe in the foreground.

# Build on Uponor Ecoflex Thermo Twin Heat Pump

**Pre-insulated pipe for heat distribution, including conduits for cable supply**

Uponor have developed a new heating service pipework with two additional conduits, that allows for cables to come from the main dwelling to the heat pump. This solution is ideal for outbuildings.



# General Tools and Accessories



Using our tools and accessories ensures full system warranty. This means we have tested the entire system range of pipes, fittings, and pressing jaws as a complete system.

## Plumbing

- Tools & Accessories \_\_\_\_\_ 108
- Q&E Tools & Accessories \_\_\_\_\_ 112

## Underfloor Heating

- Tools and Accessories \_\_\_\_\_ 113



# Plumbing - Tools and Accessories

## MLC Pipe cutting tool



Special pipe cutting pliers for Uponor MLC with an outer diameter of 12-25mm; corrugated tube cutting attachment included.

Description	Code	Qty	Price each
Pipe cutting pliers 12-25mm	1089674	1	31.31
Spare blades for cutting pliers	1089776	1	9.27

## Pipe cutter



Pipe cutter for use with Uponor MLC.

Description	Code	Qty	Price each
Pipe cutter 12-40mm	1089677	1	31.33
Spare cutting blade	1089779	1	12.45

## Pipe cutting tool



Cutting tool for use with Uponor MLC.

Description	Code	Qty	Price each
Pipe cutting tool 25-63mm	1089675	1	38.73
Spare cutting disc	1089777	1	4.41
Pipe cutting tool 50-110mm	1089676	1	72.35
Spare cutting disc	1089778	1	6.24

## MLC Bevelling tool 12-25



Installation tool for the bevelling of Uponor MLC. Supplied with turning handle (can also be used as cordless screwdriver attachment, see instructions).

Description	Code	Qty	Price each
12mm	1015837	1	12.03
14mm	<div>NEW</div> 1006952	1	12.35
16mm	1006830	1	12.05
20mm	1015749	1	12.50
25mm	1015756	1	14.38

## MLC Bevelling tool 32-75



Installation tool for the bevelling of Uponor MLC. Supplied with turning handle (can also be used as cordless screwdriver attachment, see instructions).

Description	Code	Qty	Price each
32mm	1015762	1	19.80
40mm	1006638	1	29.52
50mm	1015808	1	33.58
63mm	1014339	1	41.32
75mm	1014344	1	54.30

## Composite pipe 3-size bevelling tool



Installation tool for the bevelling of Uponor composite pipes.

**Not for use  
with RTM fittings**

Description	Code	Qty	Price each
16/20/25mm	<b>1015739</b>	1	15.42

## Universal deburring tool



For deburring all Uponor composite and PEX pipes.

**Not for use  
with RTM fittings**

Description	Code	Qty	Price each
All sizes	<b>1060167</b>	1	13.65

## Composite pipe inside bending spring



Bending spring for use with Uponor composite pipes.

Description	Code	Qty	Price each
14mm	<b>NEW 1013727</b>	1	2.81
16mm	<b>1013729</b>	1	2.81
20mm	<b>1013734</b>	1	3.18
25mm	<b>1013737</b>	1	4.75
32mm	<b>1013739</b>	1	5.87

## Composite pipe outside bending spring



Bending spring for use with Uponor composite pipes.

Description	Code	Qty	Price each
16mm	<b>1006640</b>	1	3.98
20mm	<b>1013792</b>	1	4.40
25mm	<b>1013794</b>	1	5.08

## Composite pipe bending tool 16-32mm



Bending tool for producing series of identical curves in Uponor composite pipes 16-32mm

Description	Code	Qty	Price each
SAC Uni-pipe PLUS	<b>1071925</b>	1	215.00
MLC Uni-pipe & SAC Uni-pipe PLUS	<b>1013773</b>	1	197.81

## Press Battery pressing tool UP110



Supplied in carrying case, complete with battery and charger unit.

Range of application: 16-110mm.

Description	Code	Qty	Price each
Press tool	<b>1083612</b>	1	1,165.29
Spare battery 12V/3Ah	<b>1083608</b>	1	90.63
Battery charger	<b>1083610</b>	1	91.67

# Plumbing - Tools and Accessories

## Pressing jaws (UP110)



Jaws for use with Uponor press fittings, to be used with UP110. **UPP1 Jaw Profile.**

Description		Code	Qty	Price each
14mm	NEW	1007083	1	73.68
16mm		1007084	1	73.68
20mm		1007086	1	73.68
25mm		1007087	1	76.92
32mm		1007088	1	76.92
40mm		1015768	1	119.32
50mm		1015792	1	127.18

## Pressing chain (UP110)



Pressing chain for use with 63-110mm Uponor Press Fittings, to be used in conjunction with UP110 pressing tool and base pressing unit. **UPP1 Jaw Profile**

Description	Code	Qty	Price each
63mm pressing chain	1046541	1	512.48
75mm pressing chain	1046542	1	520.81
90mm pressing chain	1046543	1	673.57
110mm pressing chain	1046544	1	729.19

## Base pressing unit (UP110)



Description	Code	Qty	Price each
63-110mm base pressing unit	1046545	1	202.30

## Mini 32 Battery Pressing Tool



An alternative to the existing UP110 battery pressing tool, the Mini 32 can press all existing metal and composite press fittings from 12mm up to 32mm.

**Note: Cannot be used with Uponor MLC Modular fittings.**

Description	Code	Qty	Price each
Press Tool (excl. jaw sets)	1083674	1	906.41
Spare Battery 9.6V/2.0Ah	1083605	1	95.02
Spare re-charging unit	1083610	1	91.67

## Mini 32 jaw set



To be used with Mini 32. **Note: Cannot be used with Uponor MLC Modular fittings. KSP0 Jaw Profile.**

Description		Code	Qty	Price each
14mm	NEW	1007090	1	90.40
16mm		1007091	1	90.40
20mm		1007093	1	90.40
25mm		1007094	1	96.25
32mm		1007095	1	96.25



### Manual pressing tool



For use with Uponor MLC & SAC 16-20mm press fittings (in conjunction with inserts for manual pressing tool). Supplied in carrying case without inserts for pressing tool.

Description	Code	Qty	Price each
16-20mm	1015764	1	233.07

### Press Inserts for manual pressing tool



For fitting to the manual pressing tool, which handles 16-20mm Uponor MLC & SAC press fittings.

Description	Code	Qty	Price each
16mm	1015777	1	46.89
20mm	1015780	1	46.89

### Composite pipe pressure test plug



Reusable plug with 1/2" FT for pressure-testing of Uponor MLC & SAC installations.

Description	Code	Qty	Price each
14mm	<b>NEW</b> 1013754	20	3.52
16mm	1013756	20	2.50
20mm	1013760	20	2.61
25mm	1013762	20	2.70
32mm	1013764	10	6.04
40mm	1013765	5	15.83

### Pressure test plug spare O-rings



Description	Code	Qty	Price each
14mm	<b>NEW</b> 1013798	10	0.09
16mm	1013799	10	0.14
20mm	1013801	10	0.18
25mm	1013802	10	0.19
32mm	1013803	10	0.37
40mm	1013804	10	0.36

### Wipex pliers



Used for easier opening of the Wipex sleeve.

Description	Code	Qty	Price each
Wipex pliers	1046407	1	20.69

# Plumbing - Q&E PEX Tools and Accessories

## Q&E M12 Milwaukee expander tool set



Includes 1x 230V, 50Hz fast battery charger, 2x12V / 2.0Ah Li-ion batteries, 1x 100g tube of Molykote tool lubricant, 1x operation manual, 1x lightweight plastic case. Expander heads included 16/20/25.

**\*Expander heads not included, to be purchased separately.**

Description	Code	Qty	Price each
M12 Expander tool Set	<b>1095097</b>	1	349.66
*9.9mm head	<b>1060702</b>	1	43.52
*12mm head	<b>1057171</b>	1	43.52
16mm head	<b>1057172</b>	1	43.52
20mm head	<b>1057173</b>	1	43.52
25mm head	<b>1057175</b>	1	43.52
M12 battery 4.0Ah	<b>1061185</b>	1	89.42

## Q&E M18 Milwaukee expander tool set



Includes 1x 230V, 50Hz fast battery charger, 2x 18V / 2.0Ah Li-ion batteries, 1x 50g tube of Molykote tool lubricant, 1x operation manual, 1x lightweight plastic case. Expander heads included: 16/20/25/32mm.

Description	Code	Qty	Price each
M18 Expander tool Set	<b>1095324</b>	1	672.52
16mm head	<b>1057172</b>	1	43.52
20mm head	<b>1057173</b>	1	43.52
25mm head	<b>1057175</b>	1	43.52
32mm head	<b>1057177</b>	1	46.06

## Q&E M18 VLD Milwaukee expander tool



Uponor Q&E M18 VLD Milwaukee Expansion Tool PEX 40-63, side handle, 2x 18V Li-ion 5.0Ah battery packs, M12 – M18 charger, 150g expansion cone grease, 1x operation manual, 1x lightweight plastic case.

**\*Expander heads not included, to be purchased separately.**

Description	Code	Qty	Price each
M18 VLD Expander tool	<b>1095325</b>	1	1,574.76
*40mm head	<b>1085095</b>	1	274.24
*50mm head	<b>1085096</b>	1	274.24
*63mm head	<b>1085097</b>	1	274.24

## Q&E Graphite paste



For use with Q&E expander tools.

Description	Code	Qty	Price each
30g tube	<b>1008334</b>	1	5.63

# UFH - Tools and Accessories

## PEX Plastic pipe cutters



Cost effective PEX pipe cutters to leave the perfect jointing finish.

Description	Code	Qty	Price each
Pipe cutter 12-25mm	1089673	1	16.83

## Pipe and conduit cutter



This tool is specially designed for cutting pipe-in-conduit. Conduit cutter is guarded to prevent damage to the pipe inside the conduit. Maximum pipe diameter 25mm.

Description	Code	Qty	Price each
Cutter	1089674	1	31.31
Spare blade	1089776	1	9.27

## Tacker kombi gun



For all Uponor pipe from 16mm to 20mm (multi-layer composite pipe and cross-linked polyethylene pipe) to all common UK insulation boards. For use with Kombi Klips 1086529 and 1086530.

Description	Code	Qty	Price each
Kombi Gun	1002295	1	157.00

## Uponor tape



Wide tape for sealed joining of Uponor insulation products.  
Roll width: 50mm  
Roll Length: 66m

Description	Code	Qty	Price each
Width 50mm x Length 66m	1000012	1 roll	5.74

## Uponor tape dispenser



For taping of insulation sections and edges.  
For use with tape 1000012

Description	Code	Qty	Price each
Tape dispenser	1000142	1 pce	32.11

# UFH - Tools and Accessories

## Pipe de-coiler



Suitable for both evalPEX and MLC pipes. Includes coil retention arms and de-coiling eyelet. Can be used for all diameters up to 25mm.

Description	Code	Qty	Price each
De-coiler	1058662	1 set	255.72

## MLC Pipe straightener



For the fast, simple, straight alignment of Uponor MLC supplied in coils (16mm to 32mm). Adjustable to the desired size. Can be used in combination with the Uponor MLC uncoilers.

Description	Code	Qty	Price each
Pipe straightener	1010512	1	218.91

# Uponor Accreditations



Join the conversation...

 @UponorUKWatfordofficial

 @UponorUK

 UponorUK

 @UponorUK



## Project notes section

## Project notes section



# Uponor - Conditions of Sale

## 1. Interpretation

In these conditions-Buyer;

means the company, firm, body or person buying the Goods and/or services or whose order for the Goods and/or Services is accepted by the Supplier; Conditions

means the terms and conditions set out in this document and include any special terms and conditions agreed in writing between the Buyer and the Supplier; any special terms shall prevail;

Contract

means the contract for the sale of the Goods and/or Services to be provided by the Supplier pursuant to the Contract;

Goods

mean the goods the Supplier agrees to supply; Services means the Services the Supplier agrees to supply;

Supplier

means Uponor Limited or any other Uponor Group Company Writing includes fax, e-mail and other comparable means of communication

1.2 Any reference in these conditions to any provision of a statute shall be construed as a reference to that provision as amended, re-enacted or extended at the relevant time.

1.3 Any reference to any English legal concept or term shall, where relevant, be deemed to apply to the nearest analogous concept or term in any other jurisdiction.

## 2. Basis of the Sale

2.1 The Supplier shall sell the Goods and/or Services in accordance with any written quotation of the Supplier which is accepted by the Buyer or written order of the Buyer which is accepted by the Supplier, subject in either case to these Conditions, which shall govern the Contract to the exclusion of any other terms and conditions.

2.2 No variation to these Conditions shall be binding unless agreed in Writing by an authorised representative (Director / Company Secretary) of the Supplier.

2.3 Any typographical, clerical or other error or omission in any sales literature, quotation, price list, acceptance of offer, invoice or other document or information issued by the Supplier shall be subject to correction without any liability on the part of the Supplier.

## 3. Orders and Specifications

3.1 No order submitted by the Buyer is accepted by the Supplier unless confirmed in Writing by the Supplier's authorised representative or delivery of the Goods and/or Services by the Supplier.

3.2 The Buyer is responsible for ensuring the accuracy of the terms of any order (including any applicable specification) and for giving the Supplier any necessary information relating to the Goods and/or Services within a sufficient time to enable the Supplier to perform the Contract in accordance with its terms.

3.3 The quantity, quality and description of and any specification for the Goods and/or Services are those set out in the Supplier's quotation or the Buyer's order (to the extent accepted by the Supplier).

3.4 If the Goods are to be manufactured or any process is to be applied to the Goods by the Supplier in accordance with a specification submitted by the Buyer, the Buyer shall indemnify the Supplier against all loss, damages, costs and expenses incurred by the Supplier in connection with any claim for infringement of any patent, copyright, design, trade mark or other intellectual property rights. The Supplier gives no warranty that any Goods based on the specification of the Buyer will be fit for their intended purpose.

3.5 The Supplier may make any changes in the specification of the Goods and/or Services which are required to conform to any applicable statutory or EC requirements or which do not materially affect their quality or performance.

3.6 No order which has been accepted by the Supplier may be cancelled by the Buyer, except with the agreement in Writing of the Supplier and on terms that the Buyer indemnifies the Supplier in full against all loss (including loss of profit), costs (including the cost of all labour and materials used), damages, charges and expenses incurred by the Supplier as a result of cancellation.

3.7 All drawings, designs, specifications and other information provided by the Supplier are confidential and all rights of copyright ownership and other intellectual property rights in respect of them shall remain vested in the Supplier and shall not pass to the Buyer.

## 4. Price of Goods

4.1 The price of the Goods and/or Services shall be the price specified on the Supplier's confirmation of order or, if none, the price specified in the Supplier's quotation or, if none, the Supplier's published price list current at the date of supply of the Goods and/or Services shall apply.

4.2 The Supplier may vary the price of the Goods and/or Services at any time before delivery to reflect any change in the cost to the Supplier which is due to any factor beyond the control of the Supplier (including, without limitation, foreign exchange fluctuation, currency regulation, increase in the costs of labour, materials or other costs of manufacture), any change in delivery dates, quantities or specifications for the Goods and/or Services which is requested by the Buyer, or any delay caused by any instructions of the Buyer or failure of the Buyer to give the Supplier adequate information or instructions.

4.3 All prices are given by the Supplier on an ex works basis and exclude VAT and other duties and the Buyer shall be liable to pay those duties and (subject to condition 6.6) the Supplier's charges for transport, packaging and insurance.

4.4 The Supplier may sue the Buyer for the price of the Goods, notwithstanding that title to them has not passed to the Buyer.

## 5. Terms of Payment

5.1 The Supplier may invoice the Buyer at any time for the price of the Goods and/or Services or part of it and, without limitation, may invoice the Buyer in respect of any instalment of an order. Unless the Supplier specifies otherwise (in writing), the Buyer shall pay the invoice (in full without any set off, deduction or counterclaim) within 30 days of the end of the calendar month in which the invoice is dated. Time of payment of the price shall be of the essence of the Contract.

5.2 If the Buyer fails to make any payment by the due date or the Supplier has reasonable grounds for believing that the Buyer will not make any payment then, without prejudice to any other right or remedy available to the Supplier, the Supplier may cancel the Contract or suspend any further deliveries to the Buyer.

5.3 If the Buyer fails to make any payment on the due date then without prejudice to any other right or remedy available to the Company the Company shall be entitled to charge the Buyer interest (both before and after any judgment) on the amount unpaid at the rate of 8% per annum above Bank of England base rate from time to time until payment is made (a part of a month being treated as a full month for the purpose of calculating interest).

## 6. Delivery, Returns and Performance

6.1 Unless otherwise agreed in writing by the parties, delivery of the Goods shall be made by the Supplier "ex works" as that term is defined in "Incoterms" - the international rules for the interpretation of trade terms of the International Chamber of Commerce sales dated 2000. A cost for delivery will be provided by the supplier to the buyer in each and every instance.

6.2 Any dates quoted for delivery of the Goods and/or Services are approximate only, and the Supplier shall not be liable for any delay in delivery of the Goods and/or Services.

6.3 If the Buyer fails to take delivery of the Goods or fails to give the Supplier adequate delivery instructions then, without prejudice to any other right or remedy available to the Supplier, the Supplier may store the Goods until actual delivery and charge the Buyer for the reasonable costs (including insurance) of storage and/or sell the Goods at the best price readily obtainable and (after deducting all reasonable storage and selling expenses) account to the Buyer for the excess over the price under the Contract or charge the Buyer for any shortfall below the price under the Contract.

6.4 The Buyer shall comply with all laws governing the importation of the Goods into the country of destination.

6.5 Minimum individual order value to include free delivery is >£500.00 net (or currency equivalent & excluding VAT). Please contact the supplier for any orders below this value for delivery costs. This term excludes Ecoflex pipe systems (see item 6.9 below) and any other items not included within our price guide.

6.6 Delivery of the goods that are requested direct to site or another third party address, will be subject to additional surcharges over and above delivery costs.

6.7 Where a next day service is required, customers should contact the supplier for a delivery charge quotation for each and every order.

6.8 For deliveries of Ecoflex pipe systems, no returns are allowed and the buyer needs to request a delivery cost from the supplier for each and every order

6.9 Retention to title: Goods remain the property of Uponor Limited until paid for in full. Any query regarding this delivery should be notified in writing to Uponor Limited within 3 working days of receipt of the goods. As signed for proof of delivery (from whomever signs) will be deemed as acceptance of the goods as listed and in good condition.

6.10 No returns will be allowed without prior approval from the supplier.

6.11 All prices are based on ex-works Worcester, UK and delivery costs will be additional to prices quoted.

## 7. Risk and Property

7.1 Risk of damage to or loss of the Goods shall pass to the Buyer at the time of delivery or, if the Buyer wrongfully fails to take delivery the time when the Supplier has tendered delivery of the Goods. The Buyer should insure the Goods accordingly.

7.2 Notwithstanding delivery and the passing of risk in the Goods, or any other provision of these Conditions, the property in the Goods shall not pass to the Buyer until the Supplier has received in cash or cleared funds payment in full of the price of the Goods and all other goods and services agreed to be sold by the Supplier to the Buyer for which payment is then due.

7.3 Until such time as the property in the Goods passes to the Buyer, the Buyer shall hold the Goods as the Supplier's fiduciary agent and bailee, and shall keep the Goods separate from those of the Buyer and third parties and properly stored, protected and insured and identified as the Supplier's property, and shall not be entitled to dispose of the Goods.

- 7.4 Until such time as the property in the Goods passes to the Buyer, the Supplier may at any time require the Buyer to deliver up the Goods to the Supplier and, if the Buyer fails to do so forthwith, enter upon any premises of the Buyer or any third party where the Goods are stored and repossess the Goods.
- 8. Warranties and Liability**
- Warranties**
- 8.1 Subject to the conditions set out below, the Supplier warrants that the Goods will correspond with their specification at the time of delivery and will be free from defects in material and workmanship for a period of 12 months from purchase (with accompanying proof of purchase).
- 8.2 This warranty is given by the Supplier subject to the following conditions:
- 8.2.1 the Supplier shall be under no liability in respect of any defect arising from any drawing, design or specification supplied by the Buyer;
- 8.2.2 the Supplier shall be under no liability in respect of any defect arising from fair wear and tear, wilful damage, negligence, abnormal working conditions, failure to follow the Supplier's instructions (whether oral or in Writing), misuse or alteration or repair of the Goods without the Supplier's approval;
- 8.2.3 this warranty does not extend to parts, materials or equipment not manufactured by the Supplier, in respect of which the Buyer shall only be entitled to the benefit of any such warranty or guarantee as is given by the manufacturer to the Supplier.
- 8.3 Subject as expressly provided in these Conditions, all warranties, conditions or other terms implied by statute or common law are excluded to the fullest extent permitted by law. Without limitation, the Supplier does not warrant the accuracy or otherwise of any design, drawing, specification, instructions, other information or advice that it provides as part of the Services and/or as ancillary information in relation to the Goods.
- 8.4 Any claim by the Buyer which is based on any defect in the quality or condition of the Goods or their failure to correspond with specification shall be notified in writing to the Supplier within 7 days of delivery or (where the defect or failure was not apparent on reasonable inspection) within a reasonable time after discovery of the defect or failure, but, in any event, within 12 months of purchase (with accompanying proof of purchase). If delivery is not refused, and the Buyer does not notify the Supplier accordingly, the Buyer may not reject the Goods and the Supplier shall have no liability and the Buyer shall pay the price as if the Goods had been delivered in accordance with the Contract.
- 8.5 Where any valid claim is made in accordance with this Clause 8, the Supplier may replace or repair the Goods (or the part in question) or re-supply the Services (or the part in question) free of charge or, at the Supplier's sole discretion, refund to the Buyer the price of the Goods or Services (or part of it), but the Supplier shall have no further liability to the Buyer.
- General Liability**
- 8.6 Notwithstanding anything else in this Contract, neither party's liability in respect of death or personal injury caused by that party's negligence shall be limited.
- 8.7 The Supplier shall not be liable to the Buyer for loss of contracts, profits, anticipated savings, revenue, business, stoppage to other work or indirect or consequential loss (whether caused by the negligence of the Supplier, its employees or agents or otherwise) in connection with this Contract.
- 8.8 Notwithstanding any other provision in the Contract except Condition 8.5, the entire liability of the Supplier under or in connection with the Contract shall not exceed the sum paid to the Supplier by the Buyer for the Goods or the Services (or both, where both Goods and Services are to be supplied) which are the subject of the claim in question by the Buyer.
- 8.9 The Supplier shall not be liable for any breach of its obligations to the extent that the Supplier is prevented or hindered from complying with them by "Force Majeure".
- 8.10 "Force Majeure" means any cause beyond the reasonable control of the Supplier including (without limitation) strikes, lock-outs, labour.
- 9. Insolvency of Buyer**
- 9.1 Without prejudice to any other right or remedy available to the Supplier, the Supplier may cancel the Contract or suspend any further deliveries without any liability to the Buyer, if:
- 9.1.1 the Buyer is unable to pay its debts, makes any voluntary arrangement with its creditors or (being an individual or firm) becomes bankrupt or (being a company) becomes subject to an administration order or goes into liquidation; or
- 9.1.2 an encumbrancer takes possession, or a receiver is appointed, of any of the property or assets of the Buyer; or
- 9.1.3 the Buyer ceases, or threatens to cease, to carry on business; or
- 9.1.4 the Supplier reasonably believes that any of the foregoing events is about to occur in relation to the Buyer and notifies the Buyer accordingly.
- 9.2 If the Goods and/or Services have been delivered but not paid for and the Supplier cancels the Contract under Conditions 5.2 and/or 9, the price shall become immediately due and payable notwithstanding any previous agreement or arrangement to the contrary.
- 10. Non-standard Orders**
- 10.1 Where the Buyer orders Goods or materials of a type, size or quality not normally produced by the Supplier or Services not normally performed by the Supplier, the Supplier shall use all reasonable endeavours to execute the order but, without prejudice to any other provision limiting the Supplier's liability, if it proves impossible, impracticable or uneconomical to carry out or complete the order, the Supplier may cancel the Contract or the uncompleted balance of it without penalty and the Buyer shall only be liable to pay for the part of it actually delivered or performed.
- 11. Export Sales**
- 11.1 Subject to Condition 6.1, where Goods are sold on the basis of international trade terms, they shall be defined in accordance with "Incoterms" -the international rules for the interpretation of trade terms of the International Chamber of Commerce sales dated 2000.
- 11.2 Where Goods are sold FOB, the Supplier shall not be required to give the Buyer the notice specified in Section 32(3) of the Sale of Goods Act 1979.
- 11.3 Unless otherwise agreed by the Supplier in Writing, the price of the Goods and/ or Services shall be secured by an irrevocable letter of credit satisfactory to the Supplier and established by the Buyer in favour of the Supplier immediately upon receipt of the Supplier's confirmation of order form and confirmed by a United Kingdom bank acceptable to the Supplier. The letter of credit shall be for the price payable plus any duties and taxes payable to the Supplier and shall be valid for the longer of six (6) months or any period estimated by the Supplier for delivery of the Goods and/or Services.
- 12. Packing**
- 12.1 Unless otherwise agreed in Writing by the parties, the price specified by the Supplier excludes the cost of packing cases and packing materials, for which the Buyer shall be additionally liable. If the Supplier notifies the Buyer that packing cases and/or materials are returnable, then the full cost of these is payable by the Buyer if the Buyer does not return them in good condition to the Supplier either (at the Supplier's option) carriage paid or in the Supplier's vehicle within three (3) months of their delivery to the Buyer. Where not returnable, the Buyer will dispose of all packing in accordance with the regulations (whether statutory or otherwise) relating to the protection of the environment.
- 12.2 The Supplier shall use all reasonable endeavours to ensure, where necessary, the appropriateness of packing before despatch, but the Supplier shall not be liable for any damage to or loss of Goods between despatch from the Supplier and delivery in accordance with this Contract.
- 13. General**
- 13.1 The Supplier may perform any of its obligations or exercise any of its rights under this Contract through any other member of its group.
- 13.2 The Buyer may not assign any of its rights or obligations or mortgage, charge (otherwise than by floating charge) any of its rights under this Agreement without the prior written consent of the Supplier.
- 13.3 Each party acknowledges that, in entering into this Contract, it does not do so on the basis of and does not rely on any representation, warranty or other provision except as expressly provided in this Contract and all conditions, warranties or other terms implied by statute or common law are excluded. This condition shall only apply to the extent permitted by law.
- 13.4 Any notice required or permitted to be given by either party to the other shall be in Writing addressed to that other party at its registered office or principal place of business or such other address as may at the relevant time have been notified pursuant to this provision to the party giving the notice.
- 13.5 No waiver by the Supplier of any breach of the Contract by the Buyer shall be considered as a waiver of any subsequent breach of the same or any other provision.
- 13.6 If any provision of the Contract is held by any competent authority in UK law to be invalid or unenforceable in whole or in part the validity of the other provisions of the Contract and the remainder of the provision in question shall not be affected.
- 13.7 A person who is not a party to the Contract has no rights under the Contracts (Rights of Third Parties) Act 1999 to enforce any term of the Contract.
- 13.8 The Contract shall be governed by and construed in accordance with the laws of England, and the parties submit to the non-exclusive jurisdiction of the English courts.
- 13.9 When supplied as B2B EEE the producer invokes regulation 9.2 and passes all WEEE obligations to the end user.

Uponor Limited ("Uponor") guarantees [to the original purchaser/customer] that pipes and fittings sold by it are free of defects in materials or manufacture under normal conditions of use for a period of 25 years and in case of electrical and mechanical products for 2 years from the date of installation. This guarantee only applies to the products stored, installed, tested and operated in accordance with the fitting instructions issued by Uponor and valid at the time the products were installed.

Where a claim is made during the guarantee period and products are proven to be defective in materials and/or manufacture at the time of delivery, Uponor will supply replacement products free of charge. This is the exclusive remedy under this guarantee.

Uponor disclaims any warranty or guarantee not expressly provided for herein, including any implied warranties of merchantability or fitness for a particular purpose. Uponor further disclaims any and all responsibility or liability for losses, damages and expenses, including special, direct, indirect, incidental and consequential damages, whether foreseeable or not, including without limitation any loss of time or use or any inconvenience arising from the ownership, installation or use of the products sold hereunder.

This guarantee does not affect the statutory rights of the consumer.

Copyright © Uponor (Uponor Limited.)

Reproduction of any part of this publication for any purpose is not permitted without the prior written permission of Uponor Limited.

The contents of this brochure are provided for guideline only, please consult our technical manuals for full up-to-date information.

Uponor reserves the right to alter specifications and operating parameters for all their Underfloor Heating and Plumbing & Heating Systems at any time as part of its policy of continuous product development.

Care has been taken to ensure that the information in this price guide is correct at the time of going to press. Uponor Limited reserve the right to alter prices and the details of designs and performance of products without notice. E&OE.

## **Uponor Limited**

The Pavilion,  
Blackmoor Lane,  
Watford,  
Hertfordshire,  
WD18 8GA

**T** 01923 927000

**F** 01923 223760

**E** [enquiries.uk@uponor.com](mailto:enquiries.uk@uponor.com)

**W** [www.uponor.co.uk](http://www.uponor.co.uk)