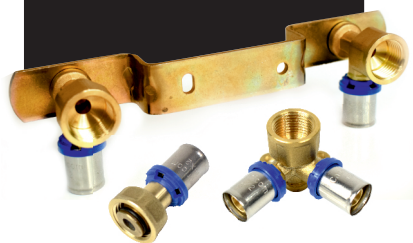


NEW!

PRESS FITTING
MODELS



QualiPress

Drinking water and radiant heating
systems solutions

Quality. Precision. Safety.

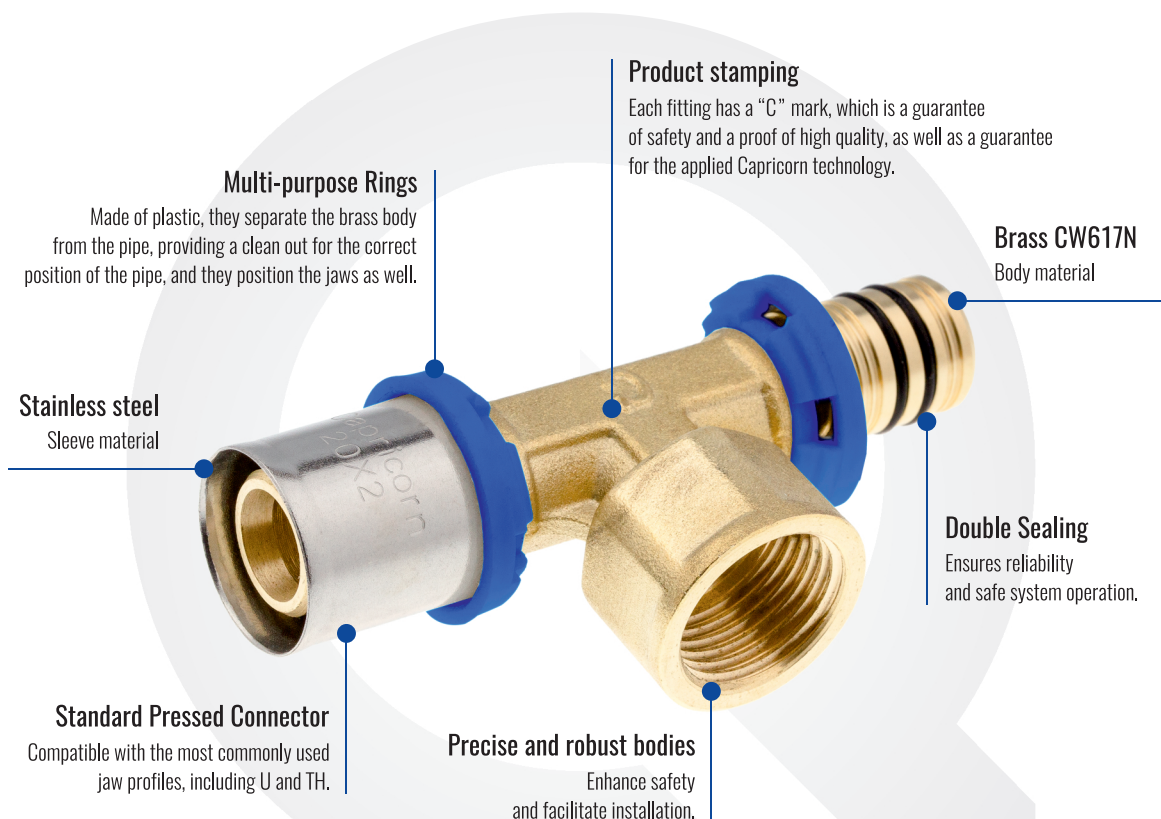
QualiPress

For **Capricorn**, a modern manufacturing company, the quality and development of its products has always come first. The heart of the QualiPress System is press fittings and commercial tubes. The reliability and long-term durability of joints is ensured by a suitable press system, tailored to the needs of both heating and utility water systems. The Capricorn commercial tube combined with the Capricorn brass fittings will ensure smooth and solid installation for trouble-free use.

The **QualiPress System** is a state-of-the-art, complete fitting system, comprising superior five-layer composite pipes and brass fittings within the diameter range of 16-32mm. A wide range of fittings makes it possible to carry out any type of installation, both for heating and utility water.

The **QualiPress procedure** involves pressing a ring around a pipe in which a fitting connector is set. Double o-ring sealing integrated in the fitting ensures leak-tightness of joints and trouble-free operation of the system. The QualiPress System is a perfect solution for both designing new and renovating existing internal central heating systems, surface (floor, wall) heating and cooling systems, and hot and cold utility water systems.

System build



Max. work temperature: 95°C
Max. work pressure: 10 bar
Norms: ISO 21003 / PZH

System advantages

✓ Wide range of applications

Multi-layered pipes included in the QualiPress System can be used in both heating and drinking water systems, as well as in all kinds of surface heating and cooling systems.

✓ Health and environmental protection

The materials used to manufacture components of the system are appropriate for potable water systems, environmentally and human health-friendly, while the system pipes are recyclable.

✓ Safety

A suitable design of the plastic ring allows for automatic, correct press jaw positioning. There's no need to use dedicated fittings with a ring separating metal from metal.

✓ High quality

Made with hygiene-neutral and corrosion resistant materials pipes are resistant to scaling, while pipelines suffer only minimum losses of pressure and velocity.

✓ Functional durability

Superior materials such as PE RT type II ensure optimal parameters for pipes, and high chemical and mechanical resistances.

✓ Versatility

Used with two different clamping press jaws profiles (U and TH) system is reliable and easy to joint.

Fittings

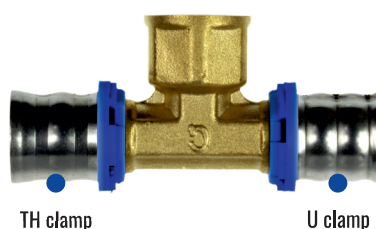
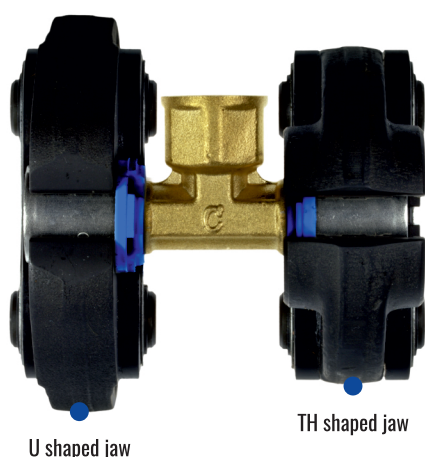
The fittings are parts which join pipes in heating and drinking water systems. The materials used allow for their use in contact with drinking water. The Qualipress fittings combine many years of expertise and experience, approved technical solutions and high-class materials famous for their outstanding strength and resistance to corrosion. As a result, we have an innovative fitting system.

✓ versatile connector compatible with the most commonly used jaw profiles, including U and TH

✓ precision-made parts guarantee safety and facilitate installation

✓ double sealing ensures reliability and safety of system operation

✓ multi-purpose plastic rings isolate brass bodies from aluminium layers in multi-layered pipes, and ensure that the pipe is seated properly, as well as precisely position the jaws on the fitting



Positioning of the jaws

The TH-shaped jaw embraces the plastic ring, while the U-shaped jaw grip is pushed close to the plastic ring. The solutions described above eliminate mistakes resulting from incorrect location of the press jaws.

Types of profiles

The modern design of the fittings enables the carrying out of connections using press jaws featuring the two most common press profiles - U and TH.

List of available fittings

FITTING TYPE	PRODUCT CODE	THREAD / PIPE DIAMETER	PACKAGING
Press tee	9-4311-166-16-22-13	16 x 16 x 16 mm	Separate - 2 pcs Collection - 50 pcs
	9-4311-200-20-22-13	20 x 20 x 20 mm	
	9-4311-266-26-22-13	26 x 26 x 26 mm	
	9-4311-322-32-22-13	32 x 32 x 32 mm	
Reducing press tee	9-4321-016-50-22-13	16 mm x 1/2" x 16 mm	Separate - 2 pcs Collection - 20 pcs
	9-4321-020-50-22-13	20 mm x 1/2" x 20 mm	
	9-4321-020-75-22-13	20 mm x 3/4" x 20 mm	
	9-4321-026-50-22-13	26 mm x 1/2" x 26 mm	
	9-4321-026-75-22-13	26 mm x 3/4" x 26 mm	
Press tee with female thread	9-4331-160-20-22-13	16 x 20 x 16 mm	Separate - 2 pcs Collection - 20 pcs
	9-4331-200-16-22-13	20 x 16 x 16 mm	
	9-4331-206-16-22-13	20 x 16 x 20 mm	
	9-4331-206-20-22-13	20 x 20 x 16 mm	
	9-4331-260-20-22-13	26 x 16 x 16 mm	
	9-4331-260-16-22-13	26 x 16 x 20 mm	
	9-4331-266-16-22-13	26 x 16 x 26 mm	
	9-4331-266-20-22-13	26 x 20 x 20 mm	
	9-4331-266-26-22-13	26 x 20 x 26 mm	
	9-4331-320-26-22-13	32 x 16 x 32 mm	
	9-4331-320-32-22-13	32 x 20 x 32 mm	
	9-4331-326-26-22-13	32 x 26 x 26 mm	
	9-4331-326-32-22-13	32 x 26 x 32 mm	
Straight press clamp	9-4340-016-16-22-13	16 x 16 mm	Separate - 2 pcs Collection - 50 pcs
	9-4340-020-20-22-13	20 x 20 mm	
	9-4340-026-26-22-13	26 x 26 mm	
	9-4340-032-32-22-13	32 x 32 mm	
Straight press clamp with female thread	9-4341-016-50-22-13	16 mm x 1/2"	Separate - 2 pcs Collection - 50 pcs
	9-4341-020-50-22-13	20 mm x 1/2"	
	9-4341-020-75-22-13	20 mm x 3/4"	
	9-4341-026-10-22-13	26 mm x 1"	
	9-4341-026-75-22-13	26 mm x 3/4"	
	9-4341-032-10-22-13	32 mm x 1"	
	9-4341-032-12-22-13	32 mm x 1 1/4"	
Straight press clamp with male thread	9-4343-016-50-22-13	16 mm x 1/2"	Separate - 2 pcs Collection - 50 pcs
	9-4343-016-75-22-13	16 mm x 3/4"	
	9-4343-020-50-22-13	20 mm x 1/2"	
	9-4343-020-75-22-13	20 mm x 3/4"	
	9-4343-026-75-22-13	26 mm x 3/4"	
	9-4343-026-10-22-13	26 mm x 1"	
	9-4343-032-10-22-13	32 mm x 1"	



List of available fittings

FITTING TYPE	PRODUCT CODE	THREAD / PIPE DIAMETER	PACKAGING
Reducing straight press clamp	9-4350-016-20-22-13	20 x 16 mm	Separate - 2 pcs Collection - 50 szt
	9-4350-016-26-22-13	26 x 16 mm	
	9-4350-020-26-22-13	26 x 20 mm	
	9-4350-032-20-22-13	32 x 20 mm	
	9-4350-032-26-22-13	32 x 26 mm	
Straight fitting double multilayer pipe / compression copper pipe	9-4351-050-00-22-13	16 mm x 1/2"	Separate - 2 pcs Collection - 20 szt
Press elbow 90°	9-4360-016-16-22-13	16 x 16 mm	Separate - 2 pcs Collection - 50 pcs
	9-4360-020-20-22-13	20 x 20 mm	
	9-4360-026-26-22-13	26 x 26 mm	
	9-4360-032-32-22-13	32 x 32 mm	
Press elbow 90° with female thread	9-4361-016-50-22-13	16 mm x 1/2"	Separate - 2 pcs Collection - 50 pcs
	9-4361-020-50-22-13	20 mm x 1/2"	
	9-4361-020-75-22-13	20 mm x 3/4"	
	9-4361-026-75-22-13	26 mm x 3/4"	
Press elbow 90° with male thread	9-4363-016-50-22-13	16 mm x 1/2"	Separate - 2 pcs Collection - 50 pcs
	9-4363-020-50-22-13	20 mm x 1/2"	
	9-4363-020-75-22-13	20 mm x 3/4"	
	9-4363-026-75-22-13	26 mm x 3/4"	
Surface-mounted press elbow 90° with female thread	9-4370-016-50-22-13	16 mm x 1/2"	Separate - 2 pcs Collection - 50 pcs
	9-4370-020-50-22-13	20 mm x 1/2"	
	9-4370-020-75-22-13	20 mm x 3/4"	
Running elbow 90° for wall mounting	9-4370-166-50-22-13	16 mm x 1/2" x 16 mm	Separate - 2 pcs Collection - 20 pcs
	9-4371-200-50-22-13	20 mm x 1/2" x 20 mm	
Flat sink strip with 100 mm spacing	9-4470-100-14-33-13	16 mm x 1/2"	Separate - 14 pcs
	9-4470-100-20-33-13	20 mm x 1/2"	
Flat sink strip with 150 mm spacing	9-4470-150-14-33-13	16 mm x 1/2"	Separate- 12 pcs
	9-4470-150-20-33-13	20 mm x 1/2"	
Offset sink strip with 150 mm spacing	9-4471-150-14-33-13	16 mm x 1/2"	Separate - 12 pcs
	9-4471-150-20-33-13	20 mm x 1/2"	



Tools

Comfort-Line ACO 103 Press Tool with TH/U jaws set

- ✓ compact and highly efficient
- ✓ durable lithium-ion batteries
- ✓ an additional on/off switch and press force control with a LED indicator
- ✓ rotating head
- ✓ automatic operation mode
- ✓ safe operation thanks to the ergonomic design and the 2K casing
- ✓ a part for manual unlocking
- ✓ single-handed operation

NovoCheck App



- ✓ data transfer between pressing tool and app
- ✓ possibility to check the pressing tool's current status
- ✓ analysis of the pressing tool performance
- ✓ integrated report function for documentation of the installation



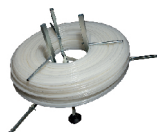
Scope of applications

Compatible with press jaws of various types including U and TH profiles available

Accessories

- ✓ clamping jaws
- ✓ batteries of various capacities
- ✓ a charger fitted with many popular variants of plugs

TOOL	PRODUCT CODE	TYPE
Press tool with TH type jaws set Enables making permanent press connections.	8-1200-000-00-24-14	ACO 103 model
Shears for multi-layer pipes Designed for precise right-angle cutting of up to 26 mm diameter plastic pipes with or without a metal (aluminium/copper) insert. Ensure efficient and clean cut at an angle of 90°.	8-1130-000-00-24-12	aluminium / copper
Jaws set 16 / 20 / 26 / 32 mm TH jaws 16 / 20 / 25 / 32 mm U jaws	8-1200-001-00-24-12	TH type jaws
	8-1200-002-00-24-12	U type jaws
Press jaws We offer the most popular jaw profiles: U and TH. The jaws are designed for use in automatic pressing systems.	8-1150-016-00-24-12	TH profile for Ø16 mm pipes
	8-1150-020-00-24-12	TH profile for Ø20 mm pipes
	8-1150-026-00-24-12	TH profile for Ø26mm pipes
	8-1150-032-00-24-12	TH profile for Ø32 mm pipes
	8-1151-016-00-24-12	U profile for Ø16 mm pipes
	8-1151-020-00-24-12	U profile for Ø20 mm pipes
	8-1151-025-00-24-12	U profile for Ø25 mm pipes
	8-1151-032-00-24-12	U profile for Ø32 mm pipes
Chamfering and deburring calibrator The chamfering and grating calibrators are available in two options: for pipes with diameters of 16mm and 20mm, and for pipes with diameters of 16mm, 20mm and 26mm.	8-1009-016-20-24-12	Ø16 / Ø20 mm
	8-1009-016-26-24-12	Ø16 / Ø20 / Ø26 mm
Chamfering and deburring calibrator The chamfering and grating calibrators with exchangeable terminations for pipe calibration: 16x2, 20x2, 26x3, 32x3.	8-1300-000-00-24-12	calibrator holder
	8-1300-000-00-24-12	header 16 x 2 mm
	8-1300-020-00-24-12	header 20 x 2 mm
	8-1300-026-00-24-12	header 26 x 3 mm
	8-1300-032-00-24-12	header 32 x 3 mm
Decoiler Increases comfort, efficiency and mobility of the installer. Made with high quality galvanised steel profiles.	9-8100-000-00-34-03	low
	9-8100-000-26-33-12	low with extendable arms
	9-8140-000-00-34-03	high





Installation

The installation of the system involves proper pipe preparation: right-angle cutting/calibration/chamfering/grating. Then, the pipe is slotted into the fitting until it arrives in the clean out located in a plastic ring. Having been prepared in such a way, the connections are pressed by means of relevant tools like a radial press and a jaw. The connectors can be pressed with two types of jaws, and the acceptable profiles are U and TH. A unique design of the steel press ring protects the jaw against incorrect location on the connector during installation. The TH jaw embraces the plastic ring, and the U jaw grip is effected between the plastic ring and the steel ring flange.



1 Cutting

Cut the pipe at the right angle to your required length with a pipe cutter. Never use a knife or saw to cut pipes.



3 Inserting the fitting

Enter the Capricorn fitting inside the pipe end until you feel it is stopped. A pressed sleeve must be stable and in fixed position between the fitting's flange and pipe's termination. The end of the pipe must be visible through the holes in a plastic ring, which means that the pipe entered the connector fully.



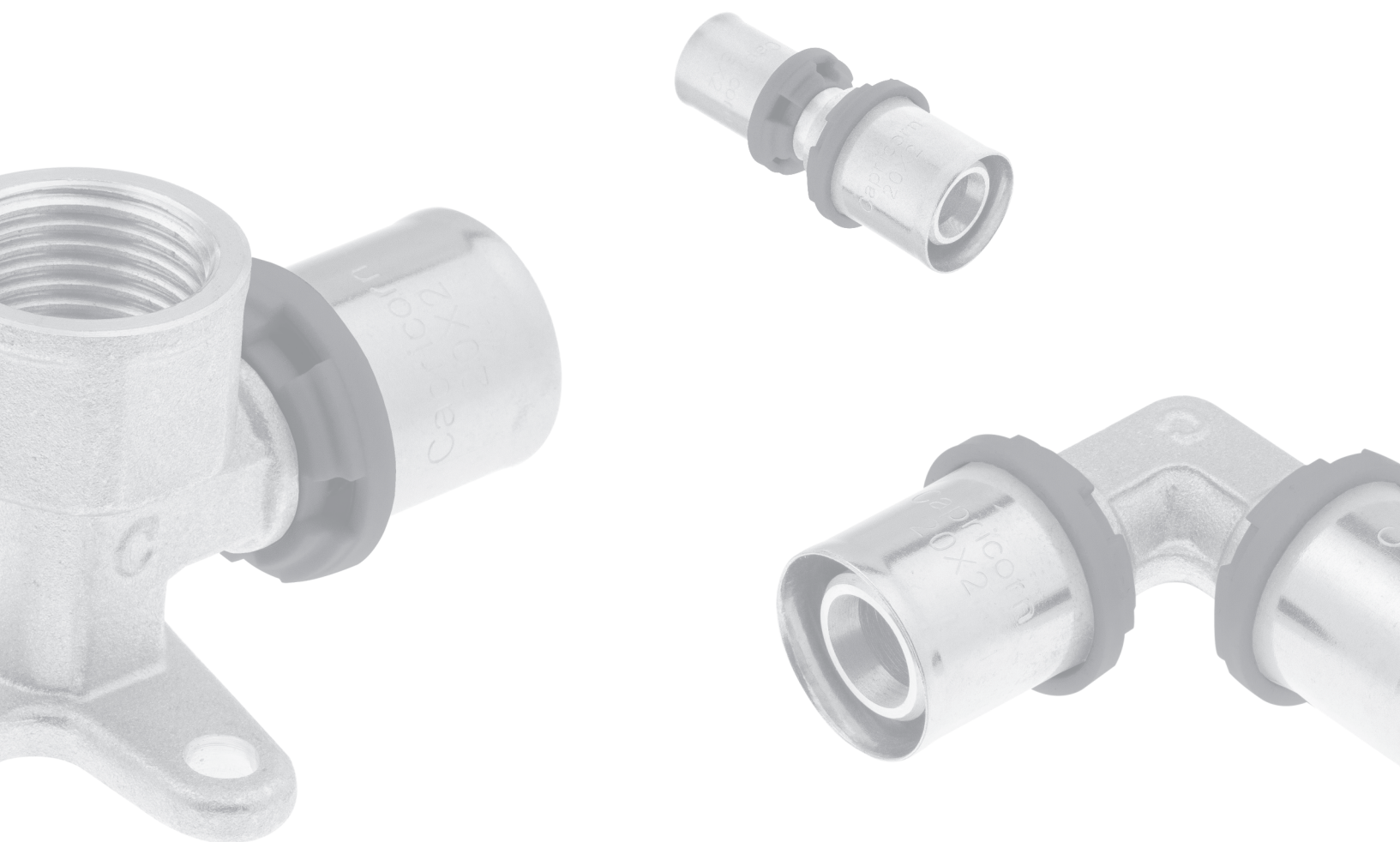
2 Calibrating and chamfering

Calibrate the pipe end to restore the circularity of the edge after cutting. The pipe end should be either chamfered or left unprocessed (with sharp edges).



4 Pressing

Position the jaws correctly on the fitting. Do not position the jaws askew! Remember that the incorrect use of the QualiPress Aco tools may result in wounding, crashing or bruising. Keep your hands away from the moving parts of a tool, when pressing.



Capricorn S. A.
 Ciernie 11, 58-160 Świebodzice
 tel: +48 74 854 05 16 fax: +48 74 854 05 83
www.capricorn.pl



Radiant heating
and drinking water
systems



Surface heating
and cooling
systems



Indoor water
drainage
systems



Air admittance
systems for sanitary
installations



Systems
for water drainage
outside the building