



Reference

Intake pipeline for seawater in Copenhagen Harbour



Uključenost Uponora

- ✔ 3000 mm well with DN900 valves

Intake pipeline for seawater in Copenhagen Harbour

Butt welding by night of 900 mm pipes ensures stable operation of a district cooling solution in Copenhagen Harbour.

Uponor 360° Project Services

Činjenice o projektu:

Location	Završetak
Copenhagen, Denmark	2016
Vrsta objekta	Product systems
Gradski	Grijanje i hlađenje
Vrsta projekta	
Nova zgrada	

Partneri

Costumer: HOFOR FJERNKØLING A/S
Contracter: MJ Eriksson A/S
Pipe supplier and installer: Uponor
Infra Denmark

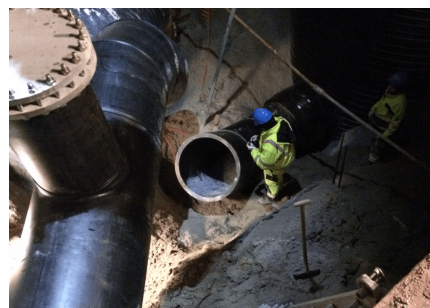
In connection with the construction of a major seawater facility in Copenhagen's fashionable harbour area, Kvæsthusmolen, Hofor Fjernkøling A/S has established a new 900 mm intake pipeline for seawater.

In cooperation with the contractor, MJ Eriksson A/S, Uponor Infra has installed a 3000 mm manhole, with 900 mm valves controlling cooling water under the spectacular staircase called Kissing Stairs.

Using water from Copenhagen Harbor for cooling, Uponor Infra has contributed to exploit natural resources sustainably. We have supplied 360° Project Services and has contributed to achieve a number of advantages for Copenhagen Harbour:

- Sustainable infrastructure
- Up to 70% CO₂ reduction
- Financial savings up to 40%
- Lower operating and maintenance costs
- Lower energy and capital costs
- High security of supplies
- Less noise and less space requirements

Intake pipeline for seawater in Copenhagen Harbour





Uponor d.o.o.

Uponor d.o.o.
Radnička cesta 37b
10000 Zagreb
Hrvatska

Telefon +385(0)16197158
W www.uponor.com