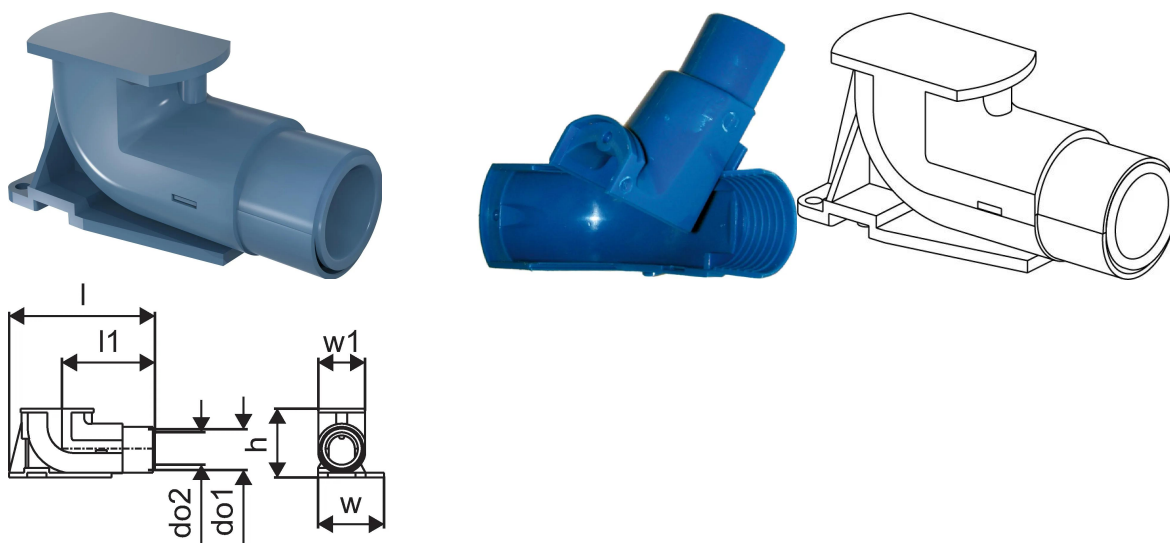


Uponor Smart Aqua Box terminale blu Q&E UP 25/20, 28/23

1008845



Informazioni Uponor Smart Aqua Box terminale blu Q&E UP

Specifiche

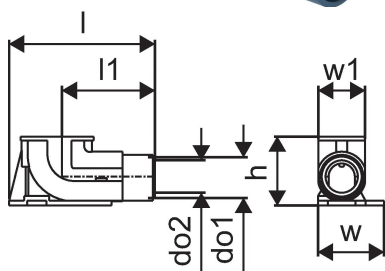
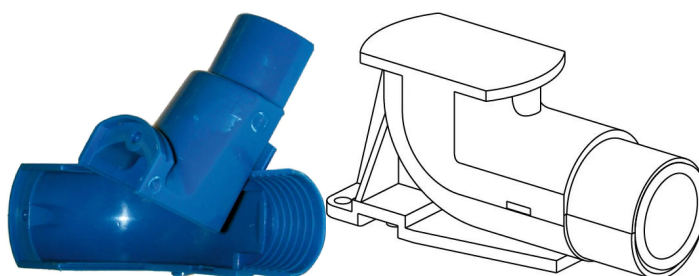
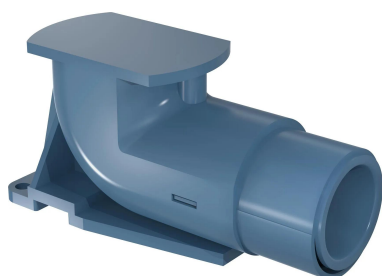
- Gomiti per connessione rubinetto e miscelatore
- Anelli Q & E devono essere ordinati separatamente se non diversamente indicato

Application

- Per applicazione idrosanitaria per acqua destinata al consumo umano
- Se non diversamente indicato: filetto maschio e femmina accordo con EN 10226-1

Uponor Smart Aqua Box terminale blu Q&E UP 25/20, 28/23

1008845



Documenti tecnici

Download documenti 

Uponor Italia

Via Torri Bianche 3 3
20871, Vimercate
Italia

T +39 039 635821
Italy.info@uponor.com
F +39 039 6084269

www.uponor.com/it-it