



Referenze

Intake pipeline for seawater in Copenhagen Harbour



Coinvolgimento Uponor



3000 mm well with DN900 valves

Intake pipeline for seawater in Copenhagen Harbour

Butt welding by night of 900 mm pipes ensures stable operation of a district cooling solution in Copenhagen Harbour.

Uponor 360° Project Services

Dati del progetto:

Location

Copenhagen, Denmark

Anno di completamento

2016

Tipologia di edificio

Comune

Product systems

Riscaldamento e raffrescamento

Tipologia progetto

Nuovo edificio

Partners

Costumer: HOFOR FJERNKØLING A/S

Contracter: MJ Eriksson A/S

Pipe supplier and installer: Uponor

Infra Denmark

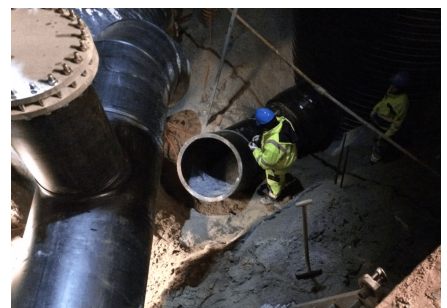
In connection with the construction of a major seawater facility in Copenhagen's fashionable harbour area, Kvæsthusmolen, Hofof Fjernkøling A/S has established a new 900 mm intake pipeline for seawater.

In cooperation with the contractor, MJ Eriksson A/S, Uponor Infra has installed a 3000 mm manhole, with 900 mm valves controlling cooling water under the spectacular staircase called Kissing Stairs.

Using water from Copenhagen Harbor for cooling, Uponor Infra has contributed to exploit natural resources sustainably. We have supplied 360° Project Services and has contributed to achieve a number of advantages for Copenhagen Harbour:

- Sustainable infrastructure
- Up to 70% CO₂ reduction
- Financial savings up to 40%
- Lower operating and maintenance costs
- Lower energy and capital costs
- High security of supplies
- Less noise and less space requirements

Intake pipeline for seawater in Copenhagen Harbour





Indirizzo

Uponor S.r.l.
Via Eugenio Villoresi 2-4
20864 Agrate Brianza – MB
ITALIA

Telefono +39 039 63 58 200

E-Mail
servizioclienti.it.bfs@georgfischer.com
W www.uponor.com