

Concrete core activation České Budějovice Research Library



Betrokkenheid van Uponor

- ✓ Contec ON system 700 m2 incl. underlay for concrete finish, 14x2.0 mm piping and Contec ON module. Main distribution pipelines PE-Xa 40 mm.

Concrete core activation České Budějovice Research Library

Heating and cooling using the Contec ON in The Research Library.

Heating and cooling of the new research library with the Contec ON concrete core activation system

Projectgegevens:

Location

České Budějovice, Czech Republic

Afronding

2020

Type gebouw

Kantoorgebouw

Product systems

Apkure & Dzesěšana

Soort project

Nieuwbouw

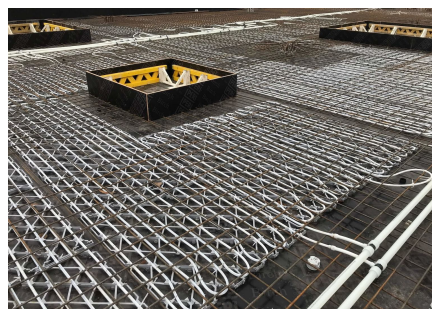
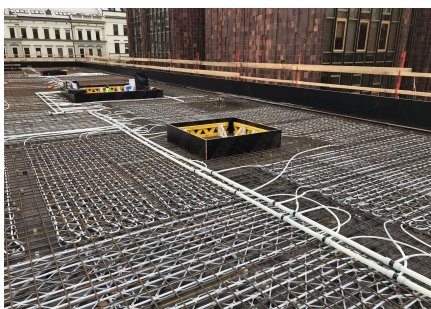
Partners

- ČIS ČB

Books require year-round indoor temperature

This building with a total ground area of 1,000 m² is equipped with the Contec ON concrete core activation system for year round temperature control of the interior climate within the required limits (between 20 and 26 °C summer/winter). Due to the options on offer, the entire system is fed from one place through ten outlets using PE-Xa 40 mm piping, to which separate modules for activation of the Contec ON system are connected by Tichelmann distributor. It is a one-storey building with a completely glazed façade without any shade whatsoever. With regard to these circumstances, a study was conducted using a 3D model with dynamic simulation of changing temperatures and burdens. The Contec ON system is capable of covering all temperature requirements all year round.

Concrete core activation České Budějovice Research Library





+GF+

Contact

Uponor GmbH
Industriestraße 56
97437 Hassfurt

Contact Uponor GmbH
Industriestraße 56
97437 Hassfurt
Telefoon +499521690-0
Email gfbfs-info.nl@georgfischer.com
W www.uponor.com