

Referenties

Grand Poet Hotel by Samarah



Betrokkenheid van Uponor



Grand Poet Hotel by Samarah, Riga

Historical building in heart of Riga. Universal Uponor MLC materials were used in the hotel water supply and radiator heating system.

It is the first artist built hotel in Riga comprising a modern art and bohemian lifestyle. The hotel building has the ancient and colourful history, preservation of which has required a special care during the renovation process.

Projectgegevens:

Location	Afronding	
Riga, Latvia	2018	
Type gebouw	Product systems	
Horeca	Apkure & Dzesēšana	
Adres	Website	Soort project
Raina bulvaris 5/6, Riga, Latvia, LV1050	https://grandpoet.semarahhotels.com/?lang=en	Renovation

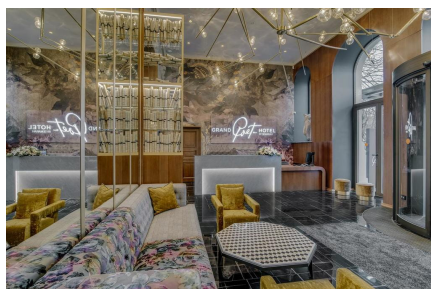
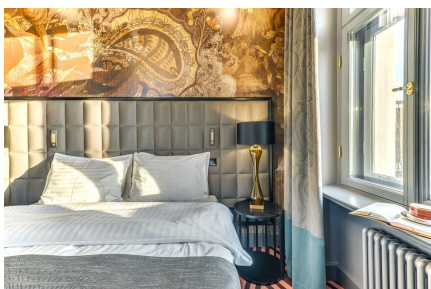
Partners

Architect: Sarma & Norde
Interior: Stylt Trampoli

Short description

A new hotel with 168 stylish rooms and extra luxurious apartments. Here everything is in one place – a restaurant for a new and sophisticated gastronomic experience, modern event and conference rooms, spacious Wellness center, as well as three elegant SPA rooms that are going to be open in early spring. The hotel is a pearl for design idolaters, free-livers and cultural experiences. Universal Uponor MLC materials were used in the hotel water supply and radiator heating systems.

Grand Poet Hotel by Samarah, Riga





Contact

Uponor GmbH
Industriestraße 56
97437 Hassfurt

Contact Uponor GmbH
Industriestraße 56
97437 Hassfurt
Telefoon +499521690-0
Email gfbfs-info.nl@georgfischer.com
W www.uponor.com