

Grand Poet Hotel by Samarah



Zaangażowanie Uponor



Grand Poet Hotel by Samarah, Riga

Historical building in heart of Riga. Universal Uponor MLC materials were used in the hotel water supply and radiator heating system.

It is the first artist built hotel in Riga comprising a modern art and bohemian lifestyle. The hotel building has the ancient and colourful history, preservation of which has required a special care during the renovation process.

Fakty o projekcie:

Location

Riga, Latvia

Zakończenie projektu

2018

Rodzaj budynku

Budynek hotelowy

Product systems

System ogrzewania/chłodzenia
płaszczynowego Uponor

Adres

Raina bulvaris 5/6, Riga, Latvia,
LV1050

Strona internetowa

<https://grandpoet.semarahhotels.com/?lang=en>

Rodzaj projektu

Renovation

Partnerzy

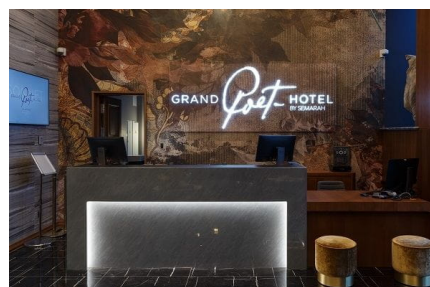
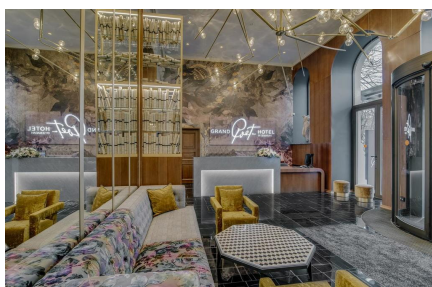
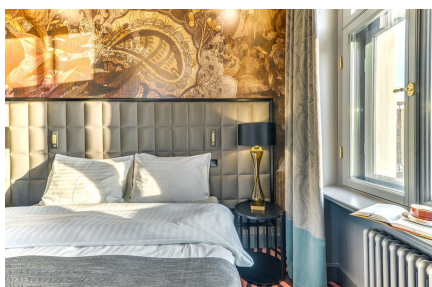
Architect: Sarma & Norde

Interior: Stylt Trampoli

Short description

A new hotel with 168 stylish rooms and extra luxurious apartments. Here everything is in one place – a restaurant for a new and sophisticated gastronomic experience, modern event and conference rooms, spacious Wellness center, as well as three elegant SPA rooms that are going to be open in early spring. The hotel is a pearl for design idolaters, free-livers and cultural experiences. Universal Uponor MLC materials were used in the hotel water supply and radiator heating systems.

Grand Poet Hotel by Samarah, Riga





+GF+

Adres

Uponor Infra Sp. z o.o.
01-217 Warszawa
ul. Kolejowa 5/7

W www.uponor.com

Uponor Sp. z o.o.
01-217 Warszawa
ul. Kolejowa 5/7