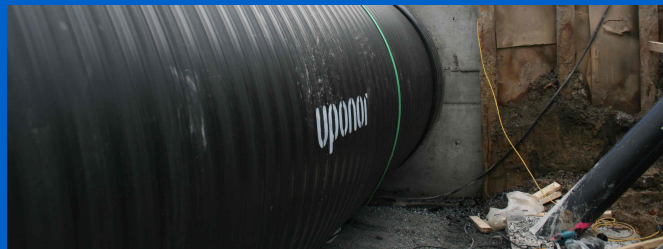


## Uponor Infra culverts in major investment at Skåne University Hospital in Malmö



### Zaangażowanie Uponor



Weholite dimension 2200 mm

## Uponor Infra culverts in major investment at Skåne University Hospital in Malmö

Infra culvert in Skånes University Hospital in Malmoe

The new hospital area in Malmö describes as one of Region Skåne's largest investments ever. The sustainable culvert solution that Uponor Infra has created for the hospital is part of this major investment.

### Fakty o projekcie:

Location

Malmoe, Sweden

Zakończenie projektu

2020

Rodzaj budynku

Infrastruktura miejska

Product systems

Konstrukcje na zamówienie

Rodzaj projektu

Nowy budynek

## 10 meter of test culvert installed

Even though the infra culvert that Uponor Infra has prepared for Skåne University Hospital in Malmö is almost 10 meters long, the benefits are many for the construction project. The hospital area that the Region of Skåne, together with PEAB and Forsen, is building includes a service building, a care building and a mortuary. At the beginning of 2022, the new mortuary will be ready and provide space for approximately 220 mortuaries, sweeping rooms for funeral contractors and religion-neutral display rooms for relatives. The culvert system from Uponor Infra is part of the underground infrastructure for, among other things, district heating, district cooling, sprinklers, electricity and telecommunications between the mortuary, the service

building and the care building.

Connection culvert as a good role model

- We saw the opportunity to connect the hospital buildings with the culvert. I definitely believe that this will be a good example and role model for future construction projects with similar challenges, says Jimmy Ohlsson, responsible sales representative at Project Services at Uponor Infra.

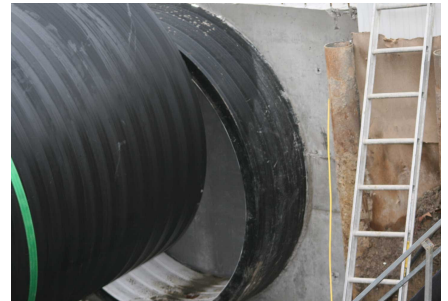
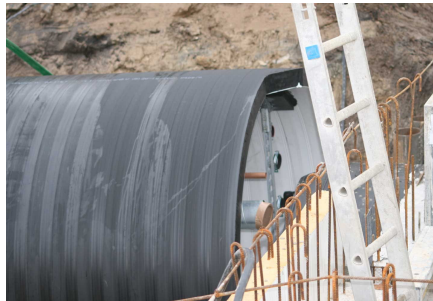
After having the first meetings about the project as early as 2019, the infra culvert was installed on site by PEAB at the end of 2020. It became clear that the culvert solution was a fast and cost-effective construction. Welding and placement took place in one day; the backfilling then took three to four days. Even from a sustainability perspective, the culvert proved to be an affordable solution. All material used for the culvert is 100 percent recyclable and the construction itself causes significantly less CO<sub>2</sub> emissions, instead of a construction where, for example, concrete needs to be cast.

Another advantage in the hospital environment is that the culvert, after a quick installation, will in the end ensure a disturbance-free environment. When cables need to be replaced or repaired, this can be done in the culvert itself, without the need for excavation or construction efforts. In this way, a culvert solution also reduces work risks during construction, installation and repair. The protection that the culvert gives the wires extends their service life considerably.

- It may have taken some time until the construction market has seen the potential, but today more and more players are looking at culverts as a sustainable solution. We are in meetings with the city of Malmö about a culvert solution to find a good solution for a new development area, Jimmy Ohlsson concludes.

## Uponor Infra culverts in major investment at Skåne University Hospital in Malmö





It may have taken some time until the construction market has seen the potential, but today more and more players are looking at culverts as a sustainable solution.

**+GF+**

Adres

Uponor Infra Sp. z o.o.  
01-217 Warszawa  
ul. Kolejowa 5/7

W [www.uponor.com](http://www.uponor.com)

Uponor Sp. z o.o.  
01-217 Warszawa  
ul. Kolejowa 5/7