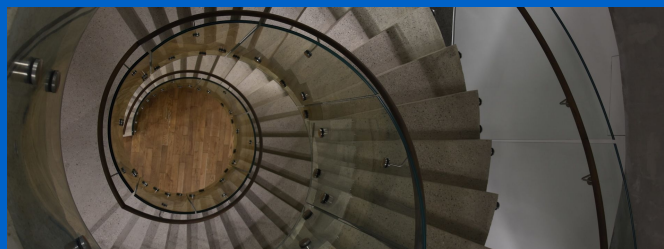


Referências

Concrete core activation ČSOB Prague



Envolvimento da Uponor

- ✓ The project was executed using three basic components: PE-Xa 14x2.0 mm and PE-Xa 20x2.0 mm piping of a total length of approximately 350 km. The third components employed were Vario M distribution units.

Concrete core activation ČSOB Prague

Heating and cooling using in the office building.

Dados do projeto:

Location

Prague, Czech Republic

Conclusão

2019

Tipo de edifício

Edifício de escritórios

Product systems

Climatização Invisível

Tipo de projeto

Novo edifício

Parceiros

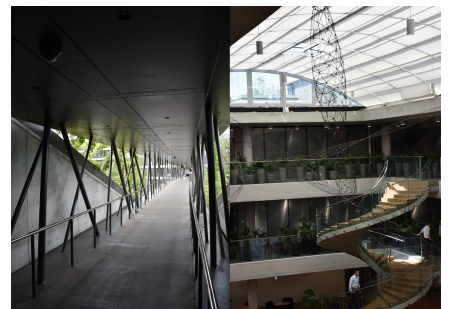
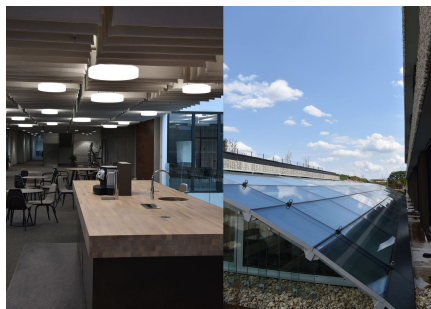
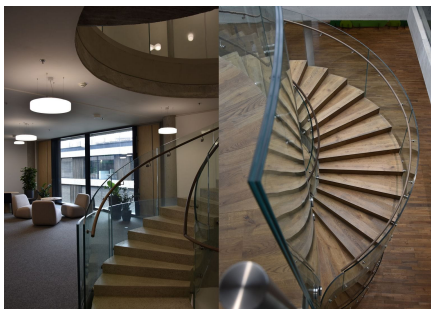
- Instalace Praha
- ČSOB

The entire complex was planned using BIM technology

The new ČSOB bank headquarters for uses concrete core activation for heating and cooling. The entire building is equipped

with a combination of the Contec and Contec ON systems. The Contec ON system is installed adjacent to the façade, while the Contec system is installed in the core of the building. The new headquarters building meets even the highest ecological standards in accordance with LEED Platinum international certification. The heating source are heat pumps with a total of 173 150 m-deep boreholes. The building complex comprises several “freestanding” buildings connected by a central atrium. The entire complex was planned and continues to be operated using BIM technology.

Concrete core activation ČSOB Prague





Uponor em Portugal

Uponor Portugal, Lda.

Rua Jardim 170 R/C Esquerdo -fração
B

4405 - 823 Vilar Paraíso - Vila Nova de
Gaia

Telefone +351 227 860 200

E-mail

servicioalcliente.es.bfs@georgfischer.com

W www.uponor.com