



Referências

Intake pipeline for seawater in Copenhagen Harbour



Envolvimento da Uponor



3000 mm well with DN900 valves

Intake pipeline for seawater in Copenhagen Harbour

Butt welding by night of 900 mm pipes ensures stable operation of a district cooling solution in Copenhagen Harbour.

Uponor 360° Project Services

Dados do projeto:

Location

Copenhagen, Denmark

Conclusão

2016

Tipo de edifício

Edifício público

Product systems

Heating and cooling

Tipo de projeto

Novo edifício

Parceiros

Costumer: HOFOR FJERNKØLING A/S

Contracter: MJ Eriksson A/S

Pipe supplier and installer: Uponor

Infra Denmark

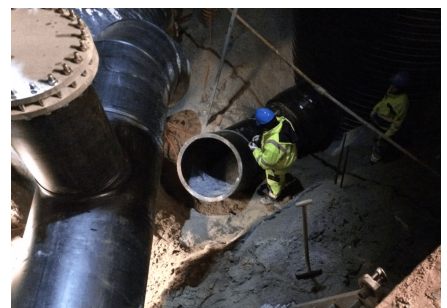
In connection with the construction of a major seawater facility in Copenhagen's fashionable harbour area, Kvæsthusmolen, Hofof Fjernkøling A/S has established a new 900 mm intake pipeline for seawater.

In cooperation with the contractor, MJ Eriksson A/S, Uponor Infra has installed a 3000 mm manhole, with 900 mm valves controlling cooling water under the spectacular staircase called Kissing Stairs.

Using water from Copenhagen Harbor for cooling, Uponor Infra has contributed to exploit natural resources sustainably. We have supplied 360° Project Services and has contributed to achieve a number of advantages for Copenhagen Harbour:

- Sustainable infrastructure
- Up to 70% CO₂ reduction
- Financial savings up to 40%
- Lower operating and maintenance costs
- Lower energy and capital costs
- High security of supplies
- Less noise and less space requirements

Intake pipeline for seawater in Copenhagen Harbour





Uponor em Portugal

Uponor Portugal, Lda.
Rua Jardim 170 R/C Esquerdo -fração
B
4405 - 823 Vilar Paraíso - Vila Nova de
Gaia

Telefone +351 227 860 200
E-mail
servicioalcliente.es.bfs@georgfischer.com
W www.uponor.com