

Referințe

Château Gbelány



Implicarea Uponor

- ✓ Pipes were used for distribution of health equipment Uponor MLC from dimension 20 to dimension 90. With the Riser system, including fittings RS2 and RS3, for hot, cold, circulation and utility water in a total length of 2,800 m.

Reconstruction of the Gbelána mansion

Internal distributions of health technology - footboards and horizontal distributions from dimension 20 to 90.

A private investor renovated the Gbelány mansion into a 4-star congress hotel with wellness. In the renovated Château Gbelány hotel, the distribution of hot, cold, circulating and utility water was changed. Internal distributions of health technology - footboards and horizontal distributions from dimension 20 to 90.

Date despre proiect

Location

Gbelany, Slovakia

Completare

2015

Tip de clădiri

Hotel buildings

Product systems

Sisteme de țevi multistrat

Adresa

Hlavná 140, 013 02 Gbelány

Website

<https://www.chateaugbelany.com/>

Tipul proiectului

Renovation

Parteneri

BWF sro

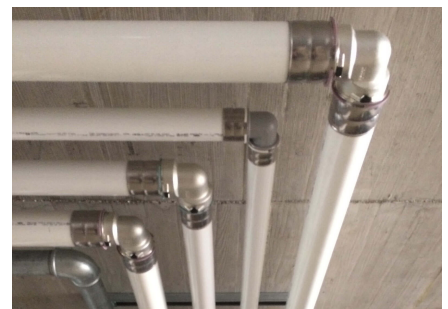
Tolstoy 1209/4

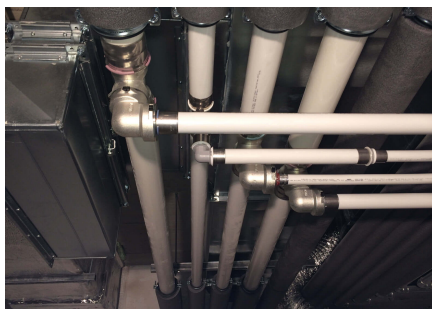
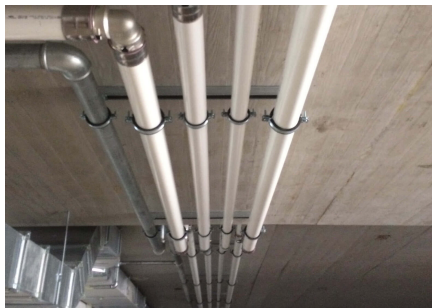
010 01 Žilina 1

Reconstruction of the Gbel'ana mansion into a 4-star congress hotel with wellness

During the renovation of the mansion, particular emphasis was placed on sanitary pipes that meet the requirements and guidelines for drinking water. And that's why we used our unique composite pipe system to install drinking water distribution. Uponor MLC Uni Pipe Plus, which boasts a seamless aluminum layer. This means that this composite pipe does not have a longitudinal weld and has a different composition and properties than for example Uponor PE-Xa. We deliver composite pipes in rods or coils. The advantage of this system is 100% resistance to oxygen diffusion, easy handling, low weight and, above all, high shape stability and flexibility in bending.

Château Gbelány





+GF+

Address

Uponor Romania
Splaiul Unirii 76, parter, Sector 4,
București

Phone +40 31 805 33 91
E-Mail serviciuclienti@uponor.com
W www.uponor.com