

Reference

## Aurora Micro Apartments



### Vključenost Uponorja



#### Project highlights

- 22,000 square feet
- Installer: Wolfe Plumbing



#### Products used

- Uponor AquaPEX for plumbing
- ProPEX Fittings
- 10,025 ft. of Uponor PEX pipe

---

## Contractors choose Uponor based on ease of installation

Learn why contractors chose to install an Uponor AquaPEX® plumbing system for these apartments based on product reliability and ease of installation...

The Aurora Micro Apartments in Shoreline, Wash. is a six-story, 80-unit micro-apartment complex near Seattle. The units, also known as aPodments, have common spaces for a community atmosphere targeted toward students, recent graduates, young professionals and seniors. The purpose of these tiny homes is to give individuals more affordable housing, which allows them to spend money on experiences, not spaces.

---

## Dejstva o projektu:

Location

Shoreline, WA, USA

Zaključek

2016

Vrsta objekta

Večstanovanjski objekt

Vrsta projekta

Novogradnja

---

## Learn why contractors chose to install an Uponor AquaPEX® plumbing system for West Coast apartments

When it came to choosing a plumbing system, the project team chose an Uponor AquaPEX plumbing system because of the reliability and ease of installation of Uponor PEX. For a few of the installers it was their first time working with Uponor PEX, so they experienced a short-lived learning curve.

“Once you’ve tried making a fitting two times, you’ve got it. It just becomes common sense,” said Roman Hudson, foreman at Wolfe Plumbing. “The new Milwaukee M18™ FORCELOGIC™ ProPEX® expansion tool operates the same as the smaller tool — just pull the trigger and let it go.”

Because of the flexibility of Uponor PEX pipe and the painless connections of ProPEX fittings, the team was able to speed up the installation time.

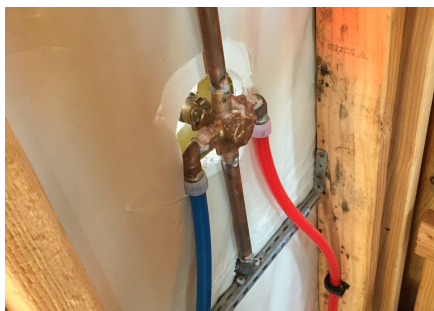
“PEX is more forgiving and it’s lighter than copper,” said Hudson. “We used to use CPVC, stainless and copper pipes, but ProPEX fittings, man, it’s quick and fast. Once you started figuring it out, PEX is faster.”

The team used Uponor Design Services to ensure a seamless plumbing design. Uponor’s design engineers and the project engineers worked in tandem to design an efficient system.

“The cool thing about Uponor Design Services is, because it’s their product, they’ll push the engineering to the max,” said Bert Shepardson, project manager at Wolfe Plumbing. “That’s what allows us to use smaller pipe sizes and have more favorable installs.”

### Aurora Micro Apartments





PEX is more forgiving and it's lighter than copper. We used to use CPVC, stainless and copper pipes, but ProPEX fittings, man, it's quick and fast.

**uponor**

Adresa

DOM-TITAN d.d.  
Kovinarska cesta 28

Telefon 00386 1 8309 168  
E-Mail [pc5@dom-titan.si](mailto:pc5@dom-titan.si)  
W [www.uponor.com](http://www.uponor.com)