



Referenser

Loring Park Tower



Uponors roll



Project Highlights

- Developer: Magellan Developer Group, LLC
- General Contractors: James McHugh Construction Company and Adolphson and Peterson Construction
- Plumbing Contractor: Metropolitan Mechanical Contractors



Products used

- 53,000 ft. of ½" to 2" Uponor AquaPEX Pipe
- Uponor Engineered Polymer (EP) Multiport Tees

Skeptics floored by labor savings with Uponor PEX

See how this Minneapolis Mechanical Contractor witnessed significant decrease in jobsite labor during Uponor PEX...

The \$100M Loring Park Tower in Minneapolis is the first apartment tower built in downtown Minneapolis in more than three decades. The 36-story, 366-unit apartment tower opened in the fall of 2014 and includes many amenities, such as a fitness center, business center, pool, movie theatre and lounge.

Projektfakta

Location
Minneapolis, MN, USA

Färdigställt
2014

Byggnadstyp
Flervåningshus

Projekttyp
Nybyggnation

Veteran contractor saves significant time installing 53,000 ft. of riser, main and in-unit piping for 36-story high rise

Plumbing Foreman, Chico Flores of Metropolitan Mechanical Contractors (MMC), has been installing plumbing systems for more than 20 years and, while he was initially skeptical of the PEX system, he is a firm believer in the product now.

“At first I didn’t like it,” he says. “I thought it was taking the skill out of the trades. But now I love it because of all the time it saves on installation and testing.”

Flores estimates he saves about half the time installing and testing a PEX system compared to a copper or CPVC system. And when you’re installing 53,000 feet of pipe on a project of this size, that’s a lot of time savings.

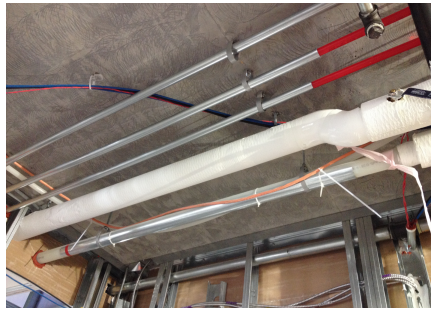
“Because you can’t dry fit the ProPEX® expansion fittings, there’s no concern about blow offs,” he says. “That makes the system testing go really quick.”

Flores also likes the installation efficiencies provided by the Uponor Engineered Polymer (EP) Multiport Tees. “The multiports are great,” he says. “You just put in your tee and send the whips wherever you need them.”

The Loring Park Tower project is using 1½" to 2" Uponor AquaPEX® pipe for the risers and mains with ½" to 1" Uponor AquaPEX for the in-suite lines.

Loring Park Tower





I thought it was taking the skill out of the trades. But now I love it because of all the time it saves on installation and testing.

+GF+

Adress

Uponor VVS
737 03 Virsbo

W www.uponor.com

Uponor Infra AB
Industrivägen 11
513 32 Fristad