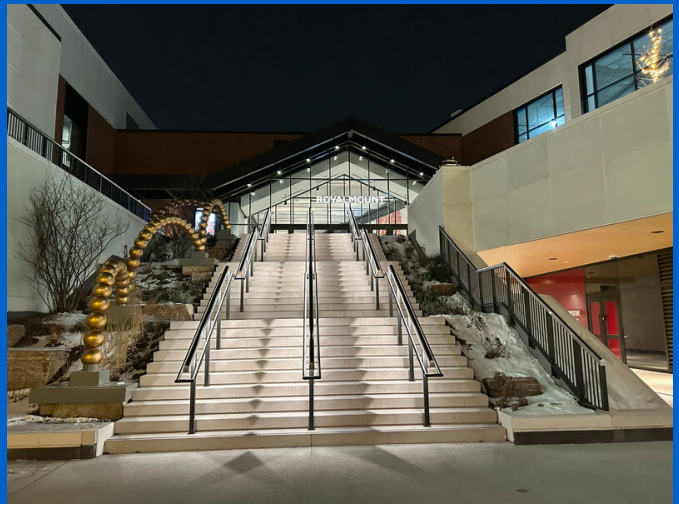




Referenser

## Royalmount



### Uponors roll

#### ✓ Installed products

- 253 loops of ¾" Uponor helioPEX™
- 37 Uponor Commercial Stainless-steel Manifolds
- 74 10-foot lengths of 1½" Wirsbo hePEX™
- ProPEX fittings
- Pipe sleeves for crossing concrete joints

#### ✓ Services included

- Uponor Technical Sales
- Uponor Construction Services
- Uponor Engineering Services
- Uponor Design Services
- Uponor Marketing
- Uponor Customer Service
- Collaboration with Uponor Product Management and Sales

---

## Shopping Centre Requires Efficient Snow Removal System to Help Meet LEED®-Gold and Carbon-Neutral Design Requirements

As developer Carbonleo designed Royalmount in Mount Royal, Québec, they created a pedestrian-oriented space that prioritized sustainable landscape, public transit access, and active mobility. Royalmount became an eco-community that seamlessly integrates nature throughout its indoor-outdoor design, offering a unique blend of experiential attractions, retail stores, office spaces, and accommodations that are rooted in restoration and environmental consciousness. Because Québec experiences intense winters with unpredictable amounts of snow and ice, Carbonleo needed a solution to heat the outdoor

sidewalks, allowing guests to enjoy the facility safely during winter while also protecting the outdoor greenery.❧

---

## Projektfakta

### Location

Mount Royal, Canada

### Golvutrymme

824,000 square feet❧

### Färdigställt

2025

### Byggnadstyp

Köpcentrum

### Adress

5050 chemin de la Côte-de-Liesse  
Mont-Royal, QC H4P 0C9 Canada

### Hemsida

<https://www.royalmount.com/>

### Projekttyp

Nybyggnation

---

## Partners

gbi Engineering Services

STR Mechanical

Pomerleau

Deschênes & Fils

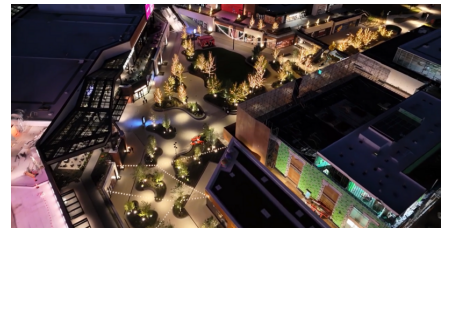
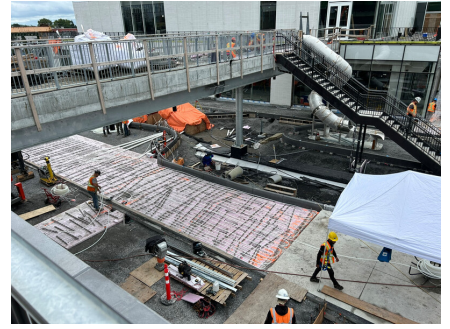
---

## Uponor Snow Melt Boosts Pedestrian Safety and Supports Carbon-Neutral Design

To align with Carbonleo's goal of year-round indoor-outdoor harmony, engineering firm gbi selected an Uponor Snow Melt System using Uponor helioPEX™ and Wirsbo hePEX™ pipe along with Uponor Commercial Stainless-steel Manifolds. The pipe is embedded in the concrete of the sidewalks and staircases and circulates a mixture of water and glycol, keeping the surfaces warm to melt snow and ice upon contact. Guests can safely enjoy the beauty of the Canadian winter without the disruption of shoveling and other snow-removal methods. Additionally, unlike harsh deicing chemicals, the Uponor Snow Melt System does not pose a threat to the project's vast array of outdoor greenery.❧

## Royalmount Gallery





"The cooperation [with Uponor] was magnificent despite all the changes as we went. Having updated plans ready, sometimes for the next day, was important to be able to keep going. And I didn't run out of materials—that's essential."

- José Carbonell, president, STR Mécanique



---

Adress

Uponor VVS  
737 03 Virsbo

W [www.uponor.com](http://www.uponor.com)

Uponor Infra AB  
Industrivägen 11  
513 32 Fristad